

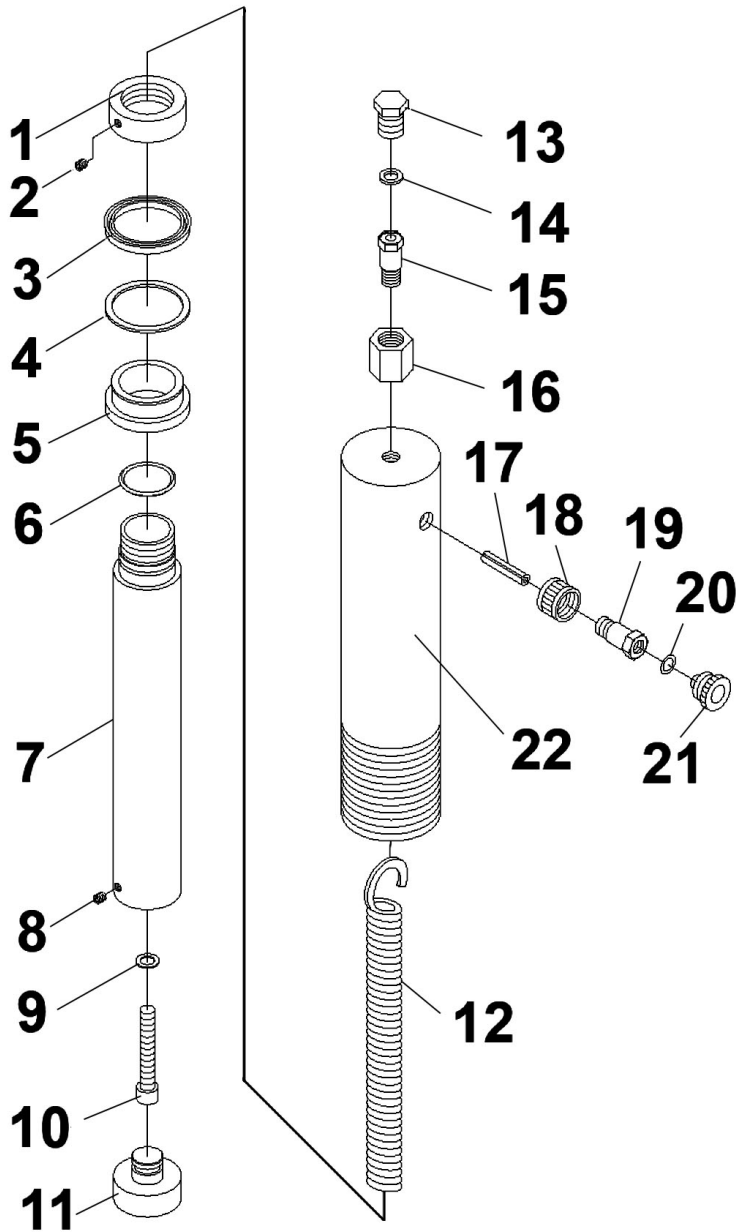
| Item | Part No. | Description |
|------|-------------|--|
| 1 | YK20F.V3-01 | PRESSURE GAUGE 'BTM FITTING'(OD 110MM) |
| 2 | YK759FAH.61 | NYLON RING |
| 3 | YK20FAH.RC | HYDRAULIC RAM COMPLETE. |
| 4 | GSM66.S | GRUB SCREW M6x6 (SINGLE) |
| 5 | YK30F.13 | SERRATED SADDLE |
| 6 | YK20FAH.06 | ROUND NUT, UPPER RING |
| 7 | YK20F.V3-07 | PLATE |
| 8 | YK20F.V3-08 | UPPER NUT |
| 9 | SS1635.S | HEX HEAD SET SCREW M16x35mm SINGLE |
| 10 | YK20F.V3-10 | UPPER BEAM |
| 11 | SN16.S | STEEL NUT M16 ZINC DIN934(SINGLE) |
| 12 | SWM16.S | SPRING WASHER M16 ZINC (SINGLE) |
| 13 | FWM16.S | FLAT WASHER M16 SINGLE |
| 14 | FWM10.S | FLAT WASHER M10 SINGLE |
| 15 | SWM10.S | SPRING WASHER M10 ZINC (SINGLE) |
| 16 | SN10.S | STEEL NUT M10 ZINC DIN934(SINGLE) |
| 17 | YK20F.V3-17 | V BLOCK (190x100x30) |
| 18 | YK20F.V3-18 | BED FRAME |
| 19 | YK20F.V3-19 | PIN, TABLE SUPPORT 250x25mm |
| 20 | YK20F.V2-20 | POST |
| 21 | YK20F.21 | BASE SECTION |

| Item | Part No. | Description |
|------|-------------|--|
| 22 | FWM12.S | FLAT WASHER M12 SINGLE |
| 23 | SWM12.S | SPRING WASHER M12 ZINC (SINGLE) |
| 24 | SN12.S | STEEL NUT M12 ZINC DIN934(SINGLE) |
| 25 | SS1230.S | HEX HEAD SET SCREW M12x30mm SINGLE |
| 26 | YK20F.V3-26 | LOWER SUPPORT |
| 27 | HHB10130.S | HEX HEAD BOLT M10x130mm SINGLE |
| 28 | YK20F.V3-28 | BUSHING |
| 29 | YK20F.29 | SCREW M8x15 |
| 30 | YK20F.30 | WASHER |
| 31 | YK20F.V3-31 | SUPPORT PLATE |
| 32 | YK20F.V3-32 | PUMP ASS'Y |
| 33 | YK20F.V3-33 | HANDLE |
| 34 | YK20F.34 | OIL FILLER NUT |
| 35 | RE97.10-03 | HOSE ASSEMBLY |
| 36 | YK20F.36 | HOSE FITTING |
| 37 | YK20FAH.R19 | COUPLER |
| 38 | YK20FAH.R15 | GAUGE COUPLER |
| 38 | YK509FAH.60 | DEEP NUT |
| 39 | YK20FAH.60 | SUPPORT |
| -- | YK20F.FK | FIXING KIT (CONTAINS NUTS, BOLTS ETC.) (NOT SHOWN) |

NOTE: It is our policy to continually improve products and as such we reserve the right to alter data, specifications and component parts without prior notice.

IMPORTANT: No liability is accepted for incorrect use of product.

WARRANTY: Guarantee is 12 months from purchase date, proof of which will be required for any claim.



| Item | Part No. | Description |
|------|-------------|--------------------------|
| 1 | YK20FAH.R01 | CIRCULAR NUT |
| 2 | GSM66.S | GRUB SCREW M6x6 (SINGLE) |
| 3 | YK20FAH.R03 | SEALING RING |
| 4 | YK20FAH.R04 | RING |
| 5 | YK20FAH.R05 | BUSHING |
| 6 | YK20FAH.R06 | O-RING |
| 7 | YK20FAH.R07 | RAM |
| 8 | YK20FAH.R08 | SCREW M6x10 |
| 9 | YK20FAH.R09 | SEALING WASHER |
| 10 | YK20FAH.R10 | BOLT M10 |
| 11 | YK20FAH.R11 | TOE |

| Item | Part No. | Description |
|------|-------------|----------------|
| 12 | YK20FAH.R12 | SPRING |
| 13 | YK20FAH.R13 | SCREW |
| 14 | YK759FAH.61 | NYLON RING |
| 15 | YK20FAH.R15 | GAUGE COUPLER |
| 16 | YK509FAH.60 | DEEP NUT |
| 17 | YK20FAH.R17 | PIN |
| 18 | YK20FAH.R18 | CONNECTION NUT |
| 19 | YK20FAH.R19 | COUPLER |
| 20 | YK20FAH.R20 | O-RING |
| 21 | YK20FAH.R21 | DUST CAP |
| 22 | YK20FAH.R22 | CYLINDER |

NOTE: It is our policy to continually improve products and as such we reserve the right to alter data, specifications and component parts without prior notice.

IMPORTANT: No liability is accepted for incorrect use of product.

WARRANTY: Guarantee is 12 months from purchase date, proof of which will be required for any claim.