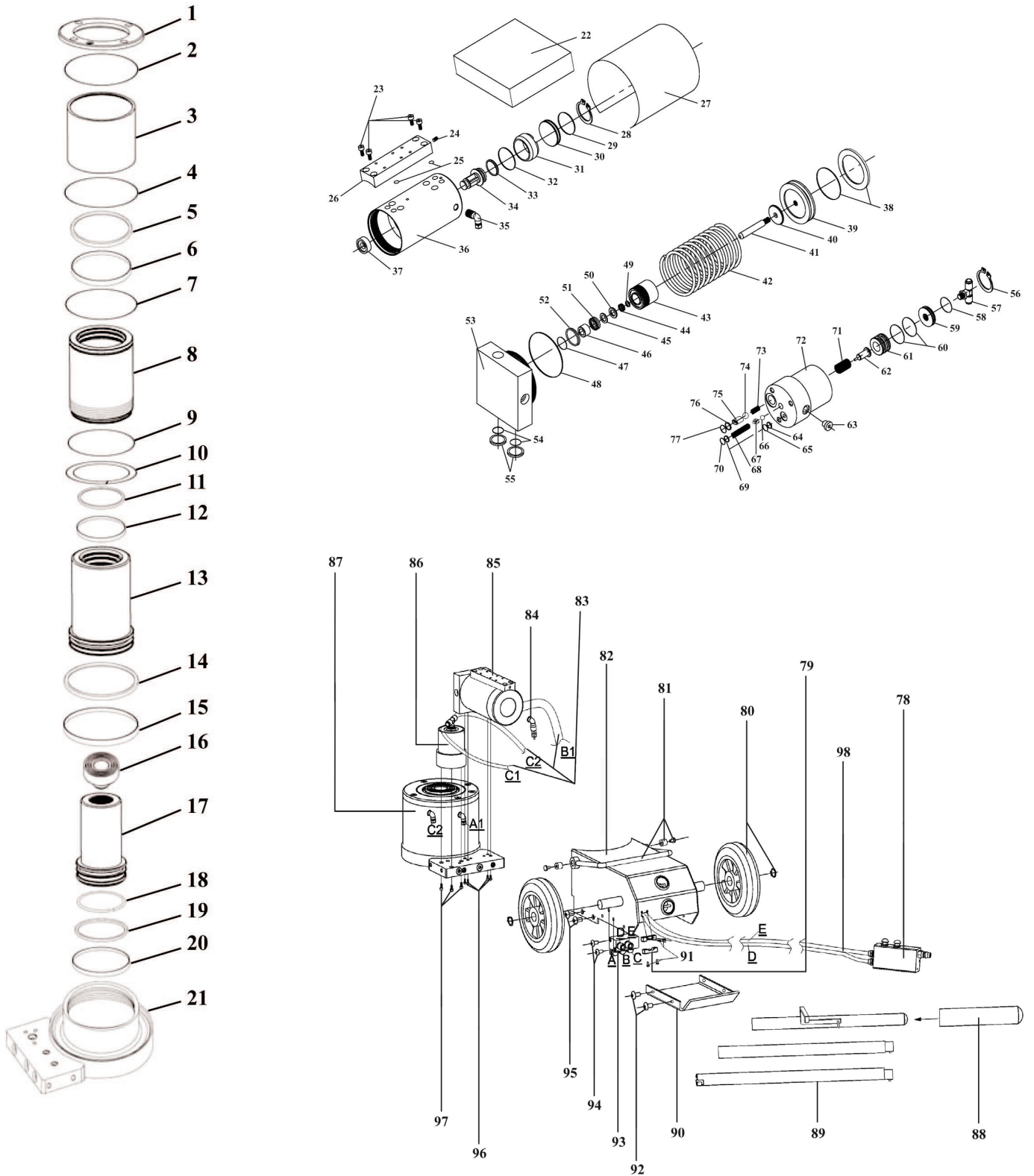


Parts Information:
**Air Operated Jack 30tonne Telescopic -
 Detachable Control Unit
 Model No: YAJ15-30DC**



NOTE: It is our policy to continually improve products and as such we reserve the right to alter data, specifications and component parts without prior notice.

IMPORTANT: No liability is accepted for incorrect use of product.

WARRANTY: Guarantee is 12 months from purchase date, proof of which will be required for any claim.

| Item | Part No. | Description |
|------|---------------|------------------|
| 1 | YAJ15-30DC.01 | COVER |
| 2 | YAJ15-30DC.02 | O-RING |
| 3 | YAJ15-30DC.03 | OIL TANK |
| 4 | YAJ15-30DC.04 | O-RING |
| 5 | YAJ15-30DC.05 | DUSTPROOF RING |
| 6 | YAJ15-30DC.06 | GUIDE RING |
| 7 | YAJ15-30DC.07 | O-RING |
| 8 | YAJ15-30DC.08 | OUTER SLEEVE |
| 9 | YAJ15-30DC.09 | O-RING |
| 10 | YAJ15-30DC.10 | LOCK RING |
| 11 | YAJ15-30DC.11 | DUSTPROOF RING |
| 12 | YAJ15-30DC.12 | GUIDE RING |
| 13 | YAJ15-30DC.13 | INNER SLEEVE |
| 14 | YAJ15-30DC.14 | SEAL RING |
| 15 | YAJ15-30DC.15 | GUIDE RING |
| 16 | YAJ15-30DC.16 | TOP COVER |
| 17 | YAJ15-30DC.17 | PISTON |
| 18 | YAJ15-30DC.18 | SPRING WASHER |
| 19 | YAJ15-30DC.19 | SEAL RING |
| 20 | YAJ15-30DC.20 | GUIDE RING |
| 21 | YAJ15-30DC.21 | BASE |
| 22 | YAJ15-30DC.22 | FOAM PAD |
| 23 | YAJ15-30DC.23 | SCREW |
| 24 | YAJ15-30DC.24 | SCREW |
| 25 | YAJ15-30DC.25 | O-RING |
| 26 | YAJ15-30DC.26 | PROTECTING COVER |
| 27 | YAJ15-30DC.27 | PROTECTING COVER |
| 28 | YAJ15-30DC.28 | RETAINING RING |
| 29 | YAJ15-30DC.29 | O-RING |
| 30 | YAJ15-30DC.30 | END COVER |
| 31 | YAJ15-30DC.31 | INNER SLEEVE |
| 32 | YAJ15-30DC.32 | O-RING |
| 33 | YAJ15-30DC.33 | U-RING |
| 34 | YAJ15-30DC.34 | PISTON |
| 35 | YAJ15-30.35 | ELBOW |
| 36 | YAJ15-30DC.36 | AIR CYLINDER |
| 37 | YAJ15-30DC.37 | RUBBER CAP |
| 38 | YAJ15-30DC.38 | OE SEAL |
| 39 | YAJ15-30DC.39 | PISTON |
| 40 | YAJ15-30DC.40 | SPACER |
| 41 | YAJ15-30DC.41 | PLUNGER ROD |
| 42 | YAJ15-30DC.42 | SPRING |
| 43 | YAJ15-30DC.43 | OIL PUMP |
| 44 | YAJ15-30DC.44 | SEAL |
| 45 | YAJ15-30DC.45 | SPACER |
| 46 | YAJ15-30DC.46 | GUIDE BUSHING |
| 47 | YAJ15-30DC.47 | O-RING |
| 48 | YAJ15-30DC.48 | O-RING |
| 49 | YAJ15-30DC.49 | LOCK RING |
| 50 | YAJ15-30DC.50 | SPACER |

| Item | Part No. | Description |
|------|---------------|------------------------------------|
| 51 | YAJ15-30DC.51 | SEAL |
| 52 | YAJ15-30DC.52 | LOCK RING |
| 53 | YAJ15-30DC.53 | PUMP BLOCK |
| 54 | YAJ15-30DC.54 | O-RING |
| 55 | YAJ15-30DC.55 | LOCK RING |
| 56 | YAJ15-30DC.56 | RETAINING RING |
| 57 | YAJ15-30.57 | T-PIECE |
| 58 | YAJ15-30DC.58 | O-RING |
| 59 | YAJ15-30DC.59 | END COVER |
| 60 | YAJ15-30DC.60 | O-RING |
| 61 | YAJ15-30.61 | OIL DRAIN PISTON |
| 62 | YAJ15-30.62 | OIL DRAIN BOLT |
| 63 | YAJ15-30DC.63 | VALVE SCREW |
| 64 | YAJ15-30DC.64 | LOCK RING |
| 65 | YAJ15-30DC.65 | O-RING |
| 66 | YAJ15-30DC.66 | STEEL BALL |
| 67 | YAJ15-30DC.67 | STEEL BALL SEAT |
| 68 | YAJ15-30DC.68 | SPRING |
| 69 | YAJ15-30DC.69 | LOCK RING |
| 70 | YAJ15-30DC.70 | O-RING |
| 71 | YAJ15-30DC.71 | SPRING |
| 72 | YAJ15-30DC.72 | DRAIN VALVE |
| 73 | YAJ15-30DC.73 | SPRING |
| 74 | YAJ15-30DC.74 | STEEL BALL |
| 75 | YAJ15-30DC.75 | BUSHING |
| 76 | YAJ15-30DC.76 | LOCK RING |
| 77 | YAJ15-30DC.77 | O-RING |
| 78 | YAJ15-30DC.78 | SWITCH SET |
| 79 | YAJ15-30DC.79 | AIR HOSE CLAMP |
| 80 | YAJ15-30DC.80 | WHEEL, FIXED(W/FIXINGS)(160x12x40) |
| 81 | YAJ15-30DC.81 | LIFTING HANDLE |
| 82 | YAJ15-30DC.82 | TANK BODY |
| 83 | YAJ15-30DC.83 | AIR HOSE (3pcs) |
| 84 | YAJ15-30.96 | ELBOW |
| 85 | YAJ15-30DC.85 | PUMP ASS'Y |
| 86 | YAJ15-30DC.86 | OIL DRAIN VALVE ASS'Y |
| 87 | YAJ15-30DC.87 | OIL CYLINDER ASS'Y |
| 88 | YAJ15-30.100 | HANDLE GRIP |
| 89 | YAJ15-30DC.89 | HANDLE (3pcs) |
| 90 | YAJ15-30DC.90 | BOTTOM COVER |
| 91 | YAJ15-30DC.91 | SCREW |
| 92 | YAJ15-30DC.92 | SCREW |
| 93 | YAJ15-30DC.93 | CIRCUIT BLOCK |
| 94 | YAJ15-30DC.94 | SCREW |
| 95 | YAJ15-30DC.95 | SCREW |
| 96 | YAJ15-30DC.96 | SCREW |
| 97 | YAJ15-30DC.97 | SCREW |
| 98 | YAJ15-30DC.98 | AIR HOSE |
| 99 | YAJ20-40DC.99 | ADAPTORS (45mm & 75mm) |