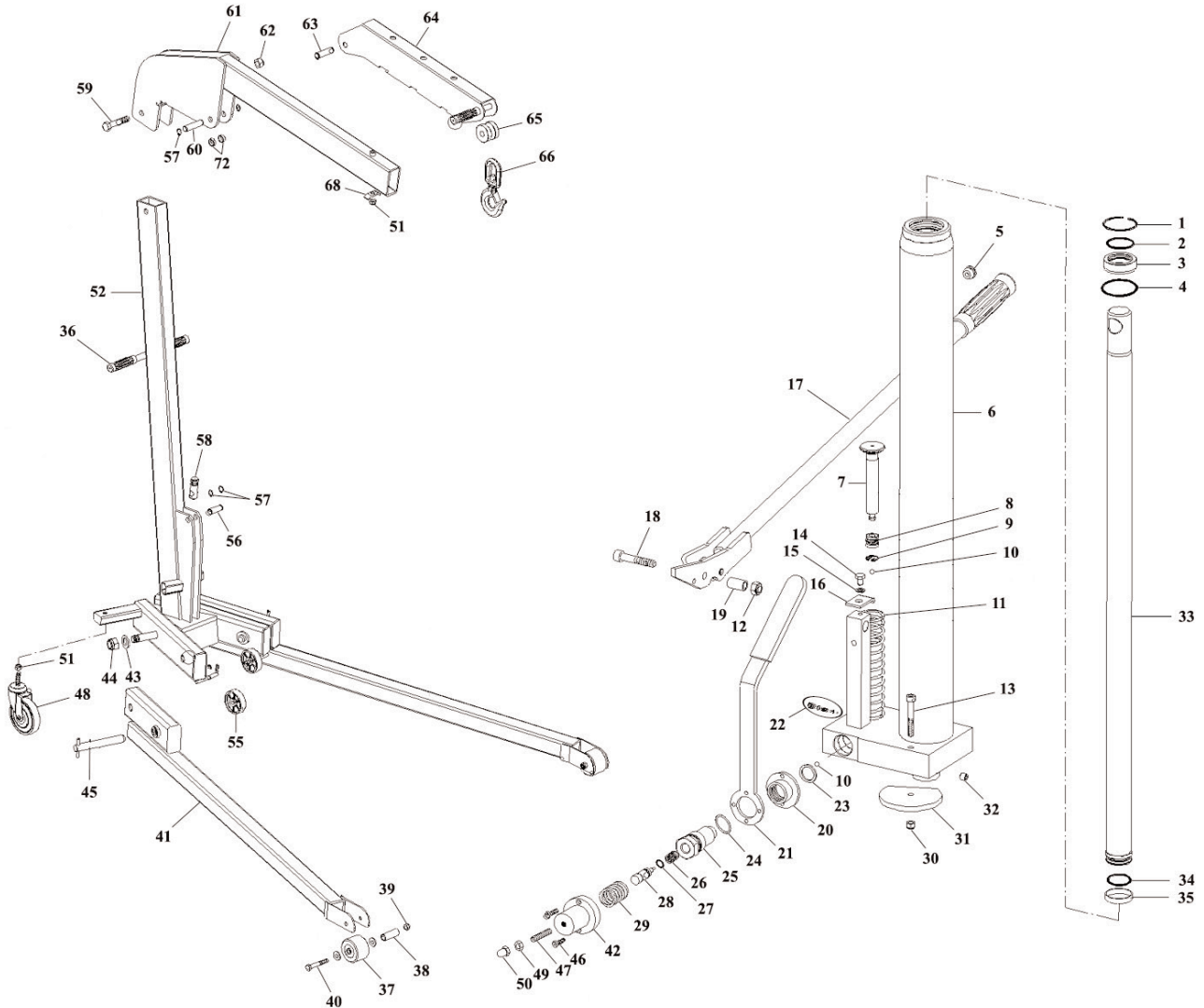




Parts Information:  
**Folding Engine Crane Premier 2tonne**  
**Model No: WF20.V3**



**NOTE:** It is our policy to continually improve products and as such we reserve the right to alter data, specifications and component parts without prior notice.

**IMPORTANT:** No liability is accepted for incorrect use of product.

**WARRANTY:** Guarantee is 12 months from purchase date, proof of which will be required for any claim.

**Sealey Group**, Kempson Way, Suffolk Business Park, Bury St Edmunds, Suffolk. IP32 7AR



01284 757500



01284 703534



sales@sealey.co.uk



www.sealey.co.uk



Parts Information:  
**Folding Engine Crane Premier 2tonne**  
**Model No: WF20.V3**

Item	Part No.	Description
1	MG-12/1361	Ring
2	WD152/02	O-Ring
3	WD152/03	Bushing
4	MGH-15/1136	O-Ring
5	ME-12001/1139	Filler Plug
6	WF20/C/06N	Hydraulic Unit
7	WD102/UNIT	Hydraulic Unit
8	TJ-2/1133	Seal
9	MGG-500/1161	Spring
10	SB-5.6	Steel Ball 5.6mm
11	AP-100/1241	Spring
12	EF-1.5/1318	Nut
13	WF20/C/13	Screw
14 - 19	WD102/UNIT	Hydraulic Unit
20	FC-5A-2297	Release Handle Support
21	FC-5A-1369	Release Handle
22	MG-2/C9	Safety Valve
23	TJ-2/1120	Copper Sealing Ring
24	MG-3/1134	O-Ring
25	WD102/25	Cylindrical Nut
26	TJ-2/1527	Spring
27	WD102/27	O-Ring
28	WD102/UNIT	Hydraulic Unit
29	FC-5A-2296	Spring
30	WD102/UNIT	Hydraulic Unit
31	WD152/31	Stop
32	WD102/UNIT	Hydraulic Unit
33	WF20/C/33	Main Piston
34	MG-10/1134	O-Ring
35	MG-10/1164	Ring
36	BM-04/1452	Grip
37	WF20/C/37	Wheel,Fixed (200x22x50)

Item	Part No.	Description
38	WF20/C/38	Bushing
39	WF20/C/39	M12 Half Nut/Lock Nut
40	WF20/C/40	Screw
41	WF20/C/41	Frame
42	FC-5A-2298	Release Support Cover
43	WF20/C/43	Washer
44	WF20/C/44	Nut
45	WF20/C/45	Locking Pin
46	CSR-55-1634	Screw
47	FC-5A-1246	Set Screw
48	WF20/C/48	Wheel,Castor (156x11x33x185)
49	FC-5A-1532	Nut
50	FC-5A-2150	Nut
51	NLN12.S	Nyloc Nut M12 Zinc Din 985 (Single)
52	WF20/C/52	Upright
55	WF20/C/55	Wheel,Fixed (56x12x21)
56	WF20/C/56	Pin
57	MI-10/1377	Retainer Ring
58	WD152/49	Axle
59	WF20/C/59	Screw
60	WF20/C/60	Pin
61	WF20/C/61	Jib
62	NLN22.S	Nyloc Nut M22 Zinc Din 985 (Single)
63	PH-15/1141	Axle
64	WF20/C/64	Jib Extension
65	WF20/C/65	Bushing
66	WF20/C/66	Hook
68	WF20/C/68	Plate
72	WF20/C/72	Bushing
--	WF20/C/73	Repair Kit (NOT SHOWN)
--	WF20/C/06N	Hydraulic Unit (NOT SHOWN)

**NOTE:** It is our policy to continually improve products and as such we reserve the right to alter data, specifications and component parts without prior notice.

**IMPORTANT:** No liability is accepted for incorrect use of product.

**WARRANTY:** Guarantee is 12 months from purchase date, proof of which will be required for any claim.

**Sealey Group**, Kempson Way, Suffolk Business Park, Bury St Edmunds, Suffolk. IP32 7AR



01284 757500



01284 703534



sales@sealey.co.uk



www.sealey.co.uk