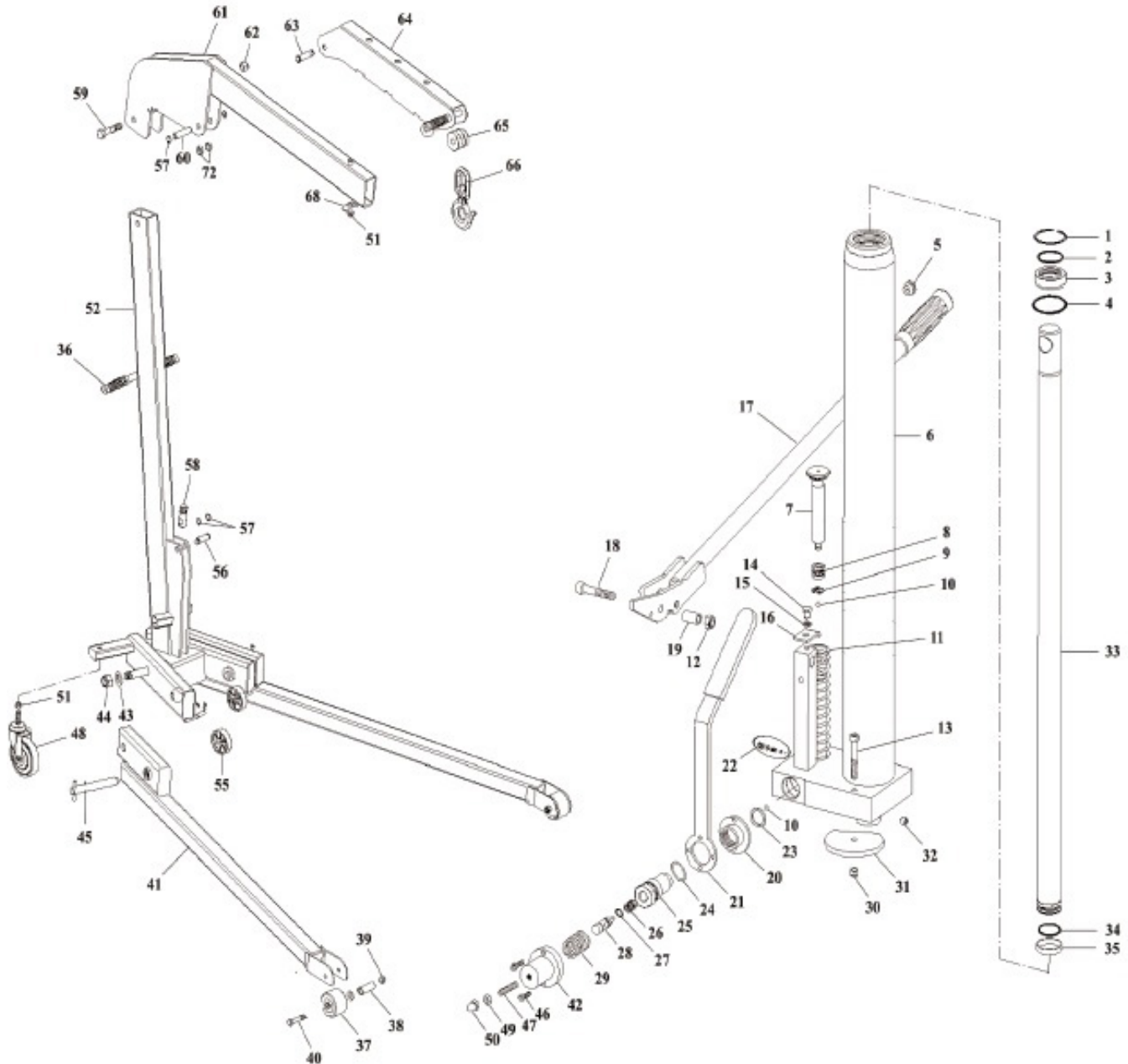




Parts Information:  
**Folding Engine Crane Premier 2tonne**  
**Model No: WF20.V2**



**NOTE:** It is our policy to continually improve products and as such we reserve the right to alter data, specifications and component parts without prior notice.

**IMPORTANT:** No liability is accepted for incorrect use of product.

**WARRANTY:** Guarantee is 12 months from purchase date, proof of which will be required for any claim.

Sealey Group, Kempson Way, Suffolk Business Park, Bury St Edmunds, Suffolk. IP32 7AR



01284 757500



01284 703534



sales@sealey.co.uk



www.sealey.co.uk



Parts Information:  
Folding Engine Crane Premier 2tonne  
Model No: WF20.V2

Item	Part No.	Description
1	MG-12/1361	RING
2	WD152/02	O-RING
3	WD152/03	BUSHING
4	MGH-15/1136	O-RING
5	ME-12001/1139	FILLER PLUG
6	WF20/C/06N	HYDRAULIC UNIT
7	WD102/UNIT	HYDRAULIC UNIT
8	TJ-2/1133	SEAL
9	PBS91C/11	SPRING
10	SB-5.6	STEEL BALL 5.6mm
11	WD102/UNIT	HYDRAULIC UNIT
12	NLN8.S	NYLOC NUT M8 ZINC DIN 985 (SINGLE)
13	WF20/C/13	SCREW
14	WD102/UNIT	HYDRAULIC UNIT
15	WD102/UNIT	HYDRAULIC UNIT
16	WD102/UNIT	HYDRAULIC UNIT
17	WD102/UNIT	HYDRAULIC UNIT
18	WD102/UNIT	HYDRAULIC UNIT
19	WD102/UNIT	HYDRAULIC UNIT
20	WF20/C/20	SCREW
21	WD102/UNIT	HYDRAULIC UNIT
22	MG-2/C9	SAFETY VALVE
23	TJ-2/1120	COPPER SEALING RING
24	MG-3/1134	O-RING
25	WD102/25	CYLINDRICAL NUT
26	TJ-2/1527	SPRING
27	WD102/27	O-RING
28	WD102/UNIT	HYDRAULIC UNIT
29	WD102/29	RETAINING RING
30	NLN6.S	NYLOC NUT M6 ZINC DIN 985 (SINGLE)
31	WD152/31	STOP
32	WD102/UNIT	HYDRAULIC UNIT
33	WF20/C/33	MAIN PISTON
34	MG-10/1134	O-RING
35	MG-10/1164	RING
36	BM-04/1452	GRIP
37	WF20/C/37	WHEEL, FIXED (200x22x50)

Item	Part No.	Description
38	WF20/C/38	BUSHING
39	WF20/C/39	M12 HALF NUT/LOCK NUT
40	WF20/C/40	SCREW
41	WF20/C/41	FRAME
42	WF20/C/42	CAP
43	WF20/C/43	WASHER
44	WF20/C/44	NUT
45	WF20/C/45	LOCKING PIN
46	WF20/C/46	PIN
47	WF20/C/47	PIN
48	WF20/C/48	WHEEL, CASTOR (156x11x33x185)
49	WF20/C/49	CAP
50	WF20/C/50	BUSHING
51	NLN12.S	NYLOC NUT M12 ZINC DIN 985 (SINGLE)
52	WF20/C/52	UPRIGHT
54	WF20/C/54	STOP
55	WF20/C/55	WHEEL, FIXED (56x12x21)
56	WF20/C/56	PIN
57	MI-10/1377	RETAINER RING
58	WF20/C/58	MOUNTING PIN
59	WF20/C/59	SCREW
60	WF20/C/60	PIN
61	WF20/C/61	JIB
62	NLN22.S	NYLOC NUT M22 ZINC DIN 985 (SINGLE)
63	PH-15/1141	AXLE
64	WF20/C/64	JIB EXTENSION
65	WF20/C/65	BUSHING
66	WF20/C/66	HOOK
67	WD152/60	HANDLE
68	WF20/C/68	PLATE
69	BM-04/1452	GRIP
70	WD152/63	BUSHING
71	WF20/C/71	SCREW
72	WF20/C/72	BUSHING
--	WF20/C/73	REPAIR KIT (NOT SHOWN)
--	WF20/C/UNIT	HYDRAULIC UNIT (NOT SHOWN)

**NOTE:** It is our policy to continually improve products and as such we reserve the right to alter data, specifications and component parts without prior notice.

**IMPORTANT:** No liability is accepted for incorrect use of product.

**WARRANTY:** Guarantee is 12 months from purchase date, proof of which will be required for any claim.

Sealey Group, Kempson Way, Suffolk Business Park, Bury St Edmunds, Suffolk. IP32 7AR



01284 757500



01284 703534



sales@sealey.co.uk



www.sealey.co.uk