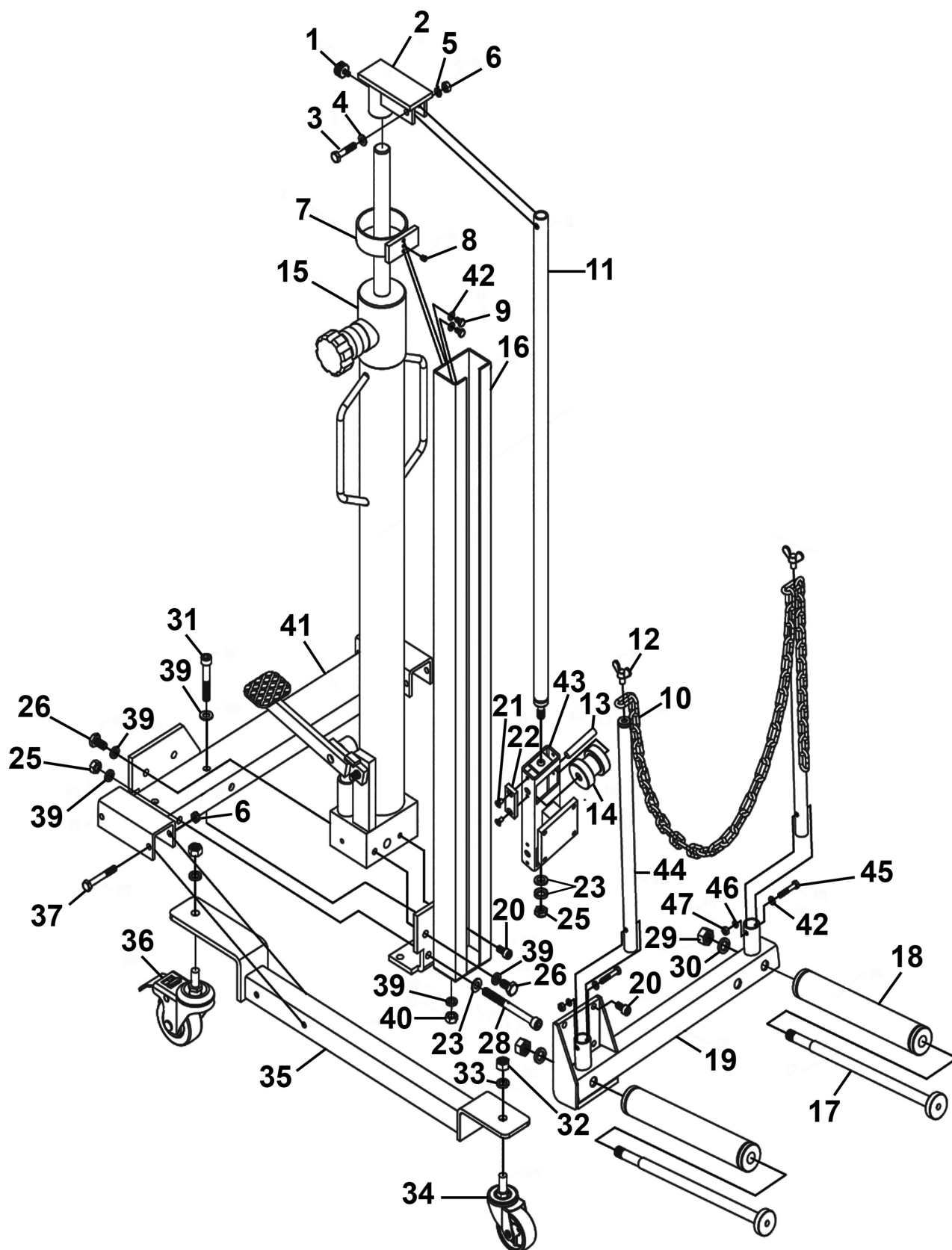


## Parts Information: Viking Quick Lift Wheel Removal/Lifter Trolley 100kg Capacity Model No: WD100S



**NOTE:** It is our policy to continually improve products and as such we reserve the right to alter data, specifications and component parts without prior notice. There may be alternative versions of this product, please contact us should you require this information.

**IMPORTANT:** No liability is accepted for incorrect use of product. Spare parts must be fitted by a competent person

**WARRANTY:** Guarantee is 12 months from purchase date, proof of which will be required for any claim.

Jack Sealey Ltd t/a Sealey Group, Kempson Way, Suffolk Business Park, Bury St Edmunds, Suffolk, IP32 7AR UK

Jack Sealey (EU) Ltd t/a Sealey Group, Farney Street, Carrickmacross, Co. Monaghan, A81 PK68 Ireland

Tel: 01284 757500 • Email: sales@sealey.co.uk • Web: www.sealey.co.uk



TM

## Parts Information: Viking Quick Lift Wheel Removal/Lifter Trolley 100kg Capacity Model No: WD100S

| Item | Part No.  | Description                                |
|------|-----------|--|
| 1    | WD100S-01 | Adjusting Thread Bolt M6 x 16mm            |
| 2    | WD100S-02 | Bridge Joint                               |
| 3    | WD100S-03 | Hex Head Bolt M8 x 40mm                    |
| 4    | FWM8.S    | Flat Washer M8                             |
| 5    | SWM8.S    | Spring Washer M8                           |
| 6    | SN8.S     | Steel Nut M8                               |
| 7    | WD100S-07 | Alignment Ring                             |
| 8    | GSM68.S   | Grub Screw M6 x 8mm                        |
| 9    | SS610.S   | Hex Head Set Screw M6 x 10mm               |
| 10   | WD100S-10 | Chain                                      |
| 11   | WD100S-11 | Pulling Rod                                |
| 12   | WD100S-12 | Wing Bolt M8 x 12mm                        |
| 13   | WD100S-13 | Guide Roller Pin                           |
| 14   | WD100S-14 | Guide Roller                               |
| 15   | WD100S-15 | Hydraulic Unit                             |
| 16   | WD100S-16 | Main Upright                               |
| 17   | WD100S-17 | Lifting Rod                                |
| 18   | WD100S-18 | Roller                                     |
| 19   | WD100S-19 | Lifting Beam                               |
| 20   | SCB816.SB | Socket Cap Bolt M8 x 16mm Black            |
| 21   | MSC510.SB | Csk Phillips Machine Screw M5 x 10mm Black |
| 22   | WD100S-22 | Nylon Plate                                |
| 23   | FWM10.S   | Flat Washer M10                            |

| Item | Part No.  | Description   |
|------|-----------|---|
| 25   | SN10.S    | Steel Nut M10   |
| 26   | SS1020.S  | Hex Head Set Screw M10 x 20mm   |
| 28   | WD100S-28 | Socket Cap Bolt M10 x 110mm   |
| 29   | SN14.S    | Steel Nut M14   |
| 30   | SWM14.S   | Spring Washer M14   |
| 31   | WD100S-31 | Socket Cap Bolt M10 x 65mm  |
| 32   | SN12.S    | Steel Nut M12   |
| 33   | SWM12.S   | Spring Washer M12   |
| 34   | WD100S-34 | Wheel, Swivel Castor, White, Single Bolt Fixing (c/w Fixings)(Ø65 x 25 x Ø7 x 112mm)          |
| 35   | WD100S-35 | Wheel Beam  |
| 36   | WD100S-36 | Wheel, Swivel Castor, White, Single Bolt Fixing (c/w Brake & Fixings) (Ø75 x32 x Ø10 x 140mm) |
| 37   | HHB860.S  | Hex Head Bolt M8 x 60mm   |
| 39   | SWM10.S   | Spring Washer M10   |
| 41   | WD100S-41 | Supporting Beam   |
| 42   | FWM6.S    | Flat Washer M6  |
| 43   | WD100S-43 | Side Block  |
| 44   | WD100S-44 | Stop Lever  |
| 45   | WD100S-45 | Hex Head Bolt M6 x 35mm   |
| 46   | SWM6.S    | Spring Washer M6  |
| 47   | SN6.S     | Steel Nut M6  |

**NOTE:** It is our policy to continually improve products and as such we reserve the right to alter data, specifications and component parts without prior notice. There may be alternative versions of this product, please contact us should you require this information.

**IMPORTANT:** No liability is accepted for incorrect use of product. Spare parts must be fitted by a competent person

**WARRANTY:** Guarantee is 12 months from purchase date, proof of which will be required for any claim.

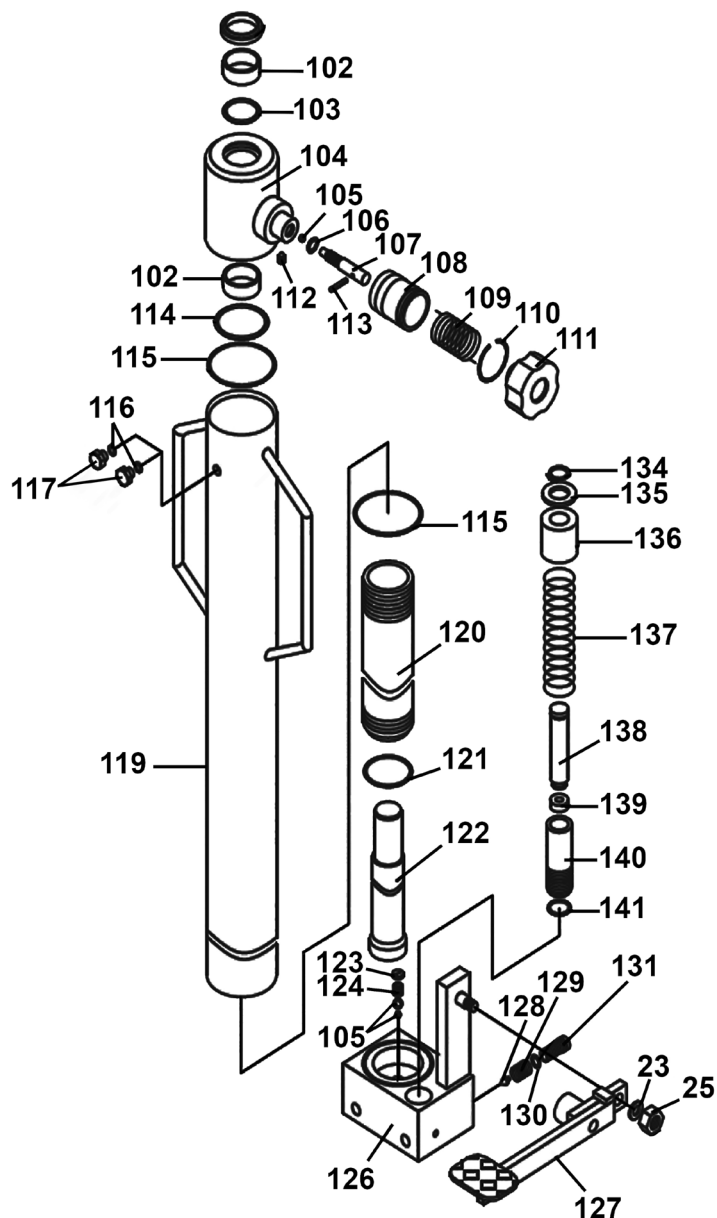
**Jack Sealey Ltd t/a Sealey Group**, Kempson Way, Suffolk Business Park, Bury St Edmunds, Suffolk, IP32 7AR UK

**Jack Sealey (EU) Ltd t/a Sealey Group**, Farney Street, Carrickmacross, Co. Monaghan, A81 PK68 Ireland

**Tel:** 01284 757500 • **Email:** sales@sealey.co.uk • **Web:** www.sealey.co.uk

## Parts Information: Viking Quick Lift Wheel Removal/Lifter Trolley 100kg Capacity Model No: WD100S

| Item | Part No.   | Description                  |
|------|------------|------------------------------|
| 23   | FWM10.S    | Flat Washer M10              |
| 25   | SN10.S     | Steel Nut M10                |
| 102  | WD100S-102 | Bush                         |
| 103  | SA51/13    | O-Ring (32.06 x 25 x 3.53mm) |
| 104  | WD100S-104 | Cylinder Head                |
| 105  | SB-9.5     | Steel Ball 9.5mm             |
| 106  | WD100S-106 | O-Ring                       |
| 107  | WD100S-107 | Release Rod                  |
| 108  | WD100S-108 | Release Bush                 |
| 109  | WD100S-109 | Release Spring               |
| 110  | WD100S-110 | Snap Ring                    |
| 111  | WD100S-111 | Release Valve Knob           |
| 112  | GSM610.S   | Grub Screw M6 x 10mm         |
| 113  | WD100S-113 | Pin                          |
| 114  | WD100S-114 | O-Ring                       |
| 115  | WD100S-115 | O-Ring                       |
| 116  | WD100S-116 | O-Ring                       |
| 117  | WD100S-117 | Oil Plug                     |
| 119  | WD100S-119 | Reservoir                    |
| 120  | WD100S-120 | Cylinder                     |
| 121  | WD100S-121 | O-Ring                       |
| 122  | WD100S-122 | Rod                          |
| 123  | WD100S-123 | Stud Screw M12 x 3mm         |
| 124  | WD100S-124 | Spring                       |
| 126  | WD100S-126 | Pump Block                   |
| 127  | WD100S-127 | Pedal                        |
| 128  | WD100S-128 | Cone Valve                   |
| 129  | WD100S-129 | Safety Spring                |
| 130  | WD100S-130 | O-Ring                       |
| 131  | WD100S-131 | Safety Screw                 |
| 134  | WD100S-134 | C-Clip                       |
| 135  | FWM16.SB   | Flat Washer M16 Black        |
| 136  | WD100S-136 | Spring Cap                   |
| 137  | WD100S-137 | Spring                       |
| 138  | WD100S-138 | Pump Piston                  |
| 139  | WD100S-139 | U-Spring                     |
| 140  | WD100S-140 | Pump Cylinder                |
| 141  | WD100S-141 | O-Ring                       |



**NOTE:** It is our policy to continually improve products and as such we reserve the right to alter data, specifications and component parts without prior notice. There may be alternative versions of this product, please contact us should you require this information.

**IMPORTANT:** No liability is accepted for incorrect use of product. Spare parts must be fitted by a competent person

**WARRANTY:** Guarantee is 12 months from purchase date, proof of which will be required for any claim.

Jack Sealey Ltd t/a Sealey Group, Kempson Way, Suffolk Business Park, Bury St Edmunds, Suffolk, IP32 7AR UK

Jack Sealey (EU) Ltd t/a Sealey Group, Farney Street, Carrickmacross, Co. Monaghan, A81 PK68 Ireland

Tel: 01284 757500 • Email: sales@sealey.co.uk • Web: www.sealey.co.uk