

Item	Part No.	Description
1	W508TV2-01	SCREW
2	W508TV2-02	FLAT WASHER
3	W508TV2-03	SUPPORT BEAM
4	W508TV2-04	ROLLING TUBE
5	W508TV2-05	AXLE
6	W508TV2-06	FLAT WASHER
7	W508TV2-07	AXLE
8	W508TV2-08	PIN
9	SN8.SW	WING NUT M8 (SINGLE)
10	W508TV2-10	HOOK
11	W508TV2-11	COLUMN
12	W508TV2-12	SCREW
13	W508TV2-13	POST
14	W508TV2-14	BOLT
15	W508TV2-15	BOLT
16	W508TV2-16	PIN
20	W508TV2-20	SPRING WASHER
21	W508TV2-21	SCREW

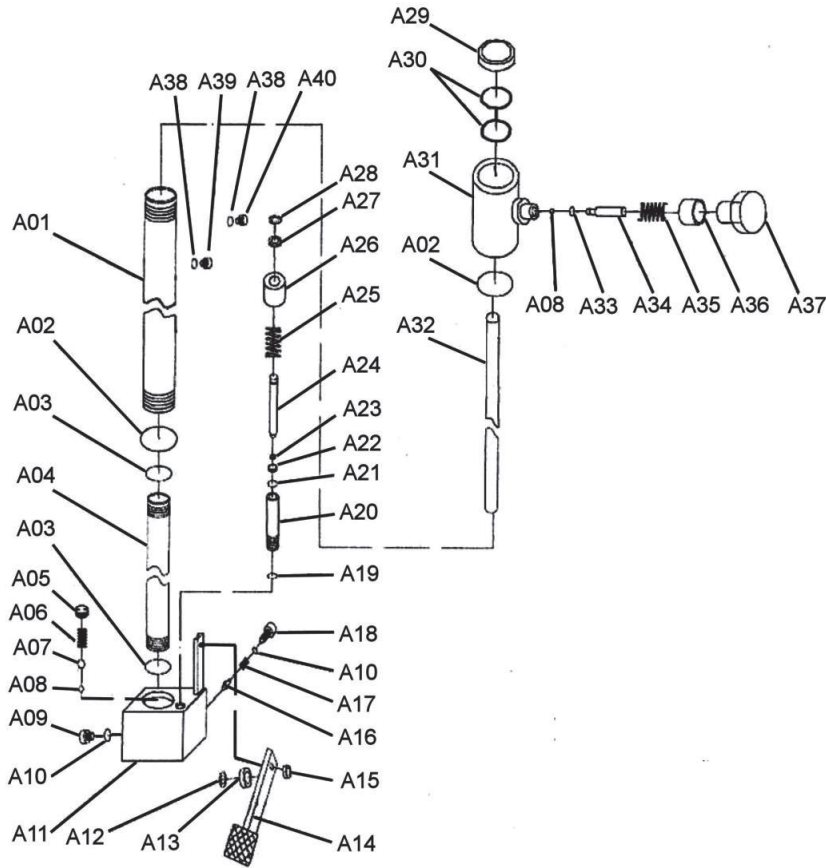
Item	Part No.	Description
22	W508TV2-22	NUT
23	W508TV3-23	SWIVEL CASTOR (c/w BRAKE)
24	W508TV2-24	SCREW
26	W508TV2-26	HYDRAULIC JACK
27	W508TV2-27	PIN
28	W508TV2-28	HANDLE
29	W508TV2-29	ROLLER TUBE
30	W508TV2-30	PIN
31	W508TV2-31	LIFTING BRACKET
32	W508TV2-32	SAFETY CHAIN
33	W508TV2-33	SCREW
34	W508TV2-34	SPRING WASHER
35	W508TV2-35	WASHER
36	W508TV2-36	SPRING WASHER
37	W508TV2-37	WASHER
38	W508TV2-38	WHEEL,FRONT CASTOR (100x12x31x127)
39	W508TV2-39	BASE BEAM

NOTE: It is our policy to continually improve products and as such we reserve the right to alter data, specifications and component parts without prior notice.

IMPORTANT: No liability is accepted for incorrect use of product.

WARRANTY: Guarantee is 12 months from purchase date, proof of which will be required for any claim.

Parts Information:
Wheel Removal Trolley 500kg
Adjustable Width
Model No: W508TV3



Item	Part No.	Description
A01	W508TV2-A01	RESERVOIR
A02	W508TV2-A02	O-RING
A03	W508TV2-A03	O-RING
A04	W508TV2-A04	CYLINDER
A05	W508TV2-A05	SCREW
A06	W508TV2-A06	SPRING
A07	W508TV2-A07	STEEL BALL
A08	W508TV2-A08	STEEL BALL
A09	W508TV2-A09	SCREW
A10	W508TV2-A10	O-RING
A11	W508TV2-A11	BASE
A12	W508TV2-A12	SNAP RING
A13	W508TV2-A13	ROLLER
A14	W508TV2-A14	FOOT PEDAL
A15	W508TV2-A15	NUT
A16	W508TV2-A16	VALVE ROD
A17	W508TV2-A17	ADJUSTMENT SPRING
A18	W508TV2-A18	SCREW
A19	W508TV2-A19	O-RING
A20	W508TV2-A20	PUMP CYLINDER

Item	Part No.	Description
A21	W508TV2-A21	O-RING
A22	W508TV2-A22	DUST SEAL
A23	W508TV2-A23	Y-SEAL
A24	W508TV2-A24	PISTON ROD
A25	W508TV2-A25	SPRING
A26	W508TV2-A26	DUST COVER
A27	W508TV2-A27	FLAT WASHER
A28	W508TV2-A28	SNAP RING
A29	W508TV2-A29	DUST SEAL
A30	W508TV2-A30	O-RING
A31	W508TV2-A31	CYLINDER HEAD
A32	W508TV2-A32	RAM
A33	W508TV2-A33	O-RING
A34	W508TV2-A34	RELEASE ROD
A35	W508TV2-A35	SPRING
A36	W508TV2-A36	COVER
A37	W508TV2-A37	KNOB
A38	W508TV2-A38	O-RING
A39	W508TV2-A39	AIR VENT VALVE
A40	W508TV2-A40	SCREW

NOTE: It is our policy to continually improve products and as such we reserve the right to alter data, specifications and component parts without prior notice.

IMPORTANT: No liability is accepted for incorrect use of product.

WARRANTY: Guarantee is 12 months from purchase date, proof of which will be required for any claim.