

Issue: 1
 Issue Date: 120115

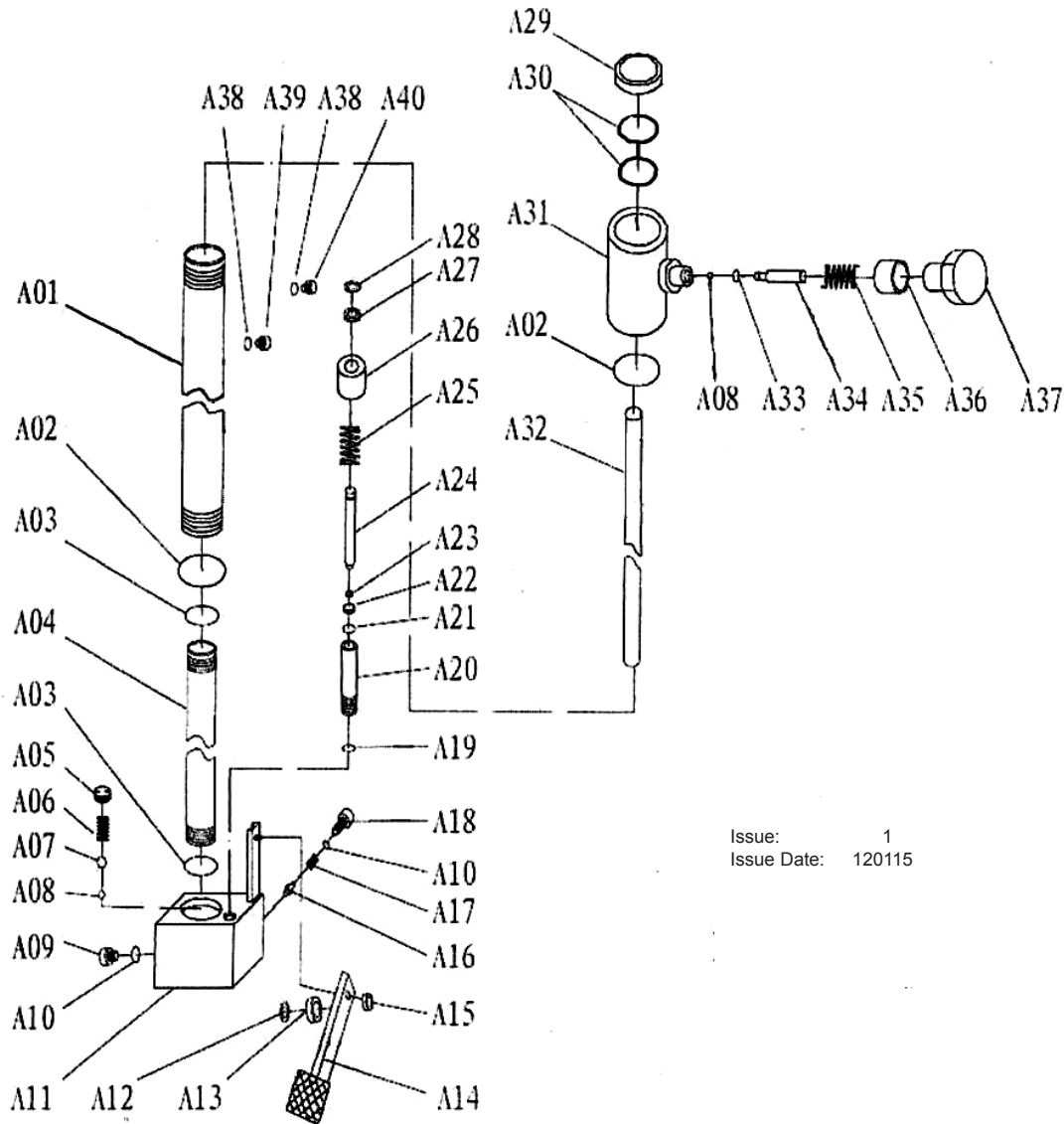
ITEM	PART NO	DESCRIPTION	ITEM	PART NO	DESCRIPTION
1	W508T.V2-01	SCREW	22	W508T.V2-22	NUT
2	W508T.V2-02	FLAT WASHER	23	W508T.V2-23	SWIVEL CASTOR
3	W508T.V2-03	SUPPORT BEAM	24	W508T.V2-24	SCREW
4	W508T.V2-04	ROLLING TUBE	26	W508T.V2-26	HYDRAULIC JACK
5	W508T.V2-05	AXLE	27	W508T.V2-27	PIN
6	W508T.V2-06	FLAT WASHER	28	W508T.V2-28	HANDLE
7	W508T.V2-07	AXLE	29	W508T.V2-29	ROLLER TUBE
8	W508T.V2-08	PIN	30	W508T.V2-30	PIN
9	W508T.V2-09	NUT	31	W508T.V2-31	LIFTING BRACKET
10	W508T.V2-10	HOOK	32	W508T.V2-32	SAFETY CHAIN
11	W508T.V2-11	COLUMN	33	W508T.V2-33	SCREW
12	W508T.V2-12	SCREW	34	W508T.V2-34	SPRING WASHER
13	W508T.V2-13	POST	35	W508T.V2-35	WASHER
14	W508T.V2-14	BOLT	36	W508T.V2-36	SPRING WASHER
15	W508T.V2-15	BOLT	37	W508T.V2-37	WASHER
16	W508T.V2-16	PIN	38	W508T.V2-38	FRONT CASTOR
20	W508T.V2-20	SPRING WASHER	39	W508T.V2-39	BASE BEAM
21	W508T.V2-21	SCREW			

NOTE: It is our policy to continually improve products and as such we reserve the right to alter data, specifications and component parts without prior notice.

IMPORTANT: No liability is accepted for incorrect use of product.

WARRANTY: Guarantee is 12 months from purchase date, proof of which will be required for any claim.

INFORMATION: For a copy of our latest catalogue and promotions call us on 01284 757525 and leave your full name and address, including postcode.



Issue: 1
 Issue Date: 120115

ITEM	PART NO	DESCRIPTION	ITEM	PART NO	DESCRIPTION	ITEM	PART NO	DESCRIPTION
A01	W508T.V2-A01	RESERVOIR	A15	W508T.V2-A15	NUT	A29	W508T.V2-A29	DUST SEAL
A02	W508T.V2-A02	O-RING	A16	W508T.V2-A16	VALVE ROD	A30	W508T.V2-A30	O-RING
A03	W508T.V2-A03	O-RING	A17	W508T.V2-A17	ADJUSTMENT SPRING	A31	W508T.V2-A31	CYLINDER HEAD
A04	W508T.V2-A04	CYLINDER	A18	W508T.V2-A18	SCREW	A32	W508T.V2-A32	RAM
A05	W508T.V2-A05	SCREW	A19	W508T.V2-A19	O-RING	A33	W508T.V2-A33	O-RING
A06	W508T.V2-A06	SPRING	A20	W508T.V2-A20	PUMP CYLINDER	A34	W508T.V2-A34	RELEASE ROD
A07	W508T.V2-A07	STEEL BALL	A21	W508T.V2-A21	O-RING	A35	W508T.V2-A35	SPRING
A08	W508T.V2-A08	STEEL BALL	A22	W508T.V2-A22	DUST SEAL	A36	W508T.V2-A36	COVER
A09	W508T.V2-A09	SCREW	A23	W508T.V2-A23	Y-SEAL	A37	W508T.V2-A37	KNOB
A10	W508T.V2-A10	O-RING	A24	W508T.V2-A24	PISTON ROD	A38	W508T.V2-A38	O-RING
A11	W508T.V2-A11	BASE	A25	W508T.V2-A25	SPRING	A39	W508T.V2-A39	AIR VENT VALVE
A12	W508T.V2-A12	SNAP RING	A26	W508T.V2-A26	DUST COVER	A40	W508T.V2-A40	SCREW
A13	W508T.V2-A13	ROLLER	A27	W508T.V2-A27	FLAT WASHER			
A14	W508T.V2-A14	FOOT PEDAL	A28	W508T.V2-A28	SNAP RING			

NOTE: It is our policy to continually improve products and as such we reserve the right to alter data, specifications and component parts without prior notice.

IMPORTANT: No liability is accepted for incorrect use of product.

WARRANTY: Guarantee is 12 months from purchase date, proof of which will be required for any claim.

INFORMATION: For a copy of our latest catalogue and promotions call us on 01284 757525 and leave your full name and address, including postcode.