

Item	Part No.	Description
1	VS290-01	Trolley Front Handle
2	VS290-02	Chassis Panel (450x140x170mm)
3	VS290-03	Display Installation Panel
4	VS290-04	Trolley Top Plate
5	VS290-05	Trolley Left Side Panel
6	VS290-06	Top Cover Fixed Edge Strip (550x17x17mm)
7	VS290-07	Chassis Back Panel (450x170x20mm)
8	VS290-08	Chassis Top Cover (737x452x171mm)

Item	Part No.	Description
9	VS290-09	Trolley Rear Handle
10	VS290-10	Trolley Rear Panel
11	VS290-11	Trolley Hook
12	VS290-12	Trolley Right Side Panel
13	VS290-13	Trolley Side Panel Connecting Plate (280x45x1.5mm)
14	VS290-14	Water Tank Upper Fixing Strip
15	VS290-15	Trolley Front Panel

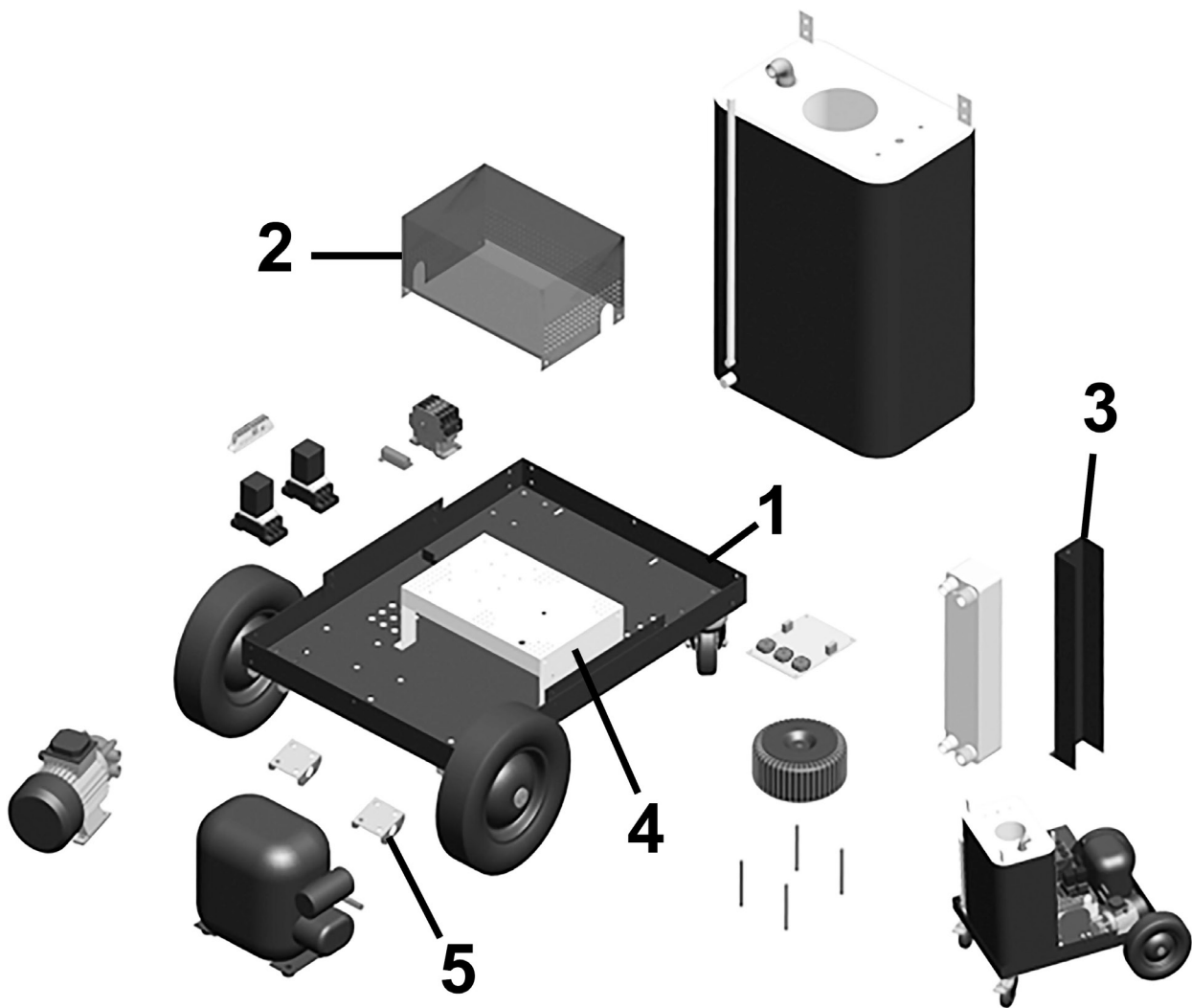
**NOTE:** It is our policy to continually improve products and as such we reserve the right to alter data, specifications and component parts without prior notice. There may be alternative versions of this product, please contact us should you require this information.

**IMPORTANT:** No liability is accepted for incorrect use of product. Spare parts must be fitted by a competent person

**WARRANTY:** Guarantee is 12 months from purchase date, proof of which will be required for any claim.



Parts Information:  
Dual AC/Coolant Cooled Induction Heater  
12kW  
Model No: VS290



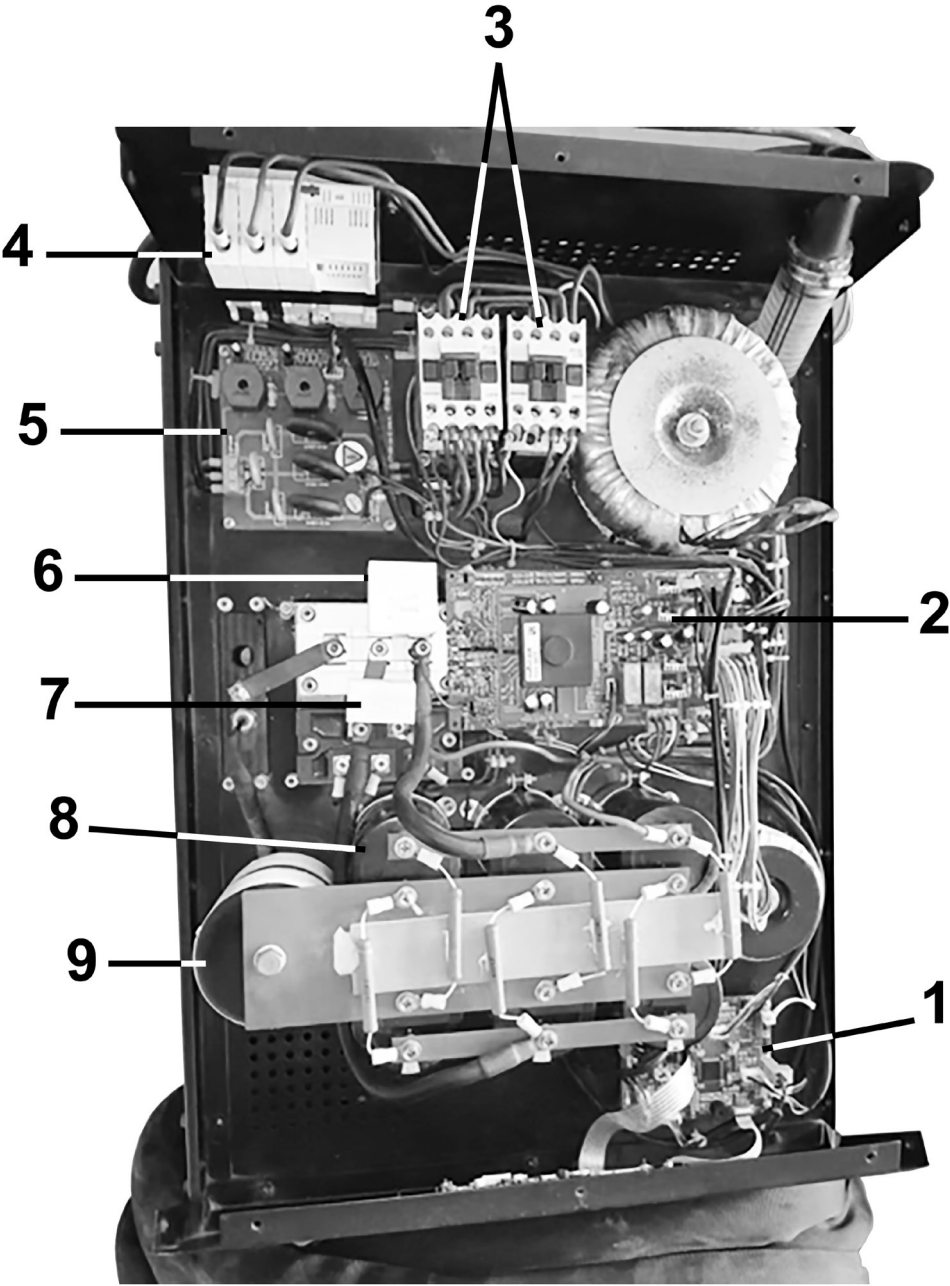
Item	Part No.	Description
1	VS290-01-01	Trolley Chassis
2	VS290-01-02	Installation Cover
3	VS290-01-03	Heat Exchanger Fixing Strip

Item	Part No.	Description
4	VS290-01-04	Mounting Bracket
5	VS290-01-05	Wheel Axle Fixing Bracket

**NOTE:** It is our policy to continually improve products and as such we reserve the right to alter data, specifications and component parts without prior notice. There may be alternative versions of this product, please contact us should you require this information.

**IMPORTANT:** No liability is accepted for incorrect use of product. Spare parts must be fitted by a competent person

**WARRANTY:** Guarantee is 12 months from purchase date, proof of which will be required for any claim.



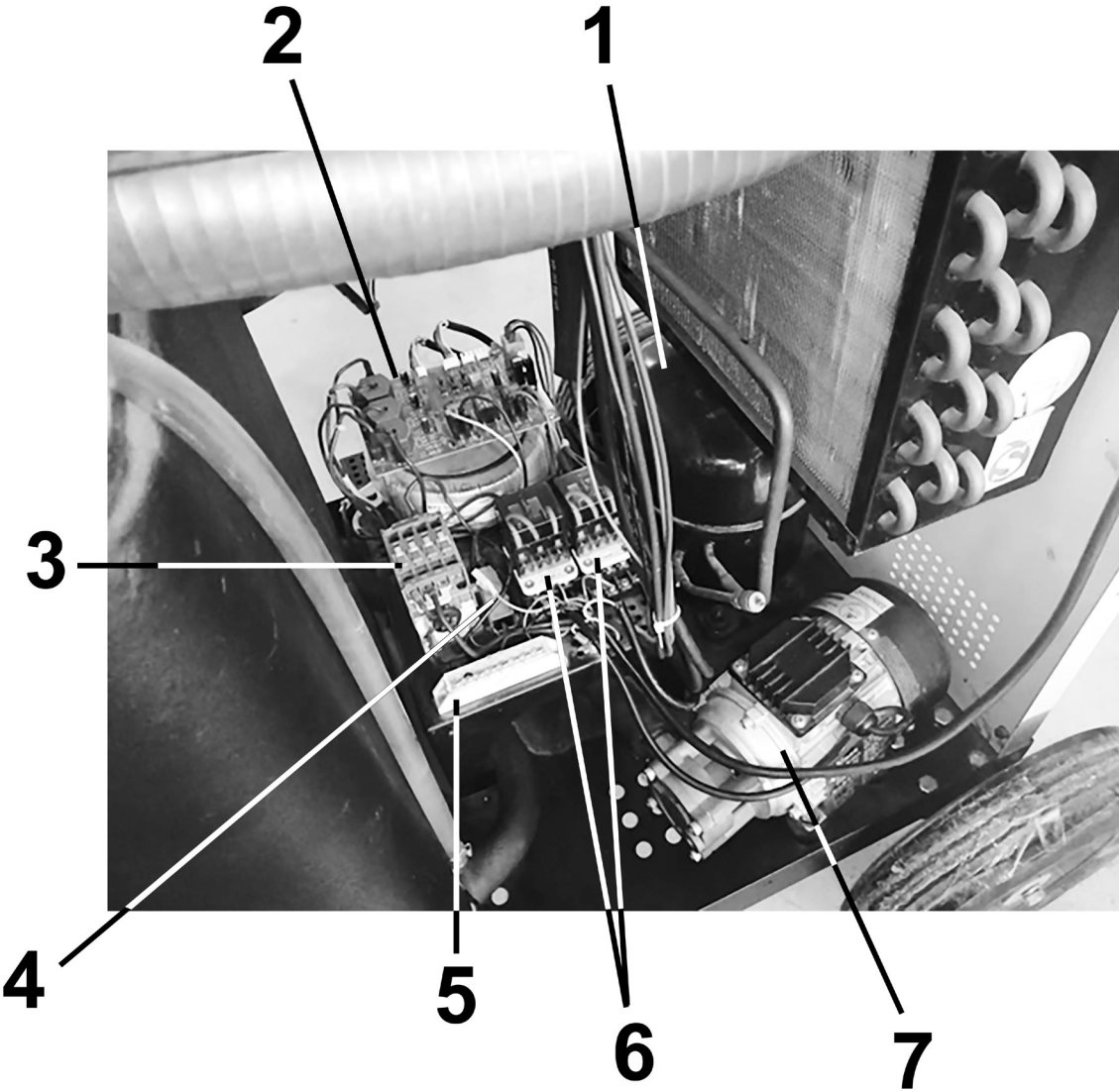
Item	Part No.	Description
1	VS290-02-01	CPU Board
2	VS290-02-02	Power Board
3	VS290-02-03	DC Contractor 24V
4	VS290-02-04	Leakage Protector
5	VS290-02-05	Phase Loss Detection Board

Item	Part No.	Description
6	VS290-02-06	Safety Capacitor
7	VS290-02-07	Safety Capacitor
8	VS290-02-08	Capacitor 3300uF 400V
9	VS290-02-09	Capacitor 6uF 500V

**NOTE:** It is our policy to continually improve products and as such we reserve the right to alter data, specifications and component parts without prior notice. There may be alternative versions of this product, please contact us should you require this information.

**IMPORTANT:** No liability is accepted for incorrect use of product. Spare parts must be fitted by a competent person

**WARRANTY:** Guarantee is 12 months from purchase date, proof of which will be required for any claim.



Item	Part No.	Description
1	VS290-03-01	Compressor
2	VS290-03-02	Refrigeration Control Panel
3	VS290-03-03	AC Contactor
4	VS290-03-04	Aluminum Shell Resistor

Item	Part No.	Description
5	VS290-03-05	Safety High Current Terminal
6	VS290-03-06	Relay (including Base)
7	VS290-03-07	Hot Water/Oil Pump 220V 160W 50Hz

**NOTE:** It is our policy to continually improve products and as such we reserve the right to alter data, specifications and component parts without prior notice. There may be alternative versions of this product, please contact us should you require this information.

**IMPORTANT:** No liability is accepted for incorrect use of product. Spare parts must be fitted by a competent person

**WARRANTY:** Guarantee is 12 months from purchase date, proof of which will be required for any claim.