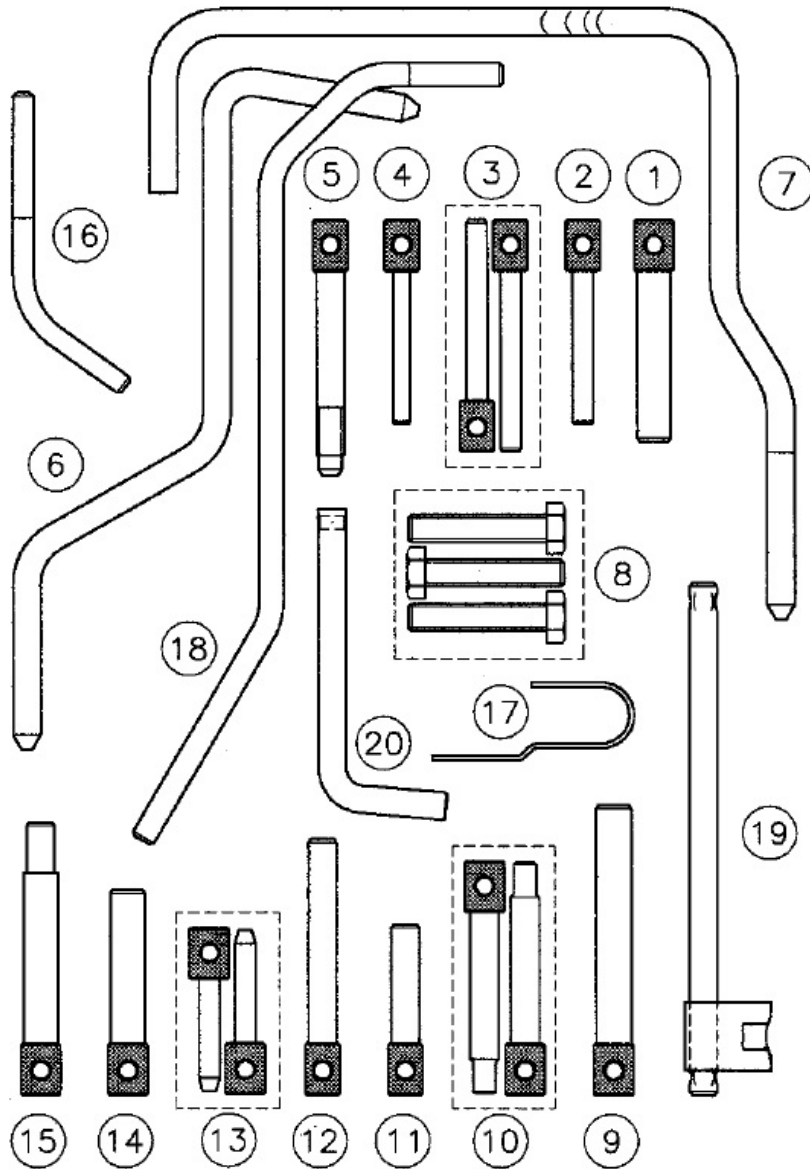


Parts Information:
Diesel/Petrol Engine Setting/Locking Kit
25pc - Citroen, Peugeot - Belt Drive
Model No: VS121



Item	Part No.	Description
1	VS125/C1	INJ.PUMP LOCKING PIN
2	VS125/C2	INJ.PUMP LOCKING PIN
3	VS125/C3	BAL.SHAFT LOCK PINS (PAIR)
4	VS125/C4	INJECTOR PUMP LOCKING PIN
5	VS125/C5	CAM LOCKING PIN
6	VS125/C6	FLYWHEEL LOCKING PIN
7	VS125/C8	FLYWHEEL LOCKING PIN
8	VS125/M8	LOCKING BOLTS (SET OF 3)
9	VS125/P1	CRANK/CAM LOCKING PIN
10	VS125/P2	CAM LOCKING PINS (PAIR)
11	VS125/P3	CAM LOCKING PIN

Item	Part No.	Description
12	VS125/P4	CRANK/CAM LOCKING PIN
13	VS125/P5	CAM LOCKING PINS (PAIR)
14	VS125/P6	CRANK/CAM LOCKING PIN
15	VS125/P7	CRANK LOCKING PIN
16	VS125/P8	FLYWHEEL LOCKING PIN
17	VS125/T1	RETAINING PIN (SO)
18	VS125/T4	TENSIONER TOOL
19	VS1252	TENSIONER ADJUSTER
20	VS1253	TENSIONER ADJUSTER
--	VS121/84	CASE & INSERT (NOT SHOWN)
--	VS-TAG	WARNING TAG (NOT SHOWN)

NOTE: It is our policy to continually improve products and as such we reserve the right to alter data, specifications and component parts without prior notice.

IMPORTANT: No liability is accepted for incorrect use of product.

WARRANTY: Guarantee is 12 months from purchase date, proof of which will be required for any claim.