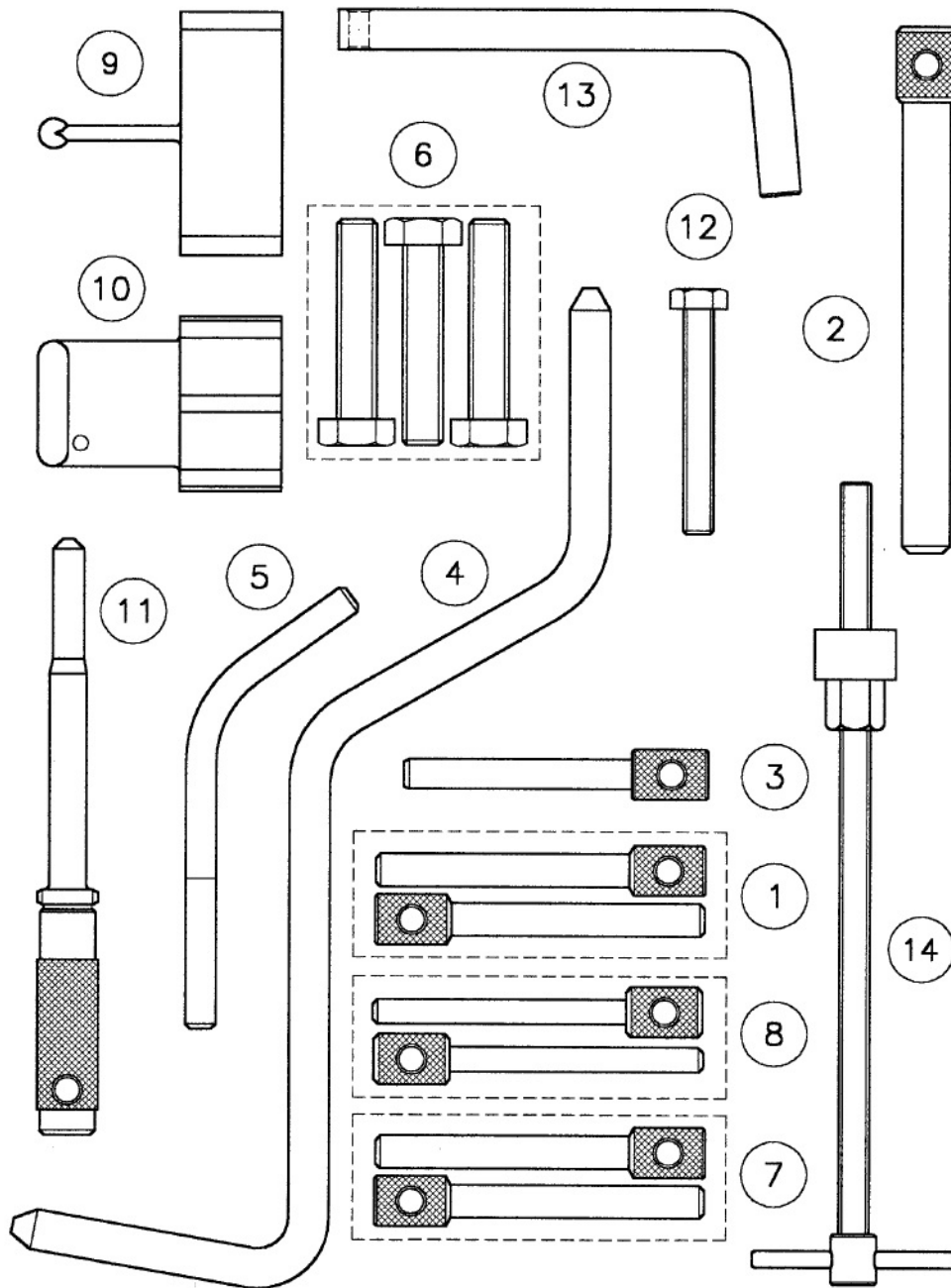


Parts Information:  
**Diesel/Petrol Engine Setting/Locking Kit -**  
**Land Rover/MG/Rover - Belt Drive**  
**Model No: VS120**



Item	Part No.	Description
1	VS103/2	PIN, LOCKING 6.6mm
2	VS120/01	INJECTIONPUMP LOCKING PIN
3	VS125/C2	INJ.PUMP LOCKING PIN
4	VS125/C6	FLYWHEEL LOCKING PIN
5	VS125/P8	FLYWHEEL LOCKING PIN
6	VS125/M8	LOCKING BOLTS (SET OF 3)
7	VS170/1	PIN, LOCKING (PAIR)
8	VS170/2	LOCKING PIN

Item	Part No.	Description
9	VS170/5	CAMSHAFT LOCKING TOOL ROVER 2.0 M16 & T1
10	VS170/6	CAMSHAFT LOCKING TOOL ROVER 1.4 K16
11	VS170/10	BALANCER PIN
12	VS125/T3	ADJUSTING NUT M6 x 1.5 X 50mm
13	VS125/3	TENSIONER ADJUSTER
14	VS120/1	TENSIONER TOOL
--	VS120/84	CASE & INSERT (NOT SHOWN)
--	VS-TAG	WARNING TAG (NOT SHOWN)

**NOTE:** It is our policy to continually improve products and as such we reserve the right to alter data, specifications and component parts without prior notice.

**IMPORTANT:** No liability is accepted for incorrect use of product.

**WARRANTY:** Guarantee is 12 months from purchase date, proof of which will be required for any claim.