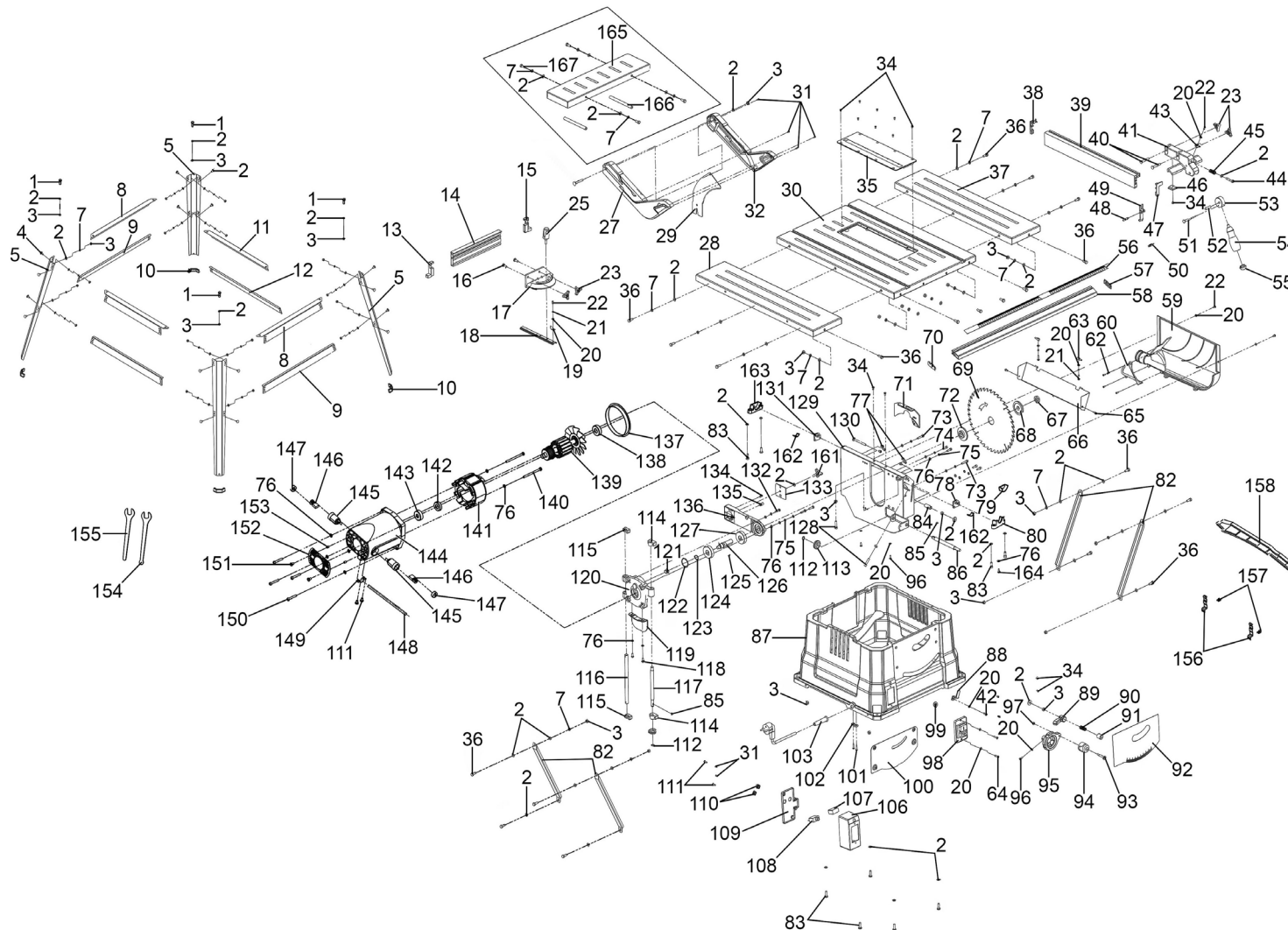




Parts Information:
Table Saw Ø254mm 230V
Model No: TS10P.V2



NOTE: It is our policy to continually improve products and as such we reserve the right to alter data, specifications and component parts without prior notice.

There may be alternative versions of this product, please contact us should you require this information.

IMPORTANT: No liability is accepted for incorrect use of product. Spare parts must be fitted by a competent person

WARRANTY: Guarantee is 12 months from purchase date, proof of which will be required for any claim.

Sealey Group, Kempson Way, Suffolk Business Park, Bury St Edmunds, Suffolk. IP32 7AR



01284 757500



sales@sealey.co.uk



www.sealey.co.uk



Parts Information:
Table Saw Ø254mm 230V
Model No: TS10P.V2

Item	Part No.	Description	Qty
1	SS625.S	Hex Head Set Screw M6 x 25mm	4
2	FWM6.S	Flat Washer M6	68
3	SN6.S	Steel Nut M6	39
4	MSC612.SB	Csk Phillips Machine Screw M6 x 12mm Black	16
5	TS10P.V2-05	Stand Leg	4
7	SWM6.S	Spring Washer M6	37
8	TS10P.V2-08	Cross Beam A	2
9	TS10P.V2-09	Cross Beam B	2
10	TS10P.V2-10	Stand Foot	4
11	TS10P.V2-11	Cross Beam C	2
12	TS10P.V2-12	Cross Beam D	2
13	TS10P.V2-13	End Cap	1
14	TS10P.V2-14	Mitre Fence	1
15	TS10P.V2-15	End Cap	1
16	CBN616.S	Coach Bolt M6 x 16mm	2
17	TS10P.V2-17	Mitre Gauge	1
18	TS10P.V2-18	Guide Bar	1
19	TS10P.V2-19	Pointer	1
20	FWM4.S	Flat Washer M4	11
21	SWM4.S	Spring Washer M4 Zinc	3
22	MSP48.S	Machine Screw Pan Head Phillips M4 x 8 mm	4
23	TS10P.V2-23	Locking Knob (A)	4
25	TS10P.V2-25	Locking Knob (B)	1
27	TS10P.V2-27	Blade Guard (Left)	1
28	TS10P.V2-28	Extension Table (Left)	1
29	TS10P.V2-29	Bracket	1
30	TS10P.V2-30	Main Table	1
31	TS10P.V2-31	Self Tapping Screw ST2.9 x 8mm	6
32	TS10P.V2-32	Blade Guard (Right)	1
34	MSC48.S	Csk Phillips Machine Screw M4 x 8mm	15
35	TS10P.V2-35	Table Insert	1
36	SS616.S	Hex Head Set Screw M6 x 16mm	20
37	TS10P.V2-37	Extension Table (Right)	1
38	TS10P.V2-38	End Cap	1
39	TS10P.V2-39	Fence	1
40	CBN640.S	Coach Bolt M6 x 40mm	2
41	TS10P.V2-41	Fence Guide Bracket	1
42	MSP410.S	Machine Screw Pan Head Phillips M4 x 10mm	1
43	TS10P.V2-43	Pointer	1

Item	Part No.	Description	Qty
44	TS10P.V2-44	Bolt	1
45	TS10P.V2-45	Spring	1
46	TS10P.V2-46	Sliding Bracket	1
47	TS10P.V2-47	End Cap	1
48	TS10P.V2-48	Pin	1
49	TS10P.V2-49	Locking Jaw Face	1
50	TS10P.V2-50	Locking Jaw Force Plate	1
51	TS10P.V2-51	Split Pin 3 x 25mm	1
52	TS10P.V2-52	Shaft Pin	1
53	TS10P.V2-53	Locking Cam	1
54	TS10P.V2-54	Handle Grip	1
55	TS10P.V2-55	Handle Cap	1
56	TS10P.V2-56	Table Scale Ruler	1
57	TS10P.V2-57	Scale Ruler Pointer	1
58	TS10P.V2-58	Table Scale Ruler Bracket	1
59	TS10P.V2-59	Dust Chute	1
60	TS10P.V2-60	Dust Chute Cover	1
62	TS10P.V2-62	Self Tapping Screw ST2.9 x 9.5mm	4
63	TS10P.V2-63	Pin	2
64	MSP414.S	Machine Screw Pan Head Phillips M4 x 14mm	4
65	SCB48.S	Socket Cap Bolt M4 x 8mm	2
66	TS10P.V2-66	Following Plate	1
67	TS10P.V2-67	Locking Nut M16 x 1.5mm	1
68	TS10P.V2-68	Outer Blade Flange	1
69	TS10P.60	Blade Ø254mm x 2.8mm Ø16mm Bore 40TPU (Please See Catalogue)	1
70	TS10P.V2-70	End Plate	1
71	TS10P.V2-71	Cover	1
72	TS10P.V2-72	Inner Blade Flange	1
73	SCB525.S	Socket Cap Bolt M5 x 25mm	2
74	SCB516.S	Socket Cap Bolt M5 x 16mm	4
75	SWM5.S	Spring Washer M5	9
76	FWM5.S	Flat Washer M5	18
77	SCB56.SB	Socket Cap Bolt M5 x 6mm Black	6
78	TS10P.V2-78	Tilting Bracket	1
79	TS10P.V2-79	Stopper	1
80	TS10P.V2-80	Tilting Bracket Seat	1
82	TS10P.V2-82	Strut	4
83	SCB616.S	Socket Cap Bolt M6 x 16mm	9
84	TS10P.V2-84	Sleeve	1
85	TS10P.V2-85	Woodruff Key 4 x 8mm	2

NOTE: It is our policy to continually improve products and as such we reserve the right to alter data, specifications and component parts without prior notice. There may be alternative versions of this product, please contact us should you require this information.

IMPORTANT: No liability is accepted for incorrect use of product. Spare parts must be fitted by a competent person

WARRANTY: Guarantee is 12 months from purchase date, proof of which will be required for any claim.

Sealey Group, Kempson Way, Suffolk Business Park, Bury St Edmunds, Suffolk. IP32 7AR



01284 757500



sales@sealey.co.uk



www.sealey.co.uk



Parts Information:
Table Saw Ø254mm 230V
Model No: TS10P.V2

Item	Part No.	Description	Qty
86	TS10P.V2-86	Adjusting Rod	1
87	TS10P.V2-87	Table Saw Base	1
88	TS10P.V2-88	Pointer	1
89	TS10P.V2-89	Locking Handle	1
90	TS10P.V2-90	Locking Handle Spring	1
91	TS10P.V2-91	Locking Handle End Cap	1
92	TS10P.V2-92	Tilting Scale Face Plate	1
93	TS10P.V2-93	Handwheel Knob Screw	1
94	TS10P.V2-94	Handwheel Knob	1
95	TS10P.V2-95	Handwheel	1
96	MSP412.S	Machine Screw Pan Head Phillips M4 x 12mm	3
97	SN5.S	Steel Nut M5	1
98	TS10P.V2-98	On/Off Switch (KJD22)	1
99	TS10P.V2-99	Rubber Ring	1
100	TS10P.V2-100	Face Plate	1
101	TS10P.V2-101	Self Tapping Screw ST3.5 x 19mm	2
102	TS10P.V2-102	Cable Clamp	1
103	TS10P.V2-103	Cable Sleeve	1
106	TS10P.V2-106	Switch Box	1
107	TS10P.V2-107	Condensor 0.33µF	1
108	TS10P.V2-108	Overload Switch	1
109	TS10P.V2-109	Switch Box Cover	1
110	TS10P.V2-110	Cable Gland	2
111	TS10P.V2-111	Self Tapping Screw ST4.2 x 12mm	4
112	TS10P.V2-112	Retaining Ring 10mm	2
113	TS10P.V2-113	Beval Gear	2
114	TS10P.V2-114	Stopper	2
115	TS10P.V2-115	Guide Bracket	2
116	TS10P.V2-116	Guide Rod	1
117	TS10P.V2-117	Adjusting Rod	1
118	MSP512.S	Machine Screw Pan Head Phillips M5 x 12mm	2
119	TS10P.V2-119	Cover Plate	1
120	TS10P.V2-120	End Cover	1
121	TS10P.V2-121	Bushing	1
122	TS10P.V2-122	Retaining Ring 35mm	1
123	TS10P.V2-123	Retaining Ring 16mm	1
124	TS10P.V2-124	Gear	1
125	TS10P.V2-125	Woodruff Key (5 x 6.5 x 16)	1
126	TS10P.V2-126	Drive Shaft	1
127	B/6003	Bearing 6003	1

Item	Part No.	Description	Qty
128	SCB625.S	Socket Cap Bolt M6 x 25mm	2
129	TS10P.V2-129	Main Frame	1
130	TS10P.V2-130	Coach Bolt M6 x 65m	1
131	TS10P.V2-131	Angle Bracket	1
132	MSP520.S	Machine Screw Pan Head Phillips M5 x 20mm	3
133	TS10P.V2-133	Cover Plate	1
134	TS10P.V2-134	Pin (A)	1
135	TS10P.V2-135	Pin (B)	1
136	TS10P.V2-136	Gear Shaft Bracket	1
137	TS10P.V2-137	Protection Ring	1
138	B/6201	Bearing 6201	1
139	TS10P.V2-139	Rotor	1
140	TS10P.V2-140	Self Tapping Screw ST5 x 60mm	2
141	TS10P.V2-141	Stator	1
142	B/6001	Bearing 6001	1
143	TS10P.V2-143	Rubber Washer	1
144	TS10P.V2-144	Motor Housing	1
145	TS10P.V2-145	Carbon Brush Holder	2
146	TS10P.V2-146	Carbon Brush	2
147	TS10P.V2-147	Carbon Brush Holder Cap	2
148	TS10P.V2-148	Lead Wire	1
149	TS10P.V2-149	Fix Plate	1
150	MSP525.S	Machine Screw Pan Head Phillips M5 x 25mm	4
151	MSP58.S	Machine Screw Pan Head Phillips M5 x 8mm	2
152	TS10P.V2-152	End Plate, Motor Housing	1
153	GSM58.S	Grub Screw M5 x 8mm	2
154	TS10P.V2-154	Wrench (A)	1
155	TS10P.V2-155	Wrench (B)	1
156	TS10P.V2-156	Clip for Push Rod	2
157	TS10P.V2-157	Self Tapping Screw ST3.2 x 10mm	4
158	TS10P.V2-158	Push Rod	1
161	TS10P.V2-161	Knob for Gear Shaft Bracket	1
162	TS10P.V2-162	Spacer	2
163	TS10P.V2-163	Bracket	1
164	TS10P.V2-164	Self Tapping Screw ST3.9 x 10mm	1
165	TS10P.V2-165	Rear Extension Table	1
166	TS10P.V2-166	Sleeve	2
167	SS612.S	Hex Head Set Screw M6 x 12mm	4
--	TS10P-V2-RF	Rip Fence Assembly (Not Shown)	1

NOTE: It is our policy to continually improve products and as such we reserve the right to alter data, specifications and component parts without prior notice. There may be alternative versions of this product, please contact us should you require this information.

IMPORTANT: No liability is accepted for incorrect use of product. Spare parts must be fitted by a competent person

WARRANTY: Guarantee is 12 months from purchase date, proof of which will be required for any claim.

Sealey Group, Kempson Way, Suffolk Business Park, Bury St Edmunds, Suffolk. IP32 7AR



01284 757500



sales@sealey.co.uk



www.sealey.co.uk