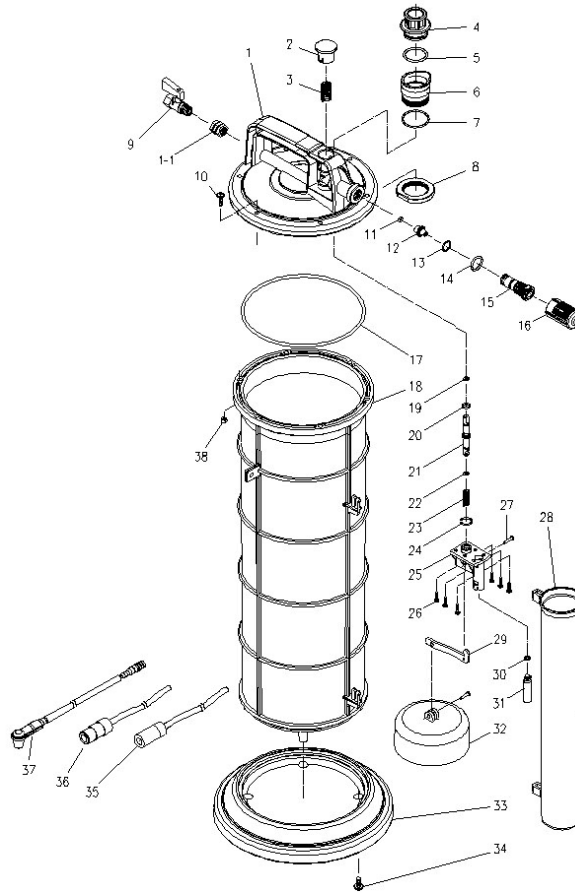




Parts Information:
Vacuum Oil & Fluid Extractor Air Operated
9ltr
Model No: TP6903



Item	Part No.	Description
1	TP6903.V2-01	COVER HOUSING
1-1	TP6903.V2-01A	INSERT NUT
2	TP6903.V2-02	PUSH BUTTON
3	TP6903.V2-03	SPRING
4	TP6903.V2-04	FLUID INLET COUPLER
5	TP6901.V2-05	O-RING 25.2x2.7mm
6	TP6901.V2-06	FLUID OUTLET HOUSING
7	TP6901.V2-07	O-RING 31x1.0mm
8	TP6901.V2-08	LOCK NUT
9	TP6903.V2-09	AIR VALVE
10	MSP520.SB	MACHINE SCREW PAN HEAD PHILLIPS M5x20mm
11	TP6903.V2-11	O-RING 4.8x1.5mm
12	TP6903.V2-12	VACUUM VALVE
13	TP6903.V2-13	O-RING 11.0x2.0mm
14	TP6903.V2-14	O-RING 16.3x2.4mm
15	TP6903.V2-15	VACUUM BODY
16	TP6903.V2-16	MUFFLER SHELL ASSEMBLY
17	TP6901.V2-17	O-RING 154.3x3.5mm
18	TP6901.V2-18	RESERVOIR TANK

Item	Part No.	Description
19	TP6903.V2-22	O-RING 3.8 x 1.9mm
20	TP6903.V2-20	O-RING 6.0x2.0mm
21	TP6903.V2-21	SHAFT
22	TP6903.V2-22	O-RING 3.8 x 1.9mm
23	TP6903.V2-23	SPRING
24	TP6903.V2-24	O-RING 13.0x2.0mm
25	TP6903.V2-25	SAFETY VALVE HOUSING
26	TP6901.V2-20	SCREW 3.8x10mm
27	TP6901.V2-19	PIN
28	TP6901.V2-22	TUBE STORAGE UNIT
29	TP6903.V2-29	ARM
30	TP6903.V2-30	O-RING 4.47x1.78mm
31	TP6903.V2-31	SAFETY CUP
32	TP6901.V2-21	FLOAT
33	TP6903.V2-33	BASE
34	TP6901.V2-24	RD HEAD S/T SCREW M6X15
35	TP6901.V2-45	MAIN SUCTION TUBE (c/w ADAPTOR)
36	TP6901.V2-46	EXTRACTING TUBE (c/w ADAPTOR)
37	TP6903.V2-37	BRAKE TUBE (c/w RUBBER FITTING)
38	SN5.SB	STEEL NUT M5 BLACK (SINGLE)

NOTE: It is our policy to continually improve products and as such we reserve the right to alter data, specifications and component parts without prior notice.

IMPORTANT: No liability is accepted for incorrect use of product.

WARRANTY: Guarantee is 12 months from purchase date, proof of which will be required for any claim.

Sealey Group, Kempson Way, Suffolk Business Park, Bury St Edmunds, Suffolk. IP32 7AR



01284 757500



01284 703534



sales@sealey.co.uk



www.sealey.co.uk