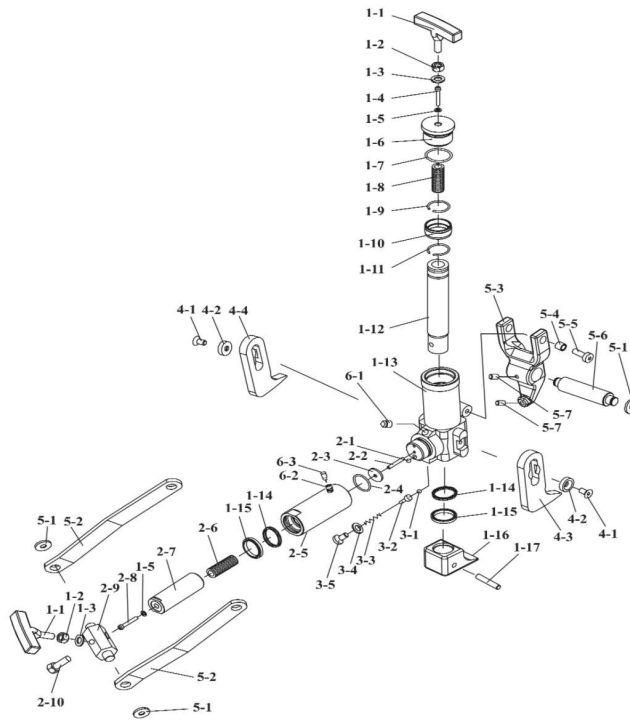




Parts Information:  
**Hydraulic Bead Breaker**  
**Model No: TC966**



Item	Part No.	Description
1-1	TC966.01-1	HANDLE
1-2	SN12.S	STEEL NUT M12 ZINC DIN934(SINGLE)
1-3	FWM12.S	FLAT WASHER M12 SINGLE
1-4	SCB645.SB	SOCKET HEAD CAP SCREW M6x45 BLACK
1-5	TC966.01-5	COPPER WASHER (M5)
1-6	TC966.01-6	CYLINDER CAP
1-7	TC966.01-7	O-RING
1-8	TC966.01-8	SPRING
1-9	TC966.01-9	SNAP RING
1-10	TC966.01-10	BUSHING
1-11	TC966.01-11	SNAP RING
1-12	TC966.01-12	PISTON ROD
1-13	TC966.01-13	CYLINDER BODY
1-14	TC966.01-14	Y-SEAL
1-15	TC966.01-15	BUSHING
1-16	TC966.01-16	LEG
1-17	TC966.01-17	PIN
2-1	RJA1500.01-02	STEEL BALL 15/64"
2-2	TC966.02-2	SCREW (M6x30)
2-3	RW625.S	REPAIR WASHER M6x25 (SINGLE)
2-4	TC966.02-4	O-RING
2-5	TC966.02-5	CYLINDER
2-6	TC966.02-6	SPRING
2-7	TC966.02-7	PISTON ROD

Item	Part No.	Description
2-8	SCB645.SB	SOCKET HEAD CAP SCREW M6x45 BLACK
2-9	TC966.02-9	JOINT BLOCK
2-10	HHB1255.S	HEX HEAD BOLT M12x55mm SINGLE
3-1	SB-8.0	STEEL BALL 8.0mm
3-2	TC966.03-2	BALL SEAT
3-3	TC966.03-3	SPRING
3-4	TC966.03-4	COPPER WASHER (12mm)
3-5	TC966.03-5	SCREW (M10X30)
4-1	MSCS1015.SB	CSK SOCKET MACHINE SCREW M10x16mm BLACK
4-2	TC966.04-2	BUSHING
4-3	TC966.04-3	LEFT FOOT
4-4	TC966.04-4	RIGHT FOOT
5-1	TC966.05-1	SNAP RING
5-2	TC966.05-2	CONNECTION ROD
5-3	TC966.05-3	CLAW
5-4	TC966.05-4	BUSHING
5-5	SCB1025.SB	SOCKET HEAD CAP SCREW M10x25 BLACK
5-6	TC966.05-6	SHAFT
5-7	TC966.05-7	SCREW
6-1	TC966.06-1	PLUG
6-2	610/SJ10	COUPLING RING
6-3	610/SJ15	BOLT M13X25
--	TC966.RC	REDUCING BUSHING (NOT SHOWN)

**NOTE:** It is our policy to continually improve products and as such we reserve the right to alter data, specifications and component parts without prior notice.

**IMPORTANT:** No liability is accepted for incorrect use of product.

**WARRANTY:** Guarantee is 12 months from purchase date, proof of which will be required for any claim.

**Sealey Group**, Kempson Way, Suffolk Business Park, Bury St Edmunds, Suffolk. IP32 7AR



01284 757500



01284 703534



sales@sealey.co.uk



www.sealey.co.uk