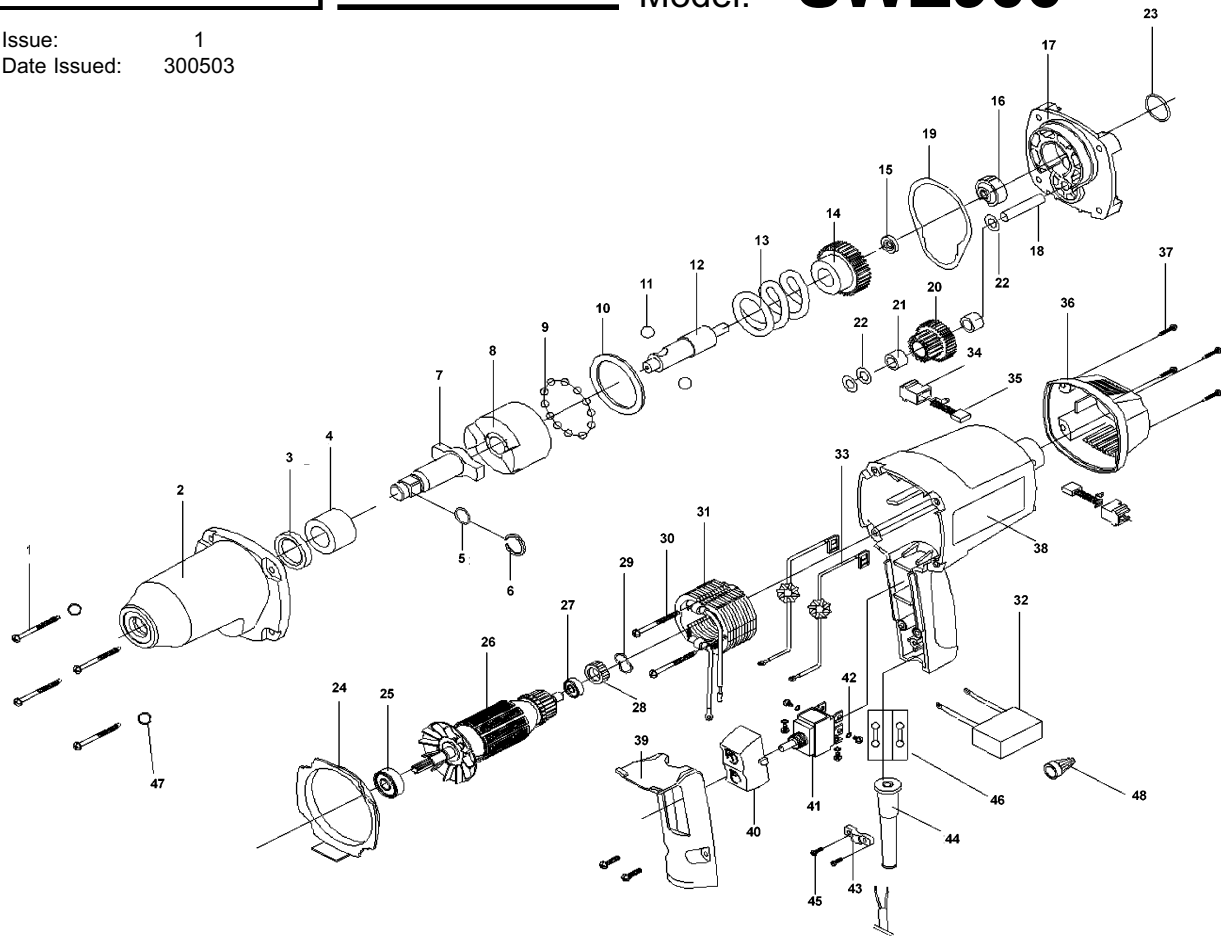




INSTRUCTIONS FOR: ELECTRIC IMPACT WRENCH

Model: SWE900

Issue: 1
Date Issued: 300503



Item	Part No.	Description
1	SWE900/01	Screw
2	SWE900/02-1-1	Gear Case
3	SWE900/02-1-2	O ring
4	SWE900/02-1-3	Bush
5	SWE900/02-3-1	Washer
6	SWE900/02-3-2	Spring ring
7	SWE900/02-3-3	Shaft
8	SWE900/02-4-1	Impactor
9	SWE900/02-4-2	Steel ball
10	SWE900/02-4-3	Washer
11	SWE900/02-4-4	Steel ball
12	SWE900/02-4-5	Cam
13	SWE900/02-4-6	Spring
14	SWE900/02-4-7	Gear
15	SWE900/02-5	Washer
16	SWE900/02-6-1	Bearing
17	SWE900/02-6-2	Gear case cover
18	SWE900/02-6-3	Spindle
19	SWE900/03	Gasket
20	SWE900/04-1	Gear and pinion
21	SWE900/04-2	Needle bearing
22	SWE900/05	Washer
23	SWE900/06	Rubber washer
24	SWE900/07	Fan baffle
25	SWE900/08	Bearing

Item	Part No.	Description
26	SWE900/09	Armature assembly
27	SWE900/10	Bearing
28	SWE900/11	Bearing cap
29	SWE900/12	Washer
30	SWE900/13	Screw
31	SWE900/14	Field assembly
32	SWE900/15	Capacitor
33	SWE900/16	Inductance
34	SWE900/17	Brush holder
35	SWE900/18	Brush
36	SWE900/19	Rear cover
37	SWE900/20	Screw
38	SWE900/21	Motor housing
39	SWE900/22	Handle cover
40	SWE900/23	Switch button
41	SWE900/24	Eaton switch
42	SWE900/25	Washer
43	SWE900/26	Strain relief
44	SWE900/27	Cord guard
45	SWE900/29	Screw
46	SWE900/30	Connector
47	SWE900/32	Spring washer
48	SWE900/33	Connector

NOTE: It is our policy to continually improve products and as such we reserve the right to alter data, specifications and component parts without prior notice.



Sole UK Distributor
Sealey Group,
Bury St. Edmunds, Suffolk.



01284 757500



sales@sealey.co.uk



01284 703534



www.sealey.co.uk