

TROUBLESHOOTING

a. The thermal circuit breaker cuts in as the motor has overheated.	1. The water level is too low 2. Intake blocked, impeller jammed. 3. Temperature of inlet water exceeds 35°C	1. Sink the pump deeper, or allow to cool before continuing use. 2. Check and clean. 3. Reduce water temperature. Allow the circuit breaker to cool for approx 25mins before restarting.
b. Motor operates but there is no suction.	4. Water level below min suction depth. 5. Air bubbles in pump accumulated during submersion, or because float is incorrectly positioned so pump does not stop at min level and sucks in air. 6. Clogged intake filter or discharge pipe	4. Stop the pump. 5. Release air by inclining the pump and re-immersing it in water. 6. Remove dirt, and clean the unit.
c. Reduced water volume for level of water	7. Discharge pipe bent, or pinched. 8. Discharge pipe too narrow. 9. Pump partially blocked.	7. Straighten pipe 8. Use wider diameter pipe. 9. Clean pump.
d. The pump will not start or suddenly stops during operation.	10. No electrical power. 11. Float not working 12. Circuit breaker has triggered. 13. Impeller is jammed.	10. Check cable, plug and fuse. 11. Contact authorised service agent. 12. See (a) above. 13. Clean the pump.

Declaration of Conformity

We, the sole importer into the UK, declare that the products listed below are in conformity with the following EEC standards and directives

SUBMERSIBLE WATER PUMP
Models: SSWP30, SSWP30A & SSWP50A
73/23/EEC Low Voltage Directive
89/336/EEC EMC Directive
BSEN 60335-2-41



The construction file for these products are held by the Manufacturer and may be inspected, by a national authority, upon request to Jack Sealey Ltd.

Signed by Mark Sweetman

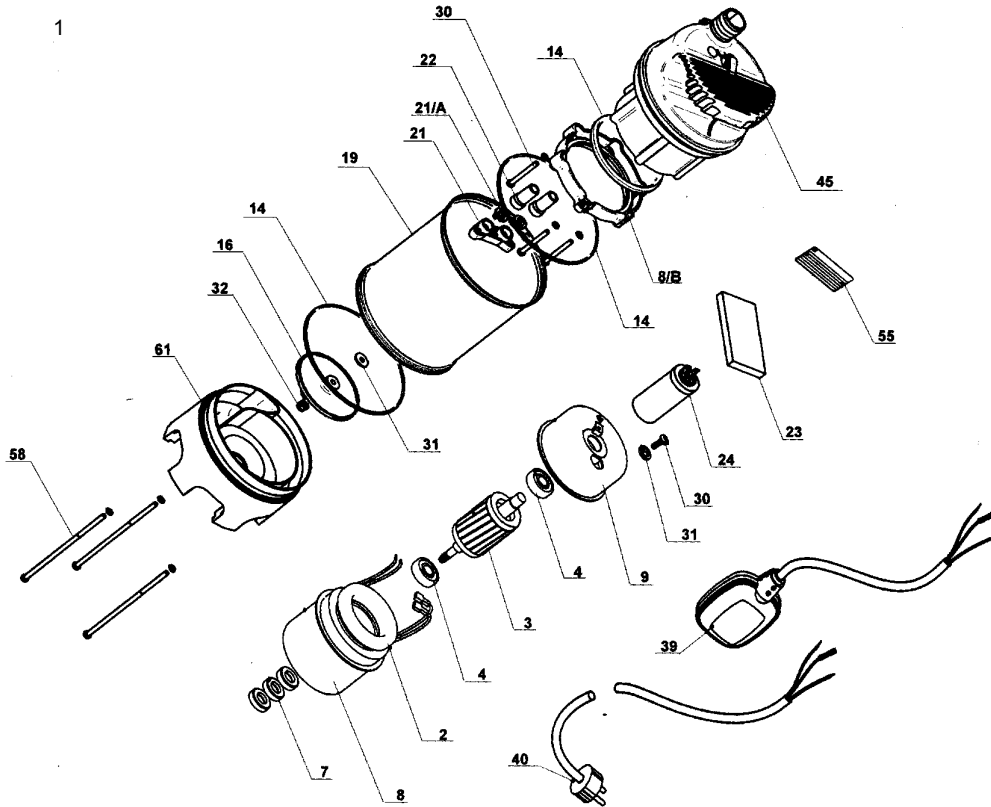
7th August 2000

For Jack Sealey Ltd.
Sole importer into the UK
of Sealey Power Products.



INSTRUCTIONS FOR: WATER PUMP MODELS: SSWP30, SSWP30A, & SSWP50A

Issue: 1
Date



Model SSWP30

Item	Part No	Description
1	EL10004	BEARING
2	EL10007	OIL SEAL
3	EL10023	SPONGE
4	EL10024	CAPACITOR
5	EL10040	H 07 RNF CABLE SCHUKO PLUG
6	EL1009A	COVER BOX
7	EL1014C	OR SEAL 139.37x2.62
8	EL20045	UPPER PUMP BODY
9	EL30016	IMPELLER
10	EL40019	STAINLESS STEEL BODY PUMP
11	EL6001C	COMPLETE MOTOR
12	EL60061	SUCTION BASE

Model SSWP50A

Item	Part No	Description
1	EL30004	BEARING
2	EL30007	OIL SEAL
3	EL60016	IMPELLER
4	EL50019	STAINLESS STEEL BODY PUMP
5	EL10023	SPONGE
6	EL50024	CAPACITOR
7	EL10039	FLOAT SWITCH
8	EL10040	H 07 RNF CABLE SCHUKO PLUG
9	EL20045	UPPER PUMP BODY
10	EL70061	SUCTION BASE
11	EL2001C	COMPLETE MOTOR
12	EL1014C	OR SEAL 139.37x2.62
13	EL1009A	COVER BOX

Model SSWP30A

Item	Part No	Description
1	EL10004	BEARING
2	EL10007	OIL SEAL
3	EL30016	IMPELLER
4	EL40019	STAINLESS STEEL BODY PUMP
5	EL10023	SPONGE
6	EL30024	CAPACITOR
7	EL10039	FLOAT SWITCH
8	EL10040	H 07 RNF CABLE SCHUKO PLUG
9	EL20045	UPPER PUMP BODY
10	EL60061	SUCTION BASE
11	EL6001C	COMPLETE MOTOR
12	EL1014C	OR SEAL 139.37x2.62
13	EL1009A	COVER BOX

NOTE: It is our policy to continually improve products and as such we reserve the right to alter data, specifications and component parts without prior notice.



Sole UK Distributor,
Sealey Group, Bury St. Edmunds, Suffolk.

01284 757500

01284 703534

sales@sealey.co.uk

www.sealey.co.uk