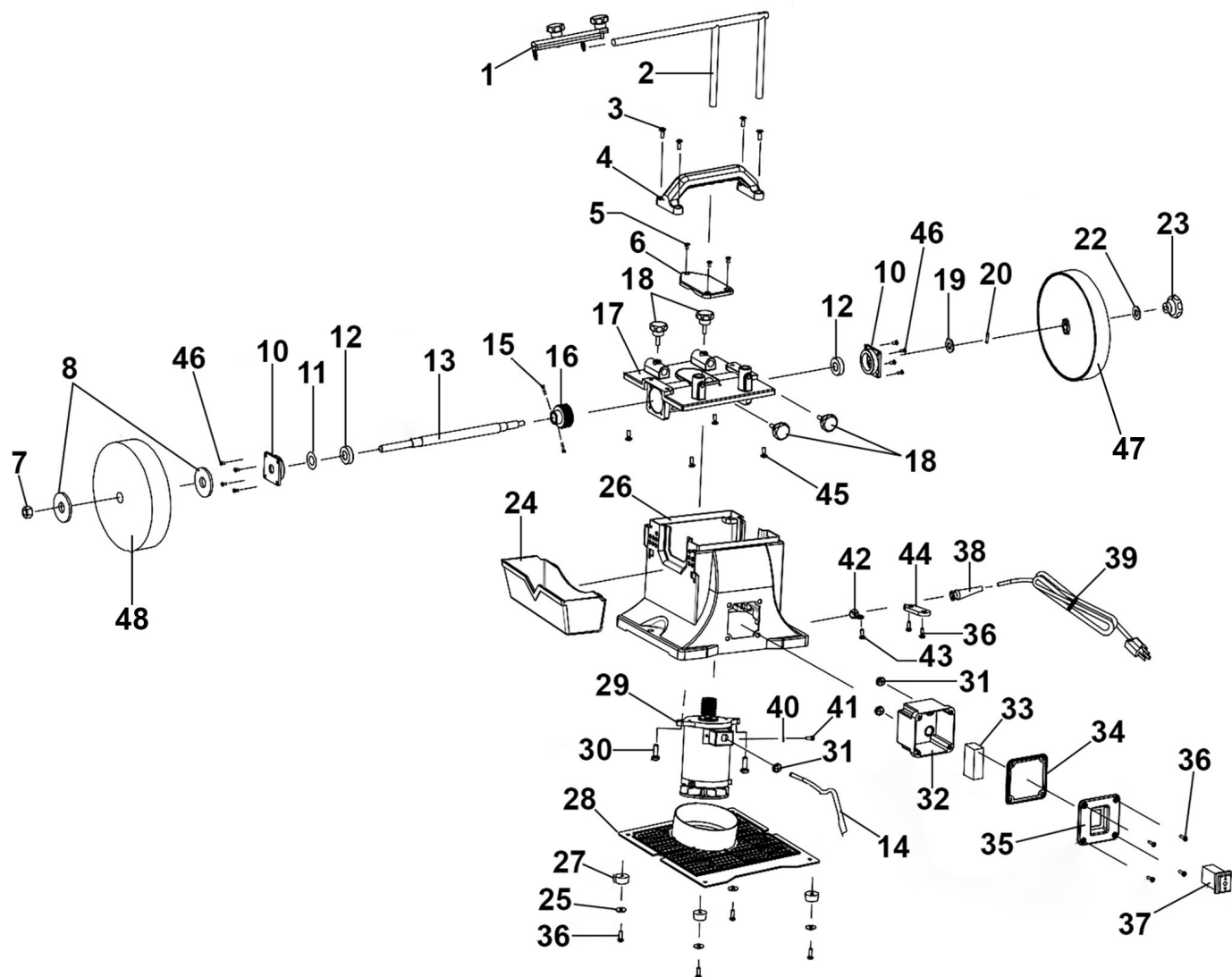


Parts Information: Sharpener Ø200mm with Honing Wheel Model No: SMS2101



Item	Part No.	Description	Qty
1	SMS2101.01	Blade Holder Assembly	1
2	SMS2101.02	Support	1
3	SMS2101.03	Phillips Screw M6 x 16mm (c/w Flat & Spring Washer)	4
4	SMS2101.04	Handle	1
5	SMS2101.05	Phillips Screw M4 x 8mm	3
6	SMS2101.06	Cover, Worm Gear Case	1
7	SN12.S	Steel Nut M12	1

Item	Part No.	Description	Qty
8	SMS2101.08	Flange	2
10	SMS2101.10	Bearing Block	1
11	SMS2101.11	Wave Washer	1
12	B/6002ZZ	Bearing 6002ZZ	2
13	SMS2101.13	Main Shaft	1
14	SMS2101.14	Cable	1
15	SMS2101.15	Phillips Screw M5 x 14mm	2

NOTE: It is our policy to continually improve products and as such we reserve the right to alter data, specifications and component parts without prior notice. There may be alternative versions of this product, please contact us should you require this information.

IMPORTANT: No liability is accepted for incorrect use of product. Spare parts must be fitted by a competent person

WARRANTY: Guarantee is 12 months from purchase date, proof of which will be required for any claim.



TM

Parts Information: Sharpener Ø200mm with Honing Wheel Model No: SMS2101

Item	Part No.	Description	Qty
16	SMS2101.16	Worm Gear	1
17	SMS2101.17	Case, Worm Gear	1
18	SMS2101.18	Knob, Plastic Ø33mm x 30mm, M6 x 10mm Threaded Male Fitting	4
19	FWM12.S	Flat Washer M12	1
20	SMS2101.20	Round Pin 5 x 22mm	1
22	FWM8.S	Flat Washer M8	1
23	SMS2101.23	Knob, Locking Ø54mm, M8 Threaded Female Fitting	1
24	SMS2101.24	Water Tank	1
25	FWM4.S	Flat Washer M4	4
26	SMS2101.26	Base	1
27	SMS2101.27	Rubber Foot	4
28	SMS2101.28	Base Plate	1
29	SMS2101.29	Motor Assembly (Internal 230V 180W)	1
30	SMS2101.30	Phillips Screw M8 x 35mm (c/w Flat & Spring Washer)	2
31	SMS2101.31	Strain Relief	3
32	SMS2101.32	Wire Connection Box	1
33	SMS2101.33	Capacitor 5µF 450V AC 50/60Hz	1

Item	Part No.	Description	Qty
34	SMS2101.34	Rubber Seal	1
35	SMS2101.35	Fixing Plate, Switch	1
36	SMS2101.36	Tapping Screw ST4.2 x 16mm	10
37	SMS2101.37	Switch, Rocker, Red (c/w Cover 16A 250V)	1
38	SMS2101.38	Cord Sleeve	1
39	SMS2101.39	Cord & Plug	1
40	SMS2101.40	Tooth Lock Washer 4mm	1
41	SMS2101.41	Phillips Screw M4 x 8mm (c/w Flat & Spring Washer)	1
42	SMS2101.42	Cord Clip	1
43	SMS2101.43	Tapping Screw ST4.2 x 8mm	1
44	SMS2101.44	Cord Plate	1
45	SMS2101.45	Phillips Screw M6 x 20mm (c/w Flat & Spring Washer)	4
46	SMS2101.46	Phillips Screw M4 x 10mm	8
47	SMS2101.HW	Honing Wheel Ø200 x 30mm x Ø12mm (Please see Catalogue)	1
48	SMS2101.SW	Sharpening Stone Ø200 x 40mm x Ø12mm (Please see Catalogue)	1

NOTE: It is our policy to continually improve products and as such we reserve the right to alter data, specifications and component parts without prior notice. There may be alternative versions of this product, please contact us should you require this information.

IMPORTANT: No liability is accepted for incorrect use of product. Spare parts must be fitted by a competent person

WARRANTY: Guarantee is 12 months from purchase date, proof of which will be required for any claim.

Sealey Group, Kempson Way, Suffolk Business Park, Bury St Edmunds, Suffolk. IP32 7AR



01284 757500



sales@sealey.co.uk



www.sealey.co.uk