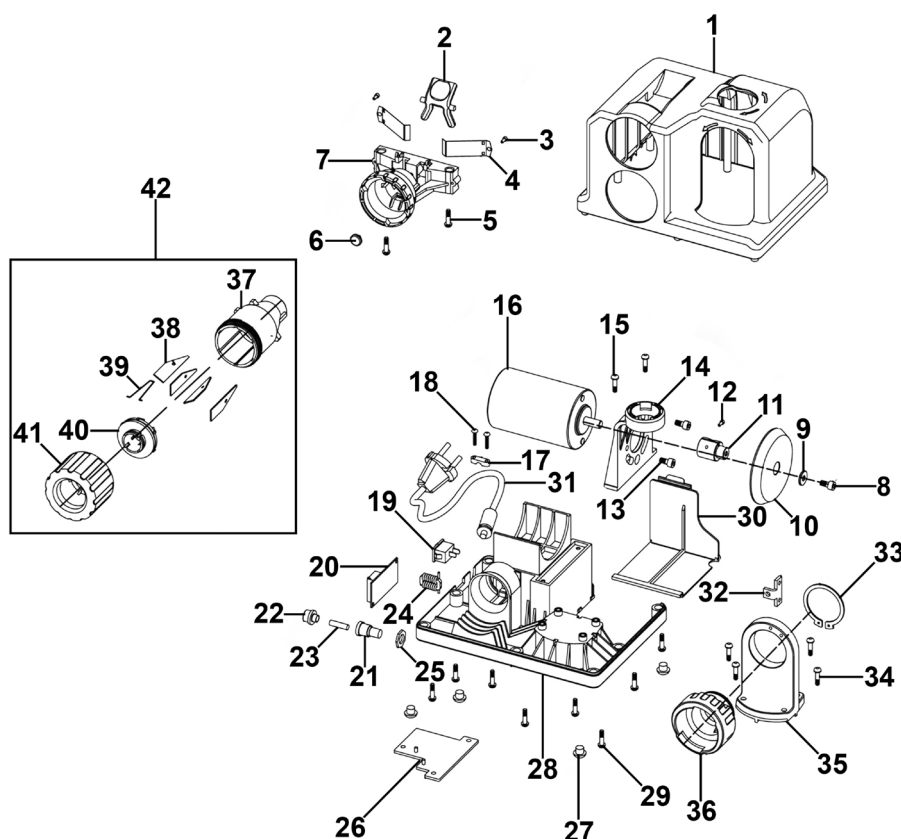


Parts Information: Benchtop Drill Bit Sharpener 80W Model No: SMS2008



| Item | Part No. | Description |
|------|------------|---|
| 1 | SMS2008.01 | Top Housing |
| 2 | SMS2008.02 | Button |
| 3 | SMS2008.03 | Screw |
| 4 | SMS2008.04 | Spring Plate |
| 5 | SMS2008.05 | Screw |
| 6 | SMS2008.06 | Terminal |
| 7 | SMS2008.07 | Fixing Shelf |
| 8 | SS610.S | Hex Head Set Screw M6 x 10mm |
| 9 | RW625.S | Repair Washer 6 x 25mm |
| 10 | SMS2008.10 | Grinding Wheel for SMS2008 (Please see Catalogue) |
| 11 | SMS2008.11 | Connector |
| 12 | SMS2008.12 | Screw |
| 13 | SMS2008.13 | Screw |
| 14 | SMS2008.14 | Positioner |
| 15 | SMS2008.15 | Screw |
| 16 | SMS2008.16 | Motor (Internal 230V 80W) |
| 17 | SMS2008.17 | Wire Retainer |
| 18 | SMS2008.18 | Screw |
| 19 | SMS2008.19 | Switch, Rocker (On/Off), Black - 6A 250V |
| 20 | SMS2008.20 | PCB, Circuit Board 46 x 28mm |
| 21 | SMS2008.21 | Fuse Block |

| Item | Part No. | Description |
|------|------------|----------------------------------|
| 22 | SMS2008.22 | Cap for Fuse Holder |
| 23 | SMS2008.23 | Fuse, Glass 2A 250V 5 x 20mm |
| 24 | SMS2008.24 | Inductance |
| 25 | SMS2008.25 | Locknut (c/w Plastic Ring) |
| 26 | SMS2008.26 | Cover |
| 27 | SMS2008.27 | Foot |
| 28 | SMS2008.28 | Base |
| 29 | SMS2008.29 | Screw |
| 30 | SMS2008.30 | Dust Cap |
| 31 | SMS2008.31 | Power Cord |
| 32 | SMS2008.32 | Connector Board |
| 33 | SM355D.77 | External Circlip ID: 44.3mm |
| 34 | SMS2008.34 | Screw |
| 35 | SMS2008.35 | Bracket |
| 36 | SMS2008.36 | Stand Support |
| 37 | SMS2008.37 | Positioner for Blade |
| 38 | SMS2008.38 | Blade Holder |
| 39 | SMS2008.39 | Steel Spring |
| 40 | SMS2008.40 | Transition Tube |
| 41 | SMS2008.41 | Plastic Locknut |
| 42 | SMS2008.42 | Hold Accessory (c/w Parts 37-41) |

NOTE: It is our policy to continually improve products and as such we reserve the right to alter data, specifications and component parts without prior notice. There may be alternative versions of this product, please contact us should you require this information.

IMPORTANT: No liability is accepted for incorrect use of product. Spare parts must be fitted by a competent person

WARRANTY: Guarantee is 12 months from purchase date, proof of which will be required for any claim.