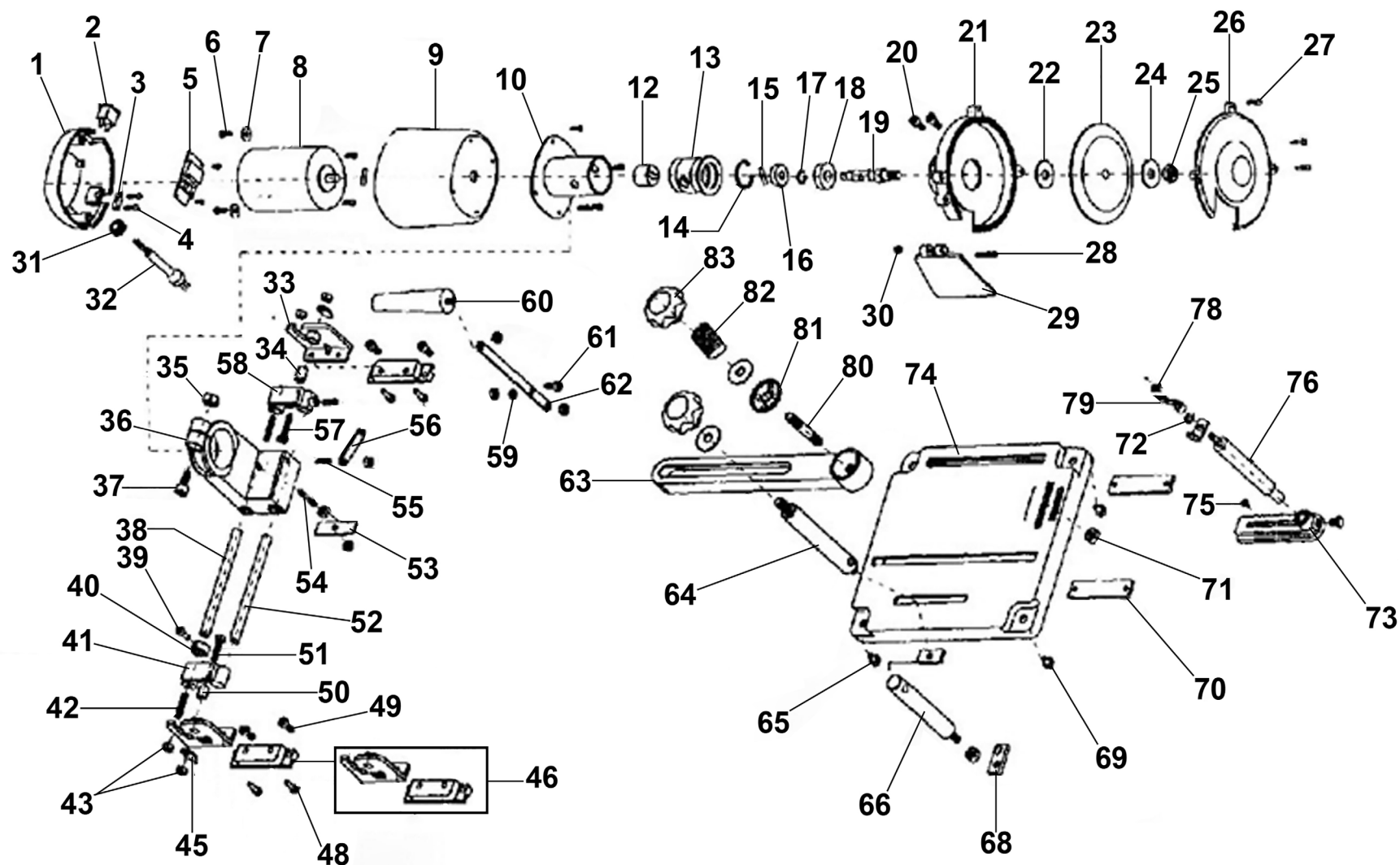


## Parts Information: Bench Mounting Saw Blade Sharpener 110W Model No: SMS2003



**NOTE:** It is our policy to continually improve products and as such we reserve the right to alter data, specifications and component parts without prior notice.

There may be alternative versions of this product, please contact us should you require this information.

**IMPORTANT:** No liability is accepted for incorrect use of product. Spare parts must be fitted by a competent person

**WARRANTY:** Guarantee is 12 months from purchase date, proof of which will be required for any claim.

Sealey Group, Kempson Way, Suffolk Business Park, Bury St Edmunds, Suffolk. IP32 7AR



01284 757500



sales@sealey.co.uk



www.sealey.co.uk



# Parts Information: Bench Mounting Saw Blade Sharpener 110W Model No: SMS2003

Item	Part No.	Description
1	SMS2003.01	Motor Cover
2	SMS2003.02	Switch, On/Off Rocker (Red) 6A 250V
3	SMS2003.03	Support, Power Cord
4	SMS2003.04	Screw
5	SMS2003.05	PCB, Circuit Board For Switch, 55 x 28mm
6	MSP425.SB	Machine Screw Pan Head Phillips M4 x 25mm Black
7	RW519.S	Repair Washer M5 x 19mm
8	SMS2003.08	Motor (Internal 230V 110W)
9	SMS2003.09	Motor Housing
10	SMS2003.10	Motor Support
12	SMS2003.12	Connecting Piece
13	SMS2003.13	Bearing Bushing
14	SMS2003.14	Internal Circlip OD: 30.2mm
15	SMS2003.15	Pin
16	B/608-2RS	Bearing 608-2RS
17	RE231V3-06	External Circlip ID: 10.9mm
18	B/6001-2RS	Bearing 6001-2RS
19	SMS2003.19	Arbor
20	SCB412.SB	Socket Cap Bolt M4 x 12mm Black
21	SMS2003.21	Protecting Cover
22	SMS2003.22	Grinder Lock Cap
23	SMS2003.23	Grinding Wheel
24	SMS2003.24	Base, Grinding Wheel
25	SN10.S	Steel Nut M10
26	SMS2003.26	Disc Cover
27	SMS2003.27	Screw
28	SMS2003.28	Rd Head S/T Screw M3.8 x 12mm Black
29	SMS2003.29	Eyeshield
30	NLN4.S	Nyloc Nut M4
31	SMS2003.31	Protector, Power Cord
32	SMS2003.32	Power Cord
33	SMS2003.33	Angle Guide, Left
34	SMS2003.34	Steel Bushing
35	SN8.S	Steel Nut M8
36	SMS2003.36	Motor Retainer Complete
37	SCB818.SB	Socket Cap Bolt M8 x 18mm Black
38	SMS2003.38	Rear Guiding Rod
39	SS48.S	Hex Head Set Screw M4 x 8mm
40	SMS2003.40	Guide Nut
41	SMS2003.41	Right Guiding Bushing

Item	Part No.	Description
42	GSM618.S	Grub Screw M6 x 18mm
43	NLN6.S	Nyloc Nut M6
45	SMS2003.45	Plate
46	SMS2003.46	Angle Guide, Right
48	SCB618.SB	Socket Cap Bolt M6 x 18mm Black
49	SMS2003.49	Screw
50	SMS2003.50	Steel Bushing
51	SCB625.SB	Socket Cap Bolt M6 x 25mm Black
52	SMS2003.52	Guiding Bushing, Front
53	SMS2003.53	Adjust Base
54	SMS2003.54	Screw
55	SMS2003.55	Screw
56	SMS2003.56	Pull Rod
57	SS630.S	Hex Head Set Screw M6 x 30mm
58	SMS2003.58	Guiding Bushing, Left
59	RW1030.S	Repair Washer M10 x 30mm
60	SMS2003.60	Side Handle
61	SMS2003.61	Screw
62	SMS2003.62	Handle
63	SMS2003.63	Swivel Arm
64	SMS2003.64	Mandrel, Swivel Arm
65	SMS2003.65	Threaded Oblong Block
66	SMS2003.66	Support, Saw Blade
68	SMS2003.68	Support Plate, Blade
69	SMS2003.69	Rubber Feet
70	SMS2003.70	Plate
71	SMS2003.71	Square Nuts S/C
72	SMS2003.72	Spring Ø11.4mm
73	SMS2003.73	Catch, Blade Swivel Arm
74	SMS2003.74	Base
75	SS625.S	Hex Head Set Screw M6 x 25mm
76	SMS2003.76	Mandrel Swivel Assembly (c/w Plate)
78	SMS2003.78	E-Clip ID: 6.6mm
79	SMS2003.79	Blade Stop
80	SMS2003.80	Screw
81	SMS2003.81	Pressure Bushing
82	SMS2003.82	Spring Ø16.5mm
83	SMS2003.83	Handle Grip
--	SMS2003.B	Grinding Disc Diamond Coated 100mm (Not Shown)(Please see Catalogue)

**NOTE:** It is our policy to continually improve products and as such we reserve the right to alter data, specifications and component parts without prior notice. There may be alternative versions of this product, please contact us should you require this information.

**IMPORTANT:** No liability is accepted for incorrect use of product. Spare parts must be fitted by a competent person

**WARRANTY:** Guarantee is 12 months from purchase date, proof of which will be required for any claim.

**Sealey Group**, Kempson Way, Suffolk Business Park, Bury St Edmunds, Suffolk. IP32 7AR



01284 757500



sales@sealey.co.uk



www.sealey.co.uk