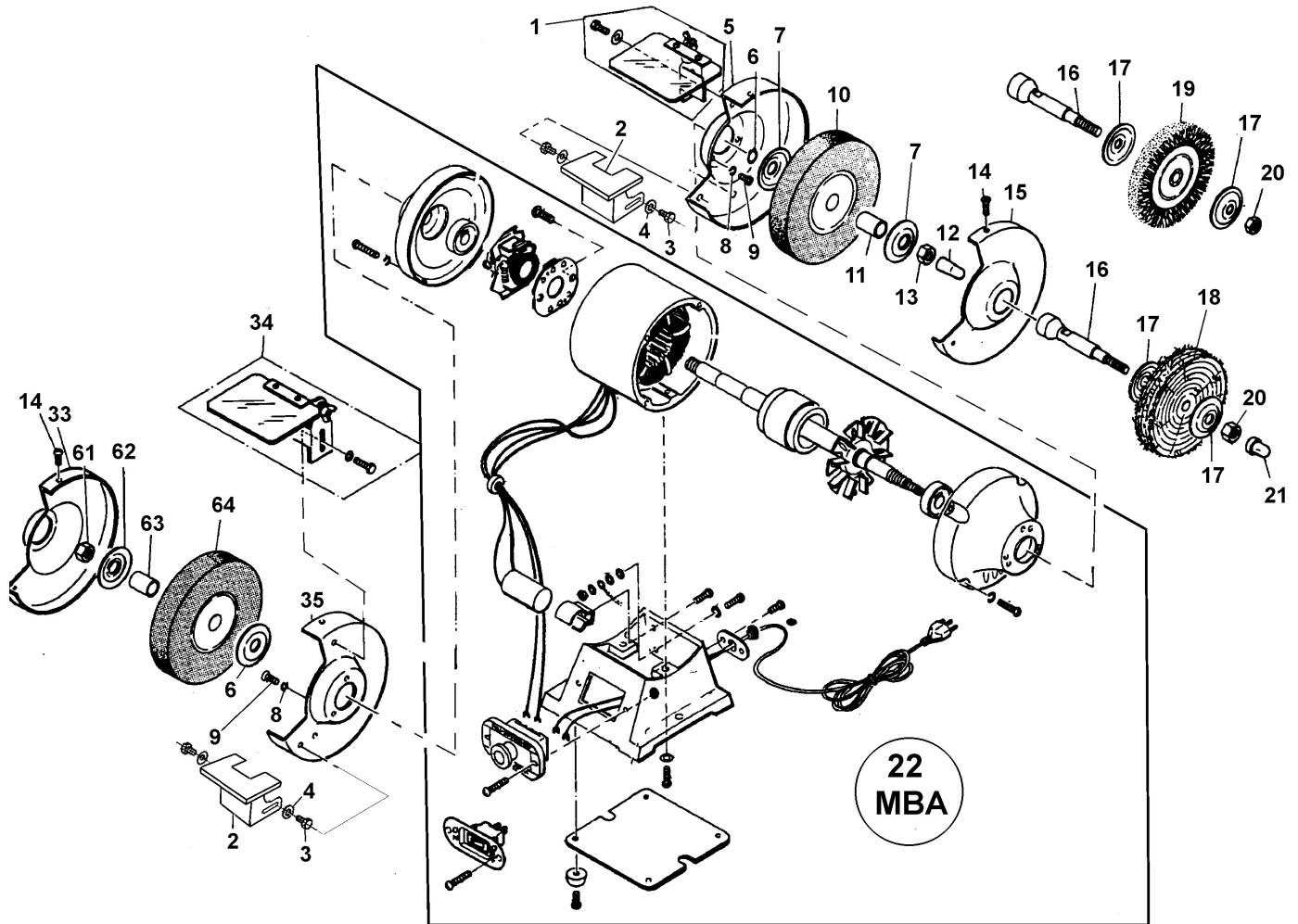


Parts Information:
**Combination Bench Grinder 200mm Wire
 Brush/Buffer 230V**
Model No: SM54.V3



Item	Part No.	Description
1	SM54A/01	Right Eye Shield
2	SM53.V3-02	Tool Rest
3	SM53.V3-03	Hex Bolt
4	SM53.V3-04	Washer
5	SM53.V3-05	Int. Cover
6	SM54A/06	Snap Ring
7	SM54A/07	Disc Washer
8	SM54A/08	Spring Washer
9	SM54A/09	Screw
10	SM54-6/GW200C	Grinding Wheel, 200x25x20
	SM54-6/GW200F	Grinding Wheel, 200x25x20
11	SM54A/11	Bush
12	SM54A/12	Rotor Shaft Cap
13	SM54A/13	Hex Nut
14	SM54A/14	Screw
15	SM53.V3-15	Wheel Cover

Item	Part No.	Description
16 & 17	SM53-56/14A	Extension Spindle C/W Washers,
18	SM54-6/BM175	Buffing Wheel
19	SM53-5/WB125	Wire Wheel 6"x5/8"x1/2"
20 & 21	SM53-56/14A	Extension Spindle C/W Washers,
--	BG150/WW1	Wire Wheel Ø150 x 13mm 13mm Bore Narrow (NOT SHOWN)
22	SM54A/MBA	Motor Assembly (mba)
33	SM54A/33	Left Wheel Cover
34	SM54A/34	Left Eye Shield
35	SM54.V3-35	Left Cover 200dia
61	SM54A/61	Hex Nut, Left Thread
62	SM54A/62	Disc Washer
63	SM54A/63	Bush
64	SM54-6/GW200C	Grinding Wheel, 200x25x20
	SM54-6/GW200F	Grinding Wheel, 200x25x20

NOTE: It is our policy to continually improve products and as such we reserve the right to alter data, specifications and component parts without prior notice.

IMPORTANT: No liability is accepted for incorrect use of product.

WARRANTY: Guarantee is 12 months from purchase date, proof of which will be required for any claim.