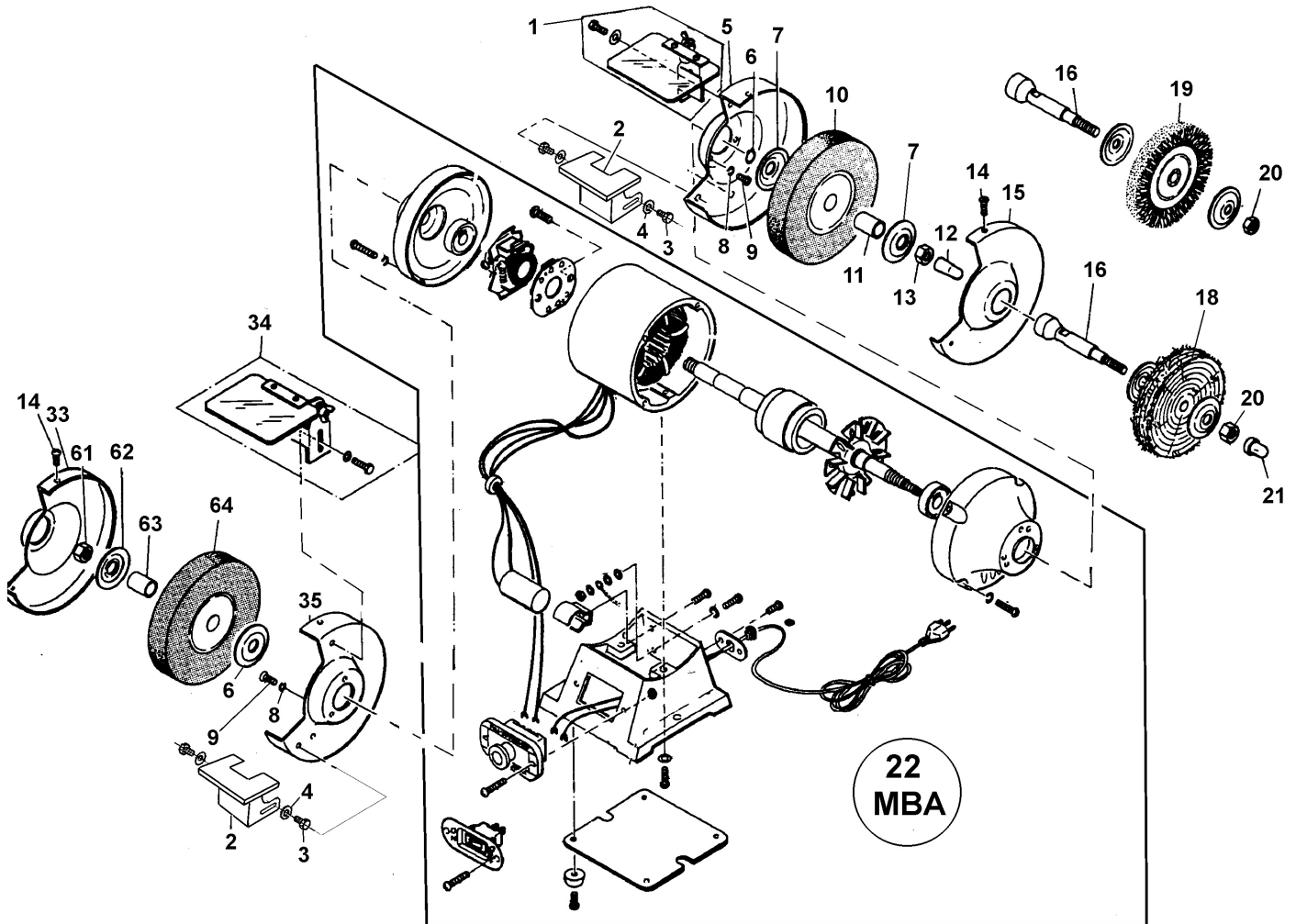


Parts Information:
**Combination Bench Grinder 150mm Wire
 Brush/Buffer 230V
 Model No: SM53.V3**



Item	Part No.	Description
1	SM53A/01	Right Eye Shield
2	SM53.V3-02	Tool Rest
3	SM53.V3-03	Hex Bolt
4	SM53.V3-04	Washer
5	SM53.V3-05	Int. Cover
6	SM53A/06	Snap Ring
7	SM53A/07	Disc Washer
8	SM53A/08	Spring Washer
9	SM53A/09	Screw
10	SM53-5/GW150C	Dry Grind Stone 6"x1"x13/16" Coarse Grit (a36q)
	SM53-5/GW150F	Dry Grind Stone 6"x1"x13/16" Fine Grit (a60p)
11	SM53A/11	Bush
12	SM53A/12	Rotor Shaft Cap
13	SN16.S	Steel Nut M16 Zinc Din934(Single)
14	SM53A/14	Screw
15	SM53.V3-15	Wheel Cover

Item	Part No.	Description
16	SM53-56/14A	Extension Spindle C/W Washers (+ Items 20 & 21)
18	SM53-5/BM125	Buffing Wheel 6"x3/4"x1/2"
19	SM53-5/WB125	Wire Wheel 6"x5/8"x1/2"
20 & 21	SM53-56/14A	Hex Nut & Adaptor Cap (See Item 16)
--	BG150/WW1	Wire Wheel Ø150 x 13mm 13mm Bore Narrow (NOT SHOWN)
22	SM53A/22	Motor Assembly (mba) sm53a/mba
33	SM53A/33	Left Wheel Cover
34	SM53A/34	Left Eye Shield
35	SM53.V3-35	Left Cover
61	SM53A/61	Hex Nut, Left Thread
62	SM53A/62	Disc Washer
63	SM53A/63	Bush
64	SM53-5/GW150C	Dry Grind Stone 6"x1"x13/16" Coarse Grit (a36q)
	SM53-5/GW150F	Dry Grind Stone 6"x1"x13/16" Fine Grit (a60p)

NOTE: It is our policy to continually improve products and as such we reserve the right to alter data, specifications and component parts without prior notice.

IMPORTANT: No liability is accepted for incorrect use of product.

WARRANTY: Guarantee is 12 months from purchase date, proof of which will be required for any claim.