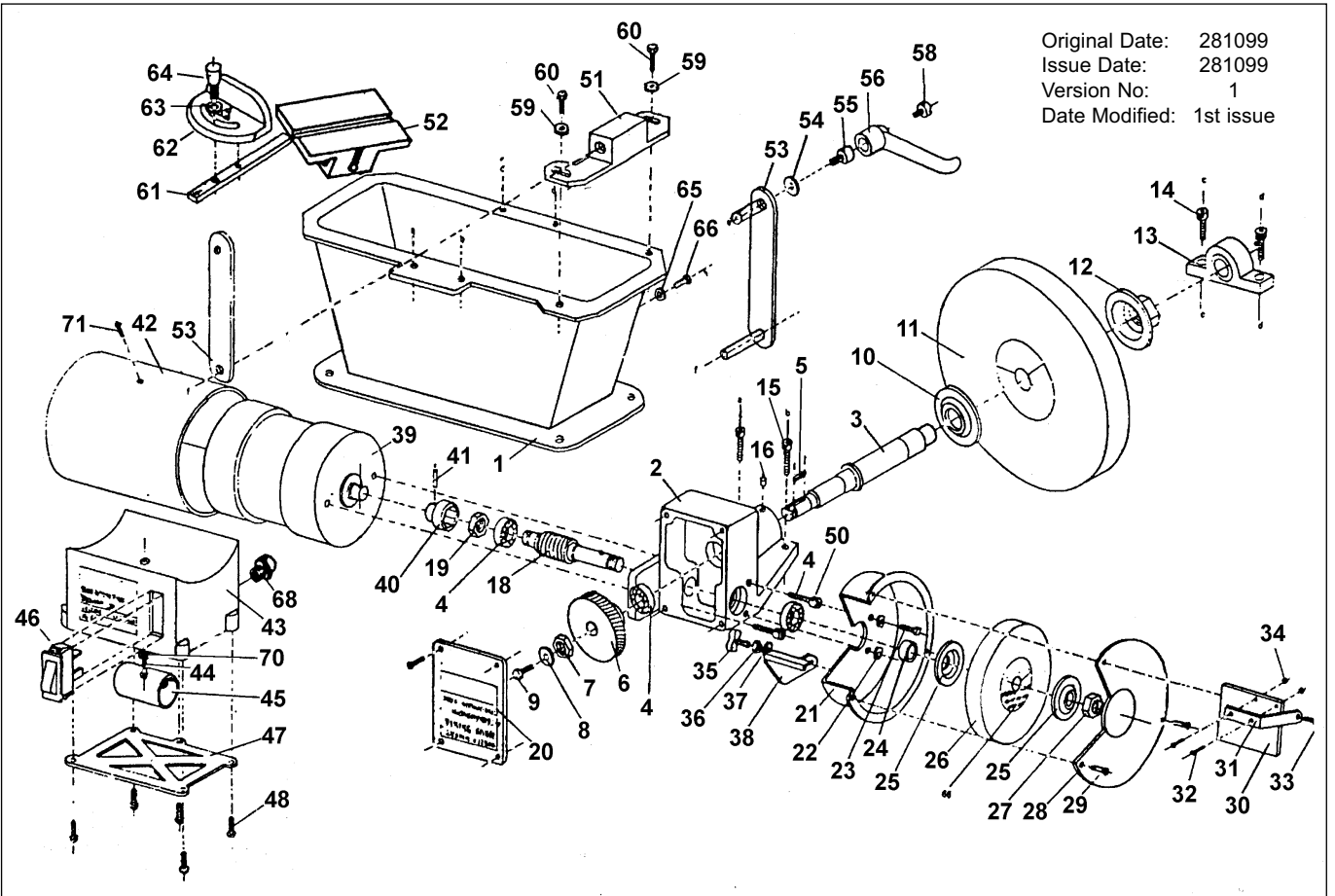


Original Date: 281099
 Issue Date: 281099
 Version No: 1
 Date Modified: 1st issue



| Item | Part No. | Description | Item | Part No. | Description | Item | Part No. | Description |
|------|-------------|---------------------|------|------------|-----------------------|------|----------|------------------|
| 1 | SM52/01 | Base | 25 | SM52/25 | Flange | 48 | SM52/48 | Screw |
| 2 | SM52/02 | Gear Box | 26 | SM52/GW125 | Grinding Wheel | 50 | SM52/50 | Cap Screw |
| 3 | SM52/03 | Spindle | 27 | SM52/27 | Hex. Nut | 51 | SM52/51 | Table Bracket |
| 4 | SM52/04 | Bearing | 28 | SM52/28 | Wheel Cove | 52 | SM52/52 | Tool Rest Table |
| 5 | SM52/05 | Pin Key | 29 | SM52/29 | Cross Head Screw | 53 | SM52/53 | Support Bracket |
| 6 | SM52/06 | Worm Gear | 30 | SM52/30 | Eyeshield | 54 | SM52/54 | Washer |
| 7 | SM52/07 | Hex. Nut | 31 | SM52/31 | Frame, Eyeshield | 55 | SM52/55 | Cap Screw |
| 8 | SM52/08 | Washer | 32 | SM52/32 | Cross Head Screw | 56 | SM52/56 | Adjusting Handle |
| 9 | SM52/09 | Hex. Bolt | 33 | SM52/33 | Knob Stud | 58 | SM52/58 | Cap Screw |
| 10 | SM52/10 | Flange | 34 | SM52/34 | Hex. Nut | 59 | SM52/59 | Washer |
| 11 | SM52/GW250W | Grinding Wheel, 10" | 35 | SM52/35 | Wing Nut | 60 | SM52/60 | Hex. Bolt |
| 12 | SM52/12 | Flange | 36 | SM52/36 | Hex. Nut | 61 | SM52/61 | Mitre Bar |
| 13 | SM52/13 | Guide Clamp | 37 | SM52/37 | Washer | 62 | SM52/62 | Mitre Gauge Body |
| 14 | SM52/14 | Cap Screw | 38 | SM52/38 | Tool Rest, Adjustable | 63 | SM52/63 | Washer |
| 15 | SM52/15 | Cap Screw | 39 | SM52/39 | Motor | 64 | SM52/64 | Hex. Bolt |
| 16 | SM52/16 | Oil Feeder | 40 | SM52/40 | Hex. Coupler | 65 | SM52/65 | Oil Seal |
| 18 | SM52/18 | Worm Shaft | 41 | SM52/41 | Pin | 66 | SM52/66 | Screw |
| 19 | SM52/19 | Hex. Nut | 42 | SM52/42 | Cover, Motor | 67 | SM52/67 | Motor Plate |
| 20 | SM52/20 | Cover, Gear Box | 43 | SM52/43 | Switch Box | 68 | SM52/68 | Cable Gland |
| 21 | SM52/21 | Wheel Guard | 44 | SM52/44 | Cross Head Screw | 70 | SM52/70 | Washer |
| 22 | SM52/22 | Washer | 45 | C/5-350 | Capacitor | 71 | SM52/71 | Cross Head Screw |
| 23 | SM52/23 | Hex. Bolt | 46 | SM52/46 | Switch | | | |
| 24 | SM52/24 | Spacer | 47 | SM52/47 | Cover, Switch Box | | | |