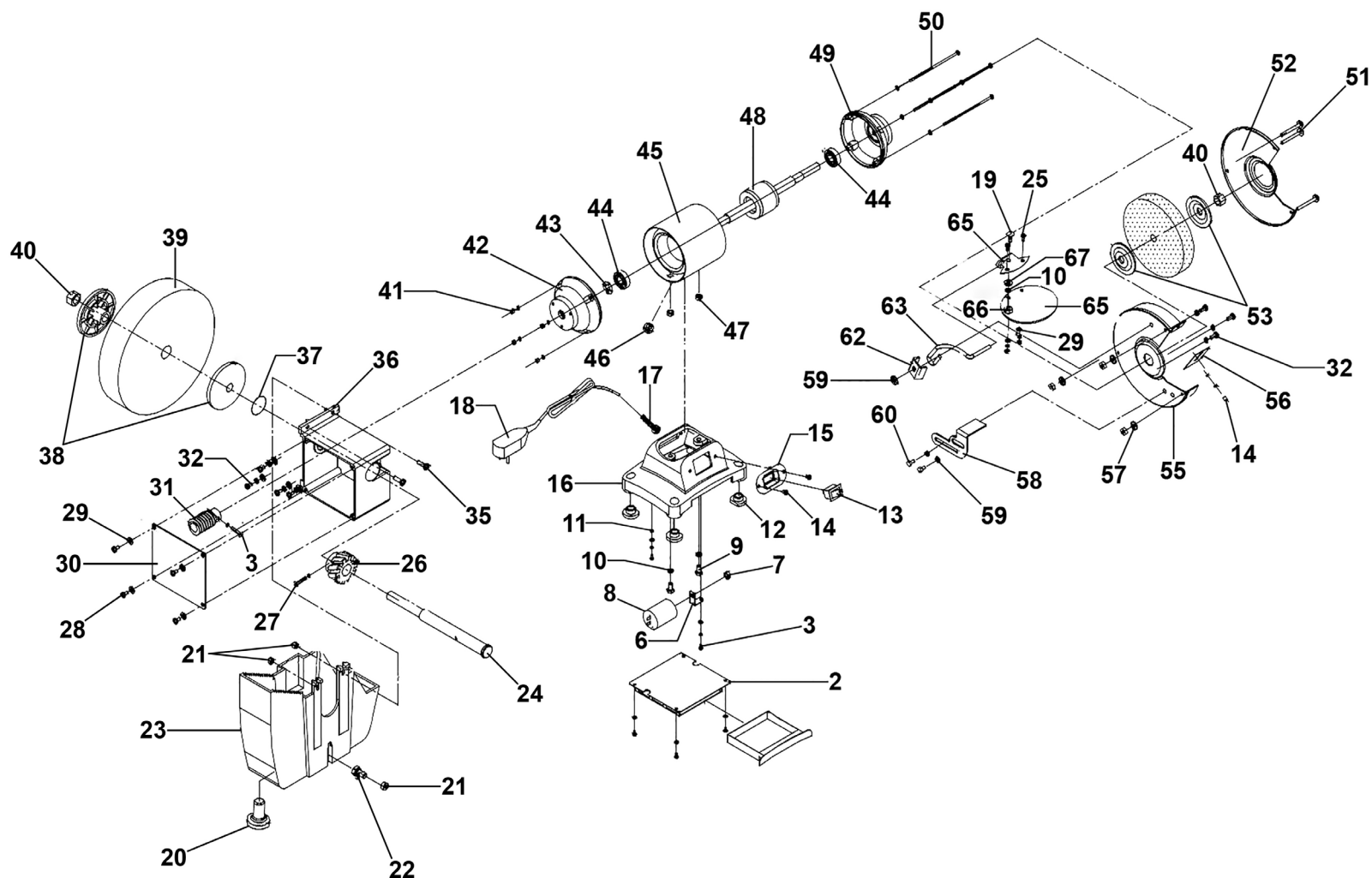


## Parts Information: 200/150mm Wet & Dry Bench Grinder 250W/230V Model No: SM521



**NOTE:** It is our policy to continually improve products and as such we reserve the right to alter data, specifications and component parts without prior notice.

There may be alternative versions of this product, please contact us should you require this information.

**IMPORTANT:** No liability is accepted for incorrect use of product. Spare parts must be fitted by a competent person

**WARRANTY:** Guarantee is 12 months from purchase date, proof of which will be required for any claim.

Sealey Group, Kempson Way, Suffolk Business Park, Bury St Edmunds, Suffolk. IP32 7AR



01284 757500



sales@sealey.co.uk



www.sealey.co.uk



Parts Information:  
**200/150mm Wet & Dry Bench Grinder**  
**250W/230V**  
**Model No: SM521**

Item	Part No.	Description
2	SM521.02	Base Plate Assembly
3	SM521.03	Philips Screw M4 x 8mm (c/w Spring Washer & Washer)
6	SM521.06	Capacitor Support
7	SN8.S	Steel Nut M8
8	SM521.08	Capacitor 4µF 450V
9	MSP618.S	Machine Screw Pan Head Phillips M6 x 18mm
10	SWM6.S	Spring Washer M6
11	BB2002.15	M4 ext Tooth Washer Black
12	SM521.12	Rubber Foot
13	SM521.13	Switch, On/Off Rocker 16A 250V (c/w Cover)
14	MSP58.SB	Machine Screw Pan Head Phillips M5 x 8mm Black
15	SM521.15	Fixing Plate, Switch
16	SM521.16	Base
17	SM521.17	Cord Clip
18	SM521.18	Plug & Cord
19	CBN618.SB	Coach Bolt M6 x 18mm Black
20	SM521.20	Water Stop
21	SN5.S	Steel Nut M5
22	SS525.S	Hex Head Set Screw M5 x 25mm
23	SM521.23	Wheel Guard for Wet Stone
24	SM521.24	Worm Shaft
25	MSP410.SB	Machine Screw Pan Head Phillips M4 x 10mm Black
26	SM521.26	Worm Gear
27	MSP420.S	Machine Screw Pan Head Phillips M4 x 20mm
28	MSP48.SB	Machine Screw Pan Head Phillips M4 x 8mm Black
29	SM521.29	Flat Washer 4mm
30	SM521.30	Gear Box Cover
31	SM521.31	Gear
32	SM521.32	Philips Screw 5mm (c/w Spring Washer & Washer)
35	MSP516.SB	Machine Screw Pan Head Phillips M5 x 16mm Black

Item	Part No.	Description
36	SM521.36	Gear Box
37	SM35CE.V4-098	External Circlip ID:15.8mm
38	SM521.38	Flange
39	SM521GW200W	Wet Stone Wheel (Ø200 x 40mm x Ø20mm) <b>(Please see Catalogue)</b>
40	SM521.40	Hex Nut M12
41	SN4.S	Steel Nut M4
42	SM521.42	Motor Cover, Left
43	SM521.43	Wave Spring Washer
44	B/6202-2RS	Bearing 6202-2RS
45	SM521.45	Stator
46	SM521.46	Wire Bushing
47	SM521.47	Special Lock Nut M6
48	SM521.48	Rotor
49	SM521.49	Motor Cover, Right
50	SM521.50	Philips Screw M4 x 135mm
51	MSP545.SB	Machine Screw Pan Head Phillips M5 x 45mm Black
52	SM521.52	Wheel Guard Cover, Right
53	SM521.53	Flange
55	SM521.55	Wheel Guard, Right
56	SM521.56	Deflector
57	SM521.57	Lock Washer 5mm
58	SM521.58	Tool Rest, Right
59	SM521.59	Flat Washer 8mm
60	SM521.60	Hex Bolt M8 x 10mm
62	SM521.62	Bracket
63	SM521.63	Mount Rod, Eyeshield
65	BG150WL.30	Eyeshield, Oval (110 x 90 x 2mm)
66	SN6.S	Steel Nut M6
67	SM521.67	Flat Washer 6mm
68	SM521.68	Eyeshield Bracket
--	SM521.61	Hex Bolt M8 x 14mm (Not Shown)

**NOTE:** It is our policy to continually improve products and as such we reserve the right to alter data, specifications and component parts without prior notice. There may be alternative versions of this product, please contact us should you require this information.

**IMPORTANT:** No liability is accepted for incorrect use of product. Spare parts must be fitted by a competent person

**WARRANTY:** Guarantee is 12 months from purchase date, proof of which will be required for any claim.

**Sealey Group**, Kempson Way, Suffolk Business Park, Bury St Edmunds, Suffolk. IP32 7AR



01284 757500



sales@sealey.co.uk



www.sealey.co.uk