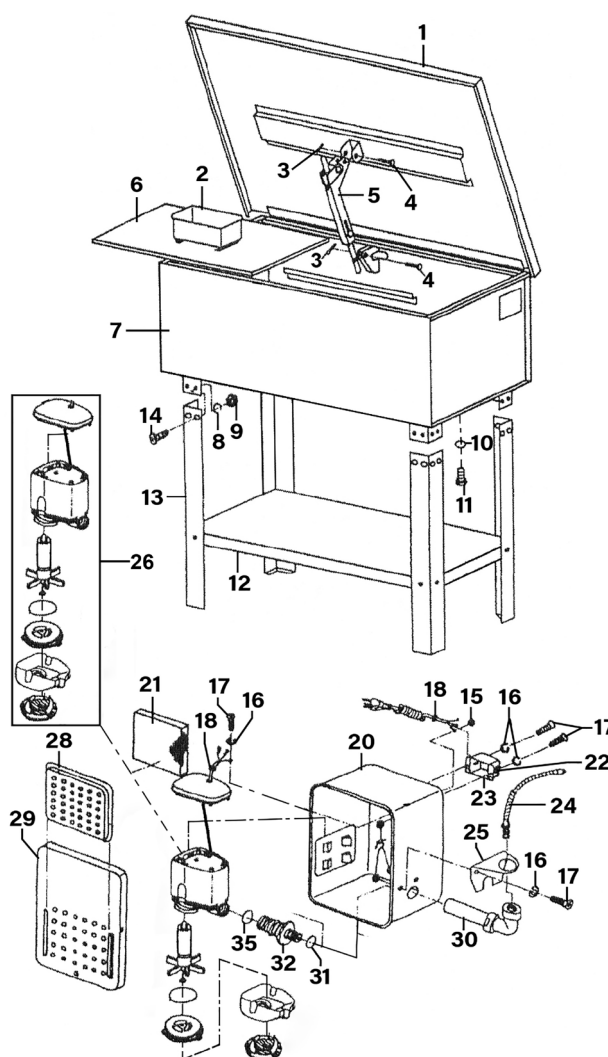


Parts Information: Parts Washer 80L Model No: SM40.V2



Item	Part No.	Description
1	SM40.V2-01	Cover, Lid (c/w Hinge Shaft)
2	SM40.V2-02	Basket
3	SM40.V2-03	Cotter Pin 1.4 x 10mm
4	SM40.V2-04	Pin
5	SM40.V2-05	Safety Plate
6	SM40.V2-06	Work Shelf
7	SM40.V2-07	Body, Main Cabinet
8	SWM8.S	Spring Washer M8
9	SN6.S	Steel Nut M6
10	SM40.V2-10	O-Ring (18.34 x 12.04 x 3.15mm)
11	SM40.V2-11	Oil Drain Plug
12	SM40.V2-12	Shelf
13	SM40.V2-13	Leg
14	MSP612.S	18+A2
15	SN4.S	Steel Nut M4
16	SWM4.SB	Spring Washer M4 Black

Item	Part No.	Description
17	MSP410.S	Machine Screw Pan Head Phillips M4 x 10mm
18	SM40.V2-18	Strain Relief
20	SM40.V2-20	Pump Housing
21	SM40D.V2-09	Filter
22	SM40D.V2-21	Switch, On/Off Rocker 16A 250V
23	SM40D.V2-22	Switch Housing
24	SM40D.V2-18	Flexible Pipe
25	SM40.V2-25	Elbow Seat
26	SM21.V4-06	Pump
28	SM40D.V2-08	Filter Cover
29	SM40.V2-29	Cover, Pump Housing
30	SM40.V2-30	Elbow
31	SM40.V2-31	O-Ring (15.14 x 9.90 x 2.62mm)
32	SM40.V2-32	Spigot
35	SM40.V2-35	O-Ring (20.73 x 17.17 x 1.78mm)

NOTE: It is our policy to continually improve products and as such we reserve the right to alter data, specifications and component parts without prior notice. There may be alternative versions of this product, please contact us should you require this information.

IMPORTANT: No liability is accepted for incorrect use of product. Spare parts must be fitted by a competent person

WARRANTY: Guarantee is 12 months from purchase date, proof of which will be required for any claim.

Jack Sealey Ltd t/a Sealey Group, Kempson Way, Suffolk Business Park, Bury St Edmunds, Suffolk, IP32 7AR UK

Jack Sealey (EU) Ltd t/a Sealey Group, Farney Street, Carrickmacross, Co. Monaghan, A81 PK68 Ireland

Tel: 01284 757500 • Email: sales@sealey.co.uk • Web: www.sealey.co.uk