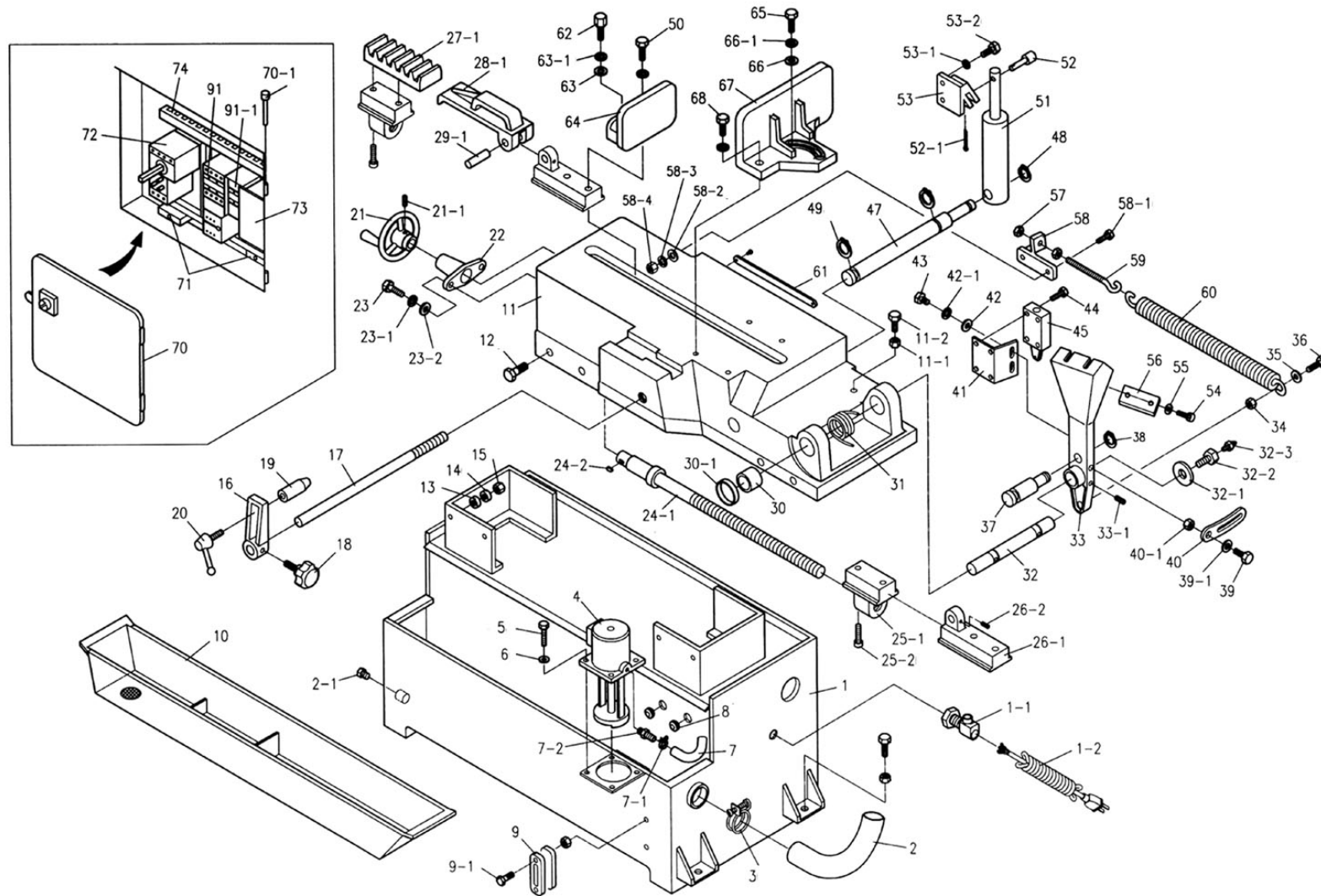




# Parts Information: Bandsaw 400mm Horizontal Hydraulic Arm Model No: SM353CE.V2



**NOTE:** It is our policy to continually improve products and as such we reserve the right to alter data, specifications and component parts without prior notice.

**IMPORTANT:** No liability is accepted for incorrect use of product.

**WARRANTY:** Guarantee is 12 months from purchase date, proof of which will be required for any claim.

Sealey Group, Kempson Way, Suffolk Business Park, Bury St Edmunds, Suffolk. IP32 7AR



01284 757500



01284 703534



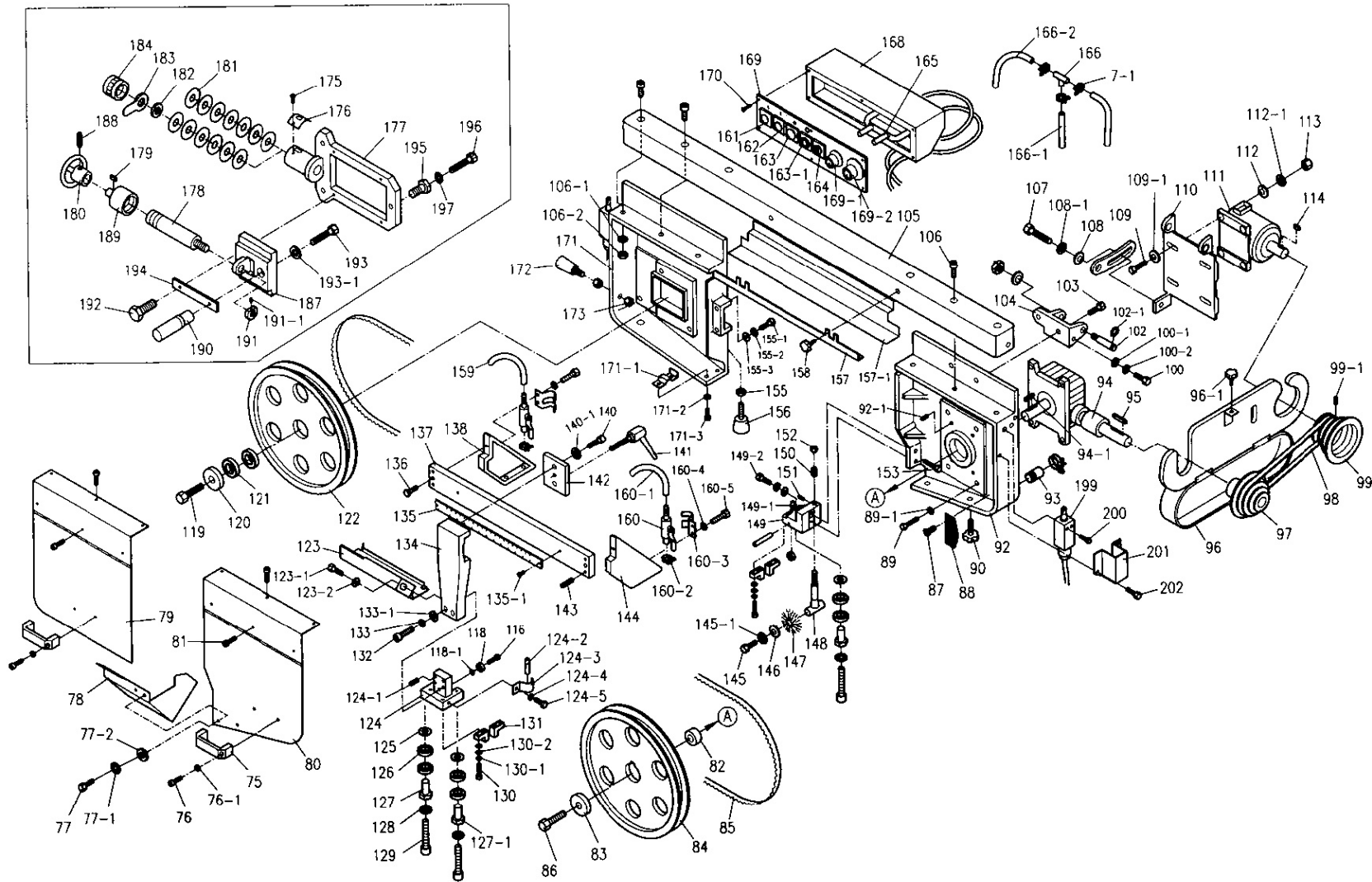
sales@sealey.co.uk



www.sealey.co.uk



# Parts Information: Bandsaw 400mm Horizontal Hydraulic Arm Model No: SM353CE.V2



**NOTE:** It is our policy to continually improve products and as such we reserve the right to alter data, specifications and component parts without prior notice.

**IMPORTANT:** No liability is accepted for incorrect use of product.

**WARRANTY:** Guarantee is 12 months from purchase date, proof of which will be required for any claim.

Sealey Group, Kempson Way, Suffolk Business Park, Bury St Edmunds, Suffolk. IP32 7AR



01284 757500



01284 703534



sales@sealey.co.uk



www.sealey.co.uk



Parts Information:  
**Bandsaw 400mm Horizontal Hydraulic  
 Arm**  
**Model No: SM353CE.V2**

Item	Part No.	Description	Item	Part No.	Description
1	SM353CEV2.001	BASE	30	SM353CEV2.030	BEARING SLEEVE
1-1	SM353CEV2001A	STRAIN RELIEF FITTING	30-1	SM353CEV2030A	BUSHING
1-2	SM353CEV2001B	POWER CORD	31	SM353CEV2.031	TORSION SPRING
--	SM353CEV2001C	HEX CAP BOLT M12x65 (NOT SHOWN)	32	SM353CEV2.032	PIVOT SHAFT
2	SM353CEV2.002	HOSE 30mm x35mm x 520mm	32-1	SM353CEV2032A	WASHER
2-1	SM353CEV2002A	DRAIN PLUG 3/8"PT	32-2	SM353CEV2032B	HEX CAP SCREW M12x20
3	SM353CEV2.003	HOSE CLAMP 35mm	32-3	SM353CEV2032C	GREASE CUP 1/16"
4	SM353CEV2.004	COOLANT PUMP	33	SM353CEV2.033	PIVOT BRACKET
5	SM353CEV2.005	ROUND HEAD SCREW M6x16	33-1	SM353CEV2033A	SET SCREW M10x12
6	SM353CEV2.006	LOCK WASHER M6	34	SN12.S	STEEL NUT M12 ZINC DIN934(SINGLE)
7	SM353CEV2.007	HOSE 8mm x 1300mm	35	SM353CEV2.035	WASHER M12
7-1	SM353CEV2007A	HOSE CLAMP 14mm	36	SM353CEV2.036	HEX CAP BOLT M12x40
7-2	SM353CEV2007B	HOSE FITTING 3/8"PTx5/16"H	37	SM353CEV2.037	TORSION SPRING SHAFT
8	SM353CEV2.008	STRAIN RELIEF	38	SM353CEV2.038	C-RING S-22
9	SM353CEV2.009	COOLANT GAUGE	39	SM353CEV2.039	HEX CAP BOLT M8x30
9-1	SM353CEV2009A	HEX CAP BOLT M10x30	39-1	SM353CEV2039A	WASHER M8
10	SM353CEV2.010	CHIP TRAY	40	SM353CEV2.040	MOTOR TILT PLATE
11	SM353CEV2.011	BED	40-1	SN8.S	STEEL NUT M8 ZINC DIN934 (SINGLE)
11-1	SN10.S	STEEL NUT M10 ZINC DIN934(SINGLE)	41	SM353CEV2.041	LIMIT SWITCH PLATE
11-2	SM353CEV2011B	BOLT M10X30	42	SM353CEV2.042	WASHER M8
12	SM353CEV2.012	HEX CAP BOLT M8x30	42-1	SM353CEV2042A	LOCK WASHER M8
13	SM353CEV2.013	WASHER M8	43	SM353CEV2.043	HEX CAP BOLT M8x20
14	SM353CEV2.014	LOCK WASHER M8	44	SM353CEV2.044	HEX CAP BOLT M6x12
15	SN8.S	STEEL NUT M8 ZINC DIN934 (SINGLE)	45	SM353CEV2.045	LIMIT SWITCH
16	SM353CEV2.016	WORK STOP BRACKET	47	SM353CEV2.047	CYLINDER PIN
17	SM353CEV2.017	WORK STOP ROD	48	SM353CEV2.048	C-RING S-20
18	SM353CEV2.018	LOCK KNOB 3/8"x1 1/4"	49	SM353CEV2.049	C-RING S-25
19	SM353CEV2.019	WORK STOP	50	SM353CEV2.050	HEX CAP BOLT M12x40
20	SM353CEV2.020	LOCK HANDLE	51	SM353CEV2.051	HYDRAULIC CYLINDER ASSEMBLY
21	SM353CEV2.021	HAND WHEEL ASSEMBLY 5.5"	52	SM353CEV2.052	CYLINDER PIN - TOP
21-1	SM353CEV2021A	SET SCREW 5/16"x3/8"	52-1	SM353CEV2052A	PIN
22	SM353CEV2.022	LEAD SCREW SEAT	53	SM353CEV2.053	HYDRAULIC MOUNTING PLATE - TOP
23	SM353CEV2.023	HEX CAP BOLT 5/16"x3/8"	53-1	SM353CEV2053A	LOCK WASHER M10
23-1	SM353CEV2023A	LOCK WASHER M8	53-2	SM353CEV2053B	HEX CAP BOLT M10x30
23-2	SM353CEV2023B	WASHER M8	54	SM353CEV2.054	HEX CAP BOLT M12x50
24-1	SM353CEV2024A	LEAD SCREW, NEW TYPE, 665MM LONG	55	SM353CEV2.055	WASHER M12
24-2	SM353CEV2024B	KEY 5x20	56	SM353CEV2.056	LOCK PLATE
25-1	SM353CEV2025A	LEAD SCREW BRACKET	57	SM353CEV2.057	NUT 1/2"
25-2	SM353CEV2025B	HEX SOCKET CAP SCREW M8x25	58	SM353CEV2.058	SPRING BRACKET
26-1	SM353CEV2026A	SLIDE BRACKET	58-1	SM353CEV2058A	HEX CAP BOLT M8x30
26-2	SM353CEV2026B	SET SCREW M6x8	58-2	SM353CEV2058B	WASHER M8
27-1	SM353CEV2027A	RACK	58-3	SM353CEV2058C	LOCK WASHER M8
28-1	SM353CEV2028A	RACK BLOCK	58-4	SN8.S	STEEL NUT M8 ZINC DIN934 (SINGLE)
29-1	SM353CEV2029A	PIN	59	SM353CEV2.059	SPRING ADJUSTABLE ROD 1/2"

**NOTE:** It is our policy to continually improve products and as such we reserve the right to alter data, specifications and component parts without prior notice.

**IMPORTANT:** No liability is accepted for incorrect use of product.

**WARRANTY:** Guarantee is 12 months from purchase date, proof of which will be required for any claim.

**Sealey Group**, Kempson Way, Suffolk Business Park, Bury St Edmunds, Suffolk. IP32 7AR



01284 757500



01284 703534



sales@sealey.co.uk



www.sealey.co.uk



Parts Information:  
**Bandsaw 400mm Horizontal Hydraulic Arm**  
**Model No: SM353CE.V2**

Item	Part No.	Description
60	SM353CEV2.060	SPRING
61	SM353CEV2.061	ANGLE SCALE
--	SM353CEV2061A	RIVET (NOT SHOWN)
62	SM353CEV2.062	HEX HEAD BOLT M12x40
63	SM353CEV2.063	WASHER M12 THICK BLACK
63-1	SM353CEV2063A	LOCK WASHER M12
64	SM353CEV2.064	VICE JAW - LEFT
65	SS1250.SB	HEX HEAD SET SCREW M12x50mm SINGLE BLACK
66	SM353CEV2.066	WASHER M12
66-1	SM353CEV2066A	LOCK WASHER M12
67	SM353CEV2.067	VICE JAW - RIGHT
68	SS1240.S	HEX HEAD SET SCREW M12x40mm SINGLE
70	SM353CEV2.070	ELECTRICAL PANEL COVER
70-1	SM353CEV2070A	PIN
71	SM353CEV2.071	FUSE 5.8x2.5 fu03(3a), fu01(2a), fu2(2a)
72	SM353CEV2.072	GENERAL SWITCH
73	SM353CEV2.073	TRANSFORMER
74	SM353CEV2.074	TERMINAL STRIP
75	SM353CEV2.075	HANDLE
76	SM353CEV2.076	ROUND HEAD SCREW M6X12
76-1	SM353CEV2076A	WASHER M6
77	SM353CEV2.077	HEX CAP BOLT M6X10
77-1	SM353CEV2077A	LOCK WASHER M6
77-2	SM353CEV2077B	WASHER M6
78	SM353CEV2.078	WIRE BRUSH GUARD
79	SM353CEV2.079	BLADE WHEEL COVER - LEFT
80	SM353CEV2.080	BLADE WHEEL COVER - RIGHT
81	SM353CEV2.081	HEX SOCKET CAP SCREW M6X8
82	SM353CEV2.082	BUSHING
83	SM353CEV2.083	WASHER
84	SM353CEV2.084	DRIVE WHEEL
85	SM353CEV2.085	BLADE 3035MM
86	SM353CEV2.086	HEX CAP BOLT M12X20
87	SM353CEV2.087	ROUND HEAD SCREW M5X10
88	SM353CEV2.088	FILTER SCREEN
89	SM353CEV2.089	HEX CAP BOLT M12X35
89-1	SM353CEV2089A	LOCK WASHER M12
90	SM353CEV2.090	LOCK KNOB 1/4"X10
91	SM353CEV2.091	OVERLOAD SWITCH
91-1	SM353CEV2091A	MAGNETIC SWITCH
92	SM353CEV2.092	BLADE WHEEL BOX - RIGHT
92-1	SM353CEV2092A	SET SCREW M10X12
93	SM353CEV2.093	CONNECTOR

Item	Part No.	Description
94	SM353CEV2.094	GEAR BOX ASSEMBLY
94-1	SM353CEV2094A	KEY 7MM
95	SM353CEV2.095	KEY 7MM
96	SM353CEV2.096	PULLEY COVER
96-1	SM353CEV2096A	LOCK KNOB 1/4"
97	SM353CEV2.097	GEAR BOX PULLEY
98	V/A39	V-BELT (ID-1000) A39
99	SM353CEV2.099	MOTOR PULLEY
99-1	SM353CEV2099A	SET SCREW M8X10
100	SM353CEV2.100	HEX CAP BOLT M8X16
100-1	SM353CEV2100A	WASHER M8
100-2	SM353CEV2100B	LOCK WASHER M8
102	SM353CEV2.102	SUPPORT SHAFT
102-1	SM353CEV2102A	C-RING S-19
103	SM353CEV2.103	HEX CAP BOLT M12X35
104	SM353CEV2.104	MOTOR MOUNT BRACKET
--	SM353CEV2104B	NUT 1/2" (NOT SHOWN)
105	SM353CEV2.105	COLUMN
106	SM353CEV2.106	HEX. SOCKET CAP SCREW M12X20
106-1	SM353CEV2106A	LOCK WASHER M12
106-2	SM353CEV2106B	NUT M12
107	SM353CEV2.107	HEX. CAP BOLT M8X25
108	SM353CEV2.108	WASHER M8
108-1	SM353CEV2108A	LOCK WASHER M8
109	SM353CEV2.109	HEX. CAP BOLT M8X45
109-1	SM353CEV2109A	WASHER M8
110	SM353CEV2.110	MOTOR MOUNT PLATE
111	SM353CEV2.111	MOTOR INCLUDES PART:SM353CEV2.114 KEY
112	SM353CEV2.112	WASHER M8
112-1	SM353CEV2112A	LOCK WASHER M8
113	SN8.S	STEEL NUT M8 ZINC DIN934 (SINGLE)
114	SM353CEV2.114	KEY 7MM
116	SM353CEV2.116	HEX. SOCKET CAP SCREW M8X20
118	B/608ZZ	BEARING 608ZZ
118-1	SM353CEV2118A	LOCK WASHER M8
119	SM353CEV2.119	HEX. CAP BOLT M12X35
120	SM353CEV2.120	WASHER M12
121	B/6205Z	BEARING 6205Z
122	SM353CEV2.122	IDLER WHEEL
123	SM353CEV2.123	BLADE GUARD
123-1	SM353CEV2123A	HEX. CAP BOLT M8X16
123-2	SM353CEV2123B	WASHER M8
124	SM353CEV2.124	GUIDE BRACKET-LEFT

**NOTE:** It is our policy to continually improve products and as such we reserve the right to alter data, specifications and component parts without prior notice.

**IMPORTANT:** No liability is accepted for incorrect use of product.

**WARRANTY:** Guarantee is 12 months from purchase date, proof of which will be required for any claim.

**Sealey Group**, Kempson Way, Suffolk Business Park, Bury St Edmunds, Suffolk. IP32 7AR



01284 757500



01284 703534



sales@sealey.co.uk



www.sealey.co.uk





Parts Information:  
**Bandsaw 400mm Horizontal Hydraulic  
 Arm**  
**Model No: SM353CE.V2**

Item	Part No.	Description	Item	Part No.	Description
124-1	GSM816.S	GRUB SCREW M8x16 (SINGLE)	155-1	SM353CEV2155A	HEX. CAP BOLT M12x30
124-2	SM353CEV2124B	NOZZLE	155-2	SM353CEV2155B	LOCK WASHER M12
124-3	SM353CEV2124C	NOZZLE SUPPORT	155-3	SM353CEV2155C	WASHER M12
124-4	SM353CEV2124D	LOCK WASHER M6	156	SM353CEV2.156	STAND BOLT M12x50
124-5	SM353CEV2124E	HEX. CAP BOLT M6x12	157	SM353CEV2.157	BLADE GUARD
125	SM353CEV2.125	WASHER M8x25	157-1	SM353CEV2157A	BLADE GUARD-DOWN
126	B/6201ZZ	BEARING 6201ZZ	158	SM353CEV2.158	LOCK KNOB 1/4x10
127	SM353CEV2.127	CENTRIC SLEEVE	159	SM353CEV2.159	HOSE 6mm x 8.5mm x 700mm
127-1	SM353CEV2127A	ECCENTRIC SLEEVE	160	SM353CEV2.160	ADJUSTING VALVE
128	SM353CEV2.128	LOCK WASHER M8	160-1	SM353CEV2160A	HOSE 11mm x 13mm x 350mm
129	SCB845.SB	SOCKET HEAD CAP SCREW M8x45 BLACK	160-2	SM353CEV2160B	HOSE CLAMP 14mm
130	SM353CEV2.130	HEX. SOCKET CAP SCREW M6x30	160-3	SM353CEV2160C	BRACE
130-1	SM353CEV2130A	LOCK WASHER	160-4	SM353CEV2160D	LOCK WASHER M6
130-2	SM353CEV2130B	WASHER	160-5	SM353CEV2160E	HEX. CAP BOLT M6x12
131	SM353CEV2.131	TUNGSTEN CARBIDE BLADE GUIDE	161	SM353CEV2.161	POWER INDICATOR LIGHT, 30V
132	SM353CEV2.132	HEX. CAP BOLT M8x40	162	SM353CEV2.162	START SWITCH
133	SM353CEV2.133	LOCK WASHER M8	163	SM353CEV2.163	STOP SWITCH
133-1	SM353CEV2133A	WASHER M8	163-1	SM353CEV2163A	EMERGENCY STOP SWITCH
134	SM353CEV2.134	ADJUSTABLE BRACKET	164	SM353CEV2.164	PUMP SWITCH
135	SM353CEV2.135	SCALE	165	SM353CEV2.165	SPEED CONTROL VALVE
135-1	SM353CEV2135A	ROUND HEAD SCREW	166	SM353CEV2.166	CONNECTION TUBE
136	SM353CEV2.136	HEX. SOCKET CAP SCREW M10x25	166-1	SM353CEV2166A	HOSE 11mm x 14mm x 400mm
137	SM353CEV2.137	SLIDE	166-2	SM353CEV2166B	HOSE 11mm x 14mm x 950mm
--	SM353CEV2137A	SLIDE (c/w SCALE) (NOT SHOWN)	168	SM353CEV2.168	CONTROL BOX
138	SM353CEV2.138	BLADE BRACKET-LEFT	169	SM353CEV2.169	CONTROL PANEL
140	SM353CEV2.140	HEX. CAP BOLT M8x25	169-1	SM353CEV2169A	OIL REGULATING MICRO SWITCH
140-1	SM353CEV2140A	LOCK WASHER M8	169-2	SM353CEV2169A	OIL REGULATING MICRO SWITCH
141	SM353CEV2.141	LOCK HANDLE 3/8x30	170	SM353CEV2.170	ROUND HEAD SCREW M5x8
142	SM353CEV2.142	STATIONARY PLATE	171	SM353CEV2.171	WHEEL BOX-LEFT
143	SM353CEV2.143	SET SCREW M8x10	171-1	SM353CEV2171A	LOCK PLATE
144	SM353CEV2.144	BLADE BRACKET-RIGHT	171-2	SM353CEV2171B	WASHER M6
145	SM353CEV2.145	HEX. CAP BOLT M6x12	171-3	SM353CEV2171C	HEX. CAP BOLT M6x16
145-1	SM353CEV2145A	LOCK WASHER M6	172	SM353CEV2.172	HANDLE M12
146	SM353CEV2.146	WASHER M6	173	SN12.S	STEEL NUT M12 ZINC DIN934(SINGLE)
147	SM353CEV2.147	WIRE BRUSH	175	SM353CEV2.175	ROUND HEAD SCREW M5x10
148	SM353CEV2.148	WIRE BRUSH ROD	176	SM353CEV2.176	INDICATOR SCALE
149	SM353CEV2.149	GUIDE BRACKET-RIGHT	177	SM353CEV2.177	SLIDE BRACKET
149-1	SM353CEV2149A	NOZZLE	178	SM353CEV2.178	TENSION SHAFT
149-2	SCB850.SB	SOCKET HEAD CAP SCREW M8x50 BLACK	179	SM353CEV2.179	KEY 5x15
150	SM353CEV2.150	SPRING	180	SM353CEV2.180	HANDWHEEL
151	SM353CEV2.151	SET SCREW M6x8	181	SM353CEV2.181	DISC SPRING
152	SN10.S	STEEL NUT M10 ZINC DIN934(SINGLE)	182	SM353CEV2.182	FLAT WASHER
153	SM353CEV2.153	HEX. SOCKET CAP SCREW M8x45	183	SM353CEV2.183	TENSION INDICATOR
155	SN12.S	STEEL NUT M12 ZINC DIN934(SINGLE)	184	B/51104	BEARING RACE 51104

**NOTE:** It is our policy to continually improve products and as such we reserve the right to alter data, specifications and component parts without prior notice.

**IMPORTANT:** No liability is accepted for incorrect use of product.

**WARRANTY:** Guarantee is 12 months from purchase date, proof of which will be required for any claim.

**Sealey Group**, Kempson Way, Suffolk Business Park, Bury St Edmunds, Suffolk. IP32 7AR



01284 757500



01284 703534



sales@sealey.co.uk



www.sealey.co.uk



Parts Information:  
**Bandsaw 400mm Horizontal Hydraulic  
Arm**  
**Model No: SM353CE.V2**

Item	Part No.	Description
187	SM353CEV2.187	SLIDE
188	SM353CEV2.188	SET SCREW 5/16"x3/8"
189	SM353CEV2.189	EXTENSION BAR
190	SM353CEV2.190	BLADE WHEEL SHAFT
191	SN16.S	STEEL NUT M16 ZINC DIN934(SINGLE)
191-1	SM353CEV2.191A	SET SCREW M6x8
192	SM353CEV2.192	HEX. SOCKET CAP SCREW M8x20
193	SM353CEV2.193	HEX. SOCKET CAP SCREW M12x20
193-1	SM353CEV2.193A	WASHER

Item	Part No.	Description
194	SM353CEV2.194	GIB
195	SM353CEV2.195	HEX. CAP BOLT M16x30
196	SM353CEV2.196	HEX. CAP BOLT M10x60
197	SM353CEV2.197	LOCK WASHER M10
199	SM353CEV2.199	LIMIT SWITCH AC500V (5Amps)
200	SM353CEV2.200	ROUND HEAD SCREW 5/32"x32
201	SM353CEV2.201	LIMIT SWITCH GUARD
202	SM353CEV2.202	ROUND HEAD SCREW M5x8

**NOTE:** It is our policy to continually improve products and as such we reserve the right to alter data, specifications and component parts without prior notice.

**IMPORTANT:** No liability is accepted for incorrect use of product.

**WARRANTY:** Guarantee is 12 months from purchase date, proof of which will be required for any claim.

**Sealey Group**, Kempson Way, Suffolk Business Park, Bury St Edmunds, Suffolk. IP32 7AR



01284 757500



01284 703534



sales@sealey.co.uk



www.sealey.co.uk