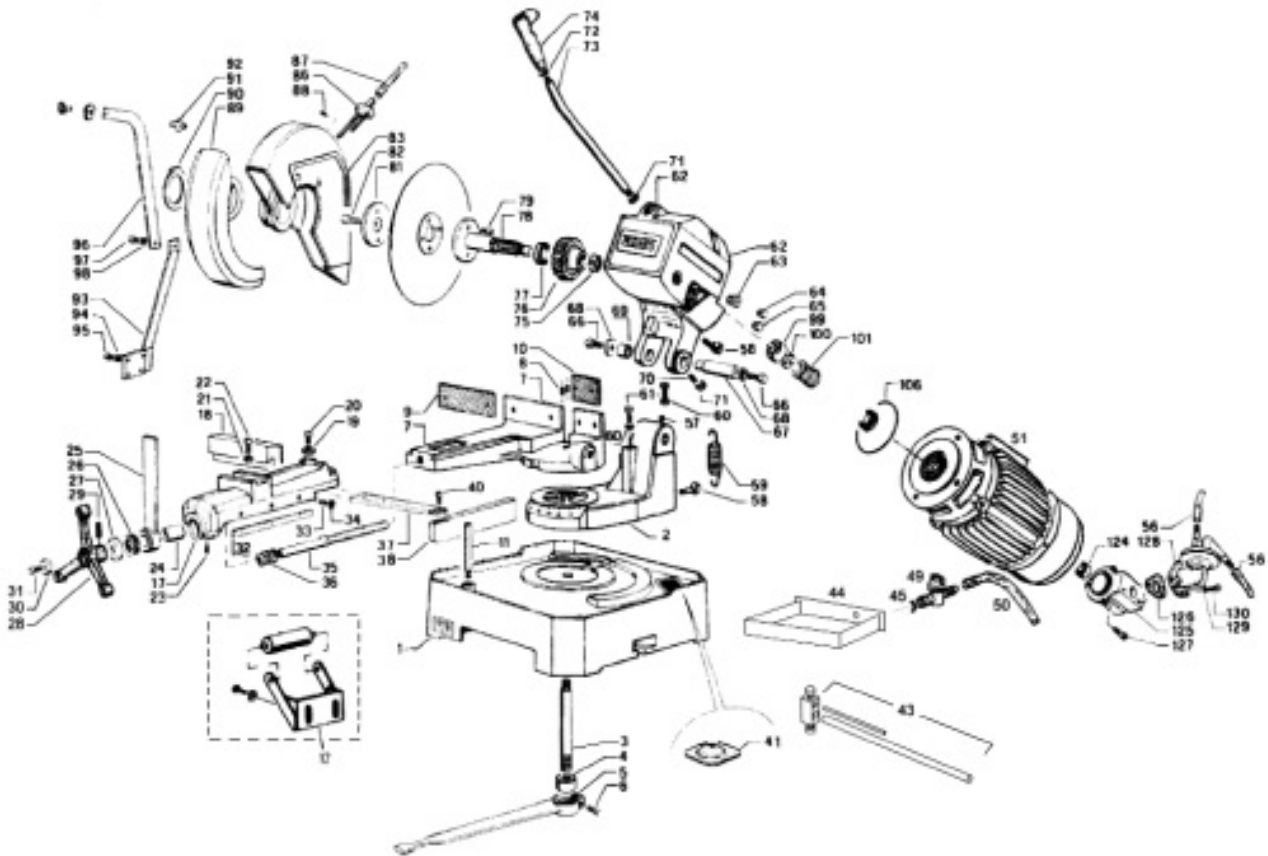




Parts Information:  
Cut-Off Saw with European Coolant Pump  
315mm 415V 3ph  
Model No: SM3154



**NOTE:** It is our policy to continually improve products and as such we reserve the right to alter data, specifications and component parts without prior notice.

**IMPORTANT:** No liability is accepted for incorrect use of product.

**WARRANTY:** Guarantee is 12 months from purchase date, proof of which will be required for any claim.

Sealey Group, Kempson Way, Suffolk Business Park, Bury St Edmunds, Suffolk. IP32 7AR



01284 757500



01284 703534



sales@sealey.co.uk



www.sealey.co.uk

Item	Part No.	Description
1	SM3154.001	Bed
2	SM3154.002	Revolving arm
3	SM3154.003	Lock pin
4	SM3154.004	Bush
5	SM3154.005	Lever
6	SM3154.006	Screw
7	SM3154.007	Counter vice
8	SM3154.008	Pin
9	SM3154.009	Vice plate
10	SM3154.010	Vice plate
11	SM3154.011	Support roller
12	SM3154.012	Assembly bracket
--	SM3154.013	Support roller (NOT SHOWN)
--	SM3154.014	Washer (2pcs) (NOT SHOWN)
--	SM3154.015	Screw (2pcs) (NOT SHOWN)
17	SM3154.017	Vice plate
18	SM3154.018	Vice plate
19	SM3154.019	Washer
20	SM3154.020	Screw
21	SM3154.021	Washer
22	SM3154.022	Screw
23	SM3154.023	Set screw
24	SM3154.024	Tube support
25	SM3154.025	Vice bar
26	B/51106	Bearing race 51106
27	SM3154.027	Cover
28	SM3154.028	Handle arm
--	SM3154.028-1	Handle boss
29	SM3154.029	Pin
30	SM3154.030	Washer
31	SM3154.031	Screw
32	SM3154.032	Gib
33	SM3154.033	Set screw
34	SM3154.034	Pin
35	SM3154.035	Vice thread
36	SM3154.036	Spring
37	SM3154.038	Plate complete
38	SM3154.038	Plate complete
40	SM3154.040	Screw
41	SM3154.041	Tank filter
43	SM3154.043	Complete stop bar assembly
44	SM3154.044	Coolant tray
45	SM3154.045	Clamp
49	SM3154.049	Coolant tap
50	SM3154.056	Coolant tube
51	SM3154.051	Motor
56	SM3154.056	Coolant tube
57	SM3154.057	Ball
58	SM3154.058	Spring screw
59	SM3154.059	Spring
60	SM3154.060	Nut
61	SM3154.061	Screw
62	SM3154.062	Motor head
63	SM3154.063	Black oil cap

Item	Part No.	Description
64	SM3154.064	Clear oil cap
65	SM3154.063	Black oil cap
66	SM3154.066	Screw
67	SM3154.067	Pin
68	SM3154.068	Washer
69	SM3154.069	Nut
70	SM3154.070	Set screw
71	MSCS820.SB	Csk socket machine screw m8x20 black
72	SN20.S	Steel nut m20 zinc din934(single)
73	SM3154.073	Head lever
74	SM3154.074	Head lever hand grip
75	SM3154.075	Nut
76	SM3154.076	Gear
77	SM3154.077	Gasket
78	SM3154.078	Blade shaft
79	SM3154.079	Key
81	SM3154.081	Blade shaft flange
82	SM3154.082	Screw
83	SM3154.083	Fixed guard
86	SM3154.086	Coolant tube
87	SM3154.087	Coolant tube
88	SM3154.088	Set screw
89	SM3154.089	Mobile guard
90	SM3154.090	E-ring
91	SM3154.091	Shaft
92	SM3154.092	Screw
93	SM3154.093	Mobile guard rod assembly
94	SM3154.094	Washer
95	SM3154.095	Screw
96	SM3154.096	Mobile guard rod
97	SM3154.097	Screw
98	SM3154.098	Washer
99	B/6301ZZ	Bearing 6301zz
100	SM3154.100	Nut
101	SM3154.101	Worm gear
106	SM3154.106	Seal
124	SM3154.124	Bearing
125	SM3154.125	Pump connection box
126	SM3154.126	Gasket
127	SM3154.127	Screw m5
128	SM3154.128	Coolant pump
129	SM3154.129	Washer
130	SM3154.130	Screw
--	SM300/B120	Blade 300x2.5x32mm 120t 8mm tooth pitch (NOT SHOWN)
--	SM300/B160	Blade 300x2.5x32mm 160t 6mm tooth pitch (NOT SHOWN)
--	SM300/B180	Blade 300x2.5x32mm 180t 5mm tooth pitch (NOT SHOWN)
--	SM300/B220	Blade 300x2.5x32mm 220t 4mm tooth pitch (NOT SHOWN)
--	SM2254.SA	Trigger switch ass'y (NOT SHOWN)
--	SR20M/02	Microswitch (NOT SHOWN)
--	SM3154.CB	Control box (NOT SHOWN)
--	B/6301ZZ	Bearing 6301zz / Bearing 6301zz (NOT SHOWN)