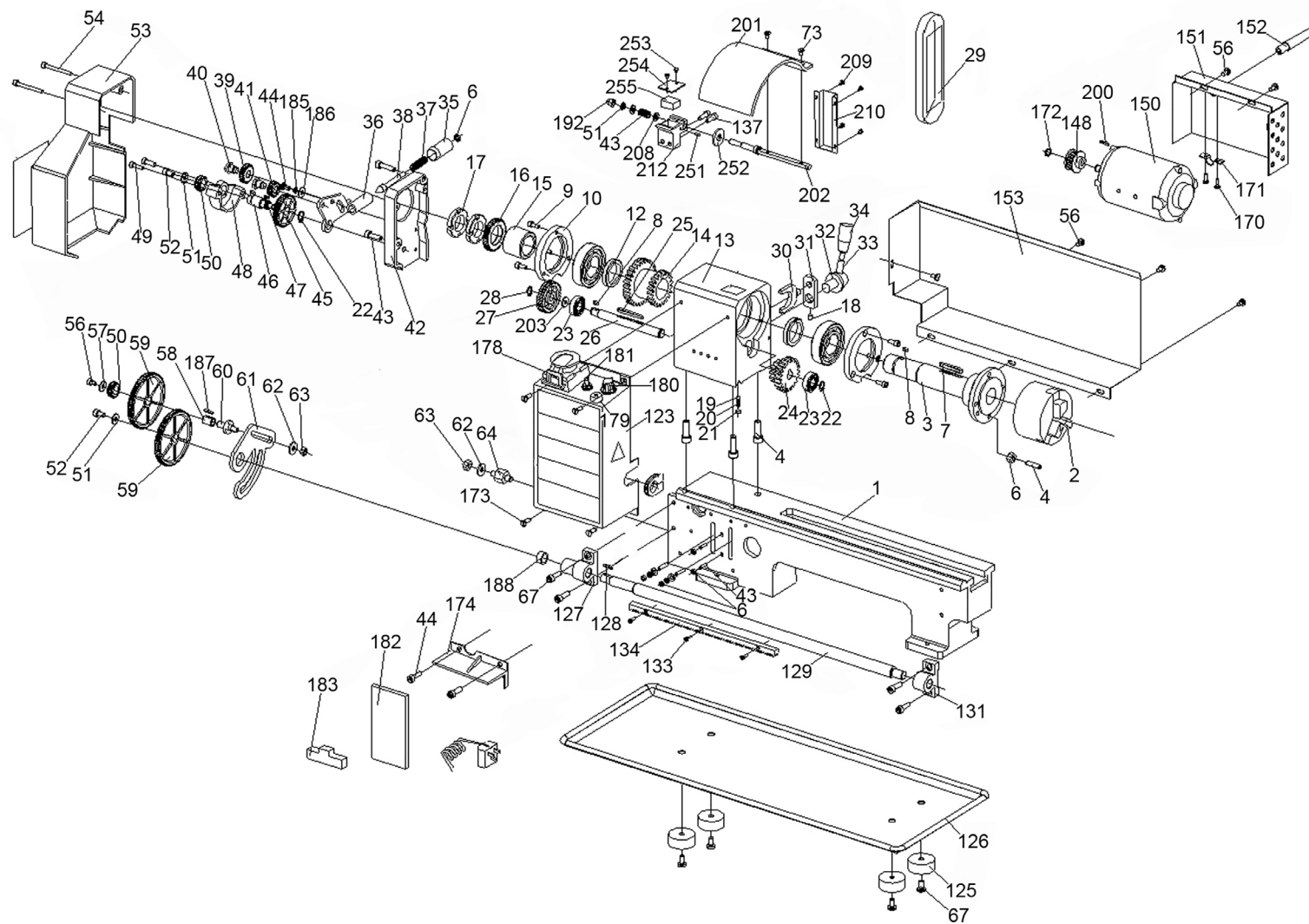


Parts Information: Metalworking Lathe 300mm Between Centres Model No: SM3002.V2



NOTE: It is our policy to continually improve products and as such we reserve the right to alter data, specifications and component parts without prior notice.

There may be alternative versions of this product, please contact us should you require this information.

IMPORTANT: No liability is accepted for incorrect use of product. Spare parts must be fitted by a competent person

WARRANTY: Guarantee is 12 months from purchase date, proof of which will be required for any claim.

Jack Sealey Ltd t/a Sealey Group, Kempson Way, Suffolk Business Park, Bury St Edmunds, Suffolk, IP32 7AR UK

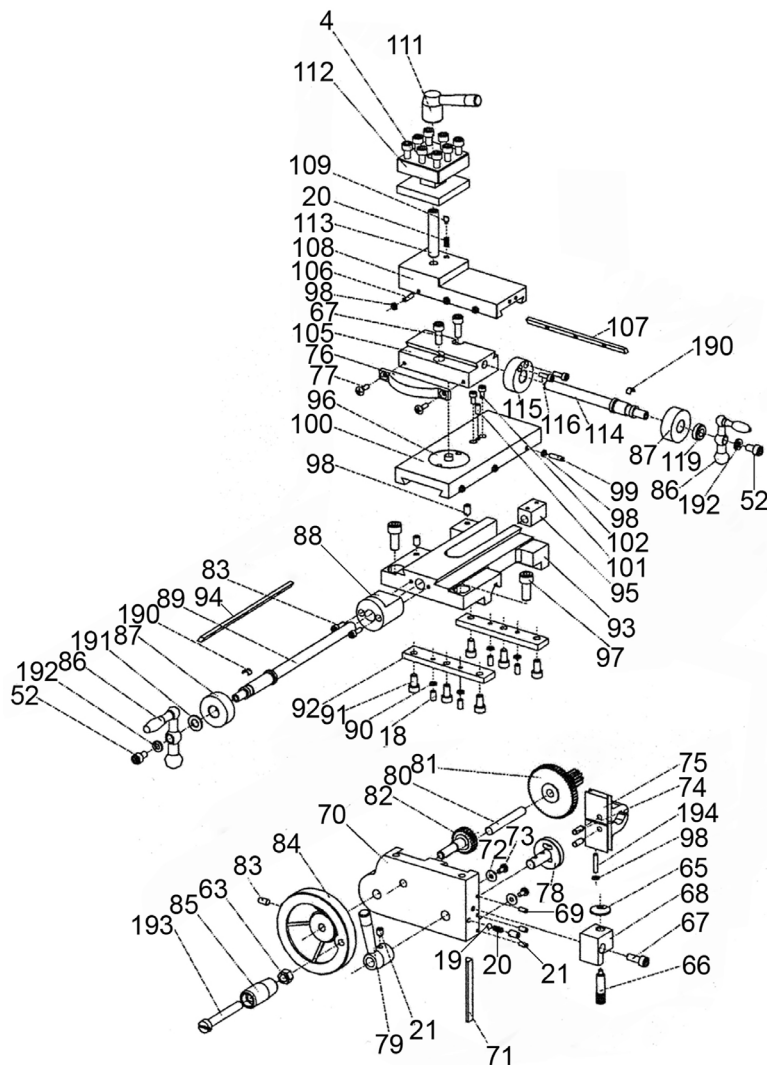
Jack Sealey (EU) Ltd t/a Sealey Group, Farney Street, Carrickmacross, Co. Monaghan, A81 PK68 Ireland

Tel: 01284 757500 • Email: sales@sealey.co.uk • Web: www.sealey.co.uk

Parts Information:

Metalworking Lathe 300mm Between Centres

Model No: SM3002.V2



NOTE: It is our policy to continually improve products and as such we reserve the right to alter data, specifications and component parts without prior notice.

There may be alternative versions of this product, please contact us should you require this information.

IMPORTANT: No liability is accepted for incorrect use of product. Spare parts must be fitted by a competent person

WARRANTY: Guarantee is 12 months from purchase date, proof of which will be required for any claim.

Jack Sealey Ltd t/a Sealey Group, Kempson Way, Suffolk Business Park, Bury St Edmunds, Suffolk, IP32 7AR UK

Jack Sealey (EU) Ltd t/a Sealey Group, Farney Street, Carrickmacross, Co. Monaghan, A81 PK68 Ireland

Tel: 01284 757500 • **Email:** sales@sealey.co.uk • **Web:** www.sealey.co.uk



TM

Parts Information: Metalworking Lathe 300mm Between Centres Model No: SM3002.V2

Item	Part No.	Description
1	SM3002.001	Base
2	SM3002.002	3 Jaw Chuck (c/w Key)
3	SM3002.003	Spindle
4	SCB625.SB	Socket Cap Bolt M6 x 25mm Black
6	SN6.S	Steel Nut M6
7	SM3002.007	Key M5 x 40mm
8	SM3002.008	Key M4 x 8mm
9	SCB512.SB	Socket Cap Bolt M5 x 12mm Black
10	SM3002.010	Cover
12	SM3002.012	Spacer
13	SM3002.013	Head Stock Casting
14	SM3002.014	H/L Gear 21T/29T
15	SM3002.015	Spacer
16	SM3002.016	Spur Gear 45t
17	SM3002.017	Half Nut M27 x 1.5mm
18	SM3002.018	Set Screw M5 x 8mm
19	SB-5.6	Steel Ball 5.6mm
20	SM3002.020	Compression Springs (Set Of 3)
21	GSM812.S	Grub Screw M8 x 12mm
22	RE231V3-06	External Circlip ID: 10.9mm
23	B/6201ZZ	Bearing 6201ZZ
24	SM3002.024	H/L Gear 12T/20T
25	SM3002.025	Parallel Key M4 x 45mm
26	SM3002.026	H/L Gear Shaft
27	SM3002.027	Pulley
28	ER1700PD.37	External Circlip ID: 9.2mm
29	SM3002.029	Timing Belt, Ribbed (L136)
30	SM3002.030	Shifting Fork
31	SM3002.031	Shifting Arm
32	SM3002.032	Knob, Shifting (Ø18mm x 40mm Ø 10mm) (F)
33	SM3002.033	Shifting Lever
34	SM3002.034	Shifting Grip
35	SM3002.035	Handle
36	SM3002.036	Handle Mount
37	SM3002.037	Spring Ø9.6mm
38	SM3002.038	Indicator
39	SM3002.039	Pinion 25T
40	SM3002.040	Support Screw
41	SM3002.041	Pinion 20T

Item	Part No.	Description
42	SM3002.042	Fixed cover
43	GSM625.S	Grub Screw M6 x 25mm Black
44	MSP510.S	Machine Screw Pan Head Phillips M5 x 10mm
45	SM3002.045	Gear 45T
46	SM3002.046	Shaft
47	SM3002.047	Parallel Key 3 x 8mm
48	SM3002.048	Mount
49	SCB518.SB	Socket Cap Bolt M5 x 18mm Black
50	SM3002.050	Pinion 20T
51	RW619.S	Repair Washer M6 x 19mm
52	SM3002.052	Screw M6 x 8mm
53	SM3002.053	Cover
54	SCB545.SB	Socket Cap Bolt M5 x 45mm Black
56	SCB58.SB	Socket Cap Bolt M5 x 8mm Black
57	SM3002.057	Washer M4 x 15mm
58	SM3002.058	Bush (c/w Key)
59	SM3002.059	Gear 80T
60	SM3002.060	Shaft
61	SM3002.061	Support Plate
62	SM3002.062	Washer M8
63	SN8.S	Steel Nut M8
64	SM3002.064	Shaft
65	SM3002.065	Dial 16T
66	SM3002.066	Shaft
67	SM3002.067	Screw M6 x 16mm
68	SM3002.068	Dial Indicator Body
69	SM3002.069	Set Screw M4 x 10mm
70	SM3002.070	Apron
71	SM3002.071	Gib Strip
72	SM3002.072	Repair Washer M4 x 12mm
73	MSP48.SB	Machine Screw Pan Head Phillips M4 x 8mm Black
74	SM3002.074	Shaft
75	SM3002.075	Half Nut (Pair)
76	SM3002.076	Angle Block
77	SM3002.077	Screw M4 x 10mm
78	SM3002.078	Groove Cam
79	SM3002.079	Handle
80	SM3002.080	Shaft

NOTE: It is our policy to continually improve products and as such we reserve the right to alter data, specifications and component parts without prior notice. There may be alternative versions of this product, please contact us should you require this information.

IMPORTANT: No liability is accepted for incorrect use of product. Spare parts must be fitted by a competent person

WARRANTY: Guarantee is 12 months from purchase date, proof of which will be required for any claim.

Jack Sealey Ltd t/a Sealey Group, Kempson Way, Suffolk Business Park, Bury St Edmunds, Suffolk, IP32 7AR UK

Jack Sealey (EU) Ltd t/a Sealey Group, Farney Street, Carrickmacross, Co. Monaghan, A81 PK68 Ireland

Tel: 01284 757500 • **Email:** sales@sealey.co.uk • **Web:** www.sealey.co.uk



Parts Information: Metalworking Lathe 300mm Between Centres Model No: SM3002.V2

Item	Part No.	Description
81	SM3002.081	Feeding Gear A 11T/54T
82	SM3002.082	Feeding Gear B 24T
83	SM3002.083	Screw M6 x 10mm
84	SM3002.084	Wheel
85	SM3002.085	Knob, Kit, Plastic (Ø18mm x 40mm x Ø8mm) (F)
86	SM3002.086A	Handle
87	SM3002.087	Dial
88	SM3002.088	Bracket
89	SM3002.089	Feeding Screw
90	SN5.S	Steel Nut M5
91	SCB610.SB	Socket Cap Bolt M6 x 10mm Black
92	SM3002.092	Slide Plate
93	SM3002.093	Saddle
94	SM3002.094	Gib Strip
95	SM3002.095	Brass Feeding Nut
96	SM3002.096	Swivel Disk
97	SM3002.097	Screw M8 x 20mm
98	SN4.S	Steel Nut M4
99	SM3002.099	Screw M4 x 16mm
100	SM3002.100	Cross Slide
101	GSM510.S	Grub Screw M5 x 10mm
102	SM3002.102	Screw M4 x 8mm
105	SM3002.105	Compound Rest B
106	SM3002.106	Screw M4 x 14mm
107	SM3002.107	Gib Strip
108	SM3002.108	Compound Rest A
109	SM3002.109	Positioning Pin
111	SM3002.111	Clamping Lever
112	SM3002.112	Tool Rest
113	SM3002.113	Stud
114	SM3002.114	Cross Feeding Screw
115	SM3002.115	Bracket
116	SM3002.116	Screw M4 x 12mm
119	SM3002.119	Spacer
123	SM3002-V2-CB	Complete Control Box (Wired)
125	SM3002.125	Rubber Foot
126	SM3002.126	Chip Tray
127	SM3002.127	Bracket
128	SM3002.128	Woodruff Key 3 x 16mm
129	SM3002.129	Lead Screw
131	SM3002.131	Bracket

Item	Part No.	Description
133	SCB310.SB	Socket Cap Bolt M3 x 10mm Black
134	SM3002.134	Rack
135	SM3002.135	Clamp Plate
136	FWM10.S	Flat Washer M10
137	SCB516.SB	Socket Cap Bolt M5 x 16mm Black
138	SM3002.138	Tailstock Casting
139	SM3002.139	Tailstock Screw
140	SM3002.140	Bracket
141	SCB410.SB	Socket Cap Bolt M4 x 10mm Black
142	SM3002.142	Tailstock Quill
143	SM3002.143	Centre
144	SM3002.144	Stud M8 x 40mm
145	SM3002.145	Clamp
146	SM3002.146	Handle
148	SM3002.148	Pulley
150	SM3002.150	Motor (Internal 230V 300W)
151	SM3002.151	Cover
152	SM3002.152	Cable Gland
153	SM3002.153	Rear Splash Guard
168	SM3002-V2.168	Rubber Pad
169	SM3002-V2.169	Bracing
170	MSP48.S	Machine Screw Pan Head Phillips M4 x 8mm
171	SM3002-V2.171	Clamp Block
172	SM3002-V2.172	External Circlip ID: 7.2mm
173	SM3002-V2.173	Screw M5 x 10mm
174	SM3002-V2.174	Protector
175	MSP510.SB	Machine Screw Pan Head Phillips M5 x 10mm Black
178	SM3002.170	Emergency Stop Switch
179	SM3002.163	Fuse Box
180	SM3002-V2.180	Variable Speed Control Knob (c/w Potentiometer)
181	SM3002.169	Switch, Toggle (F/O/R)
182	SM3002.164-N	PCB, Control Board 125 x 88mm
183	SM3002.165	Filter
185	SWM5.S	Spring Washer M5
186	RW519.S	Repair Washer M5 x 19mm
187	SM3002-V2.187	Woodruff Key
188	SM3002-V2.188	Spacer

NOTE: It is our policy to continually improve products and as such we reserve the right to alter data, specifications and component parts without prior notice. There may be alternative versions of this product, please contact us should you require this information.

IMPORTANT: No liability is accepted for incorrect use of product. Spare parts must be fitted by a competent person

WARRANTY: Guarantee is 12 months from purchase date, proof of which will be required for any claim.

Jack Sealey Ltd t/a Sealey Group, Kempson Way, Suffolk Business Park, Bury St Edmunds, Suffolk, IP32 7AR UK
Jack Sealey (EU) Ltd t/a Sealey Group, Farney Street, Carrickmacross, Co. Monaghan, A81 PK68 Ireland
Tel: 01284 757500 • **Email:** sales@sealey.co.uk • **Web:** www.sealey.co.uk



TM

Parts Information: Metalworking Lathe 300mm Between Centres Model No: SM3002.V2

Item	Part No.	Description
189	SM3002-V2.189	Oil fitting
190	SM3002-V2.190	Spring
191	SM3002-V2.191	Washer
192	SWM6.S	Spring Washer M6
193	SM3002-V2.193	Screw M8 x 55mm
194	SM3002-V2.194	Screw M4 x 38mm
196	SM3002-V2.196	Tailstock Plate
197	SM3002-V2.197	Screw M5 x 16mm
198	SM3002-V2.198	Flange
199	SM3002-V2.199	Screw M5 x 25mm
200	SM3002-V2.200	Woodruff Key 3 x 12mm
201	SM3002.V2-CG	Clear Plastic Chuck Guard
202	SM3002-V2.202	Hinge
203	FWM4.S	Flat Washer M4
208	FWM6.SB	Flat Washer M6 Black
209	SCB34.SB	Socket Cap Bolt M3 x 4mm Black
210	SM3002-V2.210	Switch Housing Cover
212	SM3002-V2.212	Fixed Cover
251	SM3002-V2.251	Round Pin

Item	Part No.	Description
252	SM3002-V2.252	Rotate Plate
253	SM3002-V2.253	Screw 2.9 x 4.5mm
254	SM3002-V2.254	Cover
255	SM3002-V2.255	Micro Switch 3A 250V
		Accessories - Please see Catalogue
--	SM3002CS11	Cutter Set 8 x 8mm (11pcs)
--	SM3002CS2	Cutter Set (5pcs)
--	SM3002CS5	Cutter Set 8 x 8mm (5pcs)
--	SM3002CS6	Cutter Set 8 x 8mm (6pcs)
--	SM3002FR	Moving Steady Rest
--	SM3002KTH	Knurling Tool
--	SM3002LD	Lathe Dog for SM3002
--	SM3002MA	Mill Attachment
--	SM3002QCCR	Quick Change Post
--	SM3002RC	Revolving Centre MT2
--	SM3002SC	Live Centre MT3
--	SM3002SR	Fixed Steady Rest
--	SM3002TC	Tailstock Chuck MT2 13mm
--	SM30024JC	Independent Chuck 4-Jaw

NOTE: It is our policy to continually improve products and as such we reserve the right to alter data, specifications and component parts without prior notice. There may be alternative versions of this product, please contact us should you require this information.

IMPORTANT: No liability is accepted for incorrect use of product. Spare parts must be fitted by a competent person

WARRANTY: Guarantee is 12 months from purchase date, proof of which will be required for any claim.

Jack Sealey Ltd t/a Sealey Group, Kempson Way, Suffolk Business Park, Bury St Edmunds, Suffolk, IP32 7AR UK

Jack Sealey (EU) Ltd t/a Sealey Group, Farney Street, Carrickmacross, Co. Monaghan, A81 PK68 Ireland

Tel: 01284 757500 • **Email:** sales@sealey.co.uk • **Web:** www.sealey.co.uk