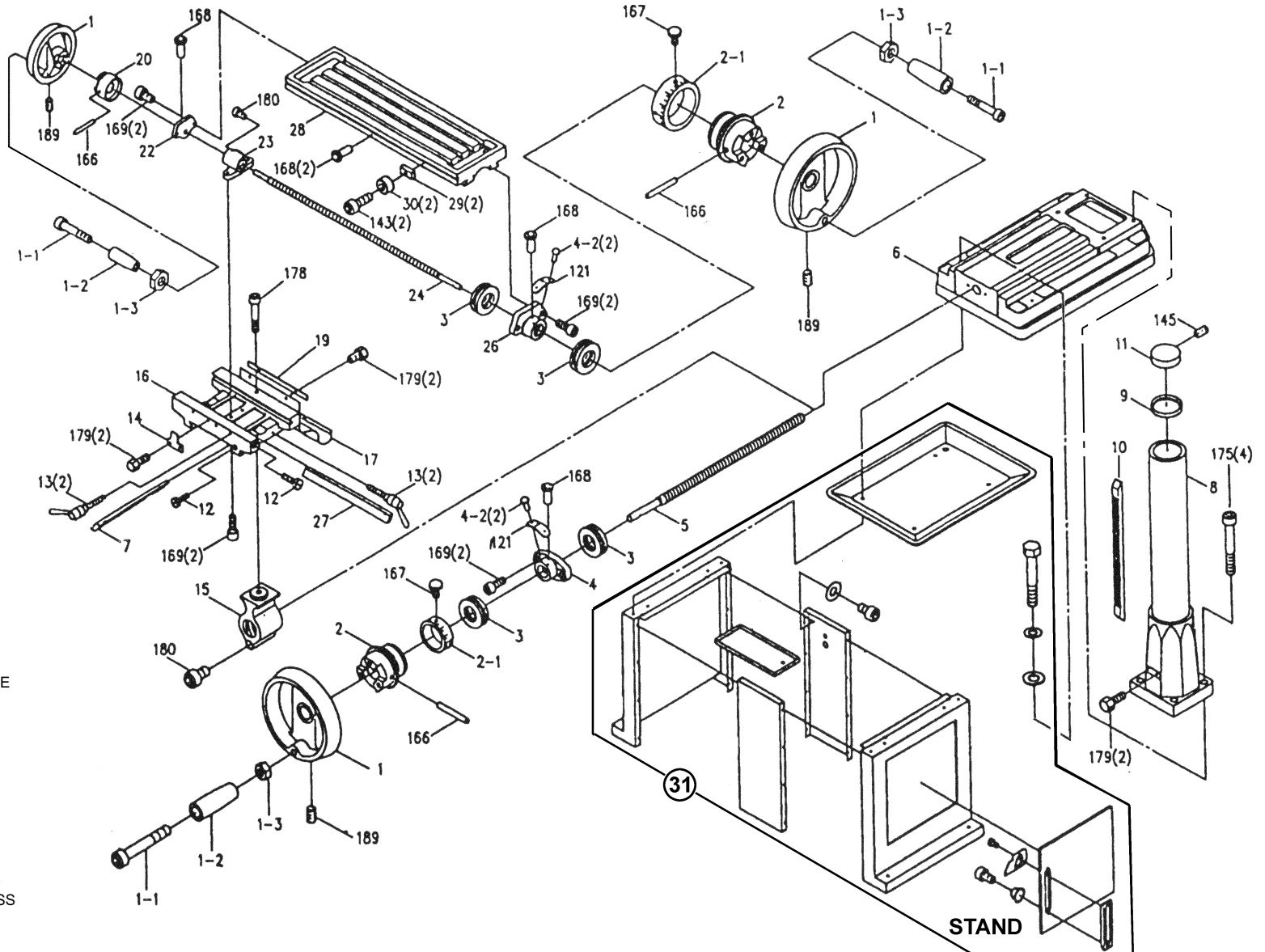


**(3 OF 3)**

Issue Date: 28 /11/02  
Issue No: 1

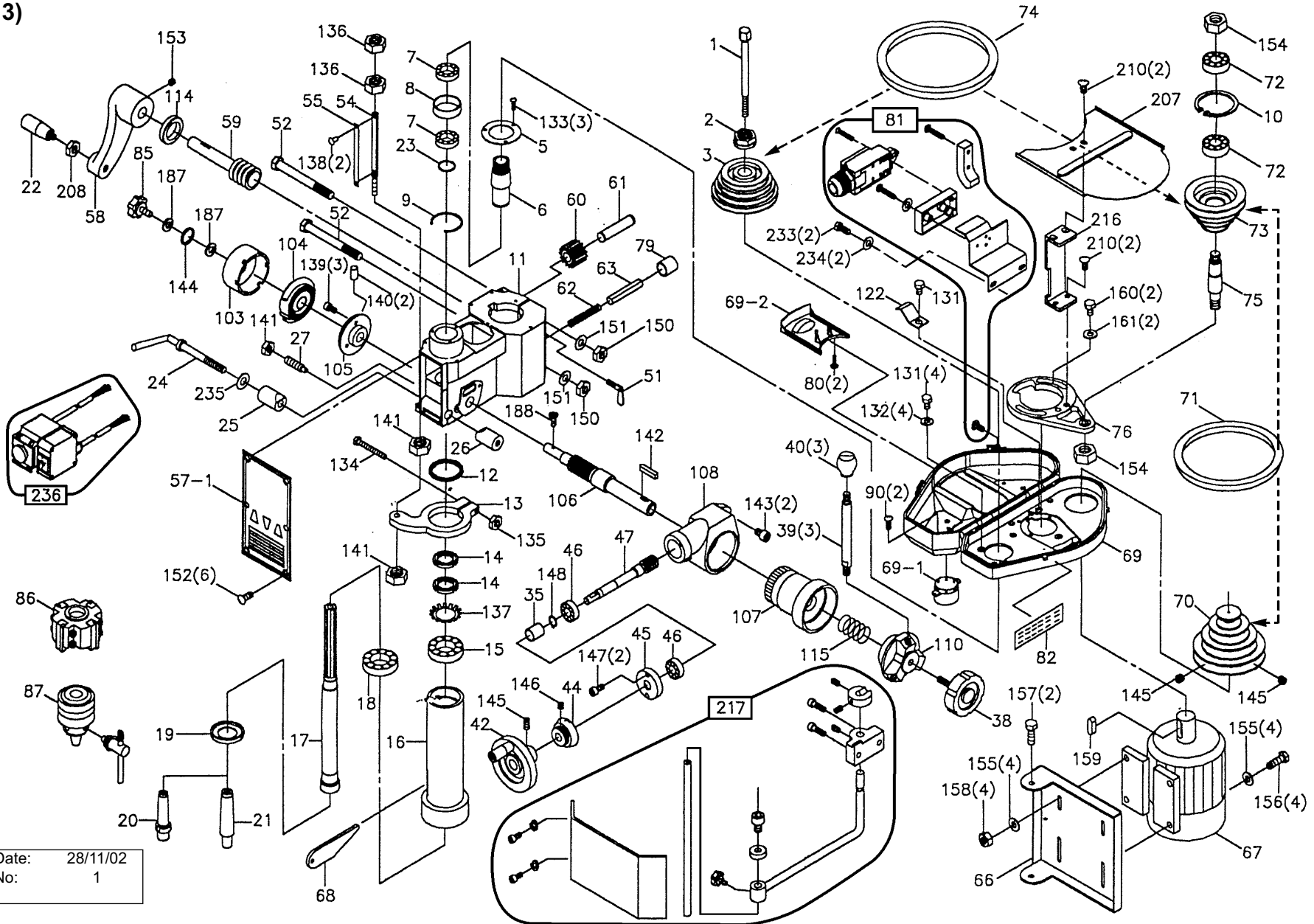
Item	Part No.	Description
1	SM25/6-001	WHEEL
1-1	SM25/6-001-1	SCREW, HEX SOCK HEAD
1-2	SM25/6-001-2	HANDLE
1-3	SM25/6-001-3	NUT
2	SM25/6-002	CLUTCH
2-1	SM25/6-002-1	INDICATOR, MICRO ADJUST
3	SM25/6-003M	METRIC THRUST BEARING
4	SM25/6-004	SQUARE FLANGE
4-2	SM25/6-004-2	RIVET
5	SM25/6-005M	METRIC TABLE SCREW
6	SM25/6-006	BASE
7	SM25/6-007	GIB STRIP
8	SM25/6-008	COLUMN BASE
9	SM25/6-009	COLUMN FLANGE RING
10	SM25/6-010	RACK
11	SM25/6-011	COLUMN HEAD
12	SM25/6-012	STRIP
13	SM25/6-013	LEAF SCREW
14	SM25/6-014	BLOCK
15	SM25/6-015	TABLE BASE NUT
16	SM25/6-016	BASE
17	SM25/6-017	PLATE
19	SM25/6-019	ANTIDUST PLATE
20	SM25/6-020	CLUTCH
22	SM25/6-022	FLANGE
23	SM25/6-023M	METRIC TABLE NUT
24	SM25/6-024M	METRIC TABLE SCREW
26	SM25/6-026	FLANGE
27	SM25/6-027	GIB STRIP
28	SM25/6-028	TABLE
29	SM25/6-029	BLOCK
30	SM25/6-030	RING
31	SM25/STAND	STAND FOR SM25, COMPLETE
121	SM25/6-121	INDICATOR, METRE
143	SM25/5-143	HEX HEAD SCREW
145	SM25/5-145	HEX HEAD SCREW
166	SM25/6-166	PIN
167	SM25/6-167	SCREW
168	SM25/6-168	BALL
169	SM25/6-169	BOLT
175	SM25/6-175	SCREW
178	SM25/6-178	SCREW
179	SM25/6-179	HEXAGON HEAD BOLT
180	SM25/6-180	SCREW, HEX SOCKET HEAD
189	SM25/6-189	SCREW, HEX SOCK HEADLESS



(1 OF 3)

1	SM25/5-001M	METRIC CHUCK ARBOR BOLT	61	SM25/5-061	SHAFT	143	SM25/5-143	SCREW (SO)
2	SM25/5-002	SPINDLE LOCKNUT	62	SM25/5-062	COMPRESSION SPRING	145	SM25/5-145	HEXAGON SOCKET HEADLESS SCREW
3	SM25/5-003	PULLEY (SO)	63	SM25/5-063	PIN	146	SM25/5-146	HEXAGON SOCKET HEADLESS SCREW
5	SM25/5-005	OUTER BEARING PLATE	66	SM25/5-066	MOUNT (SO)	147	SM25/5-147	HEXAGON SOCKET HEAD SCREW
6	SM25/5-006	SPINDLE TAPER SLEEVE	67	SM25/5-067	MOTOR 3/4HP	148	SM25/5-148	C-RETAINER RING
7	B/6007ZZ	BEARING	N/S	C/200-250	CAPACITOR,200mfd-250VAC	150	SM25/5-150	HEXAGON NUT
8	SM25/5-008	BEARING SPACER	68	SM25/5-068	KEY (SO)	151	SM25/5-151	WASHER (SO)
9	SM25/5-009	C-RETAINER RING	69	SM25/5-069	BELT COVER	152	SM25/5-152	CROSS-RECESS ROUND HEAD SCREW
10	SM25/5-010	C-RETAINER RING	69-1	SM25/5-069-1	SPINDLE COVER	153	SM25/5-153	SCREW (SO)
11	SM25/5-011	HEAD BODY	69-2	SM25/5-069-2	SHELF (SLIDING)	154	SM25/5-154	HEXAGON NUT
12	SM25/5-012	RUBBER FLANGE	70	SM25/5-070	MOTOR PULLEY	155	SM25/5-155	WASHER
13	SM25/5-013	FEED BASE	71	V/A31	V-BELT A-31 (A-800)	156	SM25/5-156	HEXAGON HEAD SCREW
14	SM25/5-014	LOCKNUTS	72	B/6204Z	BEARING, 6204Z	157	SM25/5-157	HEXAGON HEAD SCREW
15	SM25/5-015	TAPER ROLLER BEARING (30205J)	73	SM25/5-073	PULLEY (SO)	158	SM25/5-158	NUT (SO)
16	SM25/5-016	SLEEVE (SO)	74	V/A38	V-BELT A-38 (A-990)	159	SM25/5-159	KEY
17	SM25/5-017	SPINDLE SHAFT	75	SM25/5-075	INTER PULLEY SHAFT	160	SM25/5-160	HEXAGON HEAD BOLT
18	SM25/5-018	TAPER ROLLER BEARING (E30206J)	76	SM25/5-076	BASE (SO)	161	SM25/5-161	WASHER
19	SM25/5-019	BEARING CAP	79	SM25/5-079	RUBBER COLLAR	164	SM25/5-164	CROSS-RECESS ROUND HEAD SCREW
20	SM25/5-020M	METRIC CUTTER ARBOR	81	SM25.V2-81	MICROSWITCH ASSEMBLY	182	SM25/5-182	CROSS-RECESS ROUND HEAD SCREW
22	SM25/5-022	GRIP (SO)	85	SM25/5-085	SCREW (SO)	187	SM25/5-187	WASHER (SO)
23	SM25/5-023	RETAINER RING	86	SM25/5-086	CUTTER	188	SM25/5-188	CROSS-RECESS ROUND HEAD SCREW
24	SM25/5-024	HANDLE ROD	N/S	SM25/5-086CB	CUTTER BLADE	178	SM25/9-178	CROSS-RECESS ROUND HEAD SCREW
25	SM25/5-025	FIXED TIGHT COLLAR	87	SM25/5-087	DRILL CHUCK	217	SM25.V2-217	GUARD ASSEMBLY
26	SM25/5-026	FIXED TIGHT COLLAR (THREAD)	103	SM25/5-103	USE SM25/5-104 (SPRING COVER)	236	SM25.V2-236	SWITCH ASSEMBLY
27	SM25/5-027	SCREW KEY	104	SM25/5-104	SPRING (SO)	N/S	DPG/SM25	SM25 SAFETY CHUCK GUARD 92MM
35	SM25/5-035	BEARING SPACER	105	SM25/5-105	SPRING BASE			
38	SM25/3066-3	LOCK BOLT WITH KNOB	106	SM25/5-106	SHAFT (SO)			
39	SM25/5-039	HANDLE ROD	107	SM25/5-107	GEAR (SO)			
40	SM25/5-040	KNOB	108	SM25/5-108	COVER (SO)			
42	SM25/5-042	FEED HANDLE WHEEL	110	SM25/5-110	HUB (SO)			
44	SM25/5-044M	INDICATOR (SO)	111	SM25/5-111	TERMINAL			
45	SM25/5-045	WORM COVER	131	SM25/5-131	CROSS-RECESS ROUND HEAD SCREW			
46	B/6202Z	BEARING, 6202Z	132	SM25/5-132	WASHER			
47	SM25/5-047	WORM SHAFT	133	SM25/5-133	CROSS-RECESS ROUND HEAD SCREW			
51	SM25/5-051	SCREW (SO)	134	SM25/5-134	HEXAGON HEAD BOLT			
52	SM25/5-052	HEAD BODY FIX BOLT	135	SM25/5-135	HEXAGON NUT			
54	SM25/5-054	ROD (SO)	136	SM25/5-136	HEXAGON NUT			
55	SM25/5-055	GRADUATED DIAL	137	SM25/5-137	LOCKWASHER			
56	SM25/5-056	SWITCH - FORWARD/REVERSE	138	SM25/5-138	RIVETS			
57	SM25/5-057	NAME PLATE	139	SM25/5-139	CROSS-RECESS ROUND HEAD SCREW			
58	SM25/5-058	HEAD HANDLE	140	SM25/5-140	SPRING PIN			
59	SM25/5-059	WORM SHAFT	141	SM25/5-141	HEXAGON NUT			
60	SM25/5-060	WORM	142	SM25/5-142	KEY (SO)			

(2 OF 3)



Issue Date: 28/11/02  
Issue No: 1