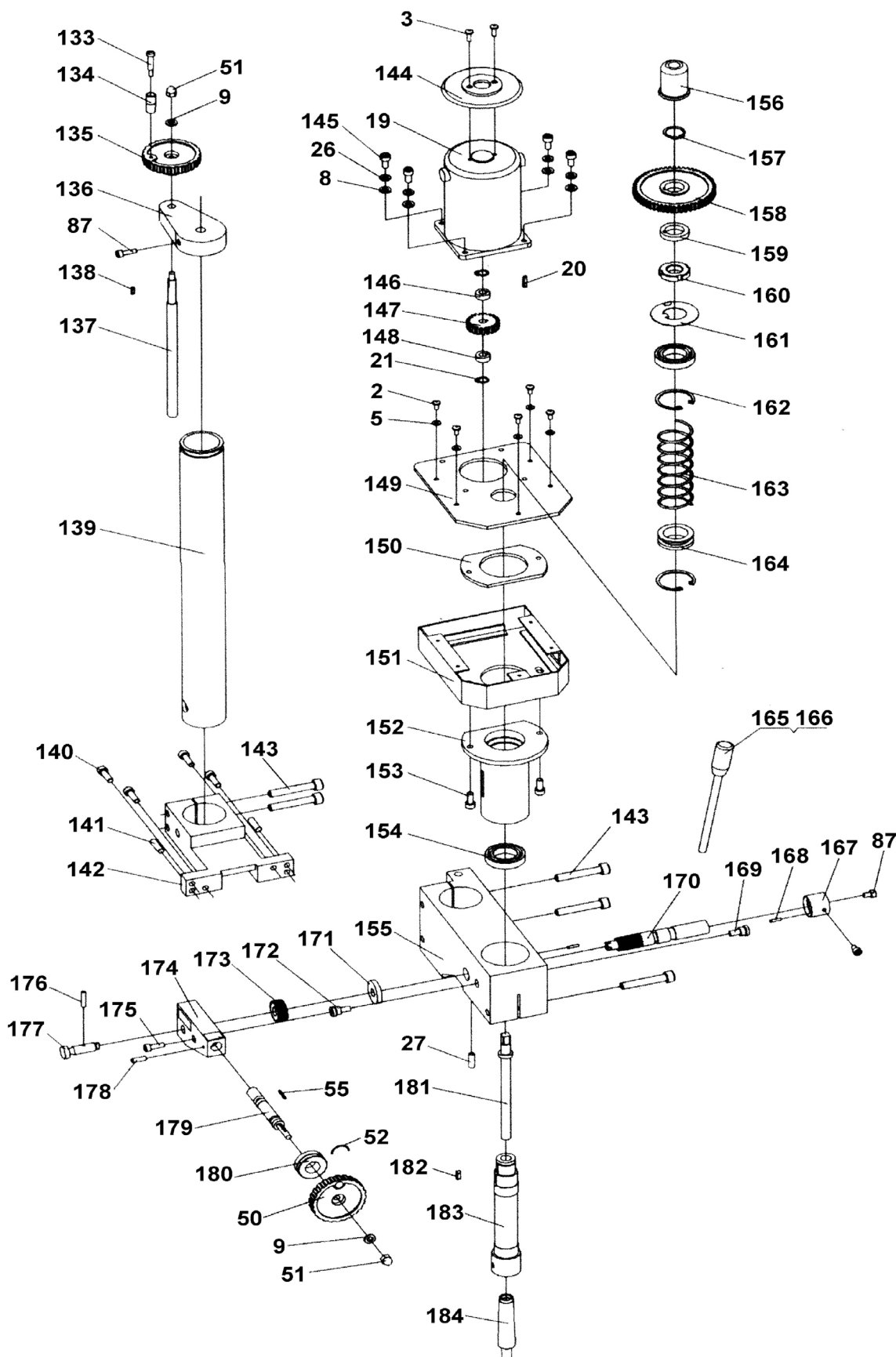


Parts Information:

Drill Head for Mini Lathe SM2503A

Model No: SM2503B



NOTE: It is our policy to continually improve products and as such we reserve the right to alter data, specifications and component parts without prior notice. There may be alternative versions of this product, please contact us should you require this information.

IMPORTANT: No liability is accepted for incorrect use of product. Spare parts must be fitted by a competent person

WARRANTY: Guarantee is 12 months from purchase date, proof of which will be required for any claim.

Jack Sealey Ltd t/a Sealey Group, Kempson Way, Suffolk Business Park, Bury St Edmunds, Suffolk, IP32 7AR UK

Jack Sealey (EU) Ltd t/a Sealey Group, Farney Street, Carrickmacross, Co. Monaghan, A81 PK68 Ireland

Tel: 01284 757500 • **Email:** sales@sealey.co.uk • **Web:** www.sealey.co.uk



Parts Information: Drill Head for Mini Lathe SM2503A Model No: SM2503B

| Item | Part No. | Description |
|------|------------|---------------------------------|
| 2 | SM2503.002 | Cap Screw GB818 M4 x 8mm |
| 3 | SM2503.003 | Cap Screw GB818 M4 x 12mm |
| 5 | SM2503.005 | Washer 4 |
| 8 | SM2503.008 | M6 Half Nut, Black |
| 9 | FWM6.SB | Flat Washer M6 Black |
| 19 | SM2503.019 | Motor |
| 20 | SM2503.020 | Key 3 x 16mm |
| 21 | SM2503.021 | Check Ring 8 |
| 26 | SM2503.026 | Spring Washer 6 |
| 27 | SM2503.027 | Screw M6 x 20mm |
| 50 | SM2503.050 | Handwheel |
| 51 | SN6.SD | Steel Nut M6 Domed |
| 52 | SM2503.052 | Spring Steel |
| 55 | SM2503.055 | Key 2 x 18mm |
| 87 | SM2503.087 | Screw M5 x 8mm |
| 133 | SM2503.133 | Bolt, Slot Head M6 x 55mm Black |
| 134 | SM2503.134 | Handle Sleeve |
| 135 | SM2503.135 | Handwheel |
| 136 | SM2503.136 | Leadscrew Bracket |
| 137 | SM2503.137 | Lifter |
| 138 | SM2503.138 | Woodruff Key 3 x 10mm |
| 139 | SM2503.139 | Column |
| 140 | SM2503.140 | Screw M6 x 18mm |
| 141 | SM2503.141 | Pin 6 x 24mm |
| 142 | SM2503.142 | Column Bracket |
| 143 | SM2503.143 | Screw M8 x 50mm |
| 144 | SM2503.144 | Protecting Cover for Motor |
| 145 | SM2503.145 | Screw M6 x 12mm |
| 146 | SM2503.146 | Spacing Ring |
| 147 | SM2503.147 | Motor Gear |
| 148 | SM2503.148 | Spacing Ring |
| 149 | SM2503.149 | Cover up Plate |
| 150 | SM2503.150 | Quill, Fixed Plate |
| 151 | SM2503.151 | Gear Box |

| Item | Part No. | Description |
|------|------------|-----------------------------|
| 152 | SM2503.152 | Spindle Quill |
| 153 | SM2503.153 | Screw M6 x 14mm |
| 154 | SM2503.154 | Bearing |
| 155 | SM2503.155 | Spindle Base |
| 156 | SM2503.156 | Safety Cover |
| 157 | MC550.24 | External Circlip ID: 18.5mm |
| 158 | SM2503.158 | Spindle Gear (Z=55) |
| 159 | SM2503.159 | Spacing Ring |
| 160 | SM2503.160 | Round Nut M24 x 1.5mm |
| 161 | SM2503.161 | Washer 24 |
| 162 | SM2503.162 | Internal Circlip Ø41.0mm |
| 163 | SM2503.163 | Compression Spring 32mm |
| 164 | SM2503.164 | Spring Support |
| 165 | SM2503.165 | Hand Shank |
| 166 | SM2503.166 | Lever Cap M8 x 40mm |
| 167 | SM2503.167 | Read Out Sleeve |
| 168 | SM2503.168 | Spring Pin M3 x 12mm |
| 169 | SM2503.169 | Site Screw |
| 170 | SM2503.170 | Gear Shaft |
| 171 | SM2503.171 | Spacing Ring |
| 172 | SM2503.172 | Connect Site Screw |
| 173 | SM2503.173 | Bevel Gear |
| 174 | SM2503.174 | Worm Base |
| 175 | SM2503.175 | Screw M5 x 18mm |
| 176 | SM2503.176 | Pin 3 x 12mm |
| 177 | SM2503.177 | Connect Shaft |
| 178 | SM2503.178 | Pin 3 x 18mm |
| 179 | SM2503.179 | Worm Shaft |
| 180 | SM2503.180 | Dial |
| 181 | SM2503.181 | Lock Bolt |
| 182 | SM2503.182 | Woodruff Key 4 x 12mm |
| 183 | SM2503.183 | Drill Spindle |
| 184 | SM2503.184 | Taper Shank B12 |

NOTE: It is our policy to continually improve products and as such we reserve the right to alter data, specifications and component parts without prior notice. There may be alternative versions of this product, please contact us should you require this information.

IMPORTANT: No liability is accepted for incorrect use of product. Spare parts must be fitted by a competent person

WARRANTY: Guarantee is 12 months from purchase date, proof of which will be required for any claim.

Jack Sealey Ltd t/a Sealey Group, Kempson Way, Suffolk Business Park, Bury St Edmunds, Suffolk, IP32 7AR UK
Jack Sealey (EU) Ltd t/a Sealey Group, Farney Street, Carrickmacross, Co. Monaghan, A81 PK68 Ireland
Tel: 01284 757500 • **Email:** sales@sealey.co.uk • **Web:** www.sealey.co.uk