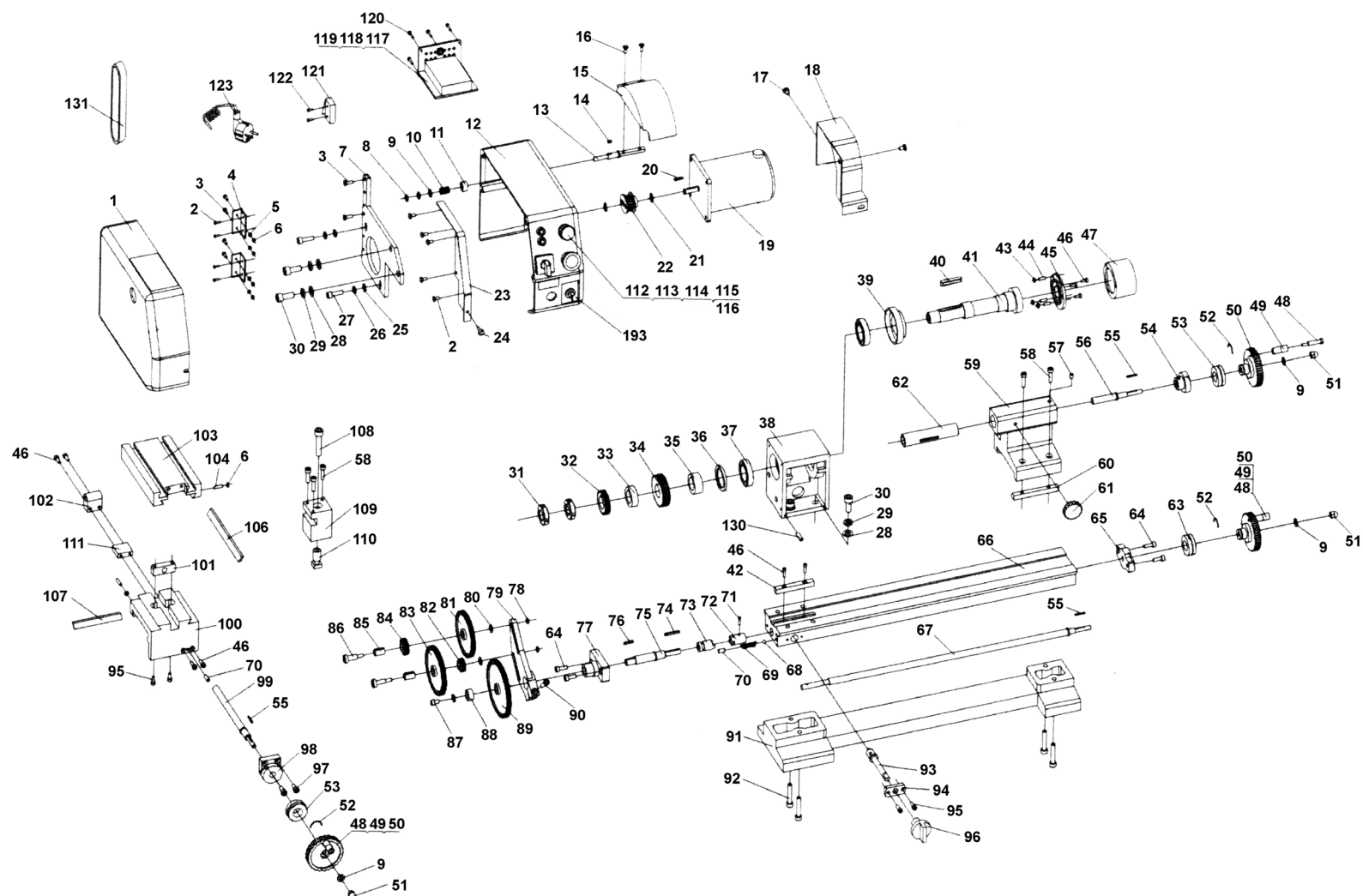




TM

# Parts Information: Metalworking Mini Lathe 250mm Model No: SM2503A



**NOTE:** It is our policy to continually improve products and as such we reserve the right to alter data, specifications and component parts without prior notice.

There may be alternative versions of this product, please contact us should you require this information.

**IMPORTANT:** No liability is accepted for incorrect use of product. Spare parts must be fitted by a competent person

**WARRANTY:** Guarantee is 12 months from purchase date, proof of which will be required for any claim.

Jack Sealey Ltd t/a Sealey Group, Kempson Way, Suffolk Business Park, Bury St Edmunds, Suffolk, IP32 7AR UK

Jack Sealey (EU) Ltd t/a Sealey Group, Farney Street, Carrickmacross, Co. Monaghan, A81 PK68 Ireland

Tel: 01284 757500 • Email: [sales@sealey.co.uk](mailto:sales@sealey.co.uk) • Web: [www.sealey.co.uk](http://www.sealey.co.uk)



## Parts Information: Metalworking Mini Lathe 250mm Model No: SM2503A

Item	Part No.	Description
1	SM2503.001	Change Gear Cover
2	SM2503.002	Cap Screw GB818 M4 x 8mm
3	SM2503.003	Cap Screw GB818 M4 x 12mm
4	SM2503.004	Hinge 38 x 31mm
5	SM2503.005	Washer 4
6	SN4.S	Steel Nut M4
7	SM2503.007	Cantilever
8	SM2503.008	M6 Half Nut Black
9	FWM6.SB	Flat Washer M6 Black
10	SM2503.010	Compression Spring Ø9.7mm
11	SM2503.011	Spacing Ring
12	SM2503.012	Cover for Spindle Box
13	SM2503.013	Rotate Spindle
14	SM2503.014	Key 3 x 6mm
15	SM2503.015	Protect Cover for Chuck
16	MSC48.SB	Csk Phillips Machine Screw M4 x 8mm Black
17	SM2503.017	Cap Screw M5 x 8mm
18	SM2503.018	Rear Splash Guard
19	SM2503.019	Motor
20	SM2503.020	Key 3 x 16mm
21	SM2503.021	Check Ring 8
22	SM2503.022	Timing Pulley
23	SM2503.023	Support Plate
24	SM2503.024	Screw M4 x 8mm
25	SM2503.025	Washer 6
26	SM2503.026	Spring Washer 6
27	SM2503.027	Screw M6 x 20mm
28	SM2503.028	Washer 8
29	SM2503.029	Spring Washer 8
30	SM2503.030	Screw M8 x 20mm
31	SN18.S	Steel Nut M18
32	SM2503.032	Spindle Gear
33	SM2503.033	Spacing Ring 1
34	SM2503.034	Spindle Timing Pulley
35	SM2503.035	Spacing Ring 2
36	SM2503.036	Behind Oil Seal (Ring)
37	B/30205	Bearing 30205
38	SM2503.038	Spindle Box
39	SM2503.039	Front Oil Seal (Ring)
40	SM2503.040	Key 6 x 36mm

Item	Part No.	Description
41	SM2503.041	Spindle
42	SM2503.042	Key
43	SN6.S	Steel Nut M6
44	SM2503.044	Screw M6 x 25mm
45	SM2503.045	Chuck Flange
46	SM2503.046	Round Cap Screw M4 x 12mm
47	SM2503.047	80mm 3-Jaw Chuck
48	SM2503.048	Handle Screw (Set of 3)
49	SM2503.049	Small Handle
50	SM2503.050	Handwheel
51	SN6.SD	Steel Nut M6 Domed
52	SM2503.052	Spring Steel
53	SM2503.053	Dial
54	SM2503.054	Screw Base
55	SM2503.055	Key 2 x 18mm
56	SM2503.056	Tailstock Screw
57	SM2503.057	Screw M5 x 8mm
58	SCB520.SB	Socket Cap Bolt M5 x 20mm Black
59	SM2503.059	Tailstock Casting
60	SM2503.060	Wedge
61	SM2503.061	Lock Handle
62	SM2503.062	Tailstock Quill
63	SM2503.063	Dial
64	SM2503.064	Screw M5 x 14mm
65	SM2503.065	Screw Bracket
66	SM2503.066	Bed Lead Rail
67	SM2503.067	Leadscrew
68	SB-6.4	Steel Ball 6.4mm
69	SM2503.069	Compression Spring Ø4.8mm
70	SM2503.070	Screw M6 x 10mm
71	SM2503.071	Pin 3 x 14mm
72	SM2503.072	Clutch Bracket
73	SM2503.073	Clutch
74	SM2503.074	Woodruff Key
75	SM2503.075	Shaft
76	SM2503.076	Woodruff Key
77	SM2503.077	Gear Shaft Bracket
78	SN5.S	Steel Nut M5
79	SM2503.079	Support Plate
80	SM2503.080	Washer

**NOTE:** It is our policy to continually improve products and as such we reserve the right to alter data, specifications and component parts without prior notice. There may be alternative versions of this product, please contact us should you require this information.

**IMPORTANT:** No liability is accepted for incorrect use of product. Spare parts must be fitted by a competent person

**WARRANTY:** Guarantee is 12 months from purchase date, proof of which will be required for any claim.

**Jack Sealey Ltd t/a Sealey Group**, Kempson Way, Suffolk Business Park, Bury St Edmunds, Suffolk, IP32 7AR UK  
**Jack Sealey (EU) Ltd t/a Sealey Group**, Farney Street, Carrickmacross, Co. Monaghan, A81 PK68 Ireland  
**Tel:** 01284 757500 • **Email:** sales@sealey.co.uk • **Web:** www.sealey.co.uk



TM

## Parts Information: Metalworking Mini Lathe 250mm Model No: SM2503A

Item	Part No.	Description
81	SM2503.081	Change Gear Z=72
82	SM2503.082	Change Gear Z=19
83	SM2503.083	Change Gear Z=76
84	SM2503.084	Change Gear Z=24
85	SM2503.085	Gear Sleeve
86	SM2503.086	Gear Shaft
87	SM2503.087	Screw M5 x 8mm
88	SM2503.088	Spacing Ring
89	SM2503.089	Change Gear Z=90
90	SM2503.090	Screw M5 x 25mm
91	SM2503.091	Bed Base
92	SM2503.092	Screw M6 x 35mm
93	SM2503.093	Unplug Shaft
94	SM2503.094	Dam Board
95	SM2503.095	Screw M4 x 10mm
96	SM2503.096	Clutch Rotate Knob
97	SM2503.097	Screw M5 x 12mm
98	SM2503.098	Leadscrew Bracket
99	SM2503.099	Cross Slide Screw M4 x 16mm
100	SM2503.100	Saddle
101	SM2503.101	Cross Slide Nut
102	SM2503.102	Leadscrew Nut
103	SM2503.103	Cross Slide

Item	Part No.	Description
104	SM2503.104	Screw M4 x 16mm
106	SM2503.106	Cross Slide Wedge
107	SM2503.107	Gib Strip
108	SCB840.SB	Socket Cap Bolt M8 x 40mm Black
109	SM2503.109	Tool Rest
110	SM2503.110	Tool Rest Shaft
111	SM2503.111	Connect Block
112	SM2503.112	Potentiometer
113	SM2503.113	Switch, Press & Twist (On/Off) 3A 220V
114	SM2503.114	Forward/Reverse/Off Switch 12A 250V (c/w Knob)
115	SM2503.115	Power Indicator Light 220V
116	SM2503.116	Fuse Box
117	SM2503.117N	PCB Circuit Board 102 x 70mm
118	SM2503.118	Lock Connect
119	SM2503.119	PC Board Box
120	SM2503.120	Screw ST2.9 x 10mm
121	SM2503.121	Micro Switch
122	SM2503.122	Screw ST1.9 x 10mm
123	SM2503.123	Power Cord (c/w Plug)
130	SM2503.130	Screw M5 x 12mm
131	SM2503.131	Timing Belt
193	SM2503.193	Power Supply Toggle Switch (On/Off)

**NOTE:** It is our policy to continually improve products and as such we reserve the right to alter data, specifications and component parts without prior notice. There may be alternative versions of this product, please contact us should you require this information.

**IMPORTANT:** No liability is accepted for incorrect use of product. Spare parts must be fitted by a competent person

**WARRANTY:** Guarantee is 12 months from purchase date, proof of which will be required for any claim.

**Jack Sealey Ltd t/a Sealey Group**, Kempson Way, Suffolk Business Park, Bury St Edmunds, Suffolk, IP32 7AR UK

**Jack Sealey (EU) Ltd t/a Sealey Group**, Farney Street, Carrickmacross, Co. Monaghan, A81 PK68 Ireland

**Tel:** 01284 757500 • **Email:** sales@sealey.co.uk • **Web:** www.sealey.co.uk