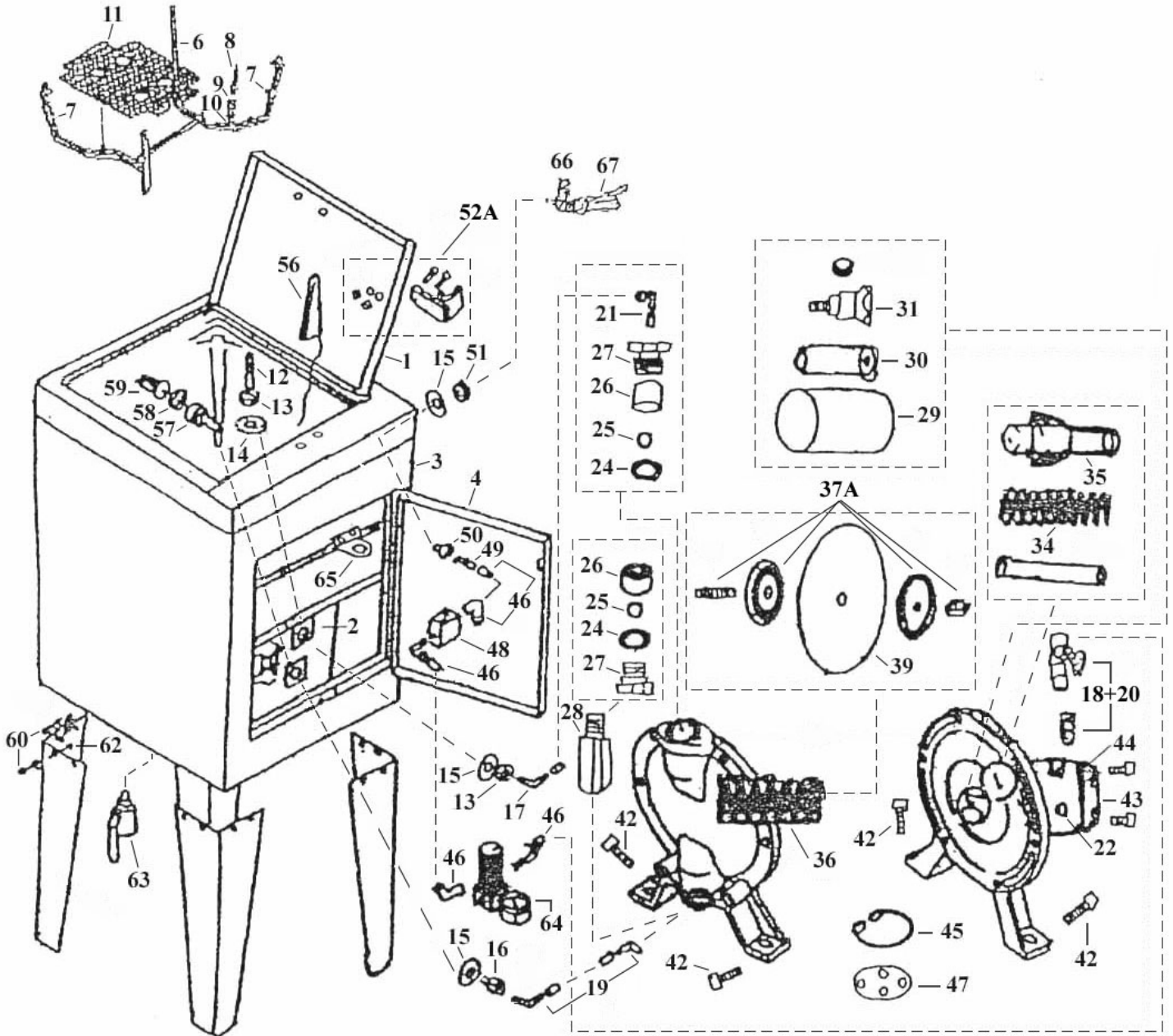




Parts Information:
Air Operated Water Based Spray Gun
Cleaning Tank - 2 Gun
Model No: SM233



NOTE: It is our policy to continually improve products and as such we reserve the right to alter data, specifications and component parts without prior notice.

IMPORTANT: No liability is accepted for incorrect use of product.

WARRANTY: Guarantee is 12 months from purchase date, proof of which will be required for any claim.

Sealey Group, Kempson Way, Suffolk Business Park, Bury St Edmunds, Suffolk. IP32 7AR



01284 757500



01284 703534



sales@sealey.co.uk



www.sealey.co.uk



Parts Information:
**Air Operated Water Based Spray Gun
 Cleaning Tank - 2 Gun
 Model No: SM233**

Item	Part No.	Description
1	SM233.01	LID COVER
2	SM233.02	TANK
3	SM233.03	FRAME
4	SM233.04	DOOR
6	SM233.06	PIPE
7	SM233.07	NOZZLE (STAINLESS)
8	SM233.08	LONG NOZZLE (STAINLESS)
9	SM233.09	EXTENSION BAR
10	SM233.10	EXTENSION BAR
11	SM233.11	SCREEN PLATFORM
12	SM233.12	ANGLE CONNECTOR
13	SM233.13	HEX NUT
14	SM233.14	WASHER
15	SM233.15	WASHER
16	SM233.16	CONNECTOR
17	SM233.17	ANGLE CONNECTOR
18+20	SM233.18+20	REGULATOR + CONNECTOR
19	SM233.19	ANGLE CONNECTOR
21	SM233.21	ANGLE CONNECTOR
22	SM233.22	BLASTER
24	SM233.24	WASHER
25	SM233.25	NYLON BALL 19mm
26	SM233.26	BALL STOPPER
27	SM233.27	HEX NUT
28	SM233.28	CONNECTOR
29	SM233.29	VALVE HOLDER
30	SM233.30	VALVE COVER
31	SM233.31	VALVE PISTON
34	SM233.34	SPRING

Item	Part No.	Description
35	SM233.35	COOL DOWN VALVE
36	SM233.36	SPRING
37A	SM233.37A	SCREW ASS'Y
39	SM233.39	DIAPHRAGM
42	SM233.42	BOLT M8X26 c/w washer & nut
44	SM233.44	AIR CAP
45	SM233.45	RETAINING RING
46	SM233.46	ANGLE CONNECTOR
47	SM233.47	WASHER
48	SM233.48	AUTOMATIC STOP SWITCH
49	SM233.49	CONNECTOR
50	SM233.50	CONNECTOR
51	SM233.51	HEX NUT
52A	SM233.52A	SCREW ASS'Y
56	SM233.56	TRIGGER LOCK
57	SM233.57	CONNECTOR
58	SM233.58	HOSE CLAMP
59	SM233.59	STAINER
60	SM233.60	SCREW
62	SM233.62	HEX NUT(INCLUDES WASHER)
63	SM233.63	BALL VALVE
64	SM233.64A	PRESSURE VALVE ASS'Y
--	SM233.64-1	PRESSURE VALVE (NOT SHOWN)
--	SM233.64-2	GAUGE 10kg/cm ² 40mm OD BTM FITTING (NOT SHOWN)
65	SM233.65	PRESSURE HOLDER
66	SM233.66	ANGLE CONNECTOR
67	SM233.67	BALL VALVE
--	SM233/PUMP	PUMP ASSEMBLY (NOT SHOWN)

NOTE: It is our policy to continually improve products and as such we reserve the right to alter data, specifications and component parts without prior notice.

IMPORTANT: No liability is accepted for incorrect use of product.

WARRANTY: Guarantee is 12 months from purchase date, proof of which will be required for any claim.

Sealey Group, Kempson Way, Suffolk Business Park, Bury St Edmunds, Suffolk. IP32 7AR



01284 757500



01284 703534



sales@sealey.co.uk



www.sealey.co.uk