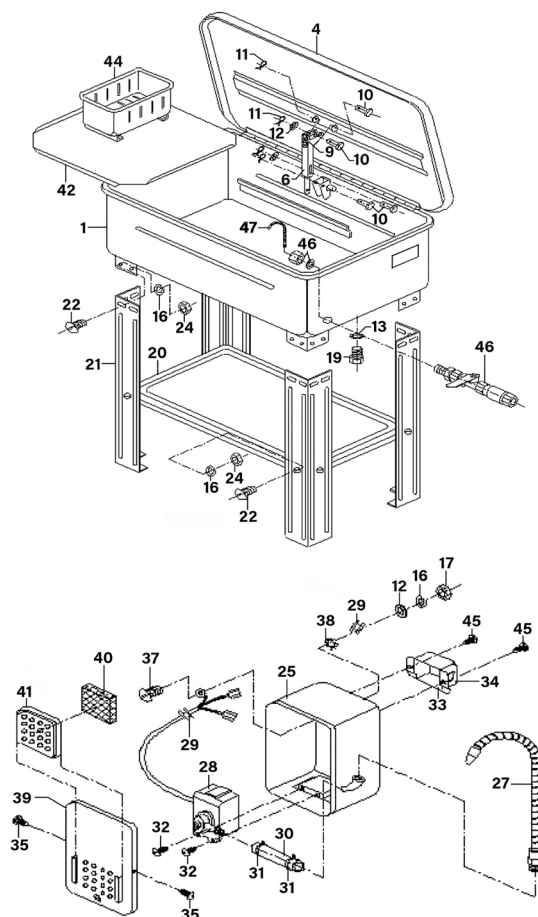


Parts Information: Workshop Parts Washer with Turbo Feature 50L Model No: SM20.V3



Item	Part No.	Description
1	SM20.V3-01	Tank
4	SM20.V3-04	Cover
6	SM40D.V2-15	Safety Lever
9	SM20.V3-09	Plate for Lid Arm
10	SM20.V3-10	Pin
11	SM20.V3-11	Spring Pin M1.4 x 12mm
12	FWM4.S	Flat Washer M4
13	SM20.V3-13	O-Ring (20.81 x 14.61 x 3.10mm)
16	SWM6.S	Spring Washer M6
17	SM20.V3-17	Nut
19	SM20.V3-19	Plug
20	SM20.V3-20	Shelf
21	SM20.V3-21	Leg
22	MSPS412.S	Machine Screw Pan Head Slotted M4 x 12mm
24	SN4.S	Steel Nut M4
25	SM20.V3-25	Pump Housing
27	SM40D.V2-18	Flexible Pipe
28	SM20.V3-28	Pump

Item	Part No.	Description
29	SM20.V3-29	Strain Relief
30	SM20.V3-30	Hose (15 x 20 x 55mm)
31	SM20.V3-31	Hose Clamp
32	SM20.V3-32	Rd Head S/T Screw M5 x 16mm
33	SM40D.V2-22	Switch Housing
34	SM40D.V2-21	Switch, On/Off Rocker 16A 250V
35	SM20.V3-35	Screw, Tapping
37	MSP612.S	Machine Screw Pan Head Phillips M6 x 12mm
38	TS10SEW.121	M4 Ext Tooth Washer
39	SM20.V3-39	Pump Housing Cover
40	SM40D.V2-09	Filter
41	SM40D.V2-08	Filter Cover
42	SM20.V3-42	Shelf, Internal
44	SM40.V2-02	Basket
45	SM20.V3-45	Rd Head S/T Screw M3.8 x 11mm
46	SM20.V3-46	Quick Coupling
47	SM20.V3-47	Flexible Hose (4 x 7 x 170mm)
--	SM20.V3-PUMP	Complete Pump (Not Shown)

NOTE: It is our policy to continually improve products and as such we reserve the right to alter data, specifications and component parts without prior notice. There may be alternative versions of this product, please contact us should you require this information.

IMPORTANT: No liability is accepted for incorrect use of product. Spare parts must be fitted by a competent person

WARRANTY: Guarantee is 12 months from purchase date, proof of which will be required for any claim.

Jack Sealey Ltd t/a Sealey Group, Kempson Way, Suffolk Business Park, Bury St Edmunds, Suffolk, IP32 7AR UK

Jack Sealey (EU) Ltd t/a Sealey Group, Farney Street, Carrickmacross, Co. Monaghan, A81 PK68 Ireland

Tel: 01284 757500 • Email: sales@sealey.co.uk • Web: www.sealey.co.uk