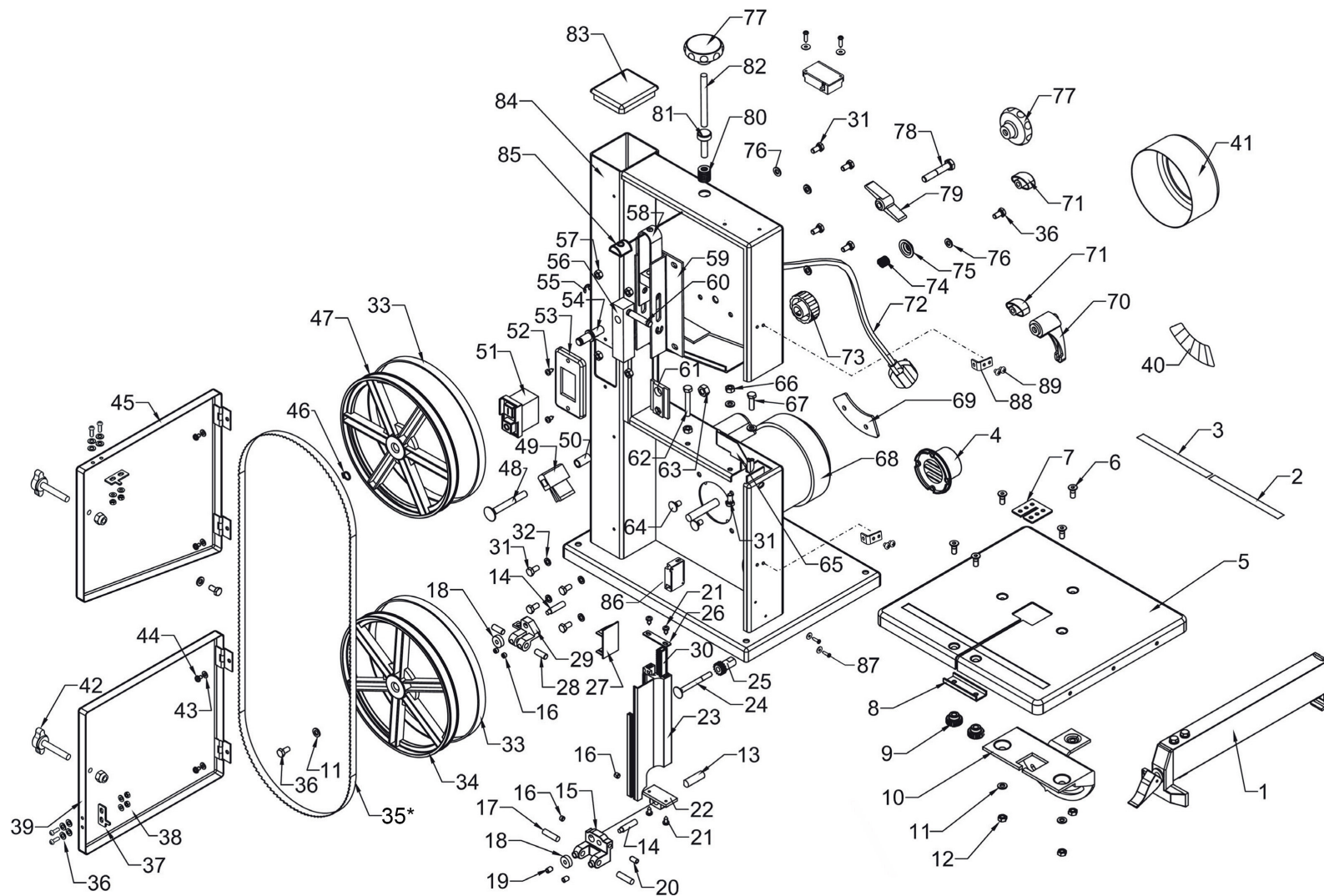


Parts Information: Professional Bandsaw 200mm Model No: SM1303.V2



NOTE: It is our policy to continually improve products and as such we reserve the right to alter data, specifications and component parts without prior notice.

There may be alternative versions of this product, please contact us should you require this information.

IMPORTANT: No liability is accepted for incorrect use of product. Spare parts must be fitted by a competent person

WARRANTY: Guarantee is 12 months from purchase date, proof of which will be required for any claim.

Jack Sealey Ltd t/a Sealey Group, Kempson Way, Suffolk Business Park, Bury St Edmunds, Suffolk, IP32 7AR UK

Jack Sealey (EU) Ltd t/a Sealey Group, Farney Street, Carrickmacross, Co. Monaghan, A81 PK68 Ireland

Tel: 01284 757500 • Email: sales@sealey.co.uk • Web: www.sealey.co.uk



TM

Parts Information: Professional Bandsaw 200mm Model No: SM1303.V2

Item	Part No.	Description
1	SM1303.V2-01	Rip Fence Assembly
2	SM1303.V2-02	Scale Label, Right
3	SM1303.V2-03	Scale Label, Left
4	SM1303.V2-04	Suction Connector
5	SM1303.V2-05	Working Table
6	SM1303.V2-06	Countersunk Hex Head Bolt
7	SM1303.V2-07	Table Insert
8	SM1303.V2-08	U-Plate
9	SM1303.V2-09	Nut
10	SM1303.V2-10	Table Support
11	SM1303.V2-11	Washer
12	SM1303.V2-12	Nut
13	SM1303.V2-13	Locking Pin
14	SM1303.V2-14	Thrust Bearing Shaft
15	SM1303.V2-15	Housing Upper Guide
16	SM1303.V2-16	Hex Socket Set Screw
17	SM1303.V2-17	Upper Pilot Pin
18	B/625ZZ	Bearing 625ZZ
19	SM1303.V2-19	Hex Socket Set Screw
20	SM1303.V2-20	Hex Socket Set Screw
21	SM1303.V2-21	Self Tapping Screw Pan Head
22	SM1303.V2-22	Seat Upper Guide
23	SM1303.V2-23	Guide Lever
24	SM1303.V2-24	Cup Head Square Neck Bolt
25	SM1303.V2-25	Shaft
26	SM1303.V2-26	Cover Board
27	SM1303.V2-27	Slide Board
28	SM1303.V2-28	Lower Pilot Pin
29	SM1303.V2-29	Housing Lower Guide
30	SM1303.V2-30	Rack
31	SM1303.V2-31	Hex Bolt
32	SM1303.V2-32	Spring Washer
33	SM1303.V2-33	Bandsaw Tyre
34	SM1303.V2-34	Lower Wheel
35*	SM1303B06	Bandsaw Blade 1400 x 6.5 x 0.35mm 6tpi - Please see Catalogue
36	SM1303.V2-36	Bolt
37	SM1303.V2-37	Insert Slice
38	SM1303.V2-38	Nut
39	SM1303.V2-39	Door Lower
40	SM1303.V2-40	Angle Scale Label
41	SM1303.V2-41	Fan Cover

Item	Part No.	Description
42	SM1303.V2-42	Knob, Plastic Ø30 x 60mm, M6x40mm Threaded (M)
43	SM1303.V2-43	Washer
44	SM1303.V2-44	Pan Head Screw
45	SM1303.V2-45	Door Upper
46	SM1303.V2-46	Circlip for Shaft
47	SM1303.V2-47	Upper Wheel
48	SM1303.V2-48	Cup Head Square Neck Bolt
49	SM1304.V2-45	Brush
50	SM1303.V2-50	Spacer Bushing
51	SM1303.V2-51	On/Off Magnetic Press Button Switch
52	SM1303.V2-52	Cross Countersunk Head Screw
53	SM1303.V2-53	Fixing Plate for Switch
54	SM1303.V2-54	Bearing Bolt Upper
55	SM1303.V2-55	Bearing Gasket
56	SM1303.V2-56	Bearing Bolt Support Upper
57	SM1303.V2-57	Hex Flanged Nut
58	SM1303.V2-58	Blade Tensioner
59	SM1303.V2-59	Guide Plate Assembly
60	SM1303.V2-60	Pin Guide
61	SM1303.V2-61	Guide Piece
62	SM1303.V2-62	Hex Bolt
63	SM1303.V2-63	Hex Flanged Nut
64	SM1303.V2-64	Cup Head Square Neck Bolt
65	SM1303.V2-65	Lower Blade Guard
66	SM1303.V2-66	Hex Locking Nut
67	SM1303.V2-67	Hex Bolt
68	SM1303.V2-68	Motor (External 230V 180W)
69	SM1303.V2-69	Plank
70	SM1303.V2-70	Locking Handle
71	SM1304.V2-64	Knob, Tension Adjust, Plastic Ø32mm, M5 Threaded (F)
72	SM1303.V2-72	Power Cord and Plug
73	SM1303.V2-73	Knob, Setting Ø40mm, 12mm Oval (F)
74	SM1303.V2-74	Spring Ø12mm
75	SM1303.V2-75	Dishing Cover
76	SM1303.V2-76	Washer
77	SM1304.V2-31	Adjustable Handle
78	SM1303.V2-78	Hex Bolt
79	SM1304.V2-37	Knob, Winged, Plastic Ø66mm, M6 Threaded (F)
80	SM1303.V2-80	Disc Washer M8

NOTE: It is our policy to continually improve products and as such we reserve the right to alter data, specifications and component parts without prior notice. There may be alternative versions of this product, please contact us should you require this information.

IMPORTANT: No liability is accepted for incorrect use of product. Spare parts must be fitted by a competent person

WARRANTY: Guarantee is 12 months from purchase date, proof of which will be required for any claim.

Jack Sealey Ltd t/a Sealey Group, Kempson Way, Suffolk Business Park, Bury St Edmunds, Suffolk, IP32 7AR UK

Jack Sealey (EU) Ltd t/a Sealey Group, Farney Street, Carrickmacross, Co. Monaghan, A81 PK68 Ireland

Tel: 01284 757500 • Email: sales@sealey.co.uk • Web: www.sealey.co.uk



TM

Parts Information:
Professional Bandsaw 200mm
Model No: SM1303.V2

Item	Part No.	Description
81	SM1303.V2-81	Shaft
82	SM1303.V2-82	Thread Bolt
83	SM1303.V2-83	Lamella Plug
84	SM1303.V2-84	Frame
85	SM1303.V2-85	Nut
86	SM1303.V2-86	Micro Switch
87	SM1303.V2-87	Screw
88	SM1303.V2-88	Fixed Plates
89	SM1303.V2-89	Pan Head Screw

Item	Part No.	Description
--	SM1303.V2-90	Mitre Gauge Assembly (Not Shown)
--	SM1303.V2-91	Tension Adjuster Plastic Bush (Not Shown)
--	SM1303.95	Push Rod (Not Shown)
		*Other Options Available - Please see Catalogue
--	SM1303B10	Bandsaw Blade 1400 x 6.5 x 0.35mm 10tpi
--	SM1303B14	Bandsaw Blade 1400 x 6.5 x 0.35mm 14tpi
--	SM1303B24	Bandsaw Blade 1400 x 6.5 x 0.35mm 24tpi

NOTE: It is our policy to continually improve products and as such we reserve the right to alter data, specifications and component parts without prior notice. There may be alternative versions of this product, please contact us should you require this information.

IMPORTANT: No liability is accepted for incorrect use of product. Spare parts must be fitted by a competent person

WARRANTY: Guarantee is 12 months from purchase date, proof of which will be required for any claim.

Jack Sealey Ltd t/a Sealey Group, Kempson Way, Suffolk Business Park, Bury St Edmunds, Suffolk, IP32 7AR UK

Jack Sealey (EU) Ltd t/a Sealey Group, Farney Street, Carrickmacross, Co. Monaghan, A81 PK68 Ireland

Tel: 01284 757500 • **Email:** sales@sealey.co.uk • **Web:** www.sealey.co.uk