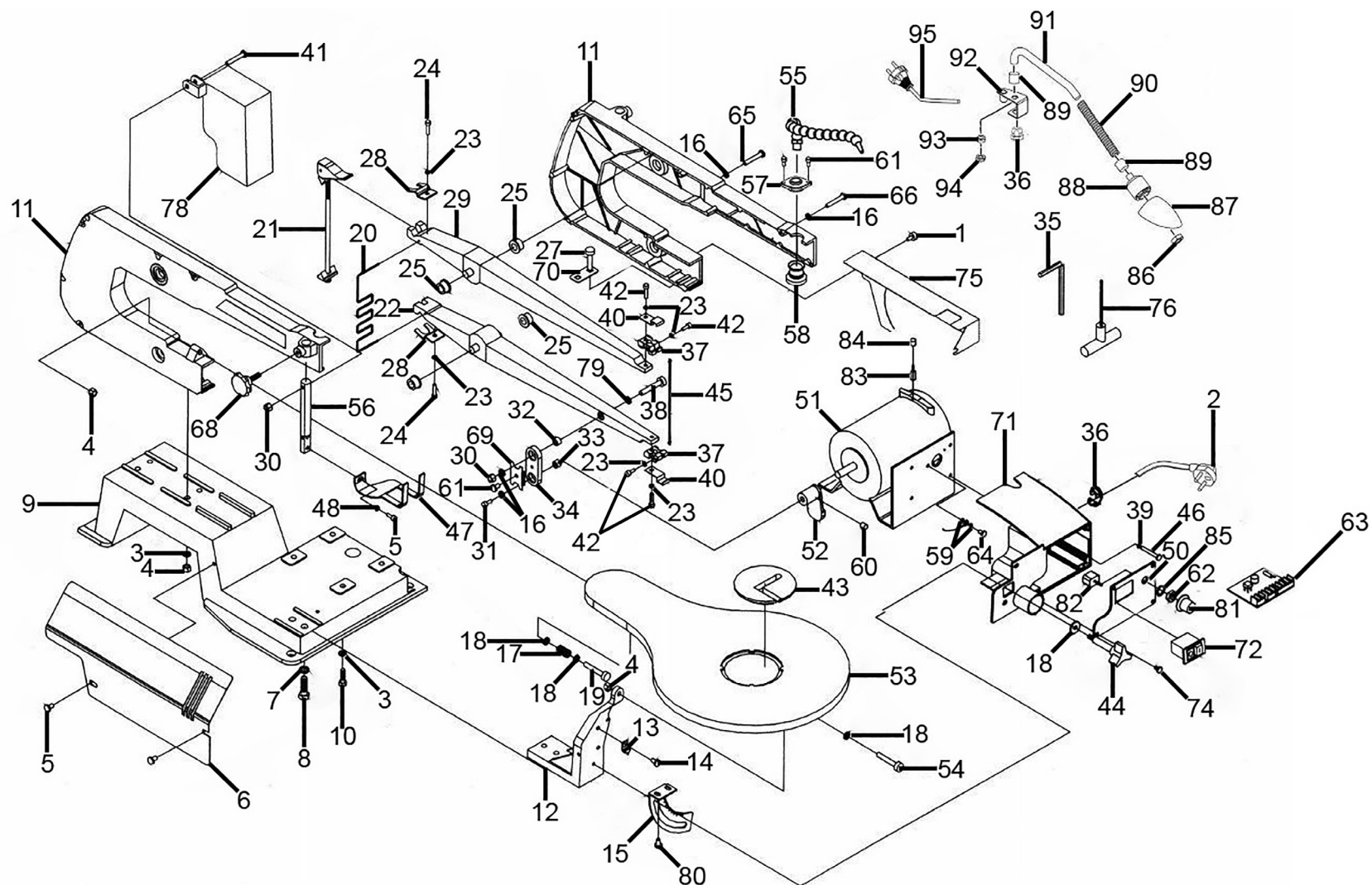


Parts Information:  
Variable Speed Scroll Saw 406mm Throat 230V  
Model No: SM1302.V2



**NOTE:** It is our policy to continually improve products and as such we reserve the right to alter data, specifications and component parts without prior notice.

There may be alternative versions of this product, please contact us should you require this information.

**IMPORTANT:** No liability is accepted for incorrect use of product. Spare parts must be fitted by a competent person

**WARRANTY:** Guarantee is 12 months from purchase date, proof of which will be required for any claim.

Jack Sealey Ltd t/a Sealey Group, Kempson Way, Suffolk Business Park, Bury St Edmunds, Suffolk, IP32 7AR UK

Jack Sealey (EU) Ltd t/a Sealey Group, Farney Street, Carrickmacross, Co. Monaghan, A81 PK68 Ireland

Tel: 01284 757500 • Email: [sales@sealey.co.uk](mailto:sales@sealey.co.uk) • Web: [www.sealey.co.uk](http://www.sealey.co.uk)



Parts Information:  
**Variable Speed Scroll Saw 406mm Throat  
230V  
Model No: SM1302.V2**

Item	Part No.	Description
1	SM1302.V2-01	Screw ST4.2 x 10mm
2	SM1302.V2-02	Power Supply
3	SWM6.S	Spring Washer M6
4	SN6.S	Steel Nut M6
5	MSP510.S	Machine Screw Pan Head Phillips M5 x 10mm
6	SM1302.V2-06	Plate Cover
7	SWM8.S	Spring Washer M8
8	SM1302.V2-08	Bolt M8 x 25mm
9	SM1302.V2-09	Base
10	SM1302.V2-10	Bolt M6 x 20mm
11	SM1302.V2-11	Arm Housing Set
12	SM1302.V2-12	Support Table
13	SM1302.V2-13	Scale Indicator
14	MSP612.S	Machine Screw Pan Head Phillips M6 x 12mm
15	SM1302.V2-15	Bevel Scale
16	SWM5.S	Spring Washer M5
17	SM1302.V2-17	Spring
18	FWM6.S	Flat Washer M6
19	SM1302.V2-19	Hex Head Bolt M6 x 40mm
20	SM1302.V2-20	Spring
21	SM1302.V2-21	Bolt Tension
22	SM1302.V2-22	Arm Lower
23	SWM4.S	Spring Washer M4
24	SS410.S	Hex Head Set Screw M4 x 10mm
25	SM1302.V2-25	Bearing Flange
27	SM1302.V2-27	Bolt M6 x 25mm
28	SM1302.V2-28	Retainer
29	SM1302.V2-29	Arm Upper
30	SN5.S	Hex Nut M5
31	SM1302.V2-31	Hex Head Screw M5 x 20mm
32	B/625ZZ	Bearing 625ZZ
33	SM1302.V2-33	Large Washer
34	SM1302.V2-34	Link
35	SM1302.V2-35	Hex Key 4 x 65mm Black
36	SM1302.V2-36	Strain Relief
37	SM1302.V2-37	Blade Holder
38	SM1302.V2-38	Hex Head Screw M5 x 25mm
39	FWM4.S	Flat Washer M4
40	SM1302.V2-40	Plate Chip
41	SM1302.V2-41	Pan Head Screw ST4.2 x 10mm
42	SS416.S	Hex Head Set Screw M4 x 16mm

Item	Part No.	Description
43	SM1302.V2-43	Table Insert
44	SM1302.V2-44	Knob, Table Locking Ø34mm, M5x13mm Threaded (M)
45	SM1302.V2-45	Blade
46	SM1302.V2-46	Pan Head Screw M4 x 16mm
47	SM1302.V2-47	Drop Foot
48	SM1302.V2-48	Tooth Washer M5
50	SM1302.V2-50	Fixing Plate for Switch
51	SM1302.V2-51	Motor (Internal 230V 130W)
52	SM1302.V2-52	Eccentric
53	SM1302.V2-53	Table
54	SM1302.V2-54	Hex Head Bolt M6 x 35mm
55	SM1302.V2-55	Sawdust Blower
56	SM1302.V2-56	Adjustment Level
57	SM1302.V2-57	Bellows Locks
58	SM1302.V2-58	Bellows
59	TS10SEW.121	M4 Ext Tooth Washer
60	SM1302.V2-60	Set Screws M8 x 8mm
61	SM1302.V2-61	Pan Head Screw ST4.2 x 8mm
62	SM1302.V2-62	Hex Nut
63	SM1302.V2-63	PCB, Circuit Board, 85 x 63mm
64	MSP46.S	Machine Screw Pan Head Phillips M4 x 6mm
65	MSP535.S	Machine Screw Pan Head Phillips M5 x 35mm
66	MSP530.S	Machine Screw Pan Head Phillips M5 x 30mm
68	SM1302.V2-68	Knob, Plastic Ø31 x 32mm, M6 x 16mm Threaded (M)
69	SM1302.V2-69	Bearing Retainer
70	SM1302.V2-70	Set Plate
71	SM1302.V2-71	Housing for Switch
72	SM1302.V2-72	On/off Switch, Press Button 6A 250V
74	SM1302.V2-74	Screw ST4.2 x 13mm
75	SM1302.V2-75	Back Plate Cover
76	SM1302.V2-76	Hex Key 3 x 66mm Black, T-Handle
78	SM1302.V2-78	Blade Guard
79	FWM5.S	Flat Washer M5
80	MSP58.S	Machine Screw Pan Head Phillips M5 x 8mm
81	SM1302.V2-81	Knob, Speed Adjust, Plastic Ø28mm, 6mm (F)
82	SM1302.V2-82	Relay
83	SM1302.V2-83	Carbon Brush (Pair)
84	SM1302.V2-84	Carbon Brush Cover

**NOTE:** It is our policy to continually improve products and as such we reserve the right to alter data, specifications and component parts without prior notice. There may be alternative versions of this product, please contact us should you require this information.

**IMPORTANT:** No liability is accepted for incorrect use of product. Spare parts must be fitted by a competent person

**WARRANTY:** Guarantee is 12 months from purchase date, proof of which will be required for any claim.

**Jack Sealey Ltd t/a Sealey Group**, Kempson Way, Suffolk Business Park, Bury St Edmunds, Suffolk, IP32 7AR UK  
**Jack Sealey (EU) Ltd t/a Sealey Group**, Farney Street, Carrickmacross, Co. Monaghan, A81 PK68 Ireland  
**Tel:** 01284 757500 • **Email:** sales@sealey.co.uk • **Web:** www.sealey.co.uk



TM

Parts Information:  
**Variable Speed Scroll Saw 406mm Throat  
230V  
Model No: SM1302.V2**

Item	Part No.	Description
85	SWM10.S	Spring Washer M10
86	SM1302.V2-86	Ring
87	SM1302.V2-87	Lamp Cover
88	SM1302.V2-88	Socket
89	SM1302.V2-89	Tube
90	SM1302.V2-90	Nylon Tube

Item	Part No.	Description
91	SM1302.V2-91	Pipe
92	SM1302.V2-92	Connection Assembly
93	SM1302.V2-93	Spring Washer
94	SN10.S	Steel Nut M10
95	SM1302.V2-95	Power Cord and Plug

**NOTE:** It is our policy to continually improve products and as such we reserve the right to alter data, specifications and component parts without prior notice. There may be alternative versions of this product, please contact us should you require this information.

**IMPORTANT:** No liability is accepted for incorrect use of product. Spare parts must be fitted by a competent person

**WARRANTY:** Guarantee is 12 months from purchase date, proof of which will be required for any claim.

**Jack Sealey Ltd t/a Sealey Group**, Kempson Way, Suffolk Business Park, Bury St Edmunds, Suffolk, IP32 7AR UK

**Jack Sealey (EU) Ltd t/a Sealey Group**, Farney Street, Carrickmacross, Co. Monaghan, A81 PK68 Ireland

**Tel:** 01284 757500 • **Email:** sales@sealey.co.uk • **Web:** www.sealey.co.uk