

TROUBLESHOOTING

a. The thermal circuit breaker cuts in as the motor has overheated.	1. The water level is too low. 2. Intake blocked, impeller jammed. 3. Temperature of inlet water exceeds 35°C.	1. Sink the pump deeper, or allow to cool before continuing use. 2. Check and clean. 3. Reduce water temperature. Allow the pump to cool for approx 25minutes before restarting.
b. Motor operates but there is no flow.	1. Water level below min suction depth. 2. Air bubbles in pump accumulated during submersion, or because float is incorrectly positioned so pump does not stop at minimum level and sucks in air. 3. Clogged intake filter or discharge pipe.	1. Stop the pump. 2. Release air by inclining the pump and re-immersing it in water. 3. Remove blockage and clean the unit.
c. Reduced flow for level of water.	1. Discharge pipe bent, or pinched. 2. Discharge pipe too narrow. 3. Pump partially blocked.	1. Straighten pipe. 2. Use larger diameter pipe. 3. Clean pump.
d. The pump will not start or suddenly stops during operation.	1. No electrical power. 2. Float switch fault. 3. Circuit breaker has triggered. 4. Impeller is jammed.	1. Check cable, plug and fuse. 2. Contact authorised service agent. 3. See (a) above. 4. Clean the pump.

5. DECLARATION OF CONFORMITY

Declaration of Conformity We, the sole importer into the UK, declare that the product listed below is in conformity with the following standards and directives.

SUBMERSIBLE WATER PUMP
Model: **SDW50A**

73/23/EEC Low Voltage Directive
89/336/EEC EMC Directive



The construction file for this product is held by the Manufacturer and may be inspected, by a national authority, upon request to Jack Sealey Ltd.

Signed by Mark Sweetman

4th September 2002

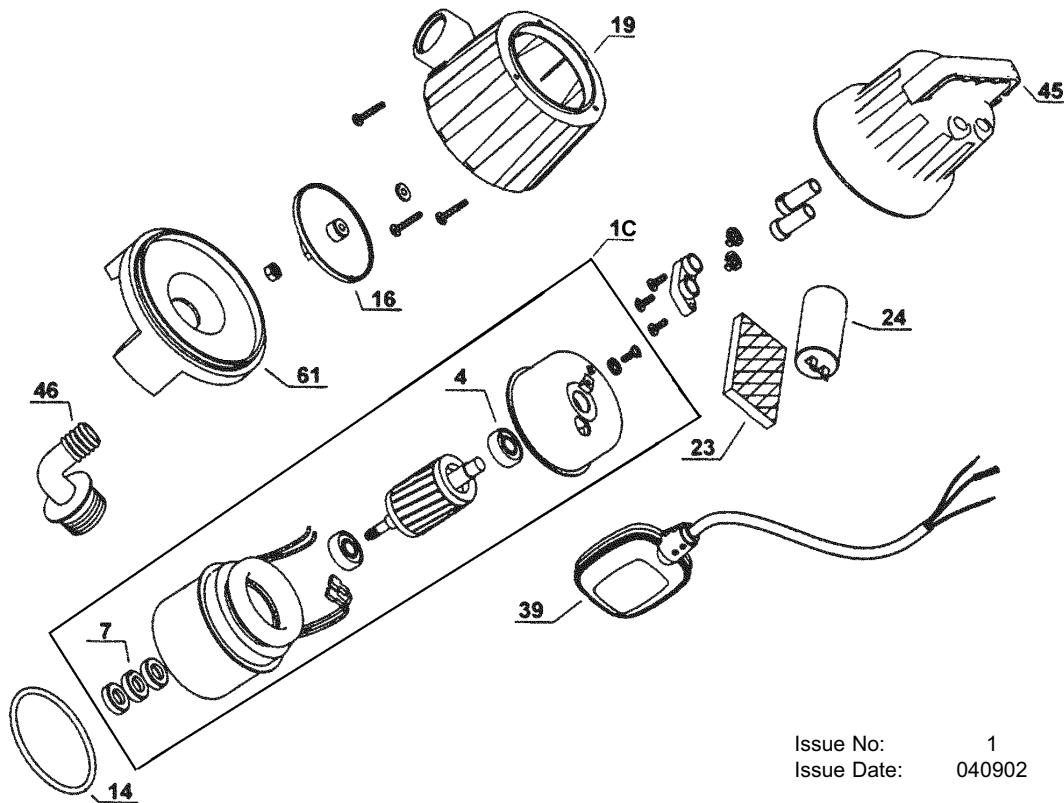
For Jack Sealey Ltd.
Sole importer into the UK
of Sealey Power Products.

NOTE: It is our policy to continually improve products and as such we reserve the right to alter data, specifications and component parts without prior notice.

IMPORTANT: No liability is accepted for incorrect use of product. **WARRANTY:** Guarantee is 12 months from purchase date, proof of which will be required for any claim. **INFORMATION:** For a copy of our latest catalogue and promotions call us on 01284 757525 and leave your full name and address, including postcode.



PARTS LIST FOR: WATER PUMP MODEL: SDW50A



Issue No: 1
Issue Date: 040902

Item	Part No.	Description	Item	Part No.	Description
1C	EL3001C	Complete Motor	23	EL10023	Sponge
4	EL10004	Bearing	24	EL10024	Capacitor
7	EL10007	Oil Seal	39	EL10039	Switch
14	EL1014E	O-ring	45	EL10045	Upper Body
16	EL40016	Impeller	46	EL10046	Connector
19	EL20019	Pump Body	61	EL50061	Suction Base

NOTE: It is our policy to continually improve products and as such we reserve the right to alter data, specifications and component parts without prior notice.

SEALEY POWER PRODUCTS Sole UK Distributor,
Sealey Group, Bury St. Edmunds, Suffolk.

01284 757500

01284 703534

sales@sealey.co.uk

www.sealey.co.uk