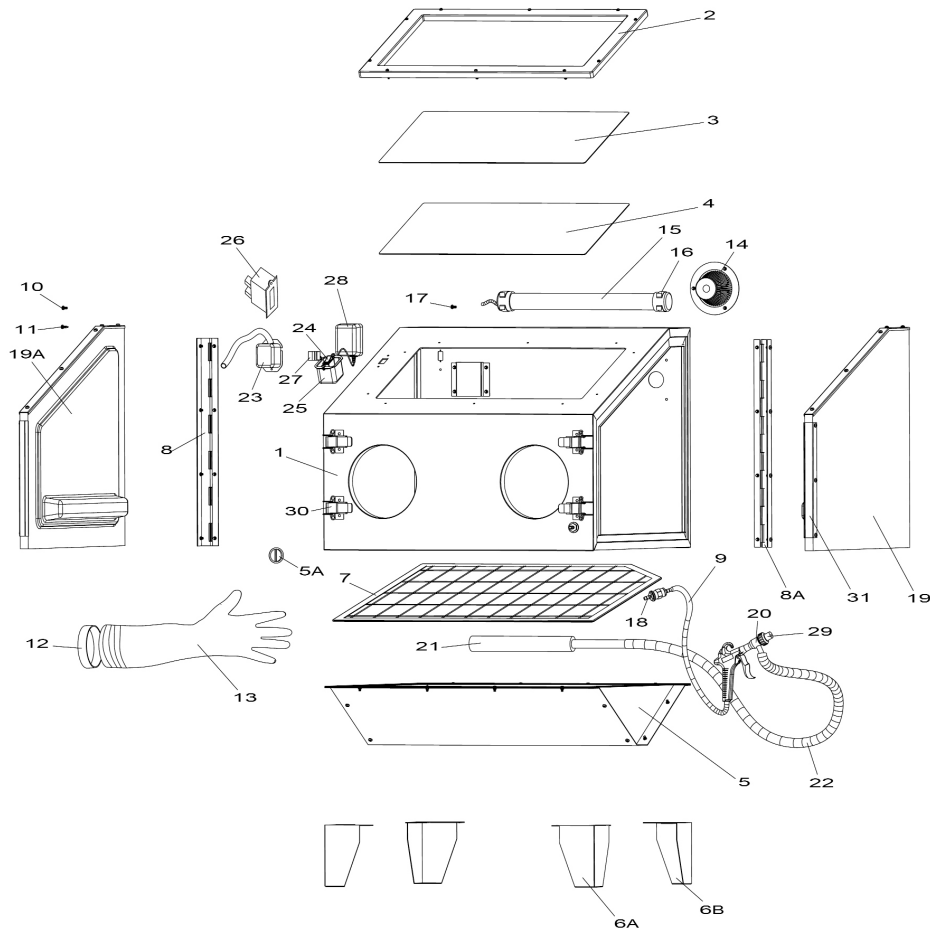


Parts Information:
Shot Blasting Cabinet Double Access 695 x 580 x 625mm
Model No: SB970.V3



Item	Part No.	Description
1	SB970.V3-01	CABINET
2	SB970.V3-02	FRAME
3	SB970.V3-03	ORGANIC GLASS
4	SB970.V3-04	PROTECTIVE FILM
5	SB970.V3-05	BASE
5A	SB970.V3-05A	PLUG
6A	SB970.V3-06A	RIGHT FRONT/LEFT REAR LEG
6B	SB970.V3-06B	LEFT FRONT/RIGHT REAR LEG
7	SB970.V3-07	MESH
8	SB970.V3-08	HINGE
8A	SB970.V3-08	HINGE
9	SB970.V3-09	AIR INLET TUBE
10	SB970.V3-10	SCREW
11	SB970.V3-11	RD HEAD S/T SCREW M4.8 X 16
12	SB970.V3-12	CLAMP
13	SB970.V3-13	GLOVES (PAIR)
14	SB970.V3-14	FILTER
15	SB970.V3-15	LAMP

Item	Part No.	Description
16	SB974.V3-17	CLAMP
17	SB970.V3-17	SCREW
18	SB970.V3-18	CONNECTOR
19	SB970.V3-19	RIGHT DOOR
19A	SB970.V3-19A	LEFT DOOR
20	SB974.V3-23	SANDING GUN
21	SB970.V3-21	INPUT PIPE
22	SB970.V3-22	INPUT HOSE
23	SB970.V3-25	SOCKET HOUSING 'B'
24	SB970.V3-24	SWITCH
25	SB970.V3-25	SOCKET HOUSING 'B'
26	SB974.V3-20	SOCKET
27	SB974.V3-32	PLUG
28	SB974.V3-31	TRANSFORMER (3-PIN)
29	SB974.V3-23-1	SANDING GUN NOZZLE (PK OF 4)
30	SB974.V3-21	LOCK
31	SB970.V3-31	DOOR PLATE

NOTE: It is our policy to continually improve products and as such we reserve the right to alter data, specifications and component parts without prior notice.

IMPORTANT: No liability is accepted for incorrect use of product.

WARRANTY: Guarantee is 12 months from purchase date, proof of which will be required for any claim.