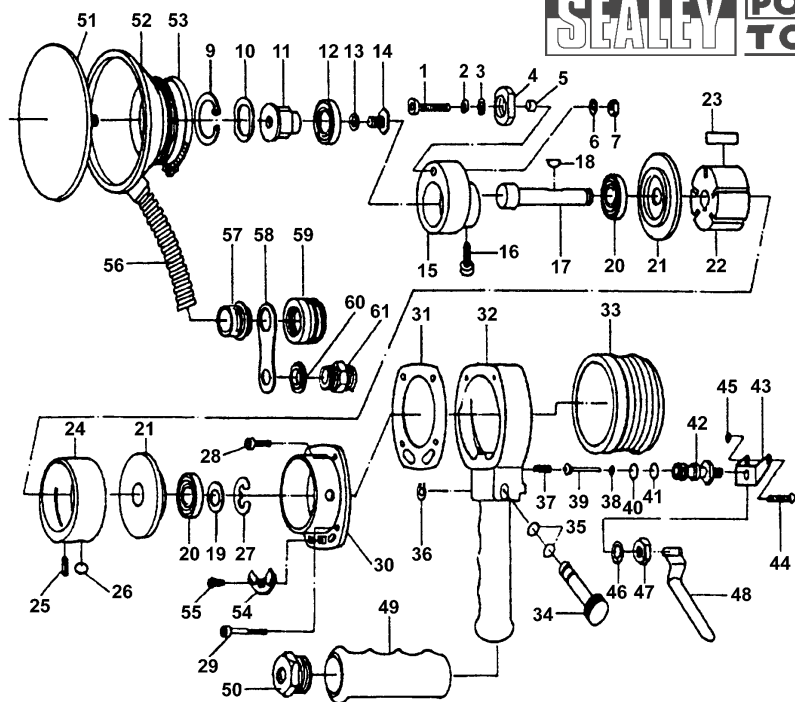


# AIR OPERATED RANDOM ORBITAL SANDER

Model: **SA7/SAS**

Thank you for purchasing a Sealey Product. Manufactured to a high standard this product will, if used according to these instructions and properly maintained, give you years of trouble free performance.

**IMPORTANT:** PLEASE READ THESE INSTRUCTIONS CAREFULLY. NOTE THE SAFE OPERATIONAL REQUIREMENTS, WARNINGS AND CAUTIONS. USE THIS PRODUCT CORRECTLY AND WITH CARE FOR THE PURPOSE FOR WHICH IT IS INTENDED. FAILURE TO DO SO MAY CAUSE DAMAGE AND/ OR PERSONAL INJURY AND WILL INVALIDATE THE WARRANTY. PLEASE KEEP INSTRUCTIONS SAFE FOR FUTURE USE.



## 1. SAFETY INSTRUCTIONS

### 1.1. Operational Safety

- WARNING!** Ensure Health & Safety, local authority, and general workshop practice regulations are adhered to when using this equipment.
- WARNING!** Disconnect from air supply before changing accessories or servicing.
- Maintain the sander in good condition (use an authorised service agent).
- Replace or repair damaged parts. Use genuine parts only. Non-authorised parts may be dangerous and will invalidate the warranty.
- Use in suitable clean and tidy work area, free from unrelated materials and ensure there is adequate lighting.
- Before each use check abrasive pads for condition. If worn or damaged replace immediately.
- Ensure the abrasive pad rating is the same as, or greater than the RPM rating of the sander.
- Ensure there are no flammable or combustible materials near the work area.
- WARNING!** Always wear approved eye or face and hand protection when operating the sander.
- Use face, dust, or respiratory protection in accordance with COSHH regulations.
- Depending on the task, sander noise level may exceed 85dB, in which case wear safety ear defenders.
- Remove ill fitting clothing. Remove ties, watches, rings, other loose jewellery and contain and/or tie back long hair.
- Wear appropriate protective clothing and keep hands and body clear of working parts.
- Maintain correct balance and footing. Ensure the floor is not slippery and wear non-slip shoes.
- Keep children and unauthorised persons away from the work area.
- Check moving parts alignment on a regular basis.
- Ensure workpiece is secure before operating the sander. Never hold a workpiece by hand.
- Check the workpiece to ensure there are no protruding screws, bolts, nuts, nails, stones, etc.
- Avoid unintentional starting.
- WARNING!** Ensure correct air pressure is maintained and not exceeded. Recommended pressure 70-90psi.
- Keep air hose away from heat, oil and sharp edges. Check air hose for wear before each use and ensure that all connections are secure.
- Prolonged exposure to vibration from this sander poses a health risk. It is the owner's responsibility to correctly assess the potential hazard and issue guidelines for safe periods of use and offer suitable protective equipment.
- DO NOT use the sander for a task it is not designed to perform.
- DO NOT operate sander if any parts are damaged or missing as this may cause failure and/or personal injury.
- DO NOT use cloth backed sanding pads. Use only appropriate paper adhesive pads, following pad instructions.
- WARNING!** DO NOT sand any materials containing asbestos.
- DO NOT carry the sander by the hose, or yank the hose from the air supply.
- DO NOT force, or apply heavy pressure to the sander, let the sander do the work.
- DO NOT place attachments close to your face and do not point at other persons or animals.
- DO NOT operate sander when you are tired, under the influence of alcohol, drugs or intoxicating medication.
- DO NOT use sander where there are flammable liquids, solids or gases such as paint solvents and including waste wiping or cleaning rags etc.
- DO NOT carry the sander with your finger on the power lever.
- DO NOT direct air from the air hose at yourself or others.
- When not in use disconnect from air supply and store in a safe, dry, childproof location.

Item	Part No.	Description	Item	Part No.	Description
1	SA7S/01	Screw	24	SA7S/24	Cylinder
2	SA7S/02	Flat Washer	25	SA7S/25	Locating Pin
3	SA7S/03	Wave Washer	26	SA7S/26	O-Ring
4	SA7S/04	Spindle Lock	27	SA7S/27	Retaining Ring
5	SA7S/05	Spacer	28	SA7S/28	Cap Screw (S)
6	SA7S/06	Wave Washer	29	SA7S/29	Cap Screw (L)
7	SA7S/07	Hex. Nut	30	SA7SAS/30	Drive H'sing, Dust Free
9	SA7S/09	Retaining Ring	31	SA7SAS/31	Gasket, Dust Free
10	SA7S/10	Wave Washer	32	SA7S/32	Motor Housing
11	SA7S/11	Drive Spindle	33	SA7S/33	Housing Cover
12	SA7S/12	B/6201ZZ Bearing	34	SA7S/34	Valve - Speed Reg.
13	SA7S/13	Wave Washer	35	SA7S/35	O-Ring
14	SA7S/14	Front Screw	36	SA7S/36	Retaining Ring
15	SA7S/15	Orbital Hub	37	SA7S/37	Throttle Valve Spring
16	SA7S/16	Socket Screw	38	SA7S/38	O-Ring
17	SA7S/17	Rotor Shaft	39	SA7S/39	Valve Stem
18	SA7S/18	Key	40	SA7S/40	O-Ring
19	SA7S/19	Wave Washer	41	SA7S/41	O-Ring
20	SA7S/20	B/6200Z Bearing	42	SA7S/42	Valve Body
21	SA7S/21	End Plate	43	SA7S/43	Bracket
22	SA7S/22	Rotor	44	SA7S/44	Hinge Screw
23	SA7S/23	Rotor Blade [9mm]	45	SA7S/45	Hex. Nut
			46	SA7S/46	Lock Washer
			47	SA7S/47	Hex. Nut
			48	SA7S/48	Throttle Lever
			49	SA7S/49	Handle Cover
			50	SA7S/50	Hose Adaptor
			51	SA7SAS/51	Backing Disc (not supplied)
			52	SA7SAS/52	Suction Cover
			53	SA7SAS/53	Suction Cover Clamp
			54	SA7SAS/54	Exhaust Deflector
			55	SA7SAS/55	Screw
			56	SA7SAS/56	Suction Hose
			57	SA7SAS/57	Suction Hose Adaptor
			58	SA7SAS/58	Set Plate
			59	SA7SAS/59	Suction Joint
			60	SA7SAS/60	Washer
			61	SA7SAS/61	Nipple

Original Date: 180900  
Issue Date: 180900  
Issue No: 1  
Date Modified: 1st issue

**NOTE:** It is our policy to continually improve products and as such we reserve the right to alter data, specifications and component parts without prior notice. **IMPORTANT:** No liability is accepted for incorrect use of this equipment. **WARRANTY:** Guarantee is 12 months from purchase date, proof of which will be required for any claim. **INFORMATION:** For a copy of our latest catalogue and promotions call us on 01284 757525 and leave your full name and address, including postcode.



### 1.2. LEAD PAINT WARNING!

Paint once contained lead as a traditional ingredient. The dust caused by the removal of such paint is toxic and must therefore be avoided. The following action must be taken before using the sander on a surface that you suspect may contain lead paint.

1. User must determine potential hazard relating to age of paint to be removed (modern paints do not have lead content).
2. **DANGER!** Keep all persons and pets away from the working area. The following persons are particularly vulnerable to the effects of lead paint dust: *Expectant women, babies and children.*
3. We recommend personal protection by using the following safety items:
  - a) Paint Spray Respirator (Our ref SSP16EN)
  - b) PE Coated Hooded Coverall (Our ref SSP266).
  - c) Latex Gloves (Our ref SSP24).
4. Take adequate measures to contain the paint dust, flakes and scrapings.
5. Continue to wear safety equipment as in (3) above and thoroughly clean all areas when task is complete. Ensure paint waste is disposed of in sealed bags or containers.

## 2. INTRODUCTION & SPECIFICATION

The SA7/SAS has a light weight aluminium body with a smooth double bearing counter balance assembly for fatigue-free operation and an air diversion system to maximize dust extraction.

Pad Size . . . . .	.150mm	Extraction Outlet . . . . .	Ø28mm
Thread Size . . . . .	.5/16" UNF	Sound . . . . .	.93.3dB(A)
Free Speed . . . . .	.10000rpm		92.8dB(C)
Operating Pressure . . . . .	.90psi	Vibration . . . . .	<2.5m/s <sup>2</sup>
Air Consumption . . . . .	.10.6cfm	Weight . . . . .	.2kg
Air Inlet . . . . .	.1/4"BSP		

## 3. PREPARING SANDER FOR USE

### 3.1. Assembly

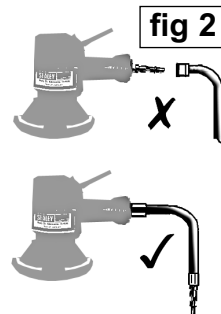
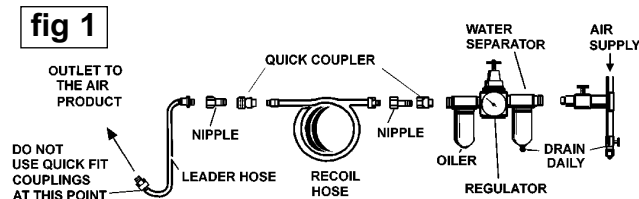
- 3.1.1. Fit suction cover (item 52 in parts list) over drive housing (item 30) and retain with clamp (item 53).
- 3.1.2. Attach plate (item 58) on hose to end of sander handle using washer and nipple (items 60 & 61) supplied.
- 3.1.3. Connect suction outlet (item 59) to dust extraction system.

### 3.2. Air Supply

- 3.2.1. Ensure the sander air valve (or throttle) is in the "Off" position before connecting to the air supply.
- 3.2.2. You will require an air pressure between 70-90psi, and an air flow according to the specification above.
- 3.2.3. **WARNING!** Ensure the air supply is clean and does not exceed 90 psi while operating the sander. Too high an air pressure and/or unclean air will shorten the product life due to excessive wear, and may be dangerous causing damage and/or personal injury.
- 3.2.4. Drain the air tank daily. Water in the air line will damage the sander **and will invalidate your warranty.**
- 3.2.5. Clean air inlet filter weekly. Recommended hook-up procedure is shown in fig 1.
- 3.2.6. Line pressure should be increased to compensate for unusually long air hoses (over 8 metres). The minimum hose diameter should be 1/4" I.D. and fittings must have the same inside dimensions.
- 3.2.7. Keep hose away from heat, oil and sharp edges. Check hoses for wear and make certain that all connections are secure.

### 3.3. Couplings

Vibration may cause failure if a quick change coupling is connected directly to the air sander. To overcome this, connect a leader hose to the sander. A quick change coupling may then be used to connect the leader hose to the air line recoil hose. See figs 1 & 2.



## 4. OPERATING INSTRUCTIONS

**WARNING! Ensure you read, understand and apply the safety instructions in Section 1 before use.**

### 4.1. Assembly

- 4.1.1. Fit appropriate backing disc and sanding pad. Use only pads with speed ratings equal to or higher than the speed rating of the sander. DO NOT use cloth backed sanding pads.
- 4.1.2. Connect air supply to sander, press the control valve lever and check that the sander is working correctly.
- 4.1.3. The air flow may be regulated by turning the control knob on the side of the handle.

### 4.2. Operating

The sander is designed to provide a combined "rotary" and "random orbit" action.

Always use a grit pad appropriate for the job. Work progressively from coarse grades to finer grades. DO NOT go from coarse to fine in one step as it may be difficult to remove swirl marks left by the coarse grit. DO NOT apply excessive pressure, let the sander do the work for you. Start the sander and bring the sanding disc to the work surface evenly and slowly. Move the sander back and forth in overlapping areas. Remove the sanding disc from the work surface before stopping the sander. Regularly check the sanding pad for wear, always changed a cracked or damaged pad.

DO NOT allow sander to run in "idle rotation" for an extended period of time as this will shorten life of bearings.

## 5. MAINTENANCE

**WARNING!** Disconnect sander from air supply before changing accessories, servicing or performing maintenance. Replace or repair damaged parts. *Use genuine parts only. Non-authorized parts may be dangerous and will invalidate the warranty.*

- 5.1. Lubricate the air sander daily with a few drops of good grade air tool oil such as Sealey ATO/500 or ATO1000, dripped into the air inlet before use.
- 5.2. Clean the sander after use and change pads when required.
- 5.3. Loss of power or erratic action may be due to the following:
  - a) Excessive drain on the air line. Moisture or restriction in the air pipe. Incorrect size or type of hose connectors. To remedy check the air supply and follow instructions in Section 3.
  - b) Grit or gum deposits in the sander may also reduce performance. If your model has an air strainer (located in the area of the air inlet), remove the strainer and clean it. Flush the sander out with gum solvent oil or an equal mixture of SAE No 10 oil and kerosene. Allow to dry before use.

If you continue to experience problems, contact your local Sealey service agent.
- 5.4. For a full service contact your local Sealey service agent.
- 5.5. When not in use, disconnect from air supply, clean sander and store in a safe, dry, childproof location.

## Declaration of Conformity



We, the sole importer into the UK, declare that the product listed here is in conformity with the following standards and directives. The construction file for this product is held by the manufacturer and may be inspected, by a national authority, upon request to Jack Sealey Ltd.

**Air Operated Random Orbital Sander**

**Model: SA7/SAS**

98/37/EC Machinery Directive  
93/68/EEC Marking Directive

Signed by Mark Sweetman

18th September 2000

For Jack Sealey Ltd. Sole importer into the UK of Sealey Power Tools.