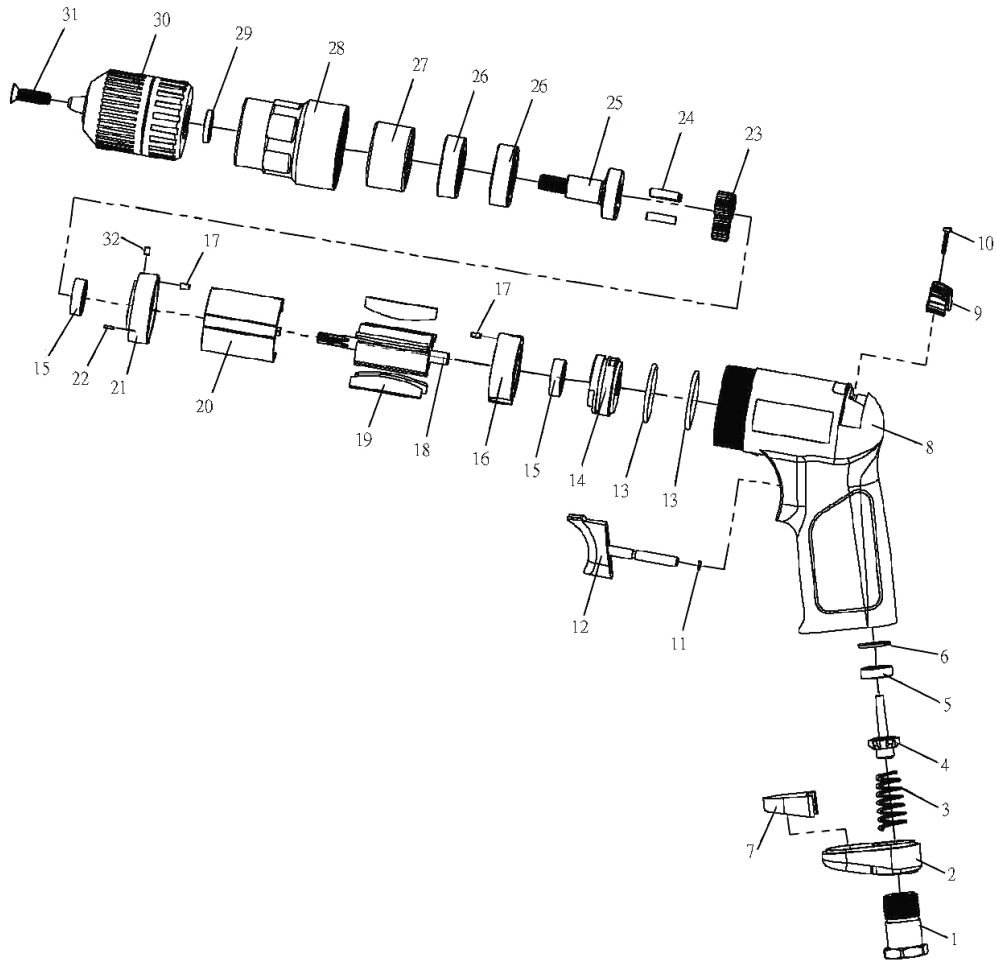




Parts Information:  
**Air Screwdriver Adjustable Clutch Straight  
 Type**  
**Model No: SA620.V2**



Item	Part No.	Description
1	SA621V2-01	INLET BUSHING
2	SA621V2-02	DEFLECTOR
3	SA621V2-03	VALVE SPRING
4	SA621V2-04	VALVE
5	SA621V2-05	VALVE SEAT
6	SA621V2-06	SPACER
7	SA620.V2-07	SILENCER
8	SA621V2-08	HOUSING
9	SA621V2-09	REVERSE VALVE LEVER
10	SA621V2-10	TAPING SCREW (2.3x12)
11	SA621V2-11	O-RING (3x1)
12	SA621V2-12	TRIGGER
13	SA621V2-13	O-RING (27 x 2)
14	SA621V2-14	VALVE BODY
15	B/626	BEARING 626
16	SA621V2-16	REAR PLATE
17	SA621V2-17	SPRING PIN

Item	Part No.	Description
18	SA621V2-18	ROTOR
19	SA621V2-19	ROTOR BLADE (SET OF 5)
20	SA621V2-20	CYLINDER
21	SA621V2-21	FRONT PLATE
22	SA621V2-23	PIN (1.5x4.8)
23	SA620.V2-23	IDLE GEAR
24	SA620.V2-24	PIN (4X15.6)
25	SA620.V2-25	WORK SPINDLE
26	B/6201ZZ	BEARING 6201ZZ
27	SA620.V2-27	RING GEAR
28	SA620.V2-28	FRONT HOUSING
29	SA95.V3-02	SPACER
30	DC/J-38HC	DRILL CHUCK KEYLESS 3/8" X 24
31	MSCS520.SB	CSK SOCKET MACHINE SCREW M5x20 BLACK
32	SA656.12	SPRING PIN (2.5x4)
--	SA620.V2-33	KEY (NOT SHOWN)

**NOTE:** It is our policy to continually improve products and as such we reserve the right to alter data, specifications and component parts without prior notice.

**IMPORTANT:** No liability is accepted for incorrect use of product.

**WARRANTY:** Guarantee is 12 months from purchase date, proof of which will be required for any claim.

Sealey Group, Kempson Way, Suffolk Business Park, Bury St Edmunds, Suffolk. IP32 7AR



01284 757500



01284 703534



sales@sealey.co.uk



www.sealey.co.uk