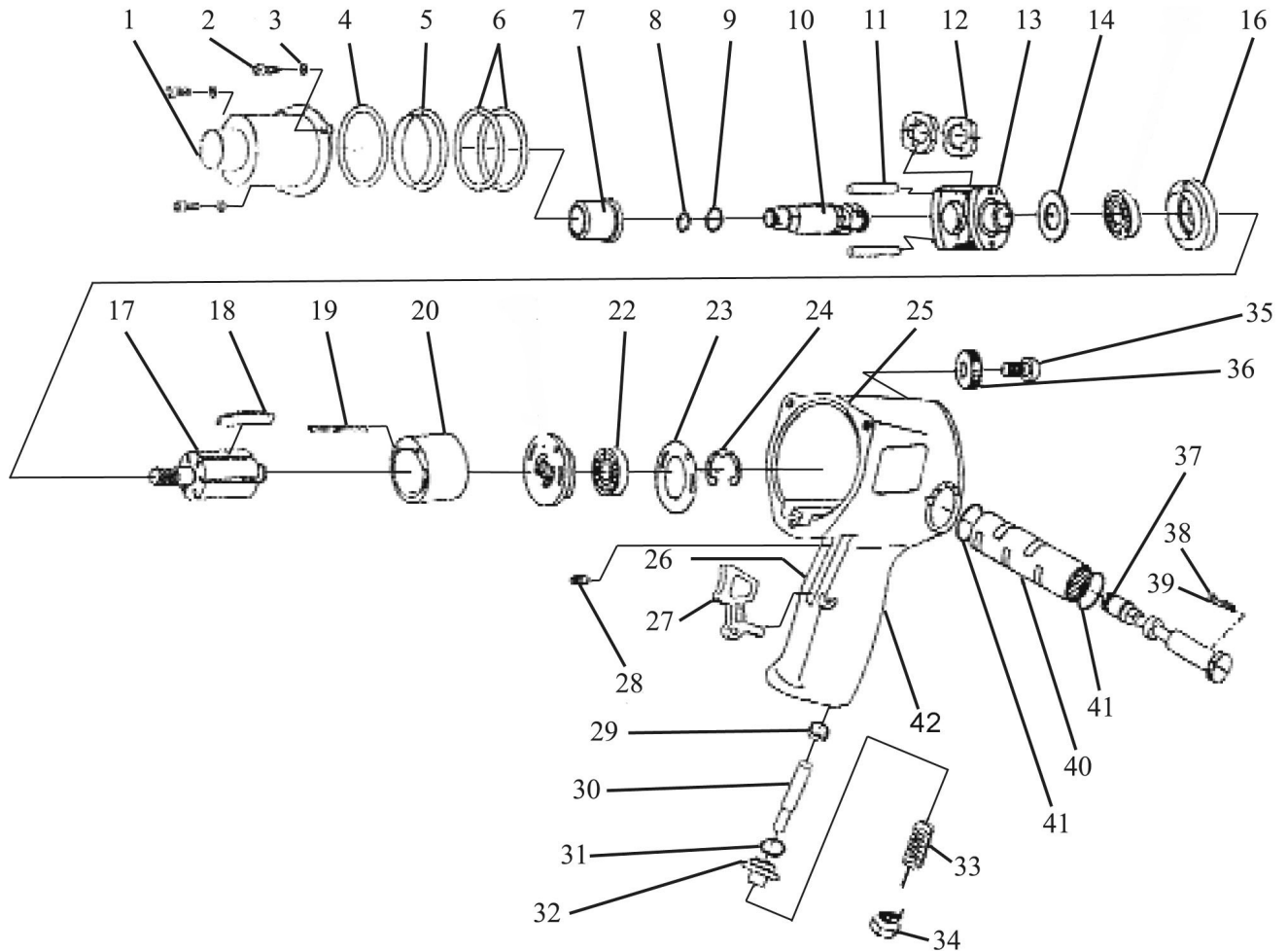




Parts Information:  
**Air Impact Wrench 1/2" Sq Drive Twin  
Hammer - Long Anvil  
Model No: SA602L**



**NOTE:** It is our policy to continually improve products and as such we reserve the right to alter data, specifications and component parts without prior notice.

**IMPORTANT:** No liability is accepted for incorrect use of product.

**WARRANTY:** Guarantee is 12 months from purchase date, proof of which will be required for any claim.

**Sealey Group**, Kempson Way, Suffolk Business Park, Bury St Edmunds, Suffolk. IP32 7AR



01284 757500



01284 703534



sales@sealey.co.uk



www.sealey.co.uk



Parts Information:  
Air Impact Wrench 1/2" Sq Drive Twin  
Hammer - Long Anvil  
Model No: SA602L

Item	Part No.	Description
1	SA602.V3-01	CLUTCH HOUSING (INCLUDES ANVIL BUSHING)
2	SA602.V3-02	SCREW
3	SWM5.SB	SPRING WASHER M5 BLACK (SINGLE)
4	SA602.V3-04	FRONT GASKET
5	SA602.V3-05	CLUTCH HOUSING PILOT
6	SA602.V3-06	MOTOR CLAMP WASHER
7	SA602.V3-07	DO NOT USE
8	SA602.V3-08	RETAINING RING
9	SA602.V3-09	O-RING
10	SA602L.10	ANVIL (LONG)
11	SA602.V3-11	HAMMER PIN
12	SA602.V3-12	HAMMER DOG
13	SA602.V3-13	HAMMER CAGE
14	SA602.V3-14	WASHER, HAMMER
16	SA602.V3-16	FRONT END PLATE
17	SA602.V3-17	ROTOR
18	SA602.V3-18	ROTOR BLADE
19	SA602.V3-19	LOCK PIN, CYLINDER
20	SA602.V3-20	CYLINDER
21	SA602.V3-21	REAR END PLATE

Item	Part No.	Description
23	SA602.V3-23	GASKET, REAR END PLATE
24	SA602.V3-24	E-RING
25	SA602.V3-25	MAIN HOUSING
26	SA602.V3-26	SPRING PIN
27	SA602.V3-27	TRIGGER
28	SA602.V3-28	SET SCREW
29	SA602.V3-29	THROTTLE BUSHING
30	SA602.V3-30	VALVE TAPPET
31	SA602.V3-31	O-RING
32	SA602.V3-32	VALVE STEM
33	SA602.V3-33	SPRING
34	SA602.V3-34	HOSE FITTING
35	BHSS612.SB	BUTTON HEAD SOCKET SCREW M6x12 BLACK
36	SA602.V3-36	RELEASE VALVE KNOB
37	SA602.V3-37	RELEASE VALVE
38	SB-3.2	STEEL BALL 3.2mm
39	SA602.V3-39	SPRING
40	SA602.V3-40	BUSHING, RELEASE VALVE
41	SA602.V3-41	O-RING
42	SA602.V3-42	MAIN HOUSING RUBBER SLEEVE

**NOTE:** It is our policy to continually improve products and as such we reserve the right to alter data, specifications and component parts without prior notice.

**IMPORTANT:** No liability is accepted for incorrect use of product.

**WARRANTY:** Guarantee is 12 months from purchase date, proof of which will be required for any claim.

Sealey Group, Kempson Way, Suffolk Business Park, Bury St Edmunds, Suffolk. IP32 7AR



01284 757500



01284 703534



sales@sealey.co.uk



www.sealey.co.uk