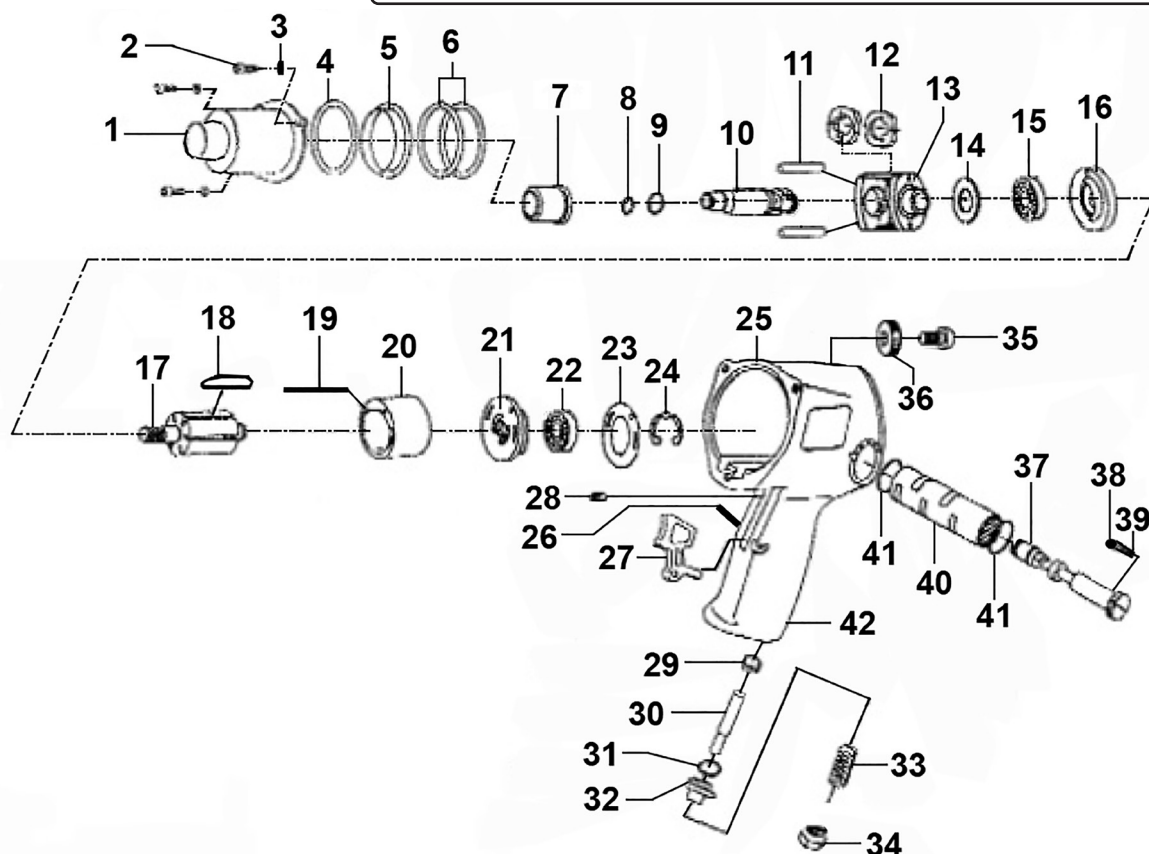


Parts Information: Premier Twin Hammer Air Impact Wrench 1/2" Sq Drive Model No: SA602.V4



| Item | Part No. | Description |
|------|-------------|---|
| 1 | SA602.V3-01 | Clutch Housing (Includes Anvil Bushing) |
| 2 | SCB518.SB | Socket Cap Bolt M5 x 18mm Black |
| 3 | SWM5.SB | Spring Washer M5 Black |
| 4 | SA602.V3-04 | Front Gasket |
| 5 | SA602.V3-05 | Clutch Housing Pilot |
| 6 | SA602.V3-06 | Motor Clamp Washer |
| 7 | SA602.V3-07 | Anvil Bushing |
| 8 | SA6006.17 | Socket Retainer |
| 9 | SA602.V3-09 | O-Ring, (Ex: 9.11 In: 4.93 Cs: 2.09) |
| 10 | SA602.V3-10 | Anvil |
| 11 | SA602.V3-11 | Hammer Pin |
| 12 | SA602.V3-12 | Hammer Dog |
| 13 | SA602.V3-13 | Hammer Cage |
| 14 | SA602.V3-14 | Washer, Hammer |
| 15 | B/6002ZZ | Bearing 6002ZZ |
| 16 | SA602.V3-16 | Front End Plate |
| 17 | SA602.V3-17 | Rotor |
| 18 | SA602.V3-18 | Rotor Blade |
| 19 | SA602.V3-19 | Lock Pin, Cylinder |
| 20 | SA602.V3-20 | Cylinder |
| 21 | SA602.V3-21 | Rear End Plate |

| Item | Part No. | Description |
|------|-------------|--|
| 22 | B/6001-2RS | Bearing 6001-2RS |
| 23 | SA602.V3-23 | Gasket, Rear End Plate |
| 24 | SA602.V3-24 | E-Clip 10mm ID |
| 25 | SA602.V3-25 | Main Housing |
| 26 | SA59.V3-42 | Spring Pin M4.2 X 18 |
| 27 | SA602.V3-27 | Trigger |
| 28 | GSM88.S | Grub Screw M8x8 (Single) |
| 29 | SA602.V3-29 | Throttle Bushing |
| 30 | SA602.V3-30 | Valve Tappet |
| 31 | SA602.V3-31 | O-Ring, (Ex: 11.71 In: 7.15 Cs: 2.28) |
| 32 | SA602.V3-32 | Valve Stem |
| 33 | SA602.V3-33 | Spring Dia 9.06mm |
| 34 | SA602.V3-34 | Hose Fitting |
| 35 | BHSS612.SB | Button Head Socket Screw M6 X 12 Black |
| 36 | SA602.V3-36 | Release Valve Knob |
| 37 | SA602.V3-37 | Release Valve |
| 38 | SB-3.2 | Steel Ball 3.2mm |
| 39 | SA602.V3-39 | Spring Dia 3mm |
| 40 | SA602.V3-40 | Bushing, Release Valve |
| 41 | SA342.12 | O-Ring, (Ex: 14.38 In: 10.82 Cs: 1.78) |
| 42 | SA602.V3-42 | Main Housing Rubber Sleeve |

NOTE: It is our policy to continually improve products and as such we reserve the right to alter data, specifications and component parts without prior notice. There may be alternative versions of this product, please contact us should you require this information.

IMPORTANT: No liability is accepted for incorrect use of product. Spare parts must be fitted by a competent person

WARRANTY: Guarantee is 12 months from purchase date, proof of which will be required for any claim.