

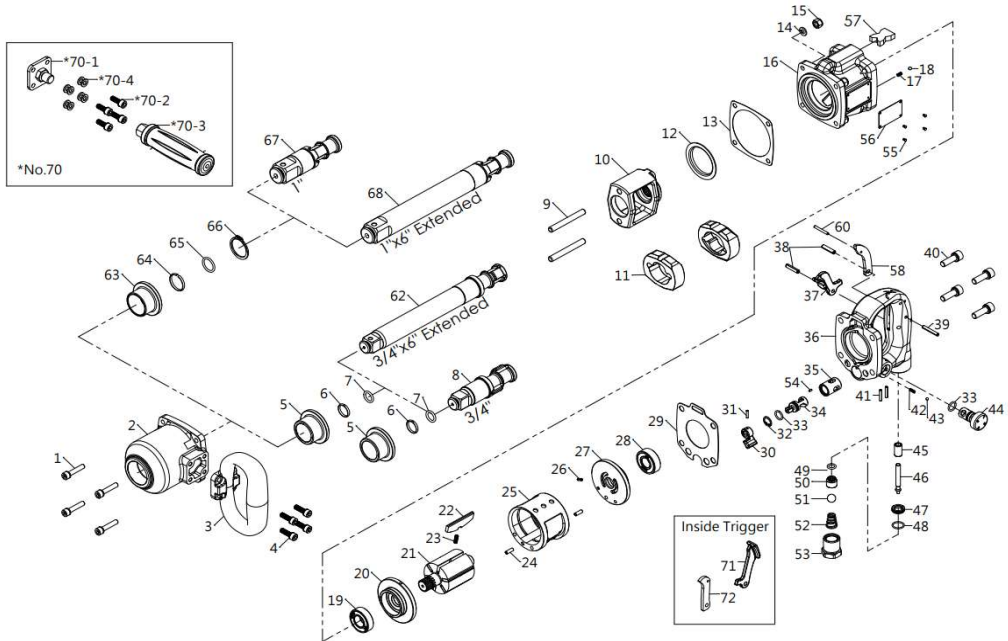
# Ultra Duty Impact Wrench

3/4" Sq. Drive

3/4" Sq. Drive x 6" Extended Anvil

1" Sq. Drive

1" Sq. Drive x 6" Extended Anvil



No.	Description	品名	Q'ty
1	Screw	有頭內六角螺絲附華司	4
2	Hammer Case	前套-黑鍍	1
3	Side Spade Handle	前提把-黑鍍漆	1
4	Screw	有頭內六角螺絲附華司	4
5	Anvil Bushing (3/4")	含油軸套(3/4"短)	1
6	Socket Retainer	防脫圈	1
7	O-Ring	O型環	1
8	Anvil (3/4")	3/4"傳動軸	1
9	Hammer Pin	鏈打室固定銷	2
10	Hammer Cage	鏈打室	1
11	Hammer Dog	鏈打塊	2
12	Hammer Washer	鏈打室墊圈	1
13	Gasket	前套墊片	1
14	Spring Washer	彈簧華司	4
15	Lock Nut	六角防鬆螺帽	4
16	Motor Housing	本體	1
17	Spring	旋控鈕彈簧	1
18	Steel Ball	鋼珠	1
19	Ball Bearing	軸承	1
20	Front End Plate	前蓋	1
21	Rotor	轉子	1
22	Rotor Blade	葉片	6
23	Spring	彈簧	6
24	Spring Pin	彈簧銷	2
25	Cylinder	氣缸	1
26	Spring Pin	彈簧銷	1
27	Rear End Plate	後蓋	1
28	Ball Bearing	軸承	1
29	Gasket	後前提把墊片	1
30	Reverse Valve	旋鈕	1
31	Spring Pin	彈簧銷	1
32	Snap Ring	C型扣環	1
33	O-Ring	O型環	2
34	Reverse Valve	旋控栓	1
35	Bushing	旋控栓襯套	1
36	Back Head	後前提把	1
37	Inside Trigger	內板機	1

No.	Description	品名	Q'ty
38	Pin	彈簧銷	2
39	Pin	彈簧銷	1
40	Screw	有頭內六角螺絲附華司	4
41	Spring Pin	彈簧銷	2
42	Spring	調速鈕彈簧	1
43	Steel Ball	鋼珠	1
44	Air Regulator	調速栓	1
45	Bushing	開閉銷襯套	1
46	Valve Tappet	開閉銷	1
47	Throttle Bushing	開閉銅襯	1
48	O-Ring	O型環	1
49	O-Ring	O型環	1
50	Valve Stem	開閉閥	1
51	Nylon Ball	軟尼龍球	1
52	Spring	喇叭彈簧	1
53	Hose Fitting	進氣口	1
54	Pin	平行銷	1
55	Rivet	銘牌鉚釘	4
56	Name Plate	銘銘牌	1
57	Muffler	消音棉	0.5
58	Plug (for Inside Trigger)	外板機封口板	1
60	Spring Pin	彈簧銷	1
62	Anvil (3/4" x 6" Extended)	3/4"傳動軸加長	1
63	Anvil Bushing (1")	含油軸套(1")	1
64	Socket Retainer	防脫圈	1
65	O-Ring	O型環	1
66	Retaining Ring	C型扣環	1
67	Anvil (1")	1"傳動軸	1
68	Anvil (1" x 6" Extended)	1"傳動軸加長	1
*70	Straight Handle Set	直提把總成	1
*70-1	Handle Base	直提把底座	1
*70-2	Screw	有頭內六角螺絲附華司	4
*70-3	Straight Handle	直把手	1
*70-4	Washer	平華司	8
71	Outside Trigger	外板機	1
72	Plug (for Outside Trigger)	內板機封口板	1

\*Option Parts

210,X28