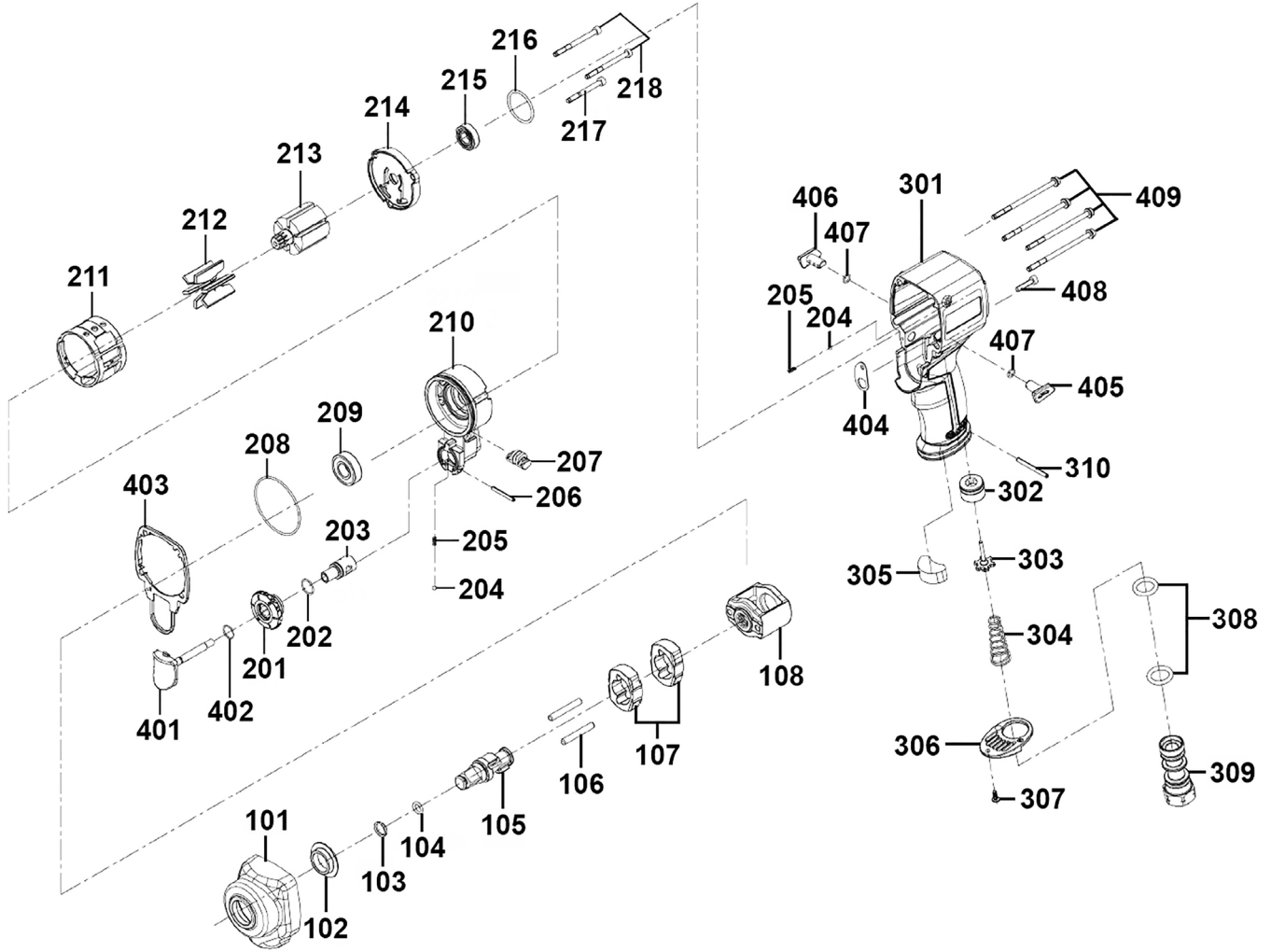




Parts Information:
Premier Twin Hammer Stubby Air Impact Wrench 1/2" Sq Drive
Model No: SA6002S.V2



Item	Part No.	Description
101	SA6002S.V2-101	Hammer Case
102	SA6002S.V2-102	Anvil Bushing
103	SA6002S.V2-103	Socket Retainer
104	GSA08.09-4	O-Ring (11.21 x 7.65 x 1.78mm)
105	SA6002S.V2-105	Anvil
106	SA6002S.V2-106	Hammer Pin
107	SA6002S.V2-107	Hammer
108	SA6002S.V2-108	Hammer Cage

Item	Part No.	Description
201	SA6005.V2-201	Regulator Assembly
202	SA6004.V2-202	O-Ring (10.10 x 8 x 1.05mm)
203	SA6004.V2-203	Regulator Stem
204	SB-2.5	Steel Ball 2.5mm
205	SA6005.V2-205	Spring Ø2.5mm
206	SA6005.V2-206	Spring Pin Ø2.7mm
207	SA6002S.V2-207	Reverse Stem
208	SA6002S.V2-208	O-Ring 44 x 1.5mm

NOTE: It is our policy to continually improve products and as such we reserve the right to alter data, specifications and component parts without prior notice. There may be alternative versions of this product, please contact us should you require this information.

IMPORTANT: No liability is accepted for incorrect use of product. Spare parts must be fitted by a competent person

WARRANTY: Guarantee is 12 months from purchase date, proof of which will be required for any claim.

Sealey Group, Kempson Way, Suffolk Business Park, Bury St Edmunds, Suffolk. IP32 7AR



01284 757500



sales@sealey.co.uk



www.sealey.co.uk



TM

Parts Information:
**Premier Twin Hammer Stubby Air Impact
Wrench 1/2" Sq Drive
Model No: SA6002S.V2**

Item	Part No.	Description
209	B/R8	Bearing R8
210	SA6002S.V2-210	Front End Plate Assembly
211	SA6002S.V2-211	Cylinder
212	SA6002S.V2-212	Rotor Blade
213	SA6002S.V2-213	Rotor
214	SA6002S.V2-214	Rear End Plate
215	B/R6	Bearing R6
216	SA6002S.V2-216	O-Ring 25 x 1.5mm
217	SCB432.SB	Socket Cap Bolt M4 x 32mm Black
218	SCB442.SB	Socket Head Cap Screw M4 x 42mm Black
301	SA6002S.V2-301	Housing Assembly (c/w Air Inlet Set)
302	SA6004.V2-302	Valve Seat Assembly
303	SA6004.V2-303	Valve Stem Assembly
304	SA6005.V2-304	Spring, Conical
305	SA6002S.V2-305	Muffler

Item	Part No.	Description
306	SA6004.V2-306	Exhaust Deflector
307	MSP38.SB	Machine Screw Pan Head Phillips M3 x 8mm Black
308	SA6004.V2-308	O-Ring (18.10 x 12.10 x 3mm)
309	SA6004.V2-309	Air Inlet
310	SA6002S.V2-310	Spring Pin 3 x 30mm
401	SA6004.V2-401	Trigger Assembly
402	SA6005.V2-402	O-Ring (5.00 x 3.50 x 0.75mm)
403	SA6002S.V2-403	Front End Plate Gasket
404	SA6004.V2-404	Gasket
405	SA6002S.V2-405	Reverse Button
406	SA6002S.V2-406	Forward Button
407	SA6004.V2-407	O-Ring (9.62 x 7.68 x 0.97mm)
408	SCB418.SB	Socket Cap Bolt M4 x 18mm Black
409	SCB467.SB	Socket Cap Bolt M4 x 67mm Black

NOTE: It is our policy to continually improve products and as such we reserve the right to alter data, specifications and component parts without prior notice. There may be alternative versions of this product, please contact us should you require this information.

IMPORTANT: No liability is accepted for incorrect use of product. Spare parts must be fitted by a competent person

WARRANTY: Guarantee is 12 months from purchase date, proof of which will be required for any claim.

Sealey Group, Kempson Way, Suffolk Business Park, Bury St Edmunds, Suffolk. IP32 7AR



01284 757500



sales@sealey.co.uk



www.sealey.co.uk