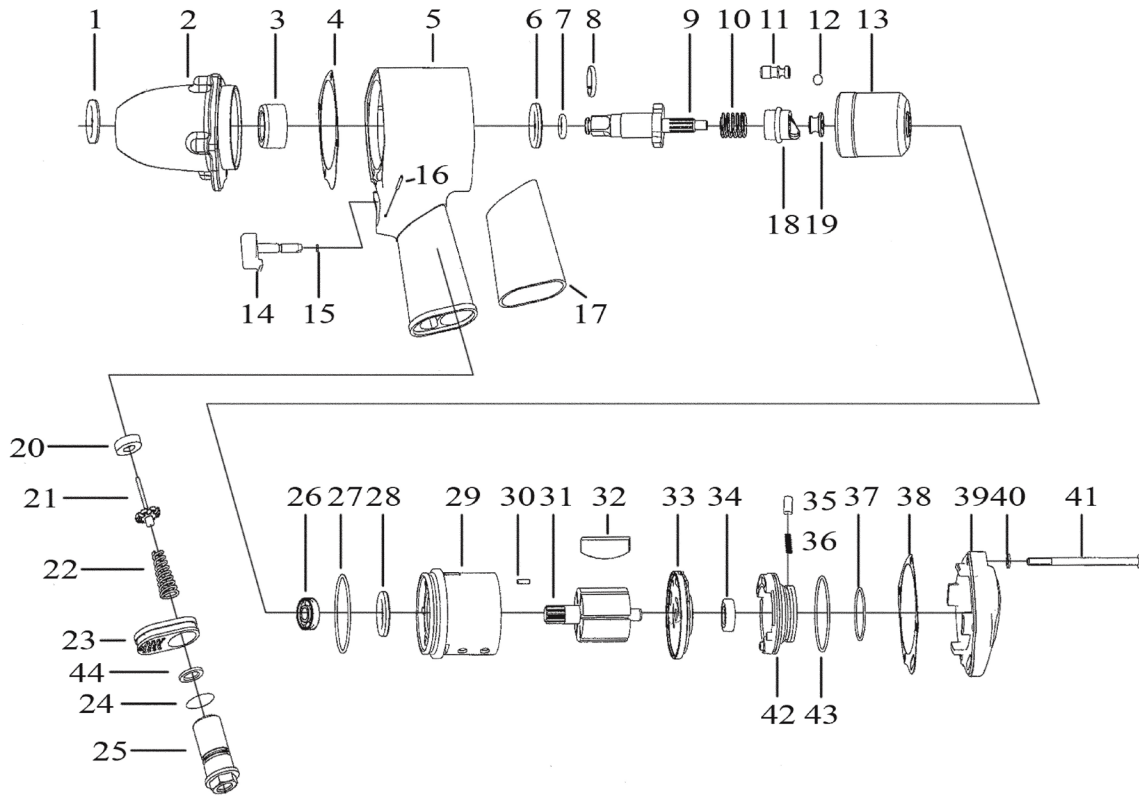




Parts Information:  
**Air Impact Wrench 1/2" Sq Drive Pin Clutch**  
**Model No: SA6001.V2**



Item	Part No.	Description
1	SA6001.01	OIL SEAL
2	SA6001.02	HAMMER CASE
3	SA6001.03	BUSHING
4	SA6002.04	FRONT GASKET
5	SA6002.05	MOTOR HOUSING
6	SA6001.06	SPACER
7	SA6001.07	O-RING
8	SA3S/18	ANVIL COLLAR 1/2" x 2.0mm
9	SA6001.09	ANVIL
10	SA6001.10	SPRING
11	SA6001.11	HAMMER PIN
12	SB-79	STEEL BALL 7.9mm
13	SA6001.13	HAMMER CAGE
14	SA6002.12	TRIGGER
15	SA6002.13	O-RING
16	SA6001.16	SPRING PIN
17	SA6002.15	RUBBER
18	SA6001.18	HAMMER CAM
19	SA6001.19	SPINDLE GUIDE
20	SA6002.17	RETAINER
21	SA6001.21	VALVE STEM
22	SA6001.22	SPRING

Item	Part No.	Description
23	SA6002.20	EXHAUST DEFLECTOR
24	SA6002.21	O-RING
25	SA6002.22	HOSE ADAPTOR
26	B/EE4	BEARING EE4
27	SA6002.24	O-RING
28	SA6002.25	OIL SEAL
29	SA6001.V2-29	CYLINDER
30	SA6002.27	SPRING PIN
31	SA6001.31	ROTOR
32	SA6002.29	ROTOR BLADE
33	SA6001.V2-33	REAR PLATE
34	B/608ZZ	BEARING 608ZZ
35	SA6002.32	PIN
36	SA6002.33	SPRING
37	SA6002.34	O-RING
38	SA6002.35	REAR GASKET
39	SA6002.36	REAR COVER
40	SA6001.40	O-RING
41	SCB590.SB	SOCKET HEAD CAP SCREW M5x90 BLACK
42	SA6002.39	REVERSE LEVER
43	SA6002.24	O-RING
44	SA6002.41	SEAL RING

**NOTE:** It is our policy to continually improve products and as such we reserve the right to alter data, specifications and component parts without prior notice.

**IMPORTANT:** No liability is accepted for incorrect use of product.

**WARRANTY:** Guarantee is 12 months from purchase date, proof of which will be required for any claim.

**Sealey Group**, Kempson Way, Suffolk Business Park, Bury St Edmunds, Suffolk. IP32 7AR



01284 757500



01284 703534



sales@sealey.co.uk



www.sealey.co.uk