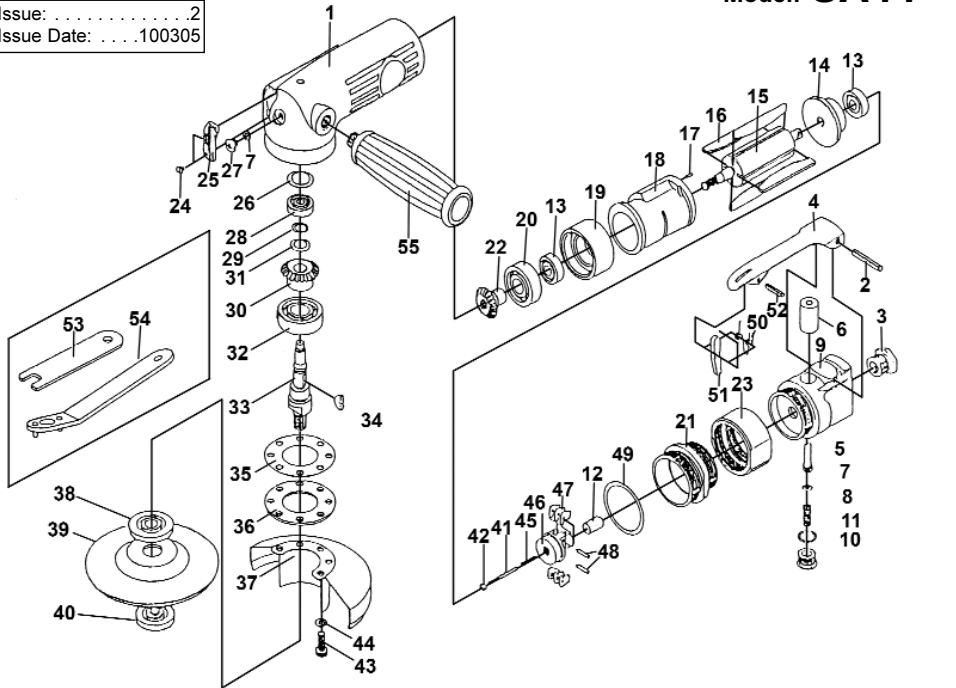


PARTS LIST FOR: 100mm EXTRA HEAVY DUTY ANGLE GRINDER

Model: **SA44**

Issue:2
Issue Date: ...100305



ITEM	PART NO.	DESCRIPTION	ITEM	PART NO.	DESCRIPTION	ITEM	PART NO.	DESCRIPTION
1	SA44T/01	MOTOR HOUSING	20	6201Z	BEARING	39	PTC/100G	GRINDING DISC
2	SA44T/02	SPRING PIN	21	SA44T/21	LOCK NUT	40	SA44T/40	FLANGE NUT
3	SA44T/03	AIR INLET	22	SA44T/22	BEVEL PINION	41	SA44T/41	ADJUST SCREW
4	SA44T/04	TRIGGER	23	SA44T/23	COUPLING NUT	42	SA44T/42	ADJUST NUT
5	SA44T/05	VALVE STEM	24	SA44T/24	SCREW	43	SA44T/43	CAP SCREW
6	SA44T/06	BUSHING	25	SA44T/25	DEFLECTOR	44	SA44T/44	WASHER
7	SA44T/07	O-RING	26	SA44T/26	SPACER	45	SA44T/45	SPRING
8	SA44T/08	VALVE SPRING	27	SA44T/27	SCREW	46	SA44T/46	GOVERNOR
9	SA44T/09	THROTTLE VALVE HOUSING	28	626ZZ	BEARING	47	SA44T/47	PENDULUM
10	SA44T/10	THROTTLE LEVER PLUG	29	SA44T/29	RETAINING RING	48	SA44T/48	SPRING PIN
11	SA44T/11	O-RING	30	SA44T/30	BEVEL GEAR	49	SA44T/49	O-RING
12	SA44T/12	PLUNGER	31	SA44T/31	WAVE WASHER	50	SA44T/50	TORSION SPRING
13	608ZZ	BEARING	32	6202ZZ	BEARING	51	SA44T/51	LEVER LOCK
14	SA44T/14	END PLATE	33	SA44T/33	SPINDLE	52	SA44T/52	SPRING PIN
15	SA44T/15	ROTOR	34	SA44T/34	KEY	53	SA44T/53	SPANNER
16	SA44T/16	ROTOR BLADE	35	SA44T/35	GASKET	54	SA44T/54	PIN WRENCH
17	SA44T/17	SPRING PIN	36	SA44T/36	RETAINER	55	SA44T/55	HANDLE
18	SA44T/18	CYLINDER	37	SA44T/37	DISC COVER			
19	SA44T/19	FRONT PLATE	38	SA44T/38	FLANGE			

NOTE: It is our policy to continually improve products and as such we reserve the right to alter data, specifications and component parts without prior notice. **IMPORTANT:** No liability is accepted for incorrect use of this equipment. **WARRANTY:** Guarantee is 12 months from purchase date, proof of which will be required for any claim. **INFORMATION:** For a copy of our latest catalogue and promotions call us on 01284 757525 and leave your full name and address, including postcode.

