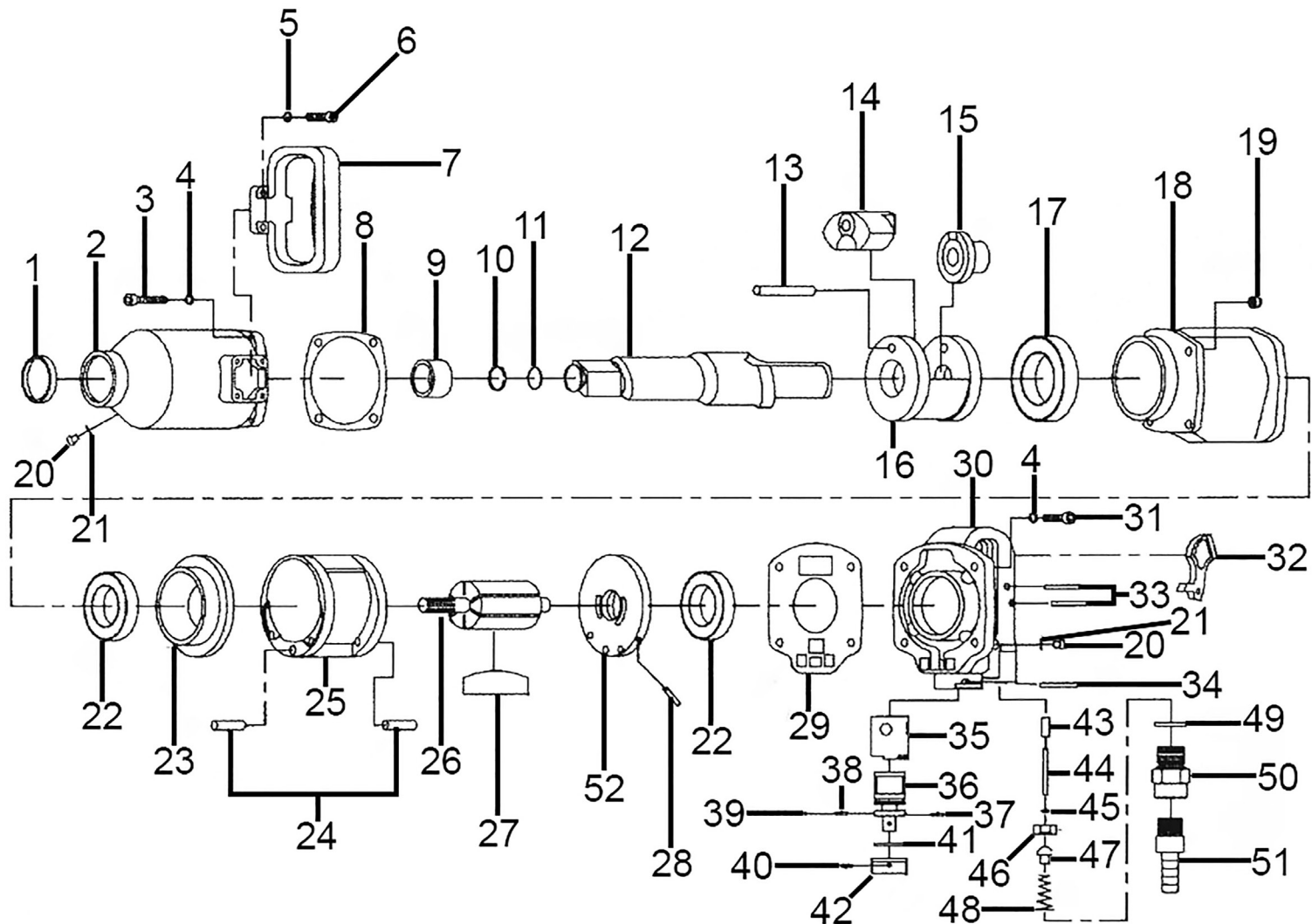




Parts Information:
Long Anvil Straight Air Impact Wrench 1" Sq Drive
Model No: SA29/S.V3



NOTE: It is our policy to continually improve products and as such we reserve the right to alter data, specifications and component parts without prior notice.

There may be alternative versions of this product, please contact us should you require this information.

IMPORTANT: No liability is accepted for incorrect use of product. Spare parts must be fitted by a competent person

WARRANTY: Guarantee is 12 months from purchase date, proof of which will be required for any claim.

Sealey Group, Kempson Way, Suffolk Business Park, Bury St Edmunds, Suffolk. IP32 7AR



01284 757500



sales@sealey.co.uk



www.sealey.co.uk



Parts Information:
Long Anvil Straight Air Impact Wrench 1" Sq Drive
Model No: SA29/S.V3

Item	Part No.	Description
1	SA29.V3-01	Oil Seal
2	SA29.V3-02	Housing
3	SCB835.SB	Socket Cap Bolt M8 x 35mm Black
4	SWM8.SB	Spring Washer M8 Black
5	SWM6.SB	Spring Washer M6 Black
6	SCB625.SB	Socket Cap Bolt M6 x 25mm Black
7	SA29.V3-07	Handle
8	SA29.V3-08	Gasket, Front
9	SA29.V3-09	Bushing
10	SA29.V3-10	Retainer Ring
11	SA29.V3-11	O-Ring (18.27 x 13.87 x 2.20mm)
12	SA29.V3-12	Anvil
13	SA29.V3-13	Hammer Pin
14	SA29.V3-14	Hammer
15	SA29.V3-15	Drive Cam
16	SA29.V3-16	Hammer Cage
17	B/6208ZZ	Bearing 6208ZZ
18	SA29.V3-18	Housing
19	SN8.SB	Steel Nut M8 Black
20	SA29.V3-20	Brass cap nut
21	DH03.V2-39	O-Ring (12.81 x 9.25 x 1.78mm)
22	B/6208	Bearing 6208
23	SA29.V3-23	Front Plate
24	SA29.V3-24	Spring Pin M5 x 16mm
25	SA29.V3-25	Cylinder
26	SA29.V3-26	Rotor
27	SA29.V3-27	Vane (Set of 6)

Item	Part No.	Description
28	SA29.V3-28	Set Pin
29	SA29.V3-29	Gasket, Rear
30	SA29.V3-30A	Rear Cover Assembly
31	SCB825.SB	Socket Cap Bolt M8 x 25mm Black
32	SA29.V3-32	Trigger
33	800TTJ.227	Spring Pin M4 x 25mm
34	SA29.V3-34	Spring Pin M4 x 32mm
35	SA29.V3-35	Brass Sleeve
36	SA29.V3-36	Plunger
37	SA29.V3-37	Spring Pin M3.2 x 10mm
38	SA29.V3-38	Spring Ø3.7mm
39	SB-4.0	Steel Ball 4.0mm
40	SA29.V3-40	Spring Pin M3.2 x 14mm
41	SA29.V3-41	O-Ring (22.36 x 17.12 x 2.62mm)
42	SA29.V3-42	Knob, Speed Switch, OD: 32mm L: 20mm ID: 10mm
43	SA29.V3-43	Sleeve
44	SA29.V3-44	Pin
45	SA29.V3-45	O-Ring
46	SA29.V3-46	Cup Plug
47	SA29.V3-47	Plug
48	SA29.V3-38	Valve Spring Tapered
49	SA29.V3-49	O-Ring (22.16 x 17.85 x 2.16mm)
50	SA29.V3-50	Air Inlet
51	SA29.V3-51	Inlet Screw
52	SA29.V3-52	Rear Plate
--	B/6205ZZ	Bearing 6205ZZ (Not Shown)

NOTE: It is our policy to continually improve products and as such we reserve the right to alter data, specifications and component parts without prior notice. There may be alternative versions of this product, please contact us should you require this information.

IMPORTANT: No liability is accepted for incorrect use of product. Spare parts must be fitted by a competent person

WARRANTY: Guarantee is 12 months from purchase date, proof of which will be required for any claim.

Sealey Group, Kempson Way, Suffolk Business Park, Bury St Edmunds, Suffolk. IP32 7AR



01284 757500



sales@sealey.co.uk



www.sealey.co.uk