

NOTE: It is our policy to continually improve products and as such we reserve the right to alter data, specifications and component parts without prior notice.

IMPORTANT: No liability is accepted for incorrect use of product.

WARRANTY: Guarantee is 12 months from purchase date, proof of which will be required for any claim.



Parts Information:
Trolley Jack 1.5tonne Aluminium Rocket Lift
Model No: RJA1500

Item	Part No.	Description
1	GSM88.S	Grub screw m8x8 (single)
2	RJA1500.01-02	Steel ball 15/64"
3	RJA1500.01-03	Seal bolt
4	RJA1500.01-04	O-ring
5	RJA1500.01-05	Base
6	RJA1500.01-06	Oil cover
7	RJA1500.01-07	O-ring / O-ring
8	RJA1500.01-08	"Ext Circlip 22.5mm OD
9	RJA1500.01-09	Y-ring /
10	RJA1500.01-10	Back seal
11	RJA1500.01-11	Bushing
12	RJA1500.01-12	Ram
13	RJA1500.01-13	Hydraulic cylinder
14	RJA1500.01-02	Steel ball 15/64"
15	RJA1500.01-15	Bushing
16	SB-8.0	Steel ball 8.0mm
17	RJA1500.01-17	Spring
18	RJA1500.01-18	Reservoir end cap
19	RJA1500.01-19	O-ring
20	RJA1500.01-20	O-ring
21	RJA1500.01-21	Back seal
22	RJA1500.01-22	Cylinder

Item	Part No.	Description
23	RJA1500.01-23	O-ring
24	RJA1500.01-24	Back seal
25	RJA1500.01-25	High pressure bolt
26	RJA1500.01-26	O-ring
27	RJA1500.01-27	Discharge valve rod
28	SB-5.0	Steel ball 5.0mm
29	RJA1500.01-29	Safety valve
30	RJA1500.01-30	Spring
31	RJA1500.01-31	O-ring
32	RJA1500.01-32	High pressure bolt m10x17
33	RJA1500.01-33	Piston covers(1xlarge & 1xsmall)
34	RJA1500.01-34	Snap ring
35	RJA1500.01-35	Back seal (1xlarge & 1xsmall)
36	RJA1500.01-36	O-rings (1xlarge & 1xsmall)
37	RJA1500.01-37	Pump case
38	RJA1500.0138S	Pump core (small)
--	RJA1500.0138L	Pump core (large) (NOT SHOWN)
39	RJA1500.01-39	Large press spring
40	FWM12.S	Flat washer m12 single
--	RJA1500.0137C	Complete pump core & case (small) (NOT SHOWN)
--	RJA1500.0138C	Complete pump core & case (large) (NOT SHOWN)

NOTE: It is our policy to continually improve products and as such we reserve the right to alter data, specifications and component parts without prior notice.

IMPORTANT: No liability is accepted for incorrect use of product.

WARRANTY: Guarantee is 12 months from purchase date, proof of which will be required for any claim.

Sealey Group, Kempson Way, Suffolk Business Park, Bury St Edmunds, Suffolk. IP32 7AR



01284 757500



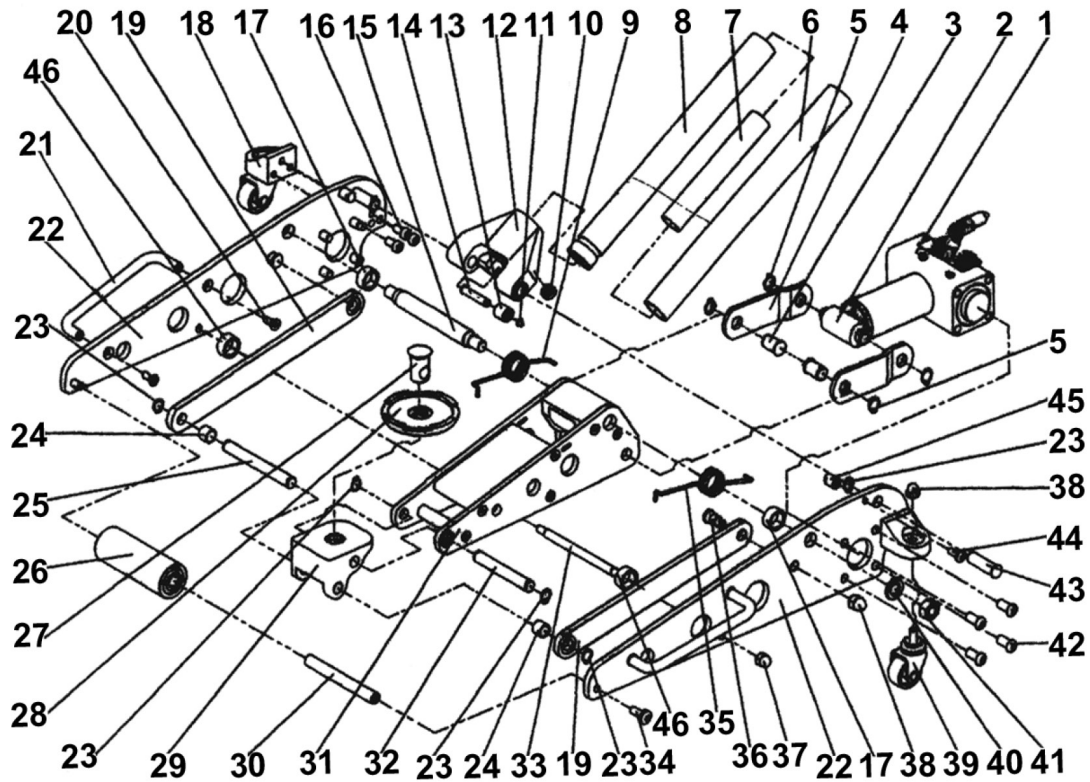
01284 703534



sales@sealey.co.uk



www.sealey.co.uk



NOTE: It is our policy to continually improve products and as such we reserve the right to alter data, specifications and component parts without prior notice.

IMPORTANT: No liability is accepted for incorrect use of product.

WARRANTY: Guarantee is 12 months from purchase date, proof of which will be required for any claim.



Parts Information:
Trolley Jack 1.5tonne Aluminium Rocket Lift
Model No: RJA1500

Item	Part No.	Description
1	RJA1500.01	Hydraulic unit ass'y
2	RJA1500.02	Coupling connector
3	RJA1500.03	Pin for return rod c/w csk screw
4	RJA1500.04	Return rod
5	RJA1500.05	"Ext Circlip 20.3mm OD
6	RJA1500.06	Upper handle
7	RJA1500.07	Connector tube
8	RJA1500.08	Lower handle
--	RJA1500.08A	Rubber handle sleeve (NOT SHOWN)
9	RJA1500.09	Spring,handle return (right)
10	RJAS1500.04	Handle socket bolt
11	RJA1500.11	Circlip
12	RJA1500.12	Handle socket
13	RJA1500.13	Wheel,fixed (20x10x20)
14	RJA1500.14	Wheel axle
15	RJA1500.15	Supporting shaft
16	RJA1500.16	Bolt m10x20
17	RJA1500.17	Support shaft bushing
18	RJA1500.18	Wheel stand
19	RJA1500.19	Connecting rod
20	RJA1500.20	M8x20 csk socket screw
21	RJAS2500V2.20	Side handle
22	RJA1500.22	Wall plate ass'y
23	RJA1500.23	Ext Circlip18mm OD.

Item	Part No.	Description
24	RJA1500.24	Pin for connecting rod
25	RJA1500.25	Connecting rod axle
26	RJA1500.26	Wheel,front roller (50x15x143)
27	RJA1500.27	Saddle shaft
28	RJA1500.28	Saddle
29	RJA1500.29	Saddle base
30	RJA1500.30	Front wheel shaft
31	RJA1500.31	Lifting arm ass'y
32	RJA1500.32	Shaft for saddle base
33	RJA1500.33	Shaft for lifting arm
34	BHSS1225.S	Button head socket screw m12x25 zinc
35	RJA1500.35	Spring,handle return (left)
36	RJA1500.36	Shaft for connecting rod
37	SN10.SD	Steel nut m10 domed (single)
38	SN12.SD	Steel nut m12 domed (single)
39	RJA1500.39	Wheel,swivel castor (45x8x23x68)
40	RJA1500.40	Washer
41	NLN16.S	Nyloc nut m16 zinc din 985 (single)
42	RJA1500.42	Hex socket button head screw m12x25mm
43	RJA1500.43	Shaft for handle socket
44	BHSS820.S	Button head socket screw m8x20 zinc
45	RJA1500.45	Location block
46	RJA1500.46	Small roller
--	RJA1500.RP	Rubber pad (NOT SHOWN)

NOTE: It is our policy to continually improve products and as such we reserve the right to alter data, specifications and component parts without prior notice.

IMPORTANT: No liability is accepted for incorrect use of product.

WARRANTY: Guarantee is 12 months from purchase date, proof of which will be required for any claim.

Sealey Group, Kempson Way, Suffolk Business Park, Bury St Edmunds, Suffolk. IP32 7AR



01284 757500



01284 703534



sales@sealey.co.uk



www.sealey.co.uk