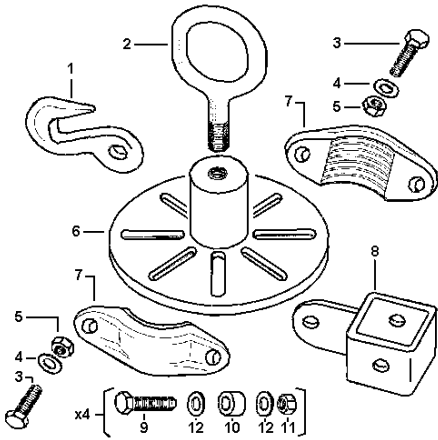


MACPHERSON STRUT PULLING KIT

Model RE92/19

PARTS DETAILS



Item	Part No.	Description	Item	Part No.	Description
1	184.C4005005	Hook	7	184.D2010100	Clamp
2	184.D2511200	Pull Ring	8	184.D6021400	Pulling Block
3	184.C0003005	Screw, M12x1.5x50	9	184.C0000632	Screw, M10x60
4	184.C0006512	Washer, D12	10	184.D5510400	Spacer, D20x10
5	184.C0005126	Nut	11	184.C0005017	Nut, M10
6	184.A0540200	Base Plate	12	184.C0006510	Washer, D10

For a copy of our latest catalogue and promotions call us on 01284 757525 and leave your full name, address and postcode.

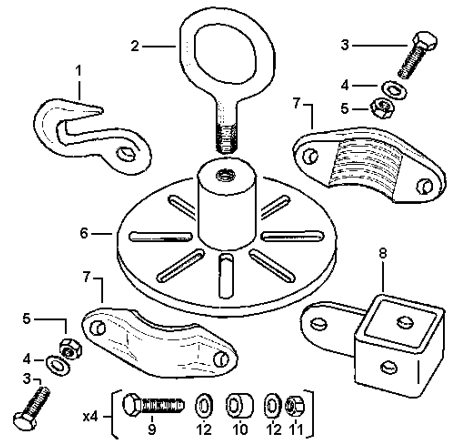
SEALEY POWER PRODUCTS Sole UK Distributor, Sealey Group,
Bury St. Edmunds, Suffolk.
E-mail: sales@sealey.co.uk
01284 757500 01284 703534 Web: www.sealey.co.uk

RE92/19 - 1 - 260902

MACPHERSON STRUT PULLING KIT

Model RE92/19

PARTS DETAILS



Item	Part No.	Description	Item	Part No.	Description
1	184.C4005005	Hook	7	184.D2010100	Clamp
2	184.D2511200	Pull Ring	8	184.D6021400	Pulling Block
3	184.C0003005	Screw, M12x1.5x50	9	184.C0000632	Screw, M10x60
4	184.C0006512	Washer, D12	10	184.D5510400	Spacer, D20x10
5	184.C0005126	Nut	11	184.C0005017	Nut, M10
6	184.A0540200	Base Plate	12	184.C0006510	Washer, D10

For a copy of our latest catalogue and promotions call us on 01284 757525 and leave your full name, address and postcode.

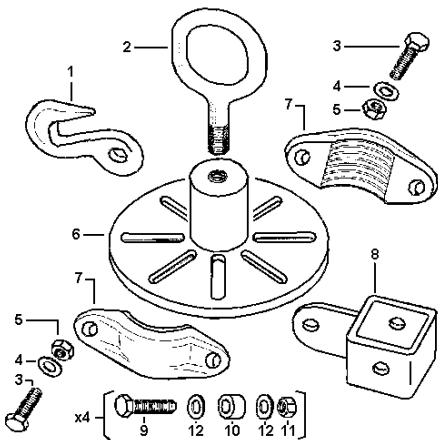
SEALEY POWER PRODUCTS Sole UK Distributor, Sealey Group,
Bury St. Edmunds, Suffolk.
E-mail: sales@sealey.co.uk
01284 757500 01284 703534 Web: www.sealey.co.uk

RE92/19 - 1 - 260902

MACPHERSON STRUT PULLING KIT

Model RE92/19

PARTS DETAILS



Item	Part No.	Description	Item	Part No.	Description
1	184.C4005005	Hook	7	184.D2010100	Clamp
2	184.D2511200	Pull Ring	8	184.D6021400	Pulling Block
3	184.C0003005	Screw, M12x1.5x50	9	184.C0000632	Screw, M10x60
4	184.C0006512	Washer, D12	10	184.D5510400	Spacer, D20x10
5	184.C0005126	Nut	11	184.C0005017	Nut, M10
6	184.A0540200	Base Plate	12	184.C0006510	Washer, D10

For a copy of our latest catalogue and promotions call us on 01284 757525 and leave your full name, address and postcode.

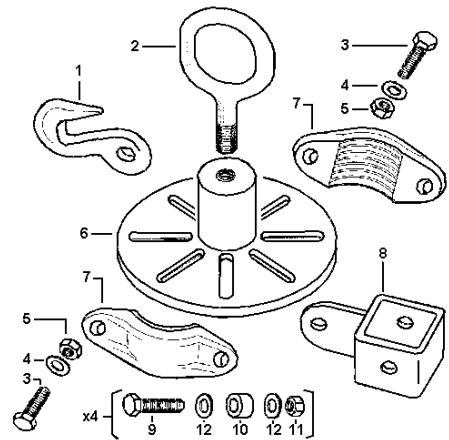
SEALEY POWER PRODUCTS Sole UK Distributor, Sealey Group,
Bury St. Edmunds, Suffolk.
E-mail: sales@sealey.co.uk
01284 757500 01284 703534 Web: www.sealey.co.uk

RE92/19 - 1 - 260902

MACPHERSON STRUT PULLING KIT

Model RE92/19

PARTS DETAILS



Item	Part No.	Description	Item	Part No.	Description
1	184.C4005005	Hook	7	184.D2010100	Clamp
2	184.D2511200	Pull Ring	8	184.D6021400	Pulling Block
3	184.C0003005	Screw, M12x1.5x50	9	184.C0000632	Screw, M10x60
4	184.C0006512	Washer, D12	10	184.D5510400	Spacer, D20x10
5	184.C0005126	Nut	11	184.C0005017	Nut, M10
6	184.A0540200	Base Plate	12	184.C0006510	Washer, D10

For a copy of our latest catalogue and promotions call us on 01284 757525 and leave your full name, address and postcode.

SEALEY POWER PRODUCTS Sole UK Distributor, Sealey Group,
Bury St. Edmunds, Suffolk.
E-mail: sales@sealey.co.uk
01284 757500 01284 703534 Web: www.sealey.co.uk

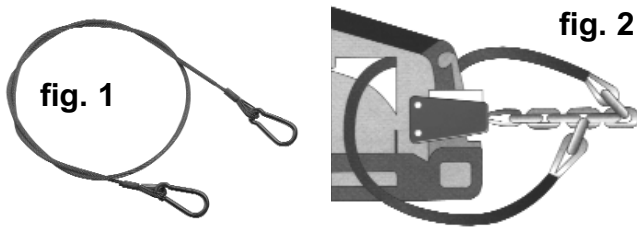
RE92/19 - 1 - 260902

SAFETY WARNING

This product should not be used without a safety cable. In the event of the puller/clamp becoming detached from the vehicle bodywork when under tension a safety cable will minimise the risk of serious injury.

Pull Clamp Safety Cable (fig.1), Model Number RE92/SC, is available from your Sealey dealer.

After attaching the puller/clamp to the bodywork, but before applying any tension, one end of the safety cable should be clipped to the puller/clamp chain and the other end passed through the bodywork and then also clipped to the chain, as shown in fig. 2.



For a copy of our latest catalogue and promotions call us on 01284 757525 and leave your full name, address and postcode.

SEALEY POWER PRODUCTS	Sole UK Distributor, Sealey Group, Bury St. Edmunds, Suffolk.	E-mail: sales@sealey.co.uk Web: www.sealey.co.uk
01284 757500	01284 703534	

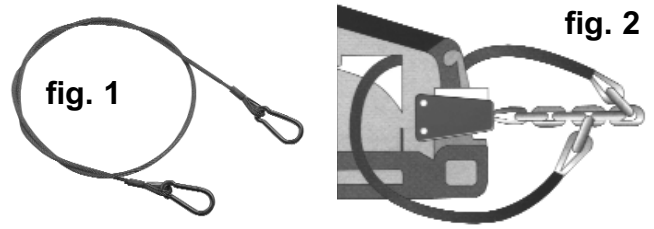
RE92/19 - 1 - 260902

SAFETY WARNING

This product should not be used without a safety cable. In the event of the puller/clamp becoming detached from the vehicle bodywork when under tension a safety cable will minimise the risk of serious injury.

Pull Clamp Safety Cable (fig.1), Model Number RE92/SC, is available from your Sealey dealer.

After attaching the puller/clamp to the bodywork, but before applying any tension, one end of the safety cable should be clipped to the puller/clamp chain and the other end passed through the bodywork and then also clipped to the chain, as shown in fig. 2.



For a copy of our latest catalogue and promotions call us on 01284 757525 and leave your full name, address and postcode.

SEALEY POWER PRODUCTS	Sole UK Distributor, Sealey Group, Bury St. Edmunds, Suffolk.	E-mail: sales@sealey.co.uk Web: www.sealey.co.uk
01284 757500	01284 703534	

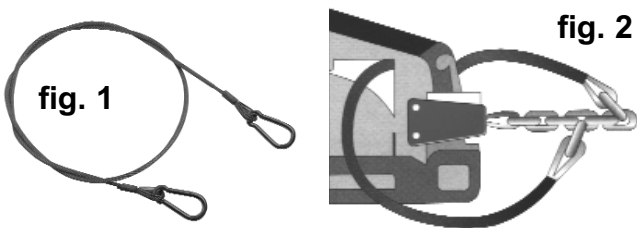
RE92/19 - 1 - 260902

SAFETY WARNING

This product should not be used without a safety cable. In the event of the puller/clamp becoming detached from the vehicle bodywork when under tension a safety cable will minimise the risk of serious injury.

Pull Clamp Safety Cable (fig.1), Model Number RE92/SC, is available from your Sealey dealer.

After attaching the puller/clamp to the bodywork, but before applying any tension, one end of the safety cable should be clipped to the puller/clamp chain and the other end passed through the bodywork and then also clipped to the chain, as shown in fig. 2.



For a copy of our latest catalogue and promotions call us on 01284 757525 and leave your full name, address and postcode.

SEALEY POWER PRODUCTS	Sole UK Distributor, Sealey Group, Bury St. Edmunds, Suffolk.	E-mail: sales@sealey.co.uk Web: www.sealey.co.uk
01284 757500	01284 703534	

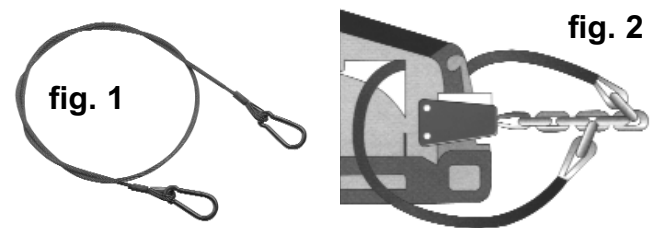
RE92/19 - 1 - 260902

SAFETY WARNING

This product should not be used without a safety cable. In the event of the puller/clamp becoming detached from the vehicle bodywork when under tension a safety cable will minimise the risk of serious injury.

Pull Clamp Safety Cable (fig.1), Model Number RE92/SC, is available from your Sealey dealer.

After attaching the puller/clamp to the bodywork, but before applying any tension, one end of the safety cable should be clipped to the puller/clamp chain and the other end passed through the bodywork and then also clipped to the chain, as shown in fig. 2.



For a copy of our latest catalogue and promotions call us on 01284 757525 and leave your full name, address and postcode.

SEALEY POWER PRODUCTS	Sole UK Distributor, Sealey Group, Bury St. Edmunds, Suffolk.	E-mail: sales@sealey.co.uk Web: www.sealey.co.uk
01284 757500	01284 703534	

RE92/19 - 1 - 260902