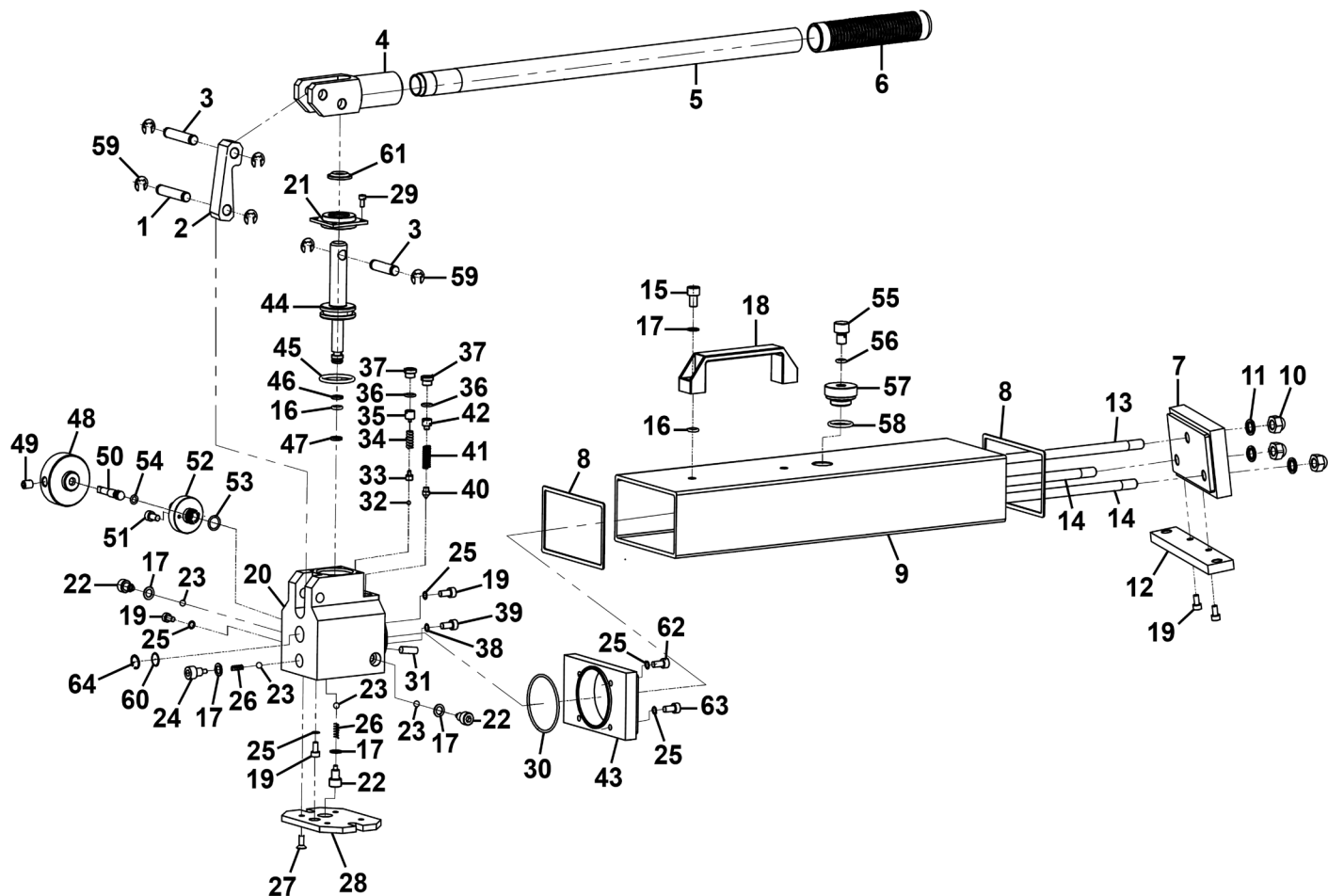


## Parts Information: Hydraulic Hand Pump Without Air Hose 10,000psi Model No: RE110



Item	Part No.	Description	Qty
1	RE110-01	Connecting Rod Pin (Long)	1
2	RE110-02	Connecting Rod	1
3	RE110-03	Connecting Rod Pin (Short)	2
4	RE110-04	Handle Socket	1
5	RE110-05	Handle	1
6	RE110-06	Handle Grip	1
7	RE110-07	Tank Rear Cover	1
8*	RE110-08	Tank Sealing Gasket	2
9	RE110-09	Oil Tank	1
10	SN10.SD	Steel Nut M10 Domed	3
11	FWM10.S	Flat Washer M10 Zinc	3
12	RE110-12	Rear Mounting Plate	1
13	RE110-13	Tie Rod (A)	1

Item	Part No.	Description	Qty
14	RE110-14	Tie Rod (B)	2
15	SCB812.SB	Socket Cap Bolt M8 x 12mm Black	2
16	RE110-16	O-Ring Ø7.1 x 2.65	3
17	RE110-17	Copper Washer Ø8	6
18	RE110-18	Lifting Handle	1
19	SCB510.SB	Socket Cap Bolt M5 x 10mm Black	5
20	RE110-20	Valve Block	1
21	RE110-21	Cover Plate for Pump Core	1
22	RE110-22	High Pressure Screw (A)	3
23	SB-6.0	Steel Ball 6.0mm	4
24	RE110-24	High Pressure Screw (B)	1
25	RE110-25	Copper Washer Ø5	7
26	RE110-26	Reset Spring	2

**NOTE:** It is our policy to continually improve products and as such we reserve the right to alter data, specifications and component parts without prior notice. There may be alternative versions of this product, please contact us should you require this information.

**IMPORTANT:** No liability is accepted for incorrect use of product. Spare parts must be fitted by a competent person

**WARRANTY:** Guarantee is 12 months from purchase date, proof of which will be required for any claim.



Parts Information:  
**Hydraulic Hand Pump Without Air Hose**  
**10,000psi**  
**Model No: RE110**

Item	Part No.	Description	Qty
27	MSC510.S	Csk Phillips Machine Screw M5 X 10 Zinc	4
28	RE110-28	Front Mounting Plate	1
29	SCB48.SB	Socket Cap Bolt M4 x 8mm Black	4
30*	RE110-30	O-Ring Ø54.13 x 2.3	1
31	RE110-31	Filter Screen	1
32	SB-4.0	Steel Ball 4.0mm	1
33	RE110-33	Balance Valve Seat	1
34	RE110-34	Safety Valve Body	1
35	RE110-35	Pressure Adjusting Screw	1
36*	RE110-36	O-Ring Ø8.5 x 1.9	2
37	RE110-37	Sealing Screw	2
38	RE110-38	Copper Washer Ø6	1
39	SCB612.SB	Socket Cap Bolt M6 x 12mm Black	1
40	RE110-40	Low Pressure Cone Valve	1
41	RE110-41	Low Pressure Safety Valve Spring	1
42	RE110-42	Low Pressure Adjusting Screw	1
43	RE110-43	Tank Front Cover	1
44	RE110-44	Pump Core	1
45*	RE110-45	O-Ring Ø31.7 x 3.5	1
46	RE110-46	Split Washer 12 x 7.5 x 1.25	1

Item	Part No.	Description	Qty
47*	RE110-47	Guide Ring 12 x 7.1 x 2.2	1
48	RE110-48	Handwheel	1
49	GSM810.S	Grub Screw M8x10 (single)	1
50	RE110-50	Drain Valve Stem	1
51	SCB616.SB	Socket Cap Bolt M6 x 16mm Black	2
52	RE110-52	Drain Valve Seat	1
53*	RE110-53	O-Ring Ø12 x 1.8	1
54*	RE110-54	O-Ring Ø6 x 1.9	1
55	RE110-55	Air Vent Screw	1
56	RE110-56	O-Ring Ø8 x 2.5	1
57	RE110-57	Air Vent Seat	1
58	RE110-58	O-Ring Ø21 x 3	1
59	RE110-59	E-Clip Ø8	6
60	RE110-60	Filter Mesh	1
61*	RE110-61	Dust Ring	1
62	SCB520.SB	Socket Cap Bolt M5 X 20mm Black	2
63	SCB525.SB	Socket Cap Bolt M5 x 25mm Black	2
64	RE110-64	External Circlip Ø14	1
--	RE110-RK	Repair Kit (items marked '*' included)	1

**NOTE:** It is our policy to continually improve products and as such we reserve the right to alter data, specifications and component parts without prior notice. There may be alternative versions of this product, please contact us should you require this information.

**IMPORTANT:** No liability is accepted for incorrect use of product. Spare parts must be fitted by a competent person

**WARRANTY:** Guarantee is 12 months from purchase date, proof of which will be required for any claim.

**Sealey Group**, Kempson Way, Suffolk Business Park, Bury St Edmunds, Suffolk. IP32 7AR



01284 757500



sales@sealey.co.uk



www.sealey.co.uk