

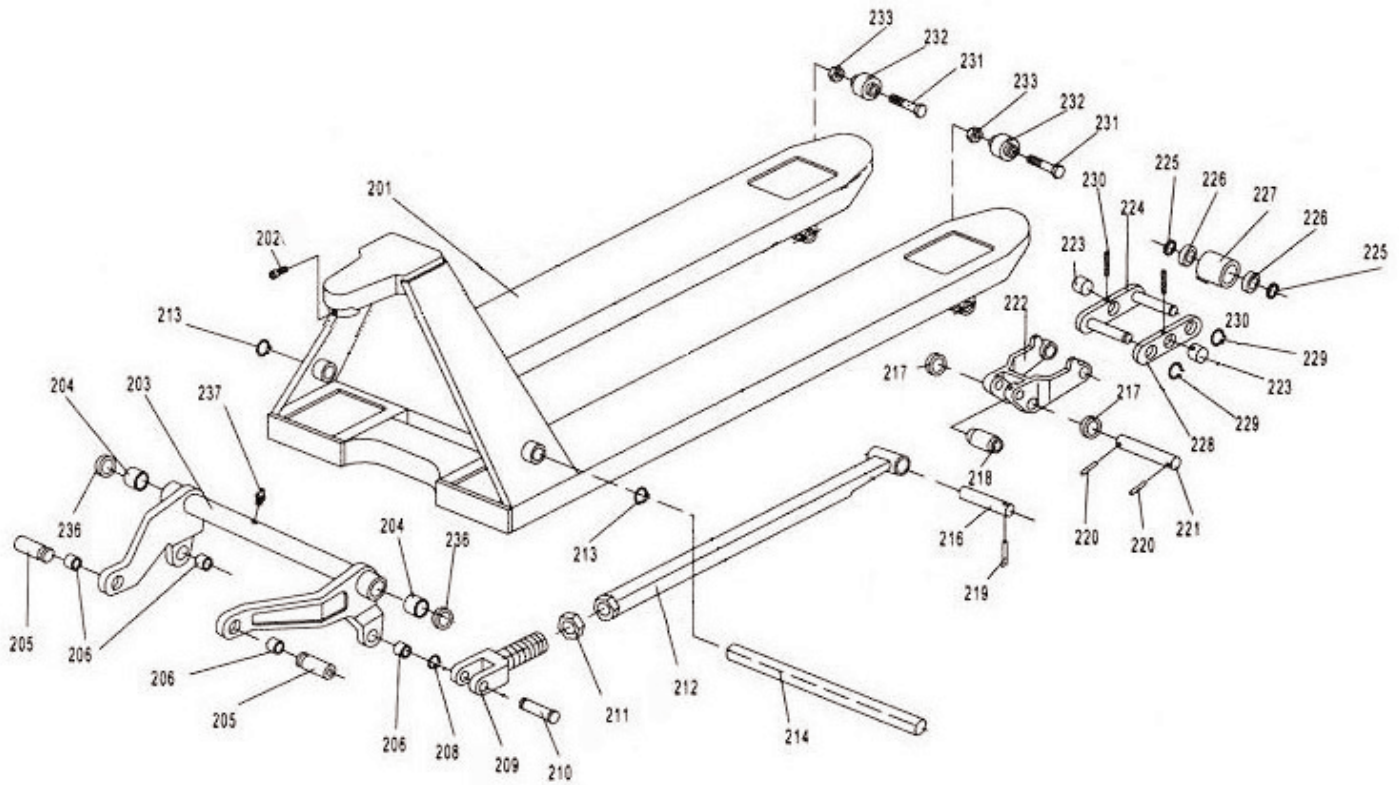
Item	Part No.	Description
101	PT1150.V2-101	RELEASE ROD
104	PT1150.V2-104	LONG CONNECTING ROD ASSEMBLY
105	PT1150.V2-105	AXLE WITH HOLE
106	PT1150.V2-106	ELASTIC PIN
107	PT1150.V2-107	BUSHING
108	PT1150.V2-108	ROLLER PIN
109	PT1150.V2-109	PRESSURE ROLLER
110	PT1150.V2-110	DRAW- BAR
111	PT1150.V2-111	STOP RUBBER
112	PT1150.V2-112	ELASTIC PIN

Item	Part No.	Description
113	PT1150.V2-113	BLADE SPRING
114	PT1150.V2-114	SPRING
115	PT1150.V2-115	ELASTIC PIN
116	PT1150.V2-116	ELASTIC PIN
117	PT1150.V2-117	CONTROL HANDLE
118	PT1150.V2-118	ROLLER
119	PT1150.V2-119	ELASTIC PIN
121	PT1150.V2-121	PULL BOARD
122	PT1150.V2-122	PIN

NOTE: It is our policy to continually improve products and as such we reserve the right to alter data, specifications and component parts without prior notice.

IMPORTANT: No liability is accepted for incorrect use of product.

WARRANTY: Guarantee is 12 months from purchase date, proof of which will be required for any claim.



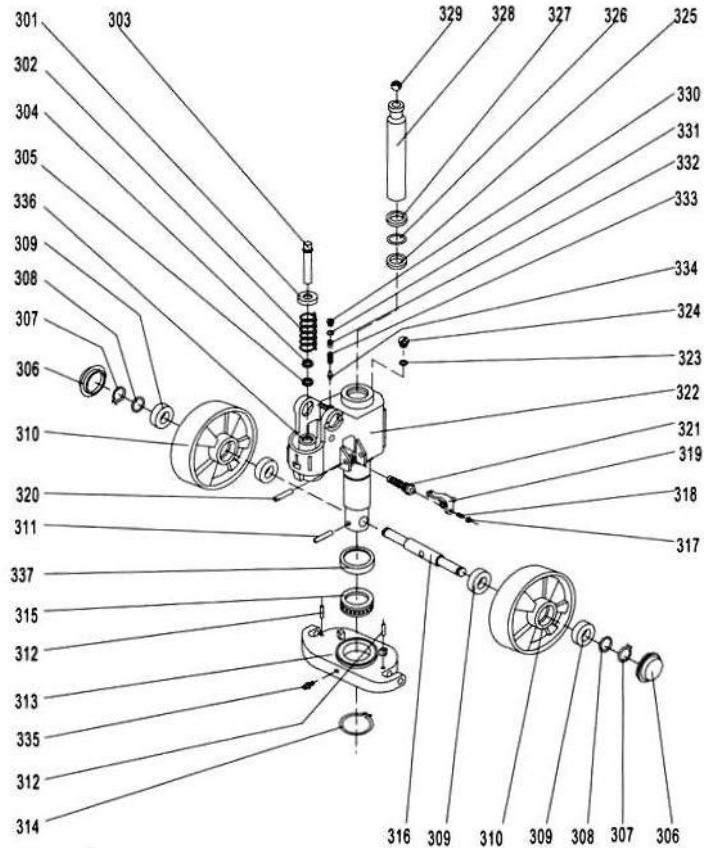
Item	Part No.	Description
201	PT1220.V2-201	FORK FRAME
202	PT1150.V2202G	BOLT
203	PT1220.V2-203	ROCK- ARM
204	PT1150.V2-204	BUSHING
205	PT1150.V2-205	SHAFT
206	PT1150.V2-206	BUSHING
208	PT1150.V2-208	RETAINING RING
209	PT1150.V2B209	JOINT
210	PT1150.V2-210	PIN
211	PT1150.V2B211	M16 X 1.5 FINE PITCH HALF NUT
212	PT1220.V2B212	PUSHING ROD
213	PT1150.V2-213	RETAINING RING
214	PT1220.V2-214	SHAFT
216	PT1150.V2-216	SHAFT
217	PT1150.V2-217	INTERMEDIATE ROLLER
218	PT1150.V2-218	EXTENDING ROLLER
219	PT1150.V2-219	ELASTIC PIN

Item	Part No.	Description
220	PT1150.V2-220	ELASTIC PIN
221	PT1150.V2-221	SHAFT
222	PT1150.V2-222	FRAME OF ROLLER
223	PT1150.V2-223	SHAFT
224	PT1150.V2-224	TANDEM MOUNTING WITH PIN
225	PT2500.225	NYLON SEAL RING
226	B/6204-2RS	BEARING 6204-2RS
227	PT1150.V2-227	LOADING ROLLER
228	PT1150.V2-228	TANDEM MOUNTING
229	PT1150.V2-229	SPRING WASHER
230	PT1150.V2-230	ELASTIC PIN
231	HHB1062.S	HEX HEAD BOLT M10x62mm SINGLE)
232	PT1150.V2-232	ENTER ROLLER
233	NLN10.S	NYLOC NUT M10 ZINC (SINGLE)
236	PT1150.V2-236	WASHER
237	GNM19S	GREASE NIPPLE STR 6 x 1.00mm SINGLE

NOTE: It is our policy to continually improve products and as such we reserve the right to alter data, specifications and component parts without prior notice.

IMPORTANT: No liability is accepted for incorrect use of product.

WARRANTY: Guarantee is 12 months from purchase date, proof of which will be required for any claim.



Item	Part No.	Description
301	PT1150.V2-301	SPRING CAP
302	PT1150.V2-302	SPRING
303	PT1150.V2-303	PUMP PISTON
304	PT1150.V2-304	DUST RING
305	PT1150.V2-305	SEAL
306	PT1150.V2-306	DUST COVER
307	PT1150.V2-307	LOCKING RING
308	PT1150.V2-308	SEAL RING
309	B/6204-2RS	BEARING 6204-2RS
310	PT1150.V2-310	WHEEL, FIXED LOADING (180x45x50)
311	PT1150.V2-311	ELASTIC PIN
312	PT1150.V2-312	ELASTIC PIN
313	PT1150.V2-313	THRUST PLATE
314	PT1150.V2-314	RETAINING RING
315	PT1150.V2-315	BEARING
316	PT1150.V2-316	SHAFT OF LOADING WHEEL
317	PT1150.V2-317	NUT
318	PT1150.V2-318	SCREW
319	PT1150.V2-319	LEVER PLATE

Item	Part No.	Description
320	PT1150.V2-320	ELASTIC PIN
321	PT1150.V2-321	VALVE CARTRIDGE ASS'Y
322	PT1150.V2-322	PUMP BODY
323	PT1150.V2-323	SEAL WASHER
324	PT1150.V2-324	SCREW PLUG
325	PT1150.V2-325	SEAL
326	PT1150.V2-326	O-RING
327	PT1150.V2-327	DUST RING
328	PT1150.V2-328	PISTON ROD
329	PT1150.V2-329	STEEL BALL
330	PT1150.V2-330	SCREW PLUG
331	PT1150.V2-331	O-RING
332	PT1150.V2-332	BOLT
333	PT1150.V2-333	SPRING
334	PT1150.V2-334	SPINDLE OF SAFETY VALVE
335	GNM19S	GREASE NIPPLE STR 6 x 1.00mm SINGLE
336	PT1150.V2-336	CYLINDER
337	PT1150.V2-337	COVER OF BEARING

NOTE: It is our policy to continually improve products and as such we reserve the right to alter data, specifications and component parts without prior notice.

IMPORTANT: No liability is accepted for incorrect use of product.

WARRANTY: Guarantee is 12 months from purchase date, proof of which will be required for any claim.