

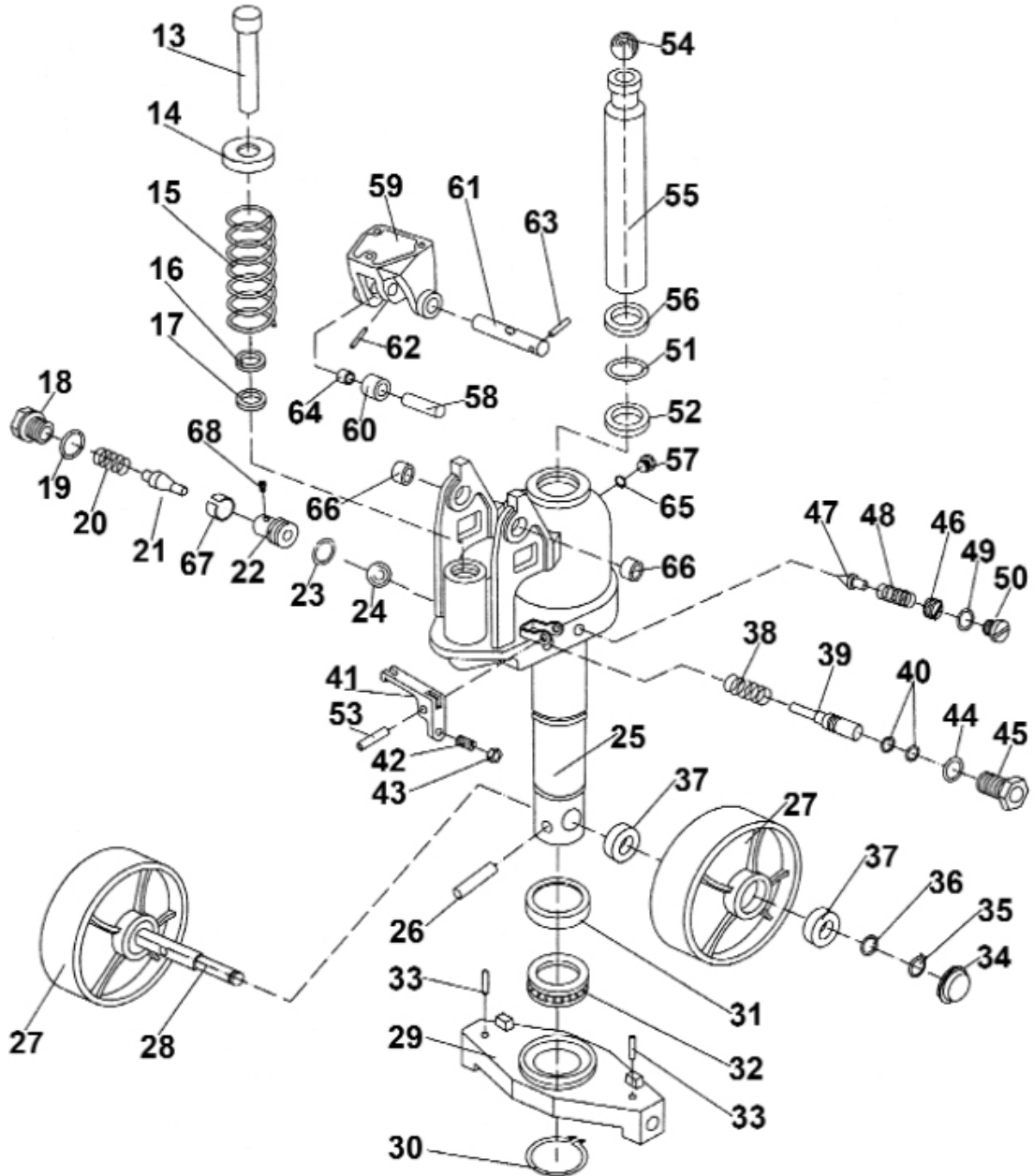
Item	Part No.	Description
--	B/51112	Bearing race 51112 / Bearing race 51112 (NOT SHOWN)
--	B/6204-2RS	Bearing 6204-2rs / Bearing 6204-2rs (NOT SHOWN)
--	B/6204-2RS	Bearing 6204-2rs / Bearing 6204-2rs (NOT SHOWN)
1	PT1150LD.601	Pull rod / Pull rod
2	PT1150LD.602	Chain ass'y / Chain ass'y

Item	Part No.	Description
6	PT1150LD.606	Socket cap bolt zinc m10x23
7	PT1150LD.607	Spring washer m10
8	PT1150LD.608	Handle / Handle
9	PT1150LD.609	Socket cap bolt zinc m8x20
10	PT1150LD.610	Spring pin m5.5 x 16
11	PT1150LD.611	Cap
12	PT1150LD.612	Control handle

NOTE: It is our policy to continually improve products and as such we reserve the right to alter data, specifications and component parts without prior notice.

IMPORTANT: No liability is accepted for incorrect use of product.

WARRANTY: Guarantee is 12 months from purchase date, proof of which will be required for any claim.



NOTE: It is our policy to continually improve products and as such we reserve the right to alter data, specifications and component parts without prior notice.

IMPORTANT: No liability is accepted for incorrect use of product.

WARRANTY: Guarantee is 12 months from purchase date, proof of which will be required for any claim.



Parts Information:
Pallet Truck 1680kg 1150 x 520mm
Model No: PT1150LD

Item	Part No.	Description
13	PT1150LD.D101	Pump piston rod
14	PT1150LD.D102	Thick metal cover
15	PT1150LD.D103	Spring
16	PT1150LD.D104	Dust ring
17	PT1150LD.D105	Y-seal
18	PT1150LD.D106	Screw
19	PT1150LD.D107	O-ring
20	PT1150LD.D108	Spring
21	PT1150LD.D109	Pump valve spindle
22	PT1150LD.D110	Pump valve seat
23	PT1150LD.D111	O-ring
24	PT1150LD.D112	Steel ball 7.2mm
25	PT1150LD.D113	Pump base
26	PT1150LD.D115	Roll pin
27	PT1150LD.D116	Wheel, fixed guide (180x46x50)
28	PT1150LD.D117	Steering wheel shaft
29	PT1150LD.D118	Thrust plate
30	PT1150LD.D120	Retaining ring
31	PT1150LD.D121	Bearing cover
32	PT1150LD.D122	Bearing race 51112
33	PT1150LD.D123	Roll pin
34	PT1150LD.D124	Dust cover
35	PT1150LD.D125	"Ext Circlip 22.5mm OD.
36	PT1150LD.D126	Seal washer
37	PT1150LD.D127	Bearing
38	PT1150LD.D129	Spring
39	PT1150LD.D130	Strike pin
40	PT1150LD.D131	O-ring

Item	Part No.	Description
41	PT1150LD.D132	Lever
42	PT1150LD.D133	Adjusting screw
43	PT1150LD.D134	Nut
44	PT1150LD.D135	O-ring
45	PT1150LD.D136	Axle sleeve
46	PT1150LD.D137	Adjusting bolt
47	PT1150LD.D139	Safety valve spindle
48	PT1150LD.D140	Spring
49	PT1150LD.D141	O-ring
50	PT1150LD.D142	Screw
51	PT1150LD.D143	O-ring
52	PT1150LD.D144	Y-seal
53	PT1150LD.D145	Roll pin
54	PT1150LD.D146	Steel ball 18.2mm
55	PT1150LD.D147	Piston rod
56	PT1150LD.D148	Dust ring
57	PT1150LD.D149	Screw
58	PT1150LD.D150	Shaft
59	PT1150LD.D151	Bracket
60	PT1150LD.D152	Pressure roller
61	PT1150LD.D153	Shaft
62	PT1150LD.D154	Roll pin
63	PT1150LD.D155	Roll pin
64	PT1150LD.D156	Bushing
65	PT1150LD.D157	Seal washer
66	PT1150LD.D158	Bushing
67	PT1150LD.D159	Sleeve
68	PT1150LD.D160	Screw

NOTE: It is our policy to continually improve products and as such we reserve the right to alter data, specifications and component parts without prior notice.

IMPORTANT: No liability is accepted for incorrect use of product.

WARRANTY: Guarantee is 12 months from purchase date, proof of which will be required for any claim.

Sealey Group, Kempson Way, Suffolk Business Park, Bury St Edmunds, Suffolk. IP32 7AR



01284 757500



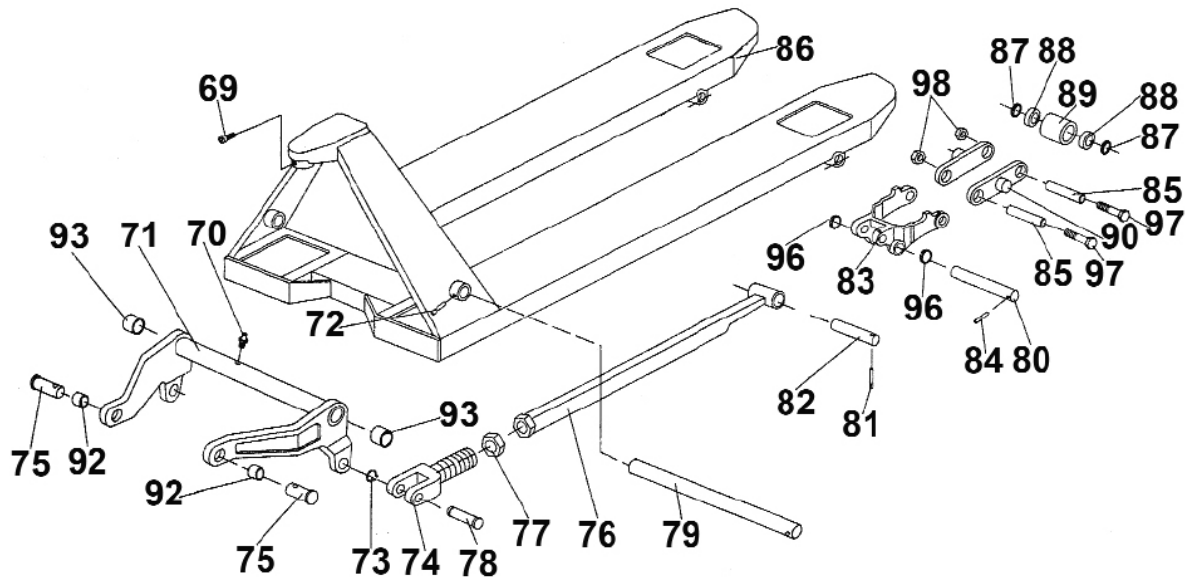
01284 703534



sales@sealey.co.uk



www.sealey.co.uk



Item	Part No.	Description
49	PT1150LD.D201	Hex head flange bolt m8x15
70	PT1150LD.D202	Oil - holder
71	PT1150LD.D203	Rock-arm
72	PT1150LD.D204	Pin
73	PT1150LD.D205	Retaining ring
74	PT1150LD.D206	Joint
75	PT1150LD.D207	Shaft
76	PT1150LD.D208	Pushing rod
77	PT1150LD.D209	Nut
78	PT1150LD.D210	Pin
79	PT1150LD.D211	Shaft
80	PT1150LD.D212	Shaft
81	PT1150LD.D213	Pin
82	PT1150LD.D214	Shaft
83	PT1150LD.D215	Frame for roller
87	PT1150LD.D216	Pin
85	PT1150LD.D217	Sleeve for roller (for tandem wheel)
86	PT1150LD.D218	Fork frame
87	PT1150LD.D219	Washer

Item	Part No.	Description
88	PT1150LD.D220	Bearing 6204-2rs
89	PT1150LD.D221	Load roller (for tandem wheel)
90	PT1150LD.D222	Linking plate (for tandem wheel)
91	PT1150LD.D223	Pin (for single wheel)
92	PT1150LD.D224	Bushing
93	PT1150LD.D225	Bushing
94	PT1150LD.D229	Loading roller (for single wheel)
95	PT1150LD.D230	Shaft for roller (for single wheel)
96	PT1150LD.D232	Washer
97	PT1150LD.D233	Bolt (for tandem wheel)
98	PT1150LD.D234	Locking nut (for tandem wheel)
--	PT1150LD/CHU	Complete hydraulic unit (NOT SHOWN)
--	SB-18.2	Steel ball 18.2mm (NOT SHOWN)
--	SB-7.2	Steel ball 7.2mm (NOT SHOWN)
--	SCB1023.S	Socket cap bolt zinc m10x23 (NOT SHOWN)
--	SCB820.S	Socket cap bolt zinc m8x20 (NOT SHOWN)
--	SFS815.S	Hex head flange bolt m8x15 single (NOT SHOWN)
--	SWM10.S	Spring washer m10 zinc (single) (NOT SHOWN)

NOTE: It is our policy to continually improve products and as such we reserve the right to alter data, specifications and component parts without prior notice.

IMPORTANT: No liability is accepted for incorrect use of product.

WARRANTY: Guarantee is 12 months from purchase date, proof of which will be required for any claim.