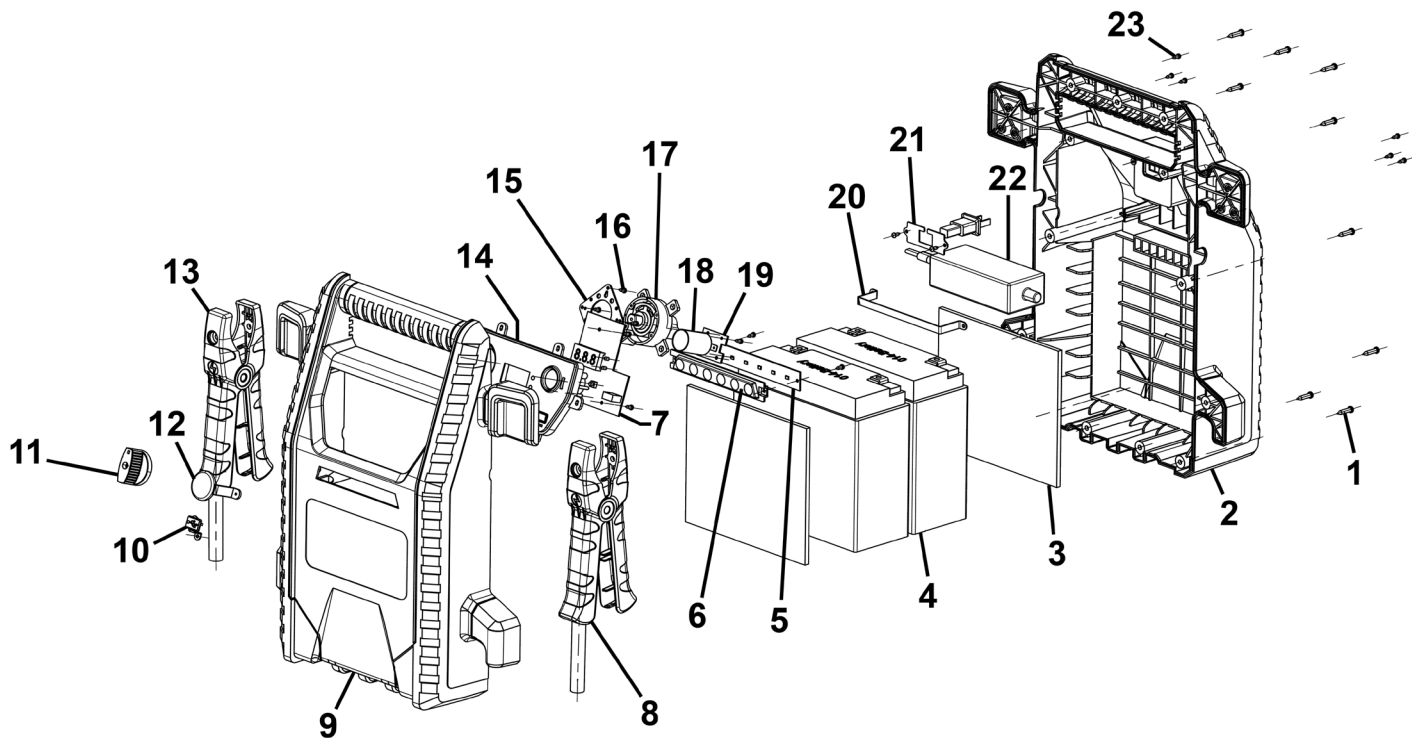




TM

Parts Information:  
**Premier 12/24V RoadStart® Jump Starter**  
**4400A**  
**Model No: PRS4400**



Item	Part No.	Description	Qty
1	PRS4400-01	Pan Head Tapping Screw ST4.2 x 19	13
2	PRS4400-02	Rear Cover	1
3	PRS4400-03	Backing Foam (170x125x5mm)	2
4	PRS4400-04	Battery 12V 22AH	2
5	PRS4400-05	LED Lighting Panel	1
6	PRS4400-06	Protective Panel	1
7	PRS4400-07	Main PCB Board	1
8	PRS4400-08	Negative Cable and Clamp Assembly	1
9	PRS4400-09	Front Cover	1
10	PRS4400-10	USB Protective Cover	1
11	PRS4400-11	Conversion Switch Knob	1
12	PRS4400-12	Cigarette Lighter Protective Cover	1

Item	Part No.	Description	Qty
13	PRS4400-13	Positive Cable & Clamp Assembly	1
14	PRS4400-14	Front Panel	1
15	PRS4400-15	Front Plate for Conversion Switch	1
16	PRS4400-16	Self-Tapping Screw ST3 x 8	19
17	PRS4400-17	Conversion Switch 1500A	1
18	PRS4400-18	Cigarette Lighter Socket	1
19	PRS4400-19	Cigarette Lighter Backing Plate	4
20	PRS4400-20	Support Bar	1
21	PRS4400-21	Pressure Plate	1
22	PRS4400-22	AC Charger 13.8V 3A	1
23	PRS4400-23	Self-Tapping Countersunk Screw ST2.9 x 9.5	6

**NOTE:** It is our policy to continually improve products and as such we reserve the right to alter data, specifications and component parts without prior notice. There may be alternative versions of this product, please contact us should you require this information.

**IMPORTANT:** No liability is accepted for incorrect use of product. Spare parts must be fitted by a competent person

**WARRANTY:** Guarantee is 12 months from purchase date, proof of which will be required for any claim.

**Sealey Group**, Kempson Way, Suffolk Business Park, Bury St Edmunds, Suffolk. IP32 7AR



01284 757500



sales@sealey.co.uk



www.sealey.co.uk